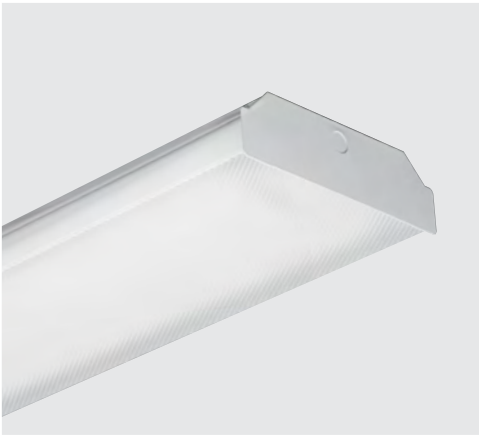


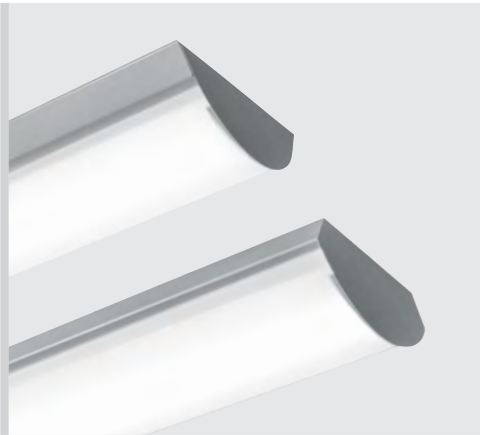
LED WRAPS





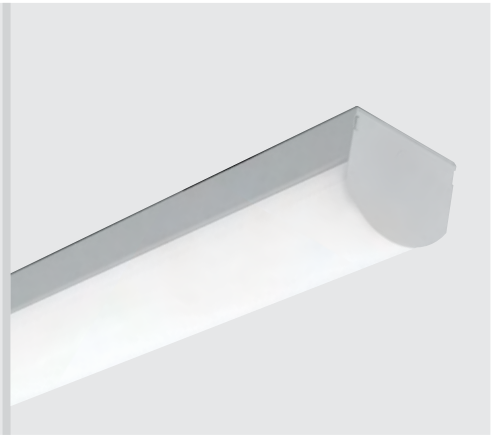
17 & 18

LOW-PROFILE LED WRAP



39 & 39W

SURFACE OR PENDANT LED WRAP



SLF

SURFACE OR WALL MOUNT LED



LLM

ARCHITECTURAL SLIMLINE LED



AVX

ARCHITECTURAL VANDAL LED WRAP



ASM

ARCHITECTURAL LED SURFACE

PRODUCT DETAILS

SERIES	NOMINAL LUMENS	LENGTH			WIDTH	MOUNTING							OCC	EM	TAMPER RESISTANT	QUICKSHIP	DLC
		2'	4'	8'		WALL	SURFACE	PENDANT	CABLE	SEMI-RECESSED	CORNER	ROW					
17	2,700-11,000	■	■	■	10-3/4"		■	■				■		■		■	
18	9,000		■		16-3/4"		■	■				■		■		■	
39	3,000-16,800		■	■	10-3/16"		■	■	■			■		■			■
39W	3,000-16,800		■	■	12-1/16"		■	■	■			■		■			
SLF	1,300-9,800	■	■		5-7/8"	■	■					■	■	■			■
LLM	1,200-12,000	■	■	■	2-5/8"		■		■			■	■				
AVX	2,500-20,000	■	■	■	11"	■	■	■	■		■	■	■	■			
ASM	2,500-9,200		■	■	8-1/2"		■	■	■	■		■		■			

