

QuickShip

Fluorescent Products



LPT Low-Profile Troffer

- Shallow 3-7/16" fixture height
- Gasketed door frame eliminates light leaks
- Cam latches allow for hassle-free maintenance

Fixture Standards: #12 pattern acrylic lens, .100" thick • T8 electronic ballast • Universal voltage

FLUORESCENT SERIES	DESCRIPTION
LPT-22-232U-SA12100-QS-EB2*AD-UNV	2' x 2' ▪ 2 U-Lamps
LPT-24-332-SA12100-QS-EB3*AD-UNV	2' x 4' ▪ 3-Lamp
LPT-24-432-SA12100-QS-EB4*AD-UNV	2' x 4' ▪ 4-Lamp



GL Low-Profile High Bay

- Shallow fixture depth of less than 4"
- Quick-wire access for easy installation
- Aluminum housing for heat dissipation

Fixture Standards: 4' • 54-watt T5HO • VBY hangers • Electronic ballast • Universal voltage

FLUORESCENT SERIES	DESCRIPTION
GL-4-454T5H-(2)VBY/PWU-QS-EB4-UNV	4-Lamp
GL-4-654T5H-(2)VBY/PWU-QS-EB4/2-UNV	6-Lamp



76 Standard Strip

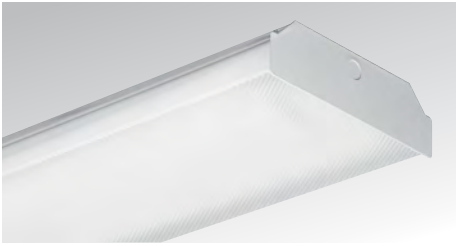
- Low 2" profile housing
- Available in 4' and 8' lengths
- R1240 Reflector available (T8 only)

FLUORESCENT Fixture Standards: 32-watt T8 • Electronic ballast • Universal voltage

FLUORESCENT SERIES	DESCRIPTION
76-4-232-QS-EB2*AD-UNV	4' ▪ 2-Lamp
76-8-432-QS-EB4*AD-UNV	8' ▪ 4-Lamp
R1240-4 REFLECTOR	4' Reflector

QuickShip

Fluorescent Products

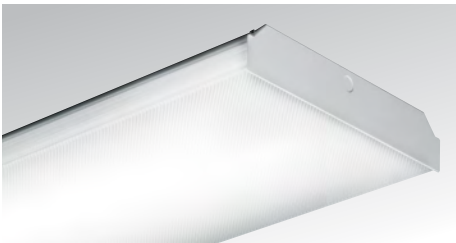


17 Narrow Low-Profile Wrap

- Wrap around lens provides uniform downward light and subtle side illumination
- Shallow depth provides low-profile appearance
- Shielding is secured continuously along fixture sides

Fixture Standards: 4' • Clear prismatic acrylic diffuser • 32-watt T8 • Electronic ballast • Universal voltage

FLUORESCENT SERIES	DESCRIPTION
17-4-232-A-QS-EB2*AD-UNV	2-Lamp



18 Low-Profile Wrap

- Wrap around lens provides uniform downward light and subtle side illumination
- Shallow depth provides low-profile appearance
- Shielding is secured continuously along fixture sides

Fixture Standards: 4' • Clear prismatic acrylic diffuser • 32-watt T8 • Electronic ballast • Universal voltage

FLUORESCENT SERIES	DESCRIPTION
18-4-432-A-QS-EB4*AD-UNV	4-Lamp