



HEALTHCARE LIGHTING LOOKBOOK



#### MCTM | Multi-Function Medical

*Featuring ambient, exam, reading & night functions, 4,700 ambient & 8,400 exam lumens, 80 CRI, 4000K CCT, straight diffuse acrylic insert with polycarbonate underlay*



#### MX4R | 4" Continuous – Recessed

*Featuring 12' & 16' rows, 800 lumens per foot, 80 CRI, 4000K CCT, flat diffuse acrylic lens*



#### NLV | Vandal-Resistant Night Light

*Featuring small size, 200 lumens, 80 CRI, 4000K CCT, white louver with clear .250" thick polycarbonate, white faceplate finish*



#### 4DR | 4.5" Downlight – Round

*Featuring 3,000 lumens, 80 CRI, 4000K CCT, open reflector with clear semi-specular finish, wide distribution*

Orlando Health South Lake Hospital | Clermont, FL  
Architect: HKS Architects  
Photographer: Pavel Bendov





MCTA | Architectural Clean Room Troffer

*Featuring 2'x4', 5,900 lumens, 80 CRI, 3500K CCT, straight diffuse acrylic insert with polycarbonate underlay*



AT3 | Architectural Troffer – Straight Floating Center

*Featuring 2'x4', 5,500 lumens, 80 CRI, 3500K CCT, diffuse matte acrylic center*



6PR | 6" Shallow Plenum Downlight – Round

*Featuring 2,000 lumens, 80 CRI, 3500K CCT, flush lens with clear semi-specular finish, medium distribution*



MDB | Multi-Function Bed Light

*Featuring ambient, exam, & reading functions, 4,400 ambient & 7,800 exam lumens, 80 CRI, 3500K CCT, white perforated ambient with frosted acrylic pattern exam lens*





MDS | Medical/Surgical Troffer  
– Wide Grid

*Featuring 2'x4', 22,000 lumens,  
80 CRI, 3500K CCT, frosted acrylic  
pattern lens*



AMD | Architectural  
Multi-Function Medical

*Featuring ambient, exam, reading  
& night functions, 2,700 ambient &  
8,000 exam lumens, 80 CRI, 3500K  
CCT, frosted, ribbed acrylic diffusers*

Johns Hopkins Suburban Hospital | Bethesda, MD  
Architect: Wilmot Sanz  
Photographer: Halkin Mason Photography





V6DR | 6" Vandal-Resistant  
Downlight – Round

*Featuring 2,300 lumens, 80 CRI, 3500K CCT, diffuse polycarbonate lens with white finish, wide distribution, 1/2" flange*



V4DR | 4.5" Vandal-Resistant  
Downlight – Round

*Featuring 2,100 lumens, 90 CRI, 3500K CCT, tunable RGBW, diffuse polycarbonate lens with white finish, wide distribution, 1/2" flange*

---

Austin State Hospital | Austin, TX  
Architect: architecture+  
Photographer: Justin Wallace Photography





6DR | 6" Downlight – Round

*Featuring 3,000 lumens, 90 CRI, 3500K CCT, regressed lens with clear semi-specular finish, medium distribution, 1/2" flange*



MD4 | Dual Function Bed Light

*Featuring ambient, exam, & reading functions, 5,200 ambient & 10,400 exam lumens, 80 CRI, 3500K CCT, curved diffuse ribbed acrylic lens with clear sani-shield*





#### MDB | Multi-Function Bed Light

*Featuring ambient, exam, & reading functions, 4,400 ambient & 7,800 exam lumens, 80 CRI, 3500K CCT, white perforated ambient with frosted acrylic, pattern #12 exam lens*



#### PX | Perimeter Wall – Wash

*Featuring 3', 700 lumens per foot, 80 CRI, 3500K CCT*



#### MX4R | 4" Continuous

*Featuring 4' rows, 800 lumens per foot, 90 CRI, 3500K CCT, flat diffuse acrylic lens, recessed*



#### 4DR | 4.5" Downlight – Round

*Featuring 1,000 lumens, 90 CRI, 3500K CCT, flush lens with white finish, wide distribution, 1/2" flange*

Virginia Hospital Center | Arlington, VA  
Architect: E4H | Environments for Health Architecture  
Photographer: Jeffrey Sauers | cpiproducts.com





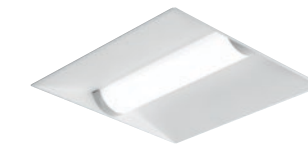
**6DS | 6" Downlight – Square**  
*Featuring 2,000 lumens, 80 CRI, 4000K CCT, open reflector with clear specular finish, wide distribution, 1/2" flange*



**M6PR | 6" MRI Shallow Plenum Downlight – Round**  
*Featuring 1,500 lumens, 80 CRI, 4000K CCT, flush lens with white finish, medium distribution, 1/2" flange*

Baptist Health South Florida | Plantation, FL  
 Architect: Gresham Smith  
 Photographer: Sandy DeWitt Photography





LT | Lite Troffer

*Featuring 2,700 lumens, 80 CRI, 3500K CCT, frosted acrylic lens*



MDS | Medical/Surgical Troffer – Wide Grid

*Featuring 2'x4', 22,000 lumens, 90 CRI, 4000K CCT, frosted acrylic pattern lens*



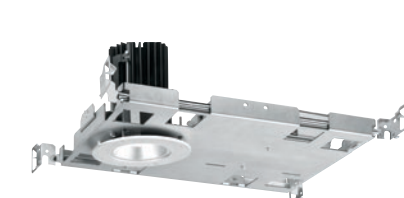
HM6DR | 6" Cleanroom Medical Downlight – Round

*Featuring 5,000 lumens, 90 CRI, 4000K CCT, flush lens with white finish, wide distribution, 1/2" flange*

---

Ellinwood Hospital | Ellinwood, KS  
Architect: HFG Architecture  
Photographer: Essential Images Photography | Milt Mounts





V2DR | 2" Vandal-Resistant  
Downlight – Round  
*Featuring 1,500 lumens, 80 CRI, 3000K  
CCT, regressed lens with clear semi-  
specular finish, wide distribution*



4CR | 4" Cylinder – Round  
*Featuring 13" height, 900 lumens, 80  
CRI, 3000K CCT, white housing finish,  
regressed lens with white finish, wide  
distribution, aegean blue braided cord*

Hope Cottage | Joplin, MO  
Architect: Corner Greer & Associates (CGA Architects)  
Photographer: Robert Holmes | Holmes Photography





**H.E. WILLIAMS, INC.**

831 West Fairview Ave | Carthage, MO 64836

417-358-4065

[hew.com](http://hew.com)

Rev.08/13/25