

# Lighting for Healthcare Centers



LIGHTING FOR HEALTHCARE CENTERS

H.E. WILLIAMS, INC.







# Made Right Here™

H.E. Williams, Inc. is well into its third generation of family leadership and still manufacturing products at our facility in Carthage, Missouri, where it all began in 1921. Over the years, technology has evolved, but our values have not.

As an independently-owned American manufacturer, we are simply easier to do business with. We personally and quickly respond to you with answers. We build and ship products with your schedule in mind, and our long-standing promise to produce quality fixtures means fewer field service issues. After 100 years, we've found no better way to meet your standards and ours.

At our Midwest headquarters and production facility, every order is handled like it's the only order. From start to finish, Williams light fixtures are made by hardworking men and women. It's their job to see that each product is built right.

A lifelong partnership and products we're proud to put our name on – that's the Made Right Here difference.



A Visible Difference®





4 Lighting for Health  
& Wellbeing



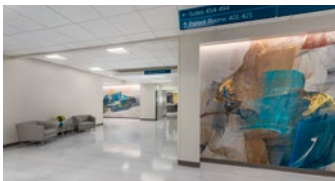
6 Lobby &  
Visitor



10 Nurse &  
Reception



14 Patient  
Areas

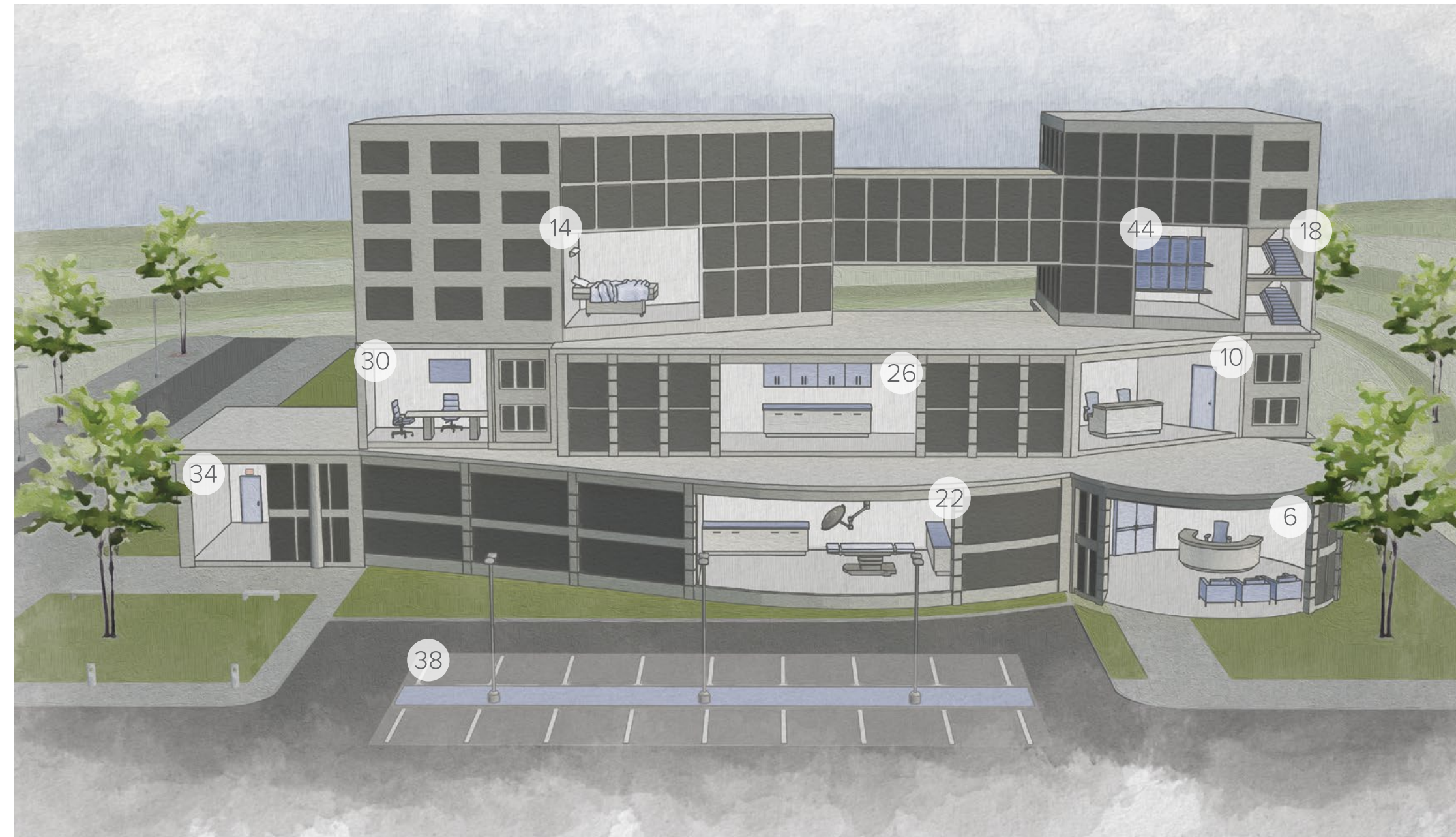


18 Corridors &  
Stairways



22 Procedure  
Rooms

# Content



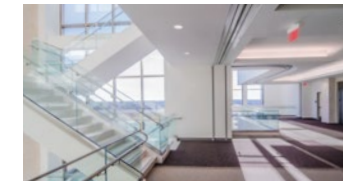
26 Labs &  
Pharmacies



30 Office &  
Meeting Areas



34 Egress



38 Site  
Lighting



42 Human-centric  
Lighting



44 Lighting  
Controls





# Lighting for Health & Wellbeing

Modern healthcare lighting goes beyond hospitals. From senior living centers and rehab facilities to urgent care and doctor offices, we have lighting solutions to fit your needs.

The right lighting is beneficial to patient healing and healthcare personnel alertness. Providing optimal illumination regulates the circadian system, improves 24-hour caregiver effectiveness and gives patients a sense of comfort and safety.

The Williams product line delivers higher optical efficiencies, enhanced color rendering and enables a personalized level of light control. With solutions for every area of your campus, we offer quality fixtures, certified and engineered to meet the most demanding design requirements.

Delivering a better healing experience through lighting



# Lobby & Visitor

Help visitors feel calm and comfortable by providing pleasant, relaxing ambiance with dim to warm lighting.

Enhance interior details and define specific areas using tunable color technology, available in a wide selection of Williams architectural recessed and suspended products.



Realize energy savings and easily control the lighting in the space with Williams Power over Ethernet solution.

Presenting visitors with a peaceful, welcoming environment





#### AT I Architectural Troffer

- Backlit curved lens provides uniform illumination for visual comfort
- Three unique styles create a highly-aesthetic presence
- Sani-shield helps protect against contaminants



#### 2D, 4D & 6D I 2, 4 & 6 Inch Downlight

- Innovative TrimLock® reflector retention system ensures trim remains flush with ceiling plane
- Contemporary design provides glare-free illumination for a soft ceiling appearance
- Sloped adapter accommodates vaulted ceilings



#### 4C, 6C, 8C I 4, 6, & 8 Inch LED Cylinder

- Comprehensive list of mounting options – pendant, cable, power cord, wall and ceiling
- Superior optical control with beams as narrow as 8° and field changeable optics as wide as 70°



#### CX I Continuous Cove

- Provides soft, uniform, lensed illumination for contractor and extruded coves
- Field-adjustable to the inch ensures a perfect fit
- Design spaces quickly with the Linear Product Builder



#### PX I Continuous Perimeter

- Use wash, slot, or graze distributions to illuminate room perimeters
- Engineered to accommodate straight runs and corners
- Adjustable extensions ensure a perfect fit for every application



#### RND I Round Architectural

- Provides soft, uniform ambient illumination
- Combine multiple mounting types to create a unique and modern space
- Available in diameters up to 4'



# Nurse & Reception Areas

Provide a well-lit work area for staff, nurse and reception areas while maintaining an approachable, attractive atmosphere for patients and nurses.

Recessed luminaires from Williams deliver ample, glare-free illumination and are not an obstruction in the space.



Keeping the needs of both the day and night shift in mind, Williams fixtures with Bios® lighting solutions provides the natural blue sky signal that helps regulate the circadian rhythm.



To improve productivity and reduce errors, utilize under-cabinet lighting to provide shadow-free direct illumination for reading and charting tasks.

Creating an inviting atmosphere at the heart of each floor





- LT | Troffer
- High efficacy fixture delivers up to 140 lm/W
  - Easily change the color temperature on-site with FieldSelect
  - Low-profile depth for shallow plenum



- SQR | Square Troffer
- Large-format design in 2', 3' and 4' squares
  - Frosted lens provides soft, smooth illumination
  - Create unique spaces by combining sizes



- 2A, 4AR & 6AR | Adjustable Downlights
- Adjustable aim with 0° - 45° tilt and 360° rotation
  - Beam angles ranging from 15° narrow to 55° wide for tailored performance
  - Etched degree markers and directional indicator make it simple to fine-tune the illumination angle



- MX | 2 & 4 Inch Continuous Ambient
- Versatile with recessed, surface, suspended and in-wall mounting
  - Flat, glowing edge, drop and regressed lenses give designers a variety of looks
  - Tunable white available to provide adaptive lighting



- CX | Continuous Cove
- Provides soft, uniform lensed illumination for contractor and extruded coves
  - Field-adjustable to the inch ensures a perfect fit
  - Design spaces quickly with the Linear Product Builder



- 1SF | Under Cabinet
- Delivers uniform, glare-free task lighting for nurse work areas
  - Small profile installs inconspicuously in confined spaces
  - Available with attractive rocker switch for easy on/off



# Patient Areas

Understanding the lighting requirements in patient environments, Williams fixtures are engineered to IESNA standards. Our multifunction luminaires provide flexibility to suit the needs of both patients and staff by providing ambient, exam, reading and nurse light options for an all-in-one solution. Various lighting compartments and bedside light controls provide personalized lighting.



Bios® paired with luminaires from Williams can mimic blue day light to help regulate the circadian system during the patient's stay.

Our standard antimicrobial finish is painted after fabrication for the handling safety of installers. Room side accessibility, customized lumen outputs, optional bedside controller, amber night light and multiple dimming protocols are a few of the Williams product features designed into our patient room luminaires.

Encouraging a sense of peace and wellbeing





#### AMD I Architectural Multi-Function

- Tailor ambient, exam, reading and nurse light output with eight configurations
- Accommodate equipment with 2x4 and split 2x2 fixtures
- Tunable white available to provide adaptive, individualized lighting



#### MDB I Multi-Function Bed Light

- Choose between two attractive ambient styles
- Select ambient, exam and reading light output among two configurations
- Protect against contaminants with the easy-to-clean, lensed door



#### MD4 I Dual Function Bed Light

- Specify as a single fixture or in pairs to customize ambient and exam light output
- Illuminate exam surfaces asymmetrically when installed in pairs and meet IESNA guidelines
- Encourage patient comfort with smooth, calming ambient lighting



#### CB I Cornice Bed Light

- Get comfortable ambient lighting along with a highly functional reading light
- Pick from two small-scale architectural styles, ClassicLine or CurviLine
- Control direct and indirect lighting independently using a pull chain or bedside controller



#### AX2W I 2 Inch Architectural

- Slim architectural design provides direct and indirect light
- Slightly wrapped lens creates glowing edge and smooth illumination
- Suspended and wall mount styles add design flexibility and continuity



#### 2D, 4D & 6D I 2, 4 & 6 Inch Downlight

- Bios® lighting solutions support the circadian rhythm
- Optional non-conductive lens for shower applications
- IP65-rated die cast trim includes easy-to-clean flush lens



# Corridors & Stairways

For corridors that are visually connected to patient areas, support human-centric design through adaptive lighting using tunable white light and PoE-optimized network lighting for complete integration.

Continuous LED lighting in ambient, perimeter and cove styles from Williams provides seamless, glare-free illumination, eliminating dark spots and shadows while improving comfort for patient transport.



Dimming protocols coupled with occupancy and daylight sensors save energy and deliver optimum light levels. When corridors and stairwells are frequented less, lights automatically dim, then transition seamlessly to higher lumens as one enters the space. Energy savings are realized without compromising safety and security.

Promoting feelings of security and comfort





#### AT | Architectural Troffer

- Backlit curved lens provides uniform illumination for visual comfort
- Three unique styles create a highly-aesthetic presence
- Sani-shield helps protect against contaminants



#### SQR | Square Troffer

- 2', 3' and 4' squares
- Design unique environments by combining sizes
- Frosted lens provides pleasing diffused light without LED pixelation



#### SLF | Surface or Wall Mount

- Sleek design for direct lighting in stairwells and hallways
- Attractive, high-impact frosted acrylic lens
- Optional tamper-resistant screws for vandal-prone areas



#### MX | 2 & 4 Inch Continuous Ambient

- Create elegant spaces with a seamless, continuous row of illumination
- Versatile with recessed, surface, suspended and in-wall mounting
- Flat, glowing edge, drop and regressed lenses give designers a variety of looks



#### CX | Continuous Cove

- Provides soft, uniform lensed illumination for contractor and extruded coves
- Field-adjustable to the inch ensures a perfect fit
- Design spaces quickly with the Linear Product Builder



#### PX | Continuous Perimeter

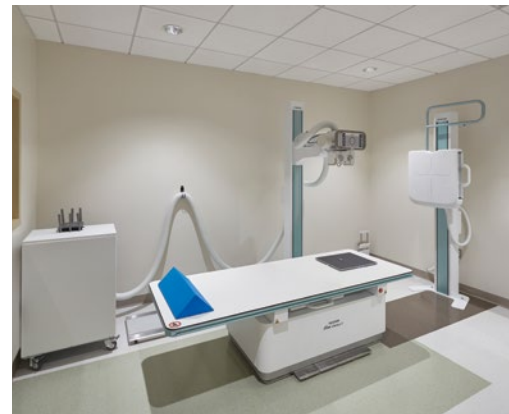
- Use slot, wash or graze distributions to illuminate room perimeters
- Engineered to accommodate straight runs and corners
- Adjustable extensions ensure a perfect fit for every application



# Procedure Rooms

Luminaires must meet strict standards in imaging suites, operating rooms and clean room environments. Surgical and clean room troffers from Williams meet these demands with IP65, ISO 5, Class 100 ratings and NSF/ANSI 2 splash zone certification, and comply with MIL-STD-461G conducted emissions regulations. Antimicrobial white finish is standard to help limit the spread of bacteria.

Our surgical products deliver high lumens and accurate color quality in symmetrical and asymmetrical distributions to precisely illuminate visual fields.



Optional green circuit provides enhanced visual clarity for operating room staff and reduces eye fatigue during videoscopic surgical procedures.

Equip imaging and exam environments with tunable lighting to create a comforting, relaxing environment for the patient during testing and scanning processes while allowing the flexibility to switch to brighter, white lighting for preparatory tasks.

Meeting the demanding requirements of controlled environments





#### MST | MIL-Spec Surgical Troffer

- Complies with MIL-STD-461G conducted emission regulations
- Specify green circuit to enhance visual clarity for the surgical team
- Seam-welded housing and door frame for controlled environments



#### MCT | Clean Room Troffer

- IP65 and ISO 5, Class 100 rated to meet demanding environments
- NSF/ANSI 2 certified for splash and non-food zone settings
- Closed cell foam, NSF approved gasket between housing and ceiling



#### MDS | Medical Surgical Troffer

- Provides auxiliary illumination from the perimeter of the operating room
- Reduces harsh contrast between surgical and preparatory work areas
- Triple gasket protects against contaminant ingress



#### M4P/M6P | 4 & 6 Inch MRI Downlight

- Designed with non-ferrous materials for MRI imaging suites
- Choose from round and square styles in trim or trimless
- IP65-rated die cast trim includes easy-to-clean flush lens

### Certifications



UL Certified IP65 per IEC 60598 as dust-tight protection against water spray from all directions.



Suitable for ISO 5, Class 100 rated clean rooms. Particles per cubic meter must be controlled below a specified amount to maintain airborne particulate cleanliness.



Meets military requirements for electromagnetic emissions and susceptibility within the intended electromagnetic environment for minimal EMI-related issues.



NSF/ANSI 2 certified. Meets rigorous test requirements to verify design, construction, performance, and sanitation of light fixtures intended for use in controlled environments.



# Labs & Pharmacies

Appropriate light levels in labs and pharmacies minimize errors and decrease eye strain. Williams recessed fixtures provide glare-free ambient lighting, while downlights are a perfect solution for focused illumination. Eliminate shadows and reduce errors with under-cabinet task lighting.

Narrow spectrum options from Williams provides safe lighting for spectrally-sensitive applications. Use red LEDs in research laboratories and amber for pharmaceutical preparation.



Williams luminaires are IP65, ISO 5, Class 100 rated and NSF/ANSI 2 splash zone certified to meet stringent cleanroom requirements. NSF-approved closed cell foam gasketing and one-piece seam-welded fixture housing provide a barrier between the fixture and procedure room. Antimicrobial white finish is standard to limit the spread of bacteria.

Improving worker performance in critical environments





#### MCT | Cleanroom Troffer

- IP65 and ISO 5, Class 100 rated to meet demanding environments
- NSF/ANSI 2 certified for splash and non-food zone settings
- Available for spectrally-sensitive applications with amber and red



#### 50 | Static Troffer

- Triple gasketing and inverted lens options for smooth surface room side
- Fully gasketed door protects against contaminants
- Spring-loaded cam latches provide hassle-free room side maintenance



#### AT | Architectural Troffer

- Backlit curved lens provides uniform illumination for visual comfort
- Three unique styles create a highly-aesthetic presence
- Sani-shield helps protect against contaminants



#### AX2 | 2 Inch Architectural

- Sleek, slim architectural design provides direct or indirect light
- Slightly wrapped lens creates glowing edge and smooth illumination
- Suspended and wall mount styles add design flexibility and continuity



#### 1SF | Under Cabinet

- Delivers uniform, glare-free task lighting for work areas
- Small profile installs inconspicuously in confined spaces
- Available with attractive rocker switch for easy on/off



#### 2D, 4D & 6D | 2, 4 & 6 Inch Downlight

- Choose from round and square styles in trim or trimless
- Innovative TrimLock® reflector retention system ensures trim remains flush with ceiling plane
- IP65-rated die cast trim includes easy-to-clean flush lens



# Office & Meeting Areas

Soften lighting in meeting spaces with indirect cove or perimeter solutions from Williams and use downlighting for directional illumination.



Personalize the lighting in private office spaces with FieldSelect®. An innovative solution from Williams, FieldSelect allows the end user to choose a desired color temperature with its built-in fixture switch.

Stimulating thought and promoting clear decision making





**PT | Shallow Plenum Troffer**

- Recessed, surface and retrofit kit preserve continuity
- Easily change the color temperature on-site with FieldSelect
- Slim 2-3/8" for minimal plenum space and low-profile surface mount



**AT | Architectural Troffer**

- Backlit curved lens provides uniform illumination for visual comfort
- Three unique styles create a highly-aesthetic presence
- Hinged door frame swings down for easy room-side access



**CT | Shallow Plenum Curved Troffer**

- Maximize energy savings with efficacies up to 132 lm/W
- Slim depth for shallow plenum applications
- Fully room-side accessible



**MX | 2 & 4 Inch Continuous Ambient**

- Design custom spaces and build shapes with corner option
- Versatile with recessed, surface, suspended and in-wall mounting
- Flat, glowing edge, drop and regressed lenses give designers a variety of looks



**PX | Continuous Perimeter**

- Use slot, wash or graze to illuminate room perimeters
- Engineered to accommodate straight runs and corners
- Adjustable extensions ensure a perfect fit for every application



**2D, 4D & 6D | 2, 4 & 6 Inch Downlight**

- Choose from round and square styles in trim or trimless
- Innovative TrimLock® reflector retention system ensures trim remains flush with ceiling plane
- Contemporary design provides glare-free illumination for a soft ceiling appearance



# Egress

Well-marked exits and emergency backup lighting are necessary to maintain the safety of patients, visitors and staff.

Williams emergency and exit signs meet UL 924, NFPA Life Safety Code, NEC, OSHA, and local and state codes. Bright and evenly illuminated signs provide excellent visibility from multiple locations within an area. Create custom messaging for precise wayfinding or important messages throughout the facility.



Nearly all Williams fixtures are designed with an emergency battery backup option to keep necessary lights on when the power goes out. Obtain peace of mind with battery backup, providing 90 minutes of emergency operation and a rechargeable fully automatic solid-state system.

Ensuring safety for patients, visitors and staff





- EMER/LED | Emergency LED
- High-performance, adjustable lamp heads
  - Wet location available
  - Optional high lumen heads



- EXIT | LED Exit Sign
- Compact, low-profile design
  - Universal single/double face
  - Wet location available



- EXIT/CA | Cast Aluminum LED Exit
- Three faceplate finishes
  - Compact, low-profile design
  - Unique design allows double face conversion in the field



- EXIT/EL | Edge-lit LED Exit
- UV-stabilized edgelit panel provides consistent, uniform illumination
  - Compact, low profile design
  - Ceiling, side, wall mount or recessed



- EXIT/EM/LED | Exit & Emergency
- Unique design allows double face conversion in the field
  - Adjustable lamp heads
  - Optional high lumen heads



- EMER/DECO | Decorative LED
- Decorative, low-profile, architectural design
  - Factory-installed photocell
  - Standard operating temperature of 32°F to 122°F



# Site Lighting

Exterior lighting welcomes visitors to the hospital while providing safe passage to and from parking lots, and highlighting architectural details.

Williams LED site lighting solutions are elegantly designed to accent buildings and blend seamlessly with the surrounding environment.



Our high-performance, energy-efficient luminaires are built for durability and ease of installation.

Illuminate pathways with step lighting and bollards to promote wayfinding. Use flood lights to highlight signage and area lights to provide ample illumination along driveways and parking areas.

Creating inviting impressions for welcoming spaces





- VA | Voltaire Area Light**
- Complement architecture with low-profile, contoured design
  - Illuminate pedestrian walkways and parking lots using two functional sizes
  - Shorten installation time with hinged two-piece enclosure



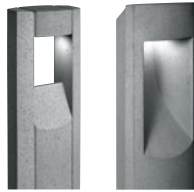
- VG | Voltaire Garage Light**
- Rugged and durable housing with IP66 rating
  - Provides necessary security light levels and reduced glare
  - Quick and easy installation with hinged two-piece enclosure



- VF | Voltaire Flood Light**
- Contoured styling blends seamlessly with landscaping
  - Precise light control with six standard NEMA distributions
  - Versatile suite of architectural mounting arms



- VW | Voltaire Wall Pack**
- Choose from two distinct styles in mini and standard sizes
  - Designed to illuminate sidewalks, entryways, perimeters or facades
  - Savings of up to 80% energy compared to HID systems



- VCB | Voltaire Concrete Bollard**
- Two unique styles – archilinear and triarc
  - Aesthetically designed to harmonize with a variety of architectural styles
  - Provides security and accent lighting for walkways, courtyards and entrances



- 2D, 4D & 6D | 2, 4 & 6 Inch Downlight**
- Wet location, covered ceiling listed for site lighting applications
  - Beam angles ranging from 8° spot to 70° wide for tailored performance
  - Vandal-resistant design for vandal prone areas





# Human-centric Lighting

## **Tunable Color**

Create rich, vibrant designs with lasting visual impact using the full visible light spectrum.

## **Tunable White**

Support human-centric design through adaptive, individualized lighting using tunable white light.

## **Dim to Warm**

Create a comfortable, welcoming ambience with the familiar glow of incandescents using warm dimming LEDs

## **FieldSelect®**

Cater to personal preferences with three switchable CCT settings, providing color temperature flexibility – 3000K, 3500K and 4000K.

[hew.com/dynamic](http://hew.com/dynamic)



Elevate your space and improve sleep quality, alertness and decrease social jet lag with BIOS SkyBlue® technology in our high-performance luminaires.

As the industry-leading circadian LED solution, BIOS SkyBlue contributes toward satisfying Circadian Lighting Design Feature 54 under the WELL Building Standard™ v1 and Feature L03 under the WELL Building Standard v2.

[hew.com/bios](http://hew.com/bios)





# Lighting Controls

## Bluetooth® Lighting Controls

Gateway-free technology from Avi-on plus integrated fixture controls from Williams combine to deliver a turnkey solution that makes commissioning and setup a breeze.



## Data-Driven Systems

With over 80 PoE-enabled luminaires, environmental sensors, and software packages, Platformatics provides an IoT lighting backbone for healthy, smart buildings.



## In-Fixture Solutions

Through our partnerships with industry leaders, we bring sophisticated lighting controls and specification-grade LED luminaires together to enhance user experiences in the built environment.







**H.E. WILLIAMS, INC.**

831 West Fairview Ave | Carthage, MO 64836

417-358-4065

[hew.com](http://hew.com)