

VA1 | VA2 SERIES

DEFAULT COLOR DETAIL



Color specified for this series will default to parts painted as indicated in drawing to right.

STANDARD COLOR OPTIONS

Williams super durable polyester powder coat meets and exceeds AAMA 2604 specifications for outdoor durability.

The standard colors listed below are available on this fixture without incurring a custom color fee (swatches available on request):

	WHT (RAL #9003) White Smooth Gloss
	BLK (RAL #9004) Black Smooth Gloss
	GRN (RAL #6005) Green Smooth Gloss
	DBR Medium Bronze Smooth Satin
	DBZ Dark Bronze Smooth Gloss
	SLV (RAL #9006) Satin Aluminum
	GRAY Standard Gray Smooth Gloss

Colors shown will vary from actual material.

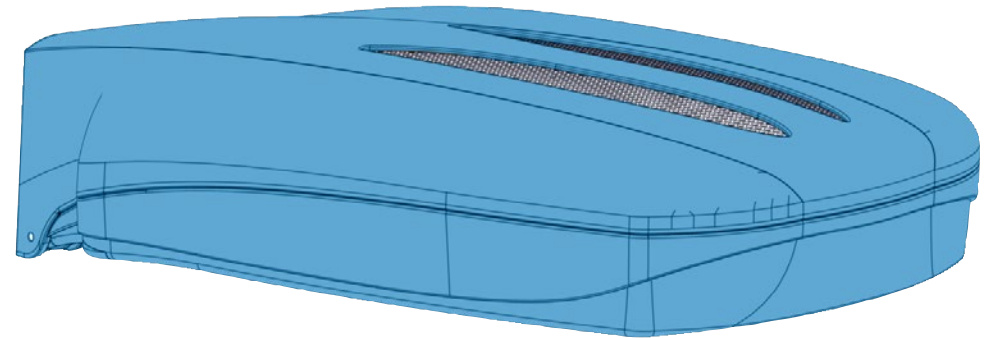
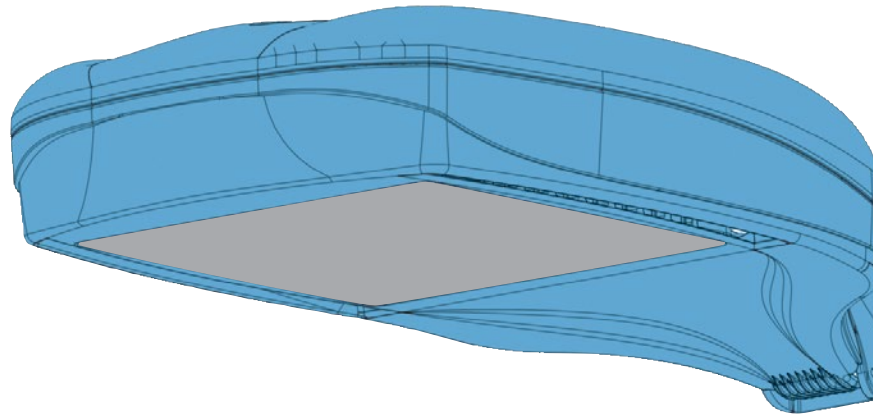
CUSTOM COLOR OPTION

For custom color (adder applies), please specify RAL code or a manufacturer code with description (see examples below).

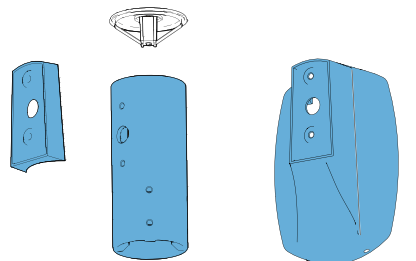
All custom colors other than RAL require two sample swatches, minimum 1" square.

EXAMPLES:

- RAL color: RAL #5005, Signal blue
- Sherwin-Williams color (requires two 1" square swatches): #SW 6965, Hyper Blue



ACCESSORIES



VATMR

VAWM
FOR USE WITH VA1

 DEFAULT COLOR LOCATIONS