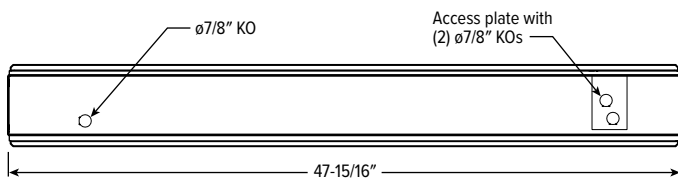


**Warning:**

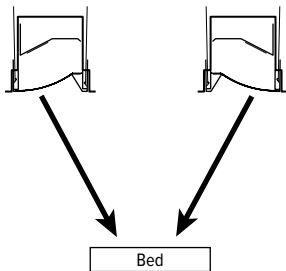
- This product must be installed in accordance with the applicable local, state, and national electrical codes by a licensed person familiar with the construction and operation of the product and the hazards involved.
- Make sure all electrical power is turned off while installing the fixture.
- This luminaire must be adequately grounded for protection against shock hazards and to assure proper operation.
- Disconnect power before servicing.
- Always use correct lamp type and wattages.
- Suitable for dry and damp locations.

1. Place the fixture into the T-bar ceiling system so that the fixture is resting on the T-bar.
2. Once the fixture is installed into the ceiling system, follow the steps below to complete necessary electrical connections:
  - a. Remove access plate on the back of the fixture.
  - b. Remove ballast supply wires from access plate.
  - c. Make wire connections in accordance with local codes. (See "WIRING DIAGRAM:")  
Ground screw is provided on access plate.
  - d. Re-install access plate.

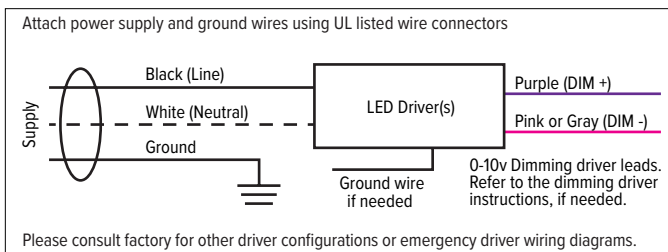
FIG 1.1



3. Make sure that fixtures are oriented opposite each other to allow for proper light distribution over bed surface.



**WIRING DIAGRAM:**





H. E. WILLIAMS . I N C .

# MD2-LED SERIES

## INSTALLATION INSTRUCTIONS

### LINEAR LED

#### Field Service Instructions

#### Warning:

- LEDs are ESD (Electro Static Discharge) sensitive devices that can be easily damaged if the proper ESD mitigating steps are not taken.
- LED components are shipped in pink ESD bags. DO NOT remove components from packaging until grounded with the supplied ESD wrist strap.
- LEDs are very sensitive to mechanical damage. Caution must be taken to avoid damage to the LEDs.
  - DO NOT use power tools to fasten the boards to the fixture. Over torquing the LED board fasteners will damage the boards. Recommended torque is 5 in-lbs. (0.6 Nm). Do not exceed 9 in-lbs. (1 Nm.).
  - If board screws need to be substituted, use #8 machine screws and ensure that the screw head OD does not exceed .0310" (8mm). Oversized screws will damage the LED board.
- ESD or mechanical damage voids all warranties.
- Caution - Risk of Shock. This product must be installed in accordance with the applicable installation codes. The installer must be a person familiar with the construction and operation of the product and hazards involved.

**WORK INSTRUCTIONS:** When servicing an LED light fixture, the following steps must be taken to avoid ESD damage of the LEDs:

- Step 1:** Turn off the power to the light fixture at the breaker panel or disconnect the driver plug located inside the wireway before installation.
- Step 2:** Disconnect EM battery pack (if applicable).
- Step 3:** Use supplied wrist strap as instructed in the package and attach to fixture ground or other available ground.
- Step 4:** Remove damaged LED component.
- Step 5:** Remove new LED component from ESD packaging.
- Step 6:** Install component in fixture and re-connect.
- Step 7:** Remove ESD wrist strap from ground.
- Step 8:** Reconnect light fixture to line voltage or energize light fixture at the breaker panel.
- Step 9:** Reconnect EM battery pack (if applicable).