

HETW LED SERIES

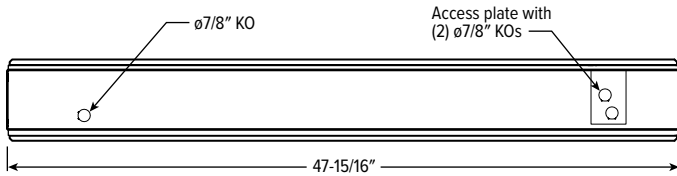
INSTALLATION INSTRUCTIONS



WARNING:

- This product must be installed in accordance with the applicable installation code by a person familiar with the construction and operation of the product and the hazards involved.
- Make sure all electrical power is turned off while installing the fixture.
- This luminaire must be adequately grounded for protection against shock hazards and to assure proper operation.
- Disconnect power before servicing.
- LEDs are ESD (Electro Static Discharge) sensitive devices that can be easily damaged if the proper ESD mitigating steps are not taken.
- LEDs are very sensitive to mechanical damage. Caution must be taken to avoid damage to the LEDs.
- ESD or mechanical damage voids all warranties.
- Suitable for dry and damp locations.

BACKVIEWS

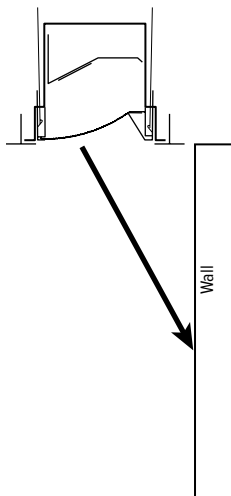


INSTALLATION

STEP 1: Place the fixture into the T-bar ceiling system so that the fixture is resting on the T-bar.

STEP 2: Make sure that fixtures are oriented to allow the light distribution to shine upon the wall.

FIG 2.1



STEP 3: Once the fixture is installed into the ceiling system, follow the steps below to complete necessary electrical connections:

- A. Remove access plate on the back of the fixture.
- B. Remove ballast supply wires from access plate.
- C. Make wire connections in accordance with local codes. Ground screw is provided on access plate. (See "WIRING DIAGRAM" on page 1)
- D. Re-install access plate.

WIRING DIAGRAM

