

# LL6 LED

## INSTALLATION INSTRUCTIONS

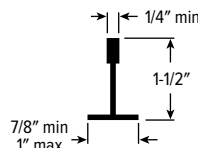


### WARNING:

- This product must be installed in accordance with the applicable installation code by a person familiar with the construction and operation of the product and the hazards involved.
- Make sure all electrical power is turned off while installing the fixture.
- This luminaire must be adequately grounded for protection against shock hazards and to assure proper operation.
- Disconnect power before servicing.
- LEDs are ESD (Electro Static Discharge) sensitive devices that can be easily damaged if the proper ESD mitigating steps are not taken.
- LEDs are very sensitive to mechanical damage. Caution must be taken to avoid damage to the LEDs.
- ESD or mechanical damage voids all warranties.
- Suitable for dry and damp locations

### WHAT IS A NEMA "G" (GRID) FIXTURE?

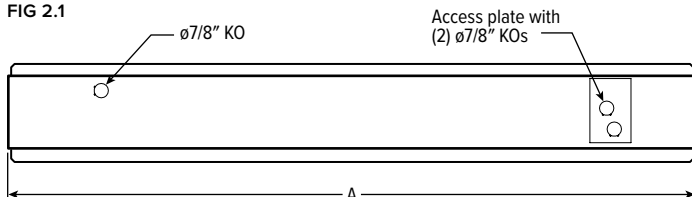
All Williams grid fixtures (NEMA Type "G", with accommodation for Types "NFG" and "SS") are designed to fit securely into a standard NEMA Type "G", 15/16" or 1" nominal T-bar ceiling system as well as accommodate NEMA Type "NFG" and "SS", 9/16" wide nominal T-bar systems without modification.



### NEMA TYPE "G" INSTALLATION

- STEP 1:** Follow the steps below to install the fixture(s) into a NEMA Type "G", NEMA Type "NFG" or Type "SS" ceiling system:
- Raise the fixture through the ceiling opening and rest the fixture in the grid system.
  - Center the fixture within the opening.
  - Use earthquake clips or integral T-bar clips to secure the fixture to the ceiling structure for added stability.
  - Refer to local codes for other installation requirements.
- STEP 2:** Once the fixture is installed into the ceiling system, follow the steps below to complete necessary electrical connections.
- Remove access plate on the back of the fixture. See FIG 2.1
  - Remove driver/power supply wires from access plate.
  - Make electrical connections in accordance with NEC and local codes. Ground screw is provided on access plate, see Wiring Diagram.
  - Re-install access plate.

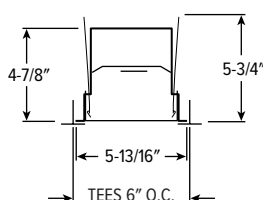
FIG 2.1



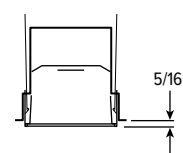
NOMINAL LENGTH	ACTUAL LENGTH (A)
2'	23-15/16"
3'	35-15/16"
4'	47-15/16"
5'	59-15/16"

### CROSS SECTIONS

#### FLUSH LENS



#### REGULAR LENS



### WIRING DIAGRAM

Make electrical connections in accordance with NEC and local codes.

Driver/power supply disconnects accept #12 – #16 AWG stranded or solid wire. Attach power supply and ground wires using UL listed wire connectors. Please consult factory for other driver configurations or emergency driver wiring diagrams.

