

MD2 LED

INSTALLATION INSTRUCTIONS

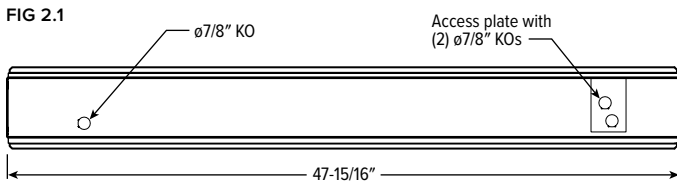


WARNING:

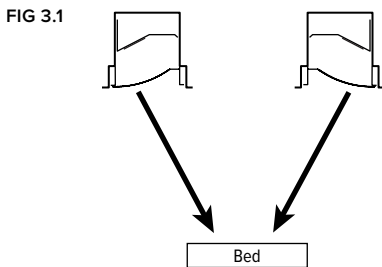
- This product must be installed in accordance with the applicable installation code by a person familiar with the construction and operation of the product and the hazards involved.
- Make sure all electrical power is turned off while installing the fixture.
- This luminaire must be adequately grounded for protection against shock hazards and to assure proper operation.
- Disconnect power before servicing.
- LEDs are ESD (Electro Static Discharge) sensitive devices that can be easily damaged if the proper ESD mitigating steps are not taken.
- LEDs are very sensitive to mechanical damage. Caution must be taken to avoid damage to the LEDs.
- ESD or mechanical damage voids all warranties.
- Suitable for dry and damp locations

INSTALLATION

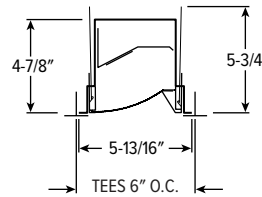
- STEP 1:** Place the fixture into the T-bar ceiling system so that the fixture is resting on the T-bar.
- STEP 2:** Once the fixture is installed into the ceiling system, follow the steps below to complete necessary electrical connections.
- Remove access plate on the back of the fixture. See FIG 2.1
 - Remove driver/power supply wires from access plate.
 - Make electrical connections in accordance with NEC and local codes. Ground screw is provided on access plate, see Wiring Diagram.
 - Re-install access plate.



- STEP 3:** Make sure that fixtures are oriented opposite each other to allow for proper light distribution over bed surface.



CROSS SECTION



WIRING DIAGRAM

