

# OUTDOOR CYLINDERS – PENDANT

## INSTALLATION INSTRUCTIONS



### WARNING:

- This product must be installed in accordance with the applicable installation code by a person familiar with the construction and operation of the product and the hazards involved.
- Make sure all electrical power is turned off while installing the fixture.
- This luminaire must be adequately grounded for protection against shock hazards and to assure proper operation.
- Disconnect power before servicing.
- LEDs are ESD (Electro Static Discharge) sensitive devices that can be easily damaged if the proper ESD mitigating steps are not taken.
- LEDs are very sensitive to mechanical damage. Caution must be taken to avoid damage to the LEDs.
- ESD or mechanical damage voids all warranties.
- Suitable for dry and damp locations.

### FOR USE WITH

- W4CR
- W6CR

### CONTENTS

STEP 1 PRIOR TO INSTALLATION .....	1	STEP 4 WIRING.....	4
STEP 2 TRIM SKIRT PREPARATION .....	2	STEP 5 MOUNTING .....	5
STEP 3 FIXTURE PREPARATION .....	3	STEP 6 FINISHING .....	5

### TOOLS REQUIRED

#### RECESSED JUNCTION BOX OPTION

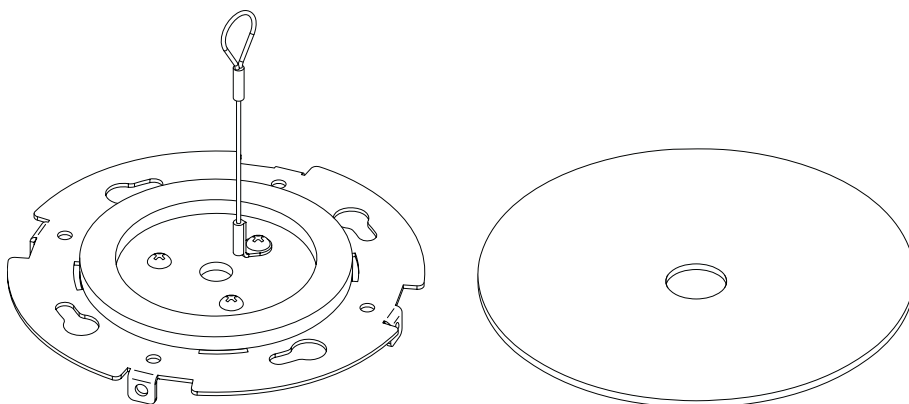
- Pre-installed 4" octagonal galvanized recessed J-box, by others
- 1/2" IPS pendant, ships separately
- (2) 8-32 x 1-1/4" flat head screws, by others
- Silicone caulk, by others
- 5/64" hex bit, by others

#### SURFACE JUNCTION BOX OPTION

- Pre-installed 4" round surface cast alum. weatherproof J-box, by others
- 1/2" IPS pendant, ships separately
- (4) 10-24 x 1/2" flat head screws, by others
- Pre-installed 1/2" or 3/4" rigid metal conduit, by others
- 5/64" hex bit, by others

### STEP 1 PRIOR TO INSTALLATION

A. Remove TwistLock™ interface plate and cover plate from the trim skirt. Set aside for Fixture Preparation step.



# OUTDOOR CYLINDERS – PENDANT

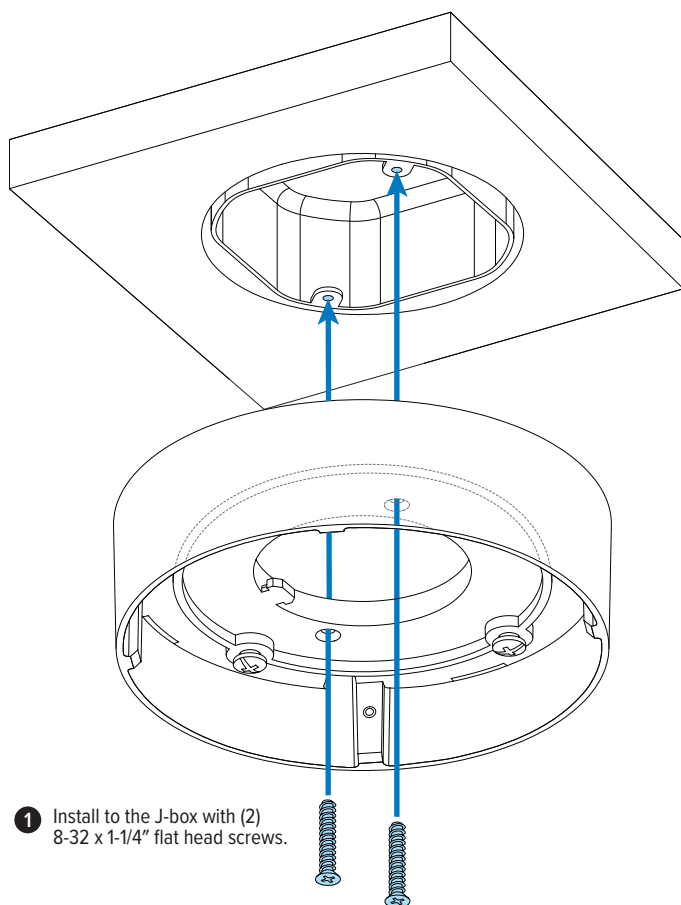
## INSTALLATION INSTRUCTIONS

### STEP 2 TRIM SKIRT PREPARATION

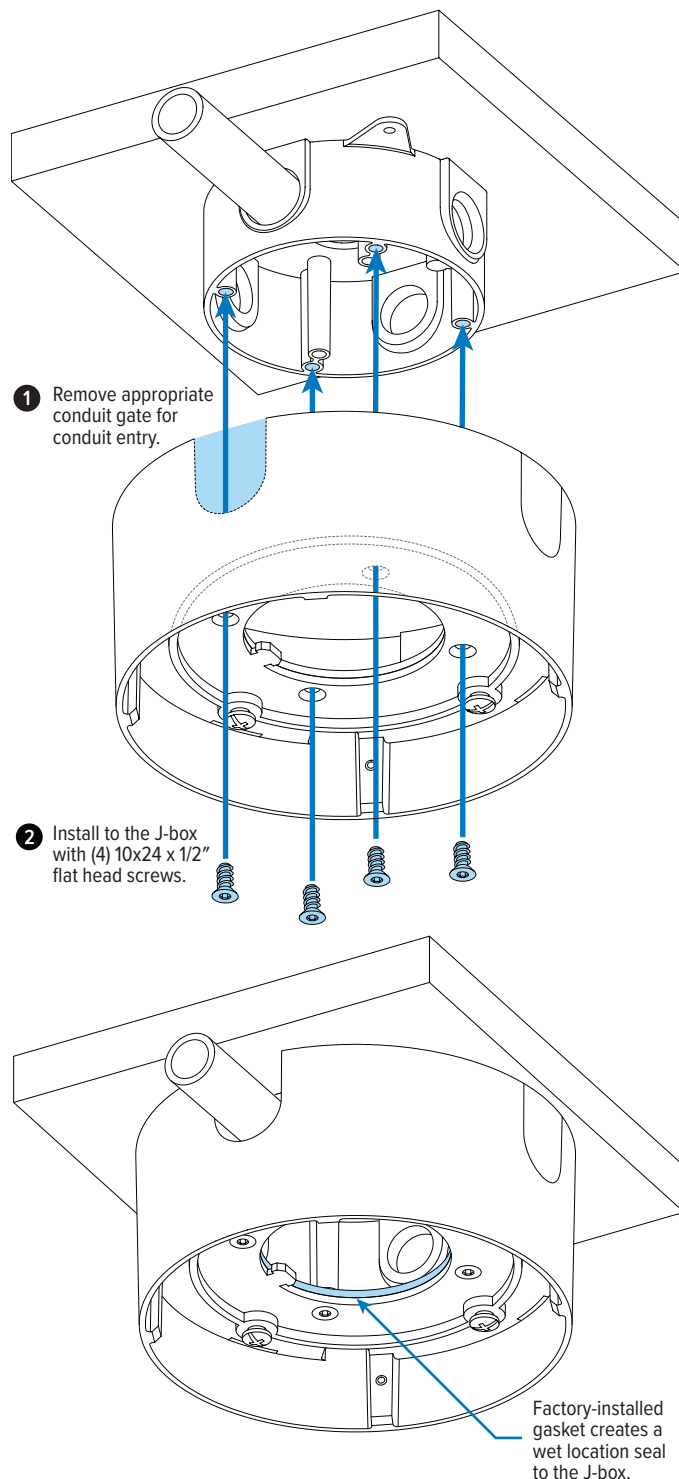
#### A. Install TwistLock Trim Skirt

##### RECESSED J-BOX OPTION

**IMPORTANT:** Silicone caulk **MUST** be applied around the **ENTIRE** perimeter of the trim skirt, where it meets the mounting surface.



##### SURFACE J-BOX OPTION



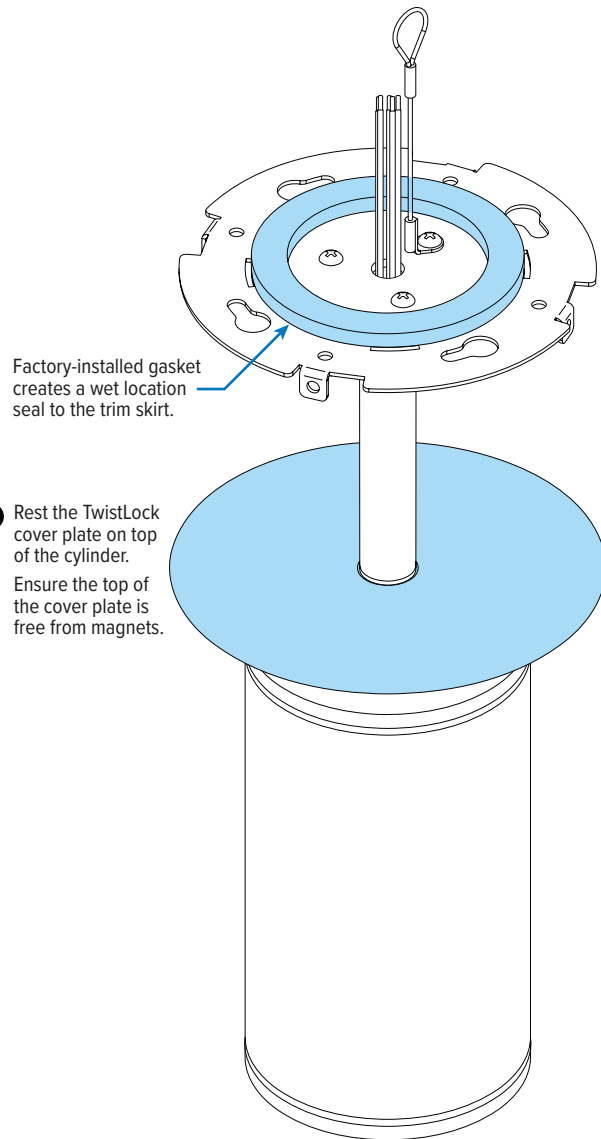
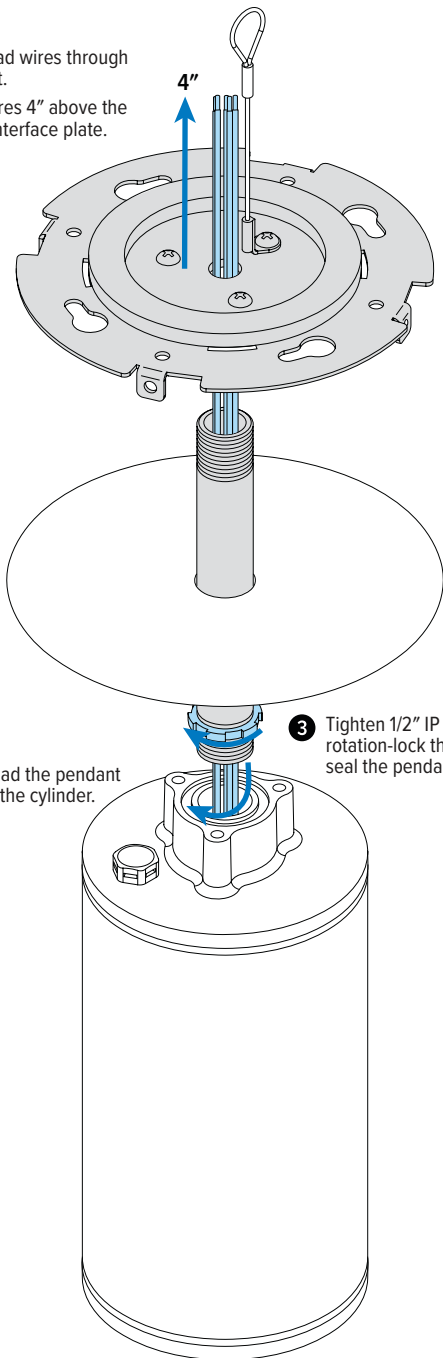
# OUTDOOR CYLINDERS – PENDANT

## INSTALLATION INSTRUCTIONS

### STEP 3 FIXTURE PREPARATION

#### A. Install pendant hardware

- 1 Route all lead wires through the pendant.  
Pull lead wires 4" above the TwistLock interface plate.

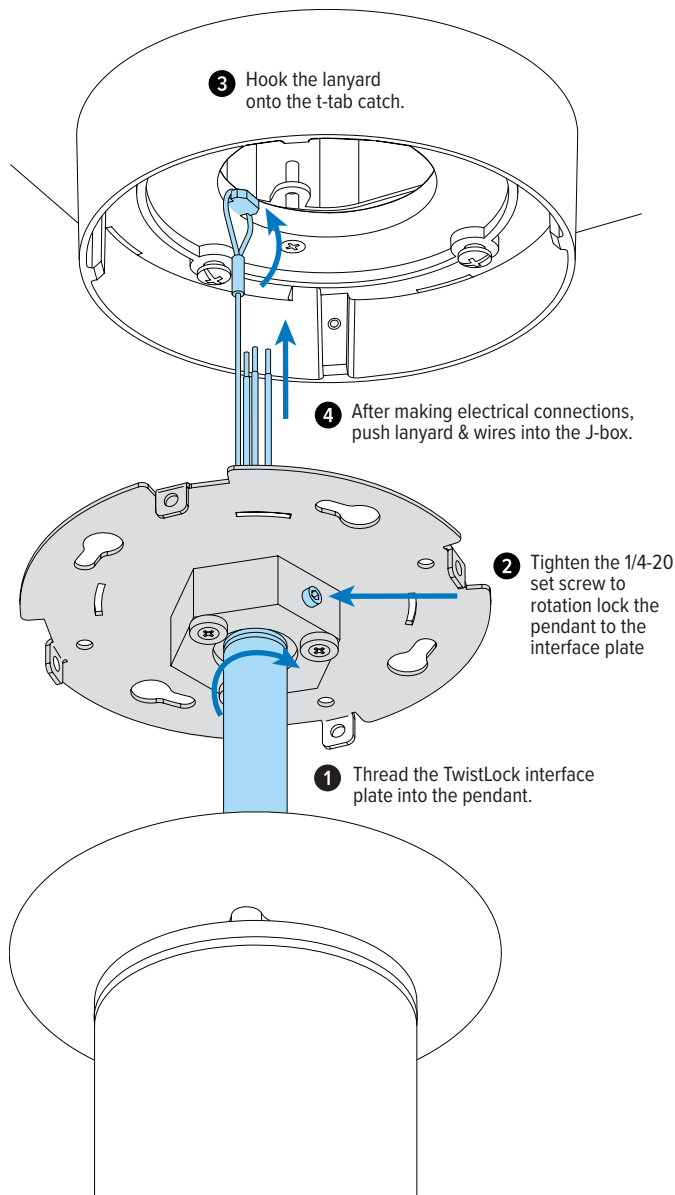


# OUTDOOR CYLINDERS – PENDANT

## INSTALLATION INSTRUCTIONS

### STEP 4 WIRING

#### A. Provide temporary fixture support

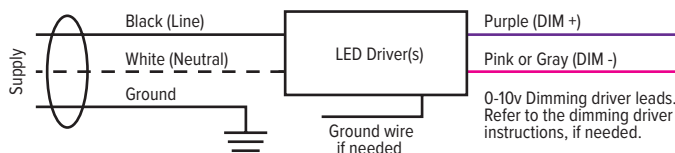


#### B. Make power input and dimming control electrical connections in accordance with NEC and local codes. Low-voltage lead terminations for cylinders with remote driver box.

Driver/power supply disconnects accept #12 – #16 AWG stranded or solid wire.

Attach power supply and ground wires using UL listed wire connectors.

Please consult factory for other driver configurations or emergency driver wiring diagrams.

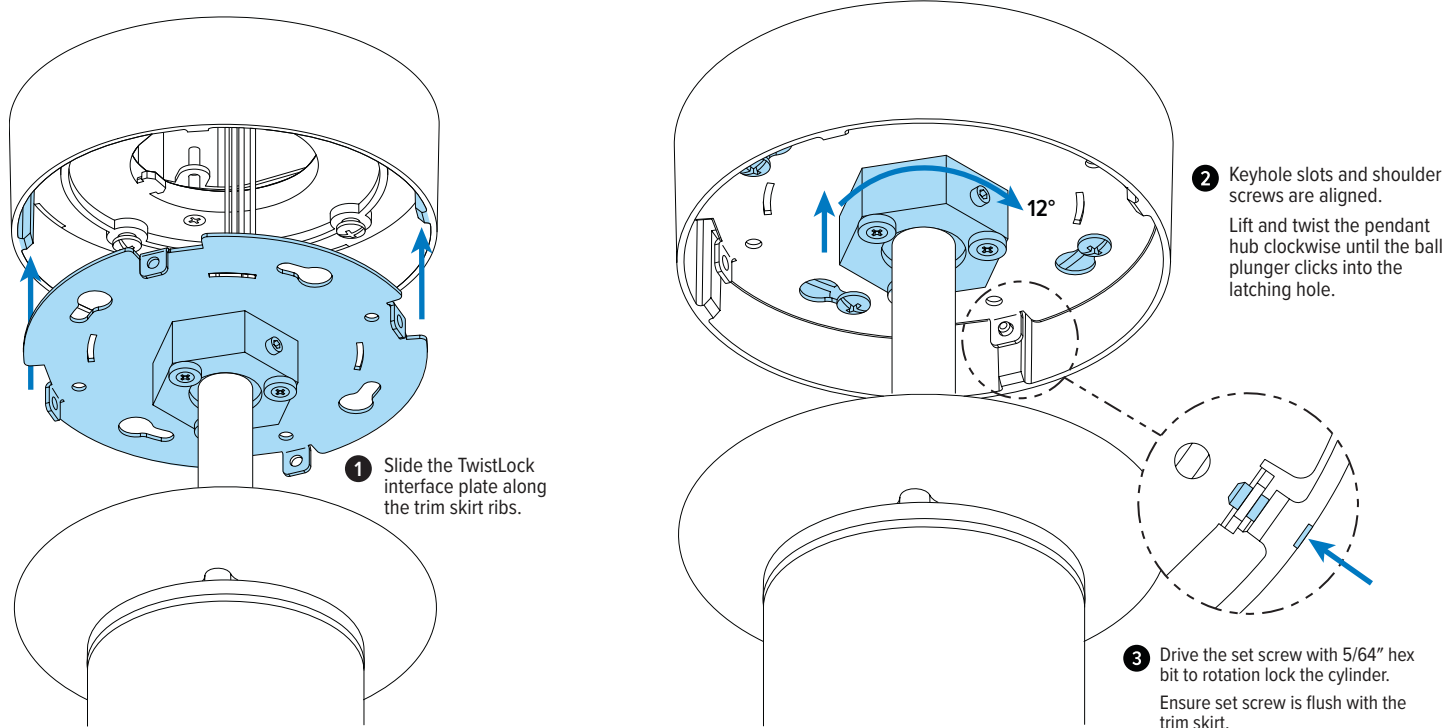


# OUTDOOR CYLINDERS – PENDANT

## INSTALLATION INSTRUCTIONS

### STEP 5 MOUNTING

A. Attach cylinder to trim skirt and secure



### STEP 6 FINISHING

A. Install cover plate

