

OUTDOOR CYLINDERS – WALL

INSTALLATION INSTRUCTIONS



WARNING:

- This product must be installed in accordance with the applicable installation code by a person familiar with the construction and operation of the product and the hazards involved.
- Make sure all electrical power is turned off while installing the fixture.
- This luminaire must be adequately grounded for protection against shock hazards and to assure proper operation.
- Disconnect power before servicing.
- LEDs are ESD (Electro Static Discharge) sensitive devices that can be easily damaged if the proper ESD mitigating steps are not taken.
- LEDs are very sensitive to mechanical damage. Caution must be taken to avoid damage to the LEDs.
- ESD or mechanical damage voids all warranties.
- Suitable for dry and damp locations.

FOR USE WITH

- W4CR
- W4CRDI
- W6CR
- W6CRDI

CONTENTS

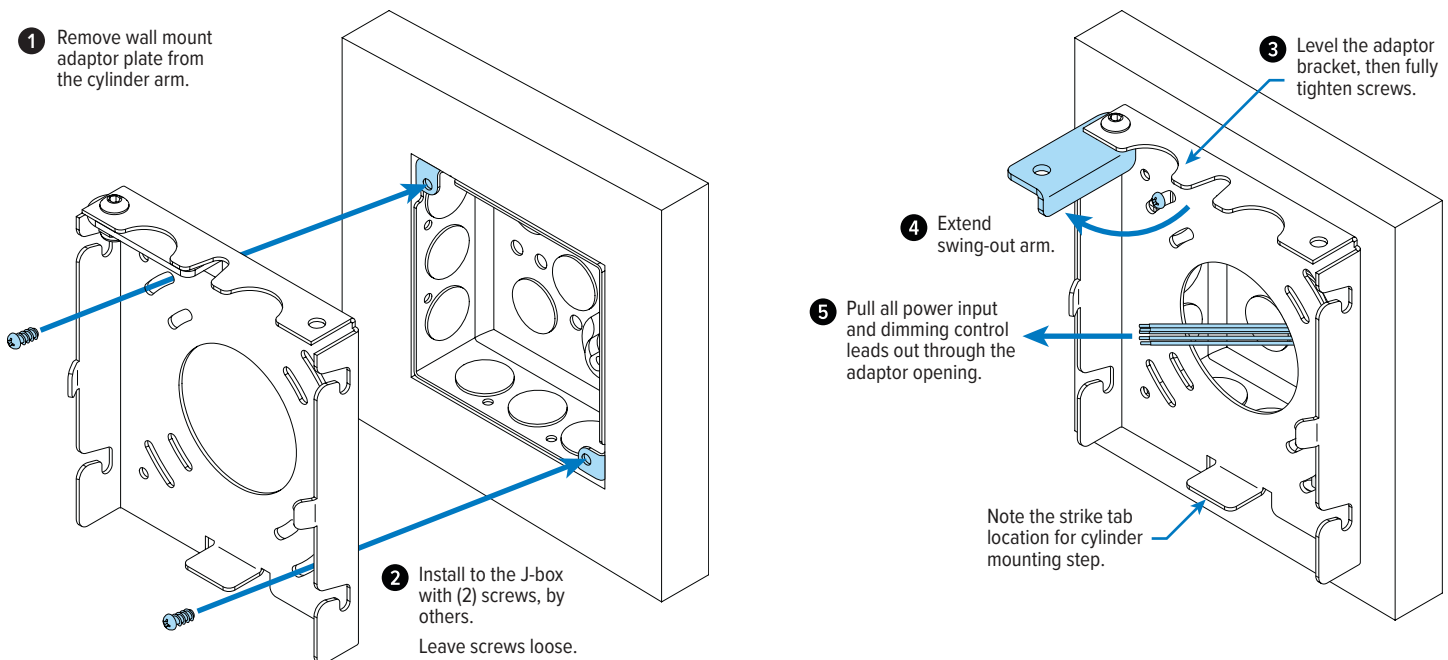
STEP 1 PREPARATION.....	1
STEP 2 WIRING.....	2
STEP 3 MOUNTING	2

TOOLS REQUIRED

- Pre-installed 4" square galvanized recessed junction box, by others
- (2) J-box screws, by others
- 3/32" hex bit, by others
- Silicone caulk, by others

STEP 1 PREPARATION

A. Install wall mount adaptor

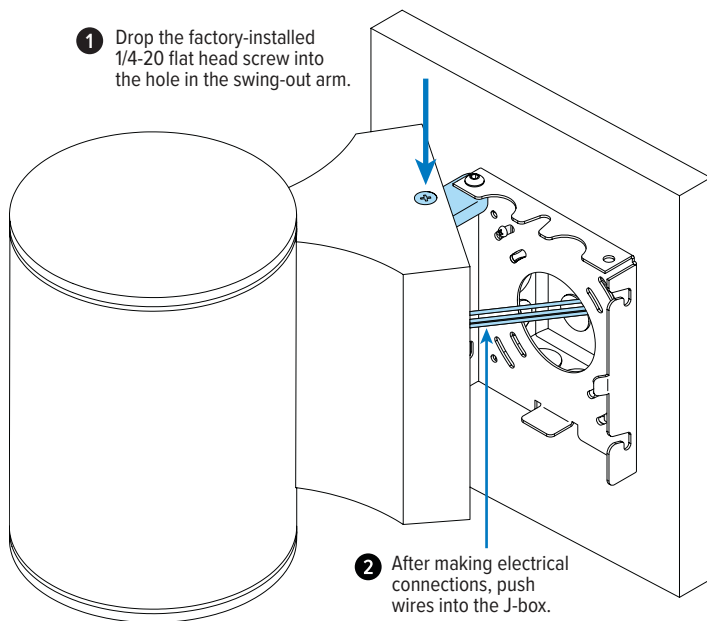


OUTDOOR CYLINDERS – WALL

INSTALLATION INSTRUCTIONS

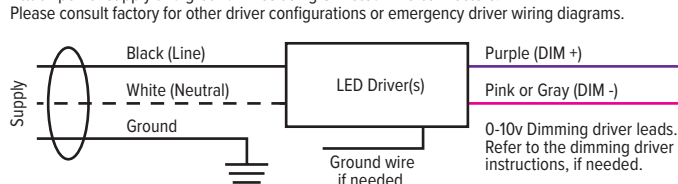
STEP 2 WIRING

A. Provide temporary fixture support



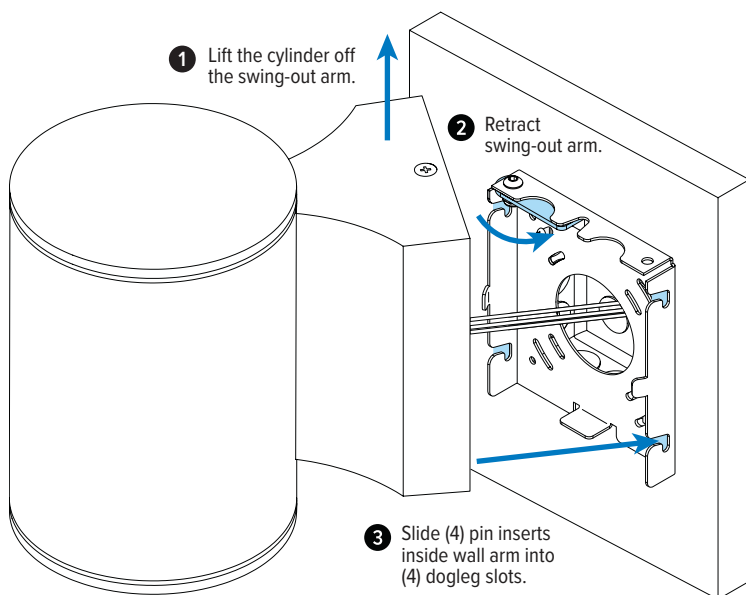
B. Make power input and dimming control electrical connections in accordance with NEC and local codes. Low-voltage lead terminations for cylinders with remote driver box.

Driver/power supply disconnects accept #12 – #16 AWG stranded or solid wire. Attach power supply and ground wires using UL listed wire connectors. Please consult factory for other driver configurations or emergency driver wiring diagrams.



STEP 3 MOUNTING

A. Attach cylinder wall arm to wall mount adaptor



B. Secure cylinder, then caulk

IMPORTANT: Silicone caulk **MUST** be applied around the **ENTIRE** perimeter of the wall arm, where it meets the wall.

