

# RNDS SERIES

## INSTALLATION INSTRUCTIONS



### WARNING:

- This product must be installed in accordance with the applicable installation code by a person familiar with the construction and operation of the product and the hazards involved.
- Make sure all electrical power is turned off while installing the fixture.
- This luminaire must be adequately grounded for protection against shock hazards and to assure proper operation.
- Disconnect power before servicing.

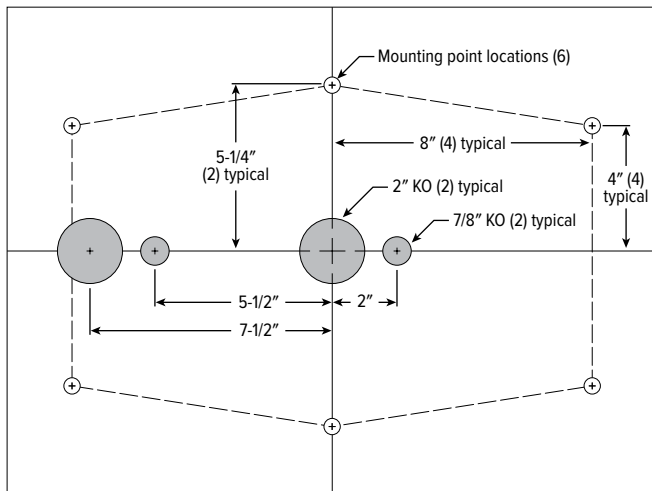
- LEDs are ESD (Electro Static Discharge) sensitive devices that can be easily damaged if the proper ESD mitigating steps are not taken.
- LEDs are very sensitive to mechanical damage. Caution must be taken to avoid damage to the LEDs.
- ESD or mechanical damage voids all warranties.
- Suitable for dry and damp locations.

### A. SURFACE MOUNT

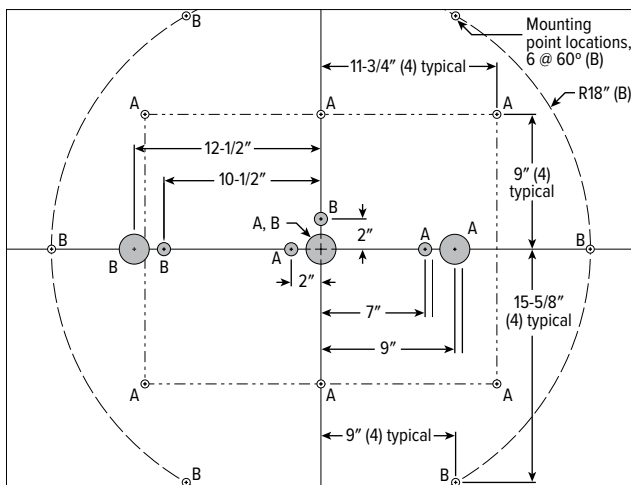
- STEP 1:** Using full size template provided, transfer mounting points to ceiling. See example (not to scale), FIG A.2.1
- STEP 2:** Secure housing to mounting surface using adequate hardware (provided by others) that can safely support the fixture

FIG A.2.1

RNDS-2



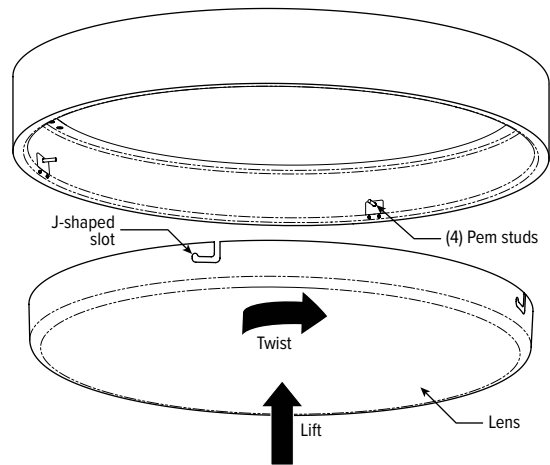
RNDS-3 | RNDS-4



Mounting Point Legend:	Power Feed Locations:
--- (A) RNDS 3'	⊕ 7/8" KO
--- (B) RNDS 4'	⊙ 2" KO

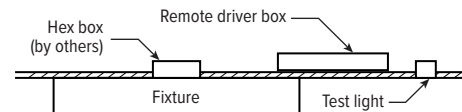
### B. LIFT-AND-TWIST LENS INSTALLATION

- STEP 1:** Align vertical portion of the "J-shaped" slots in lens to pem studs protruding from the perimeter of the interior ring in the fixture. Lift the lens up until the pem studs meet the bottom of the vertical slot and then twist clockwise so that the studs lock the lens into place.



### C. EMERGENCY BATTERIES (REMOTE MOUNT)

- STEP 1:** Install remote EM box per local codes and connect to 4" ceiling hex box.
- STEP 2:** Connect incoming power.
- STEP 3:** Connect EM unswitched power.
- STEP 4:** Plug (2) red wires in remote EM box to charge battery.
- STEP 5:** Connect wiring to cord from LEDs.
- STEP 6:** Cross bar for hex box installed for cover, canopy, and hanging cable.



SEE NEXT PAGE FOR WIRING DIAGRAM

# RNDS SERIES

## INSTALLATION INSTRUCTIONS

### D. WIRING DIAGRAM

Make electrical connections in accordance with NEC and local codes.

