

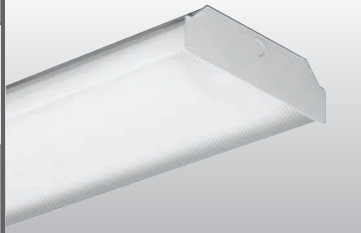
NARROW LOW-PROFILE WRAP

17

T5 | T8

CATALOG #: _____ TYPE: _____

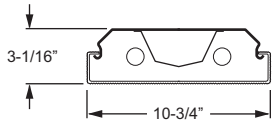
PROJECT: _____ NOTES: _____



EXAMPLE → **17 - 4 - 2 32 - A - OPTIONS - EB2 - UNV**

SERIES NOM. L. TOTAL WATTAGE/LAMPS SHIELDING OPTIONS BALLAST TYPE VOLTAGE

CROSS SECTION



ORDERING INFORMATION

SERIES
17 Narrow Low-Profile Wrap

NOMINAL LENGTH

2	2'
4	4'
8	8'

TOTAL LAMPS
2 or 4 2-lamp cross section

LAMP WATTAGE/TYPE

14T5S	2', 14-watt T5
17	2', 17-watt T8
28T5S	4', 28-watt T5
32	4', 32-watt T8

SHIELDING
A Clear prismatic acrylic diffuser

OPTIONS
 See Technical Info for [mounting accessories](#) and [generic EM ballast options](#) (must specify voltage).

BALLAST TYPE
 See Technical Info for complete [ballast offering](#).
EB2 2-lamp electronic ballast
EB4 4-lamp electronic ballast

VOLTAGE

120	120V
277	277V
UNV	120-277V
347	347V

FEATURES

- ▶ Low-profile wrap-around provides uniform downward light distribution and subtle side illumination
- ▶ Shallow depth provides sleek, low-profile appearance.
- ▶ Diffuser is secured continuously along luminaire sides.
- ▶ Mounts easily as a single fixture or in continuous row installations.
- ▶ Wireway is accessible without the use of tools.
- ▶ Ballast secured by two captive bolts and nuts to ensure a tight, reliable fit for maximum heat dissipation.
- ▶ This fixture is proudly made in the USA.

PHOTOMETRY

Catalog #: 17-4-232-A-EB2-UNV

SPECIFICATIONS

Housing – 20-gauge die-formed C.R.S. End plates constructed of 19-gauge die-formed C.R.S.

Shielding – Clear prismatic acrylic diffuser with 15% DR additive, .100" nominal thickness. Prismatic bottom/continuous wrap sides.

Finish – 92% minimum average reflective white polyester powder coat bonded to phosphate-free, multi-stage pretreated metal. All parts painted after fabrication to facilitate installation, increase efficiency, and inhibit corrosion.

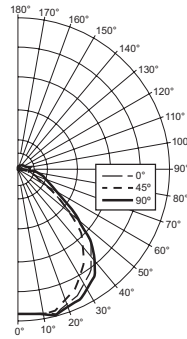
Electrical – Electronic ballast standard, instant start T8, program start T5, rated class P.

Mounting – Surface or suspended.

Labels – UL/CUL listed as fluorescent luminaire suitable for dry or damp locations.

TEST REPORT INFORMATION

- ▶ Test Report #: 8301.0
- ▶ Date: 06/02/95
- ▶ Lamp Type: F32T8/735
- ▶ Lamp Quantity: 2



CANDLEPOWER DISTRIBUTION

Vertical Angle	Horizontal Angle			Zonal Lumens
	0°	45°	90°	
0°	1582.	1582.	1582.	
5°	1591.	1592.	1594.	151.9
15°	1604.	1629.	1655.	461.7
25°	1453.	1530.	1575.	704.5
35°	1263.	1388.	1450.	862.9
45°	992.	1139.	1139.	853.7
55°	563.	672.	671.	582.5
65°	285.	383.	378.	355.2
75°	150.	249.	293.	246.9
85°	49.	63.	177.	127.7
90°	0.	63.	121.	
95°	0.	60.	127.	70.8
105°	4.	84.	146.	85.7
115°	11.	79.	99.	67.0
125°	17.	57.	71.	46.4
135°	20.	51.	60.	36.0
145°	23.	52.	62.	29.9
155°	23.	41.	49.	17.8
165°	27.	36.	41.	9.9
175°	20.	22.	22.	2.0
180°	20.	20.	20.	

LUMEN SUMMARY

Zone	Lumens	% Lamp	% Fixture
0° - 30°	1318.	32.1	28.0
0° - 40°	2181.	38.3	46.3
0° - 60°	3617.	63.5	76.8
0° - 90°	4347.	76.3	92.2
90° - 120°	223.	3.9	4.7
90° - 130°	270.	4.7	5.7
90° - 150°	336.	5.9	7.1
90° - 180°	366.	6.4	7.8
Total Luminaire:			
0° - 180°	4713.	82.7	100.0

Total Luminaire Optical Efficiency: 82.7%
Spacing Criteria: Across: 1.3
Diagonal: 1.4

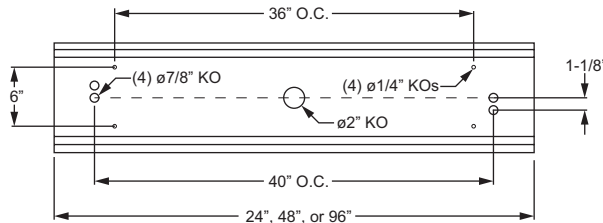
ZONAL CAVITY COEFFICIENTS

	Ceiling			Wall			Floor		
	.80	.70	.50	.70	.50	.30	.50	.30	.10
0	.97	.97	.97	.94	.94	.94	.88	.88	.88
1	.89	.86	.82	.86	.83	.80	.79	.76	.74
2	.82	.76	.71	.79	.74	.69	.70	.66	.63
3	.76	.68	.62	.73	.66	.61	.63	.58	.54
4	.70	.61	.54	.67	.59	.53	.56	.51	.47
5	.64	.54	.47	.62	.53	.47	.51	.45	.41
6	.59	.49	.42	.57	.48	.41	.46	.40	.36
7	.55	.44	.37	.53	.43	.37	.41	.35	.31
8	.50	.40	.33	.49	.39	.32	.37	.31	.27
9	.46	.35	.29	.45	.35	.28	.33	.28	.24
10	.43	.32	.26	.42	.32	.25	.30	.25	.21

Effective Floor Cavity Reflectance = .20

FIXTURE DETAILS

BACK VIEW



Note: Midsection punching for 4' and 8' units only. 8' unit consists of duplicate 4' unit punching.