

CATALOG #: _____

Type: _____

PROJECT: _____

FEATURES

- Small profile installs inconspicuously in confined spaces
- Delivers uniform, glare-free task lighting for work areas
- Housing keyhole slots and knockouts provide quick and easy installation
- Individual or continuous row mounting
- All-welded construction provides long lasting performance
- Available with attractive rocker switch for easy on/off
- Optional anti-microbial white finish available for use in healthcare applications
- Maximize energy savings with efficacies up to 117 lm/W
- Available with Avi-on wireless fixture controls
- Made Right Here® in the USA

SPECIFICATIONS

- HOUSING – 20-gauge die-formed, welded C.R.S.
- SHIELDING – Diffuse matte acrylic, .080" thick.
- FINISH – 92% minimum average reflective white polyester powder coat bonded to phosphate-free, multi-stage pretreated metal. All parts painted after fabrication to facilitate installation, increase efficiency, and inhibit corrosion.
- ELECTRICAL – High-quality mid-power LED board(s). See fixture performance data for lumen maintenance. 25°C maximum ambient operating temperature.
- MOUNTING – Surface.
- LISTINGS –
 - cCSAus certified as luminaire suitable for dry or damp locations.
- WARRANTY – 5-year limited warranty, see hew.com/warranty.

ORDERING EXAMPLE: 1SF 4 - L24/835 - AF12125 - OPTIONS - CONTROL/DRV - UNV

ORDERING INFO

SERIES	LENGTH	LUMENS ^[1]	CRI	CCT	SHIELDING
1SF	1 1'	1'	8 80	30 3000K	DMA Diffuse matte acrylic, .080" thick
	2 2'	L6 600lm		35 3500K	AF12125 Frosted acrylic, pattern #12, .125" thick
	3 3'	2'		40 4000K	
	4 4'	L12 1,200lm 3' L18 1,800lm 4' L24 2,400lm			

OPTIONS

GCO	Grounded convenience outlet ^[3]
C&P/120	6-1/2' cord and plug, NEMA 5-15P ^[4]
WRS/120	White rocker switch ^[5]
AMW	Anti-microbial white finish

CONTROL ^[2]

–	None
AVI-LVFA	Avi-on wireless fixture control ^[6]
AVI-LVFA-CS2-PIR	Avi-on wireless fixture control with PIR motion and daylight sensor ^[7]

DRIVER ^[8]

DIM	Driver with external dimming wires	120	120V
DRV	Driver without external dimming wires	277	277V
DA	Driver with 12V auxiliary power, without external dimming wires ^[9]	UNV	120-277V

VOLTAGE



NOTES

- ¹ Lumen output based on 3500 CCT. Actual lumens may vary +/-5%.
- ² See page 3 for AVI-ON BLUETOOTH WIRELESS CONTROL DETAILS. See page 1 for AVI-ON BLUETOOTH WIRELESS CONTROL DETAILS. See page 4 for ADDITIONAL CONTROL OPTIONS.
- ³ 120V only; not available with 1' fixture; cannot be used with occupancy sensor in 2' fixture.

- ⁴ 120V only.
- ⁵ 120V only. Not available with 1' fixture.
- ⁶ DA Driver only. Not available with 1' fixture.
- ⁷ DA Driver only. Not available with 1' fixture.
- ⁸ Consult factory for additional driver options.
- ⁹ Avi-on Controls only.



FIXTURE PERFORMANCE DATA

	LED PACKAGE	DELIVERED LUMENS	WATTAGE	EFFICACY (lm/W)	LUMEN MAINTENANCE		
					L80	L85	L90
1'	L6	610	5.9	102.9	>72000	>72000	50,000
2'	L12	1,283	11.4	112.7	>72000	58,000	36,000
3'	L18	1,857	16.0	116.4	>72000	>72000	50,000
4'	L24	2,435	20.8	117.2	>72000	58,000	36,000

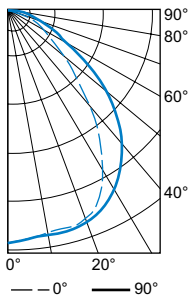
MULTIPLIER TABLE

80 CRI	COLOR TEMPERATURE	
	CCT	CONVERSION FACTOR
	3000K	0.99
3500K	1.00	
4000K	1.03	

- Photometrics tested in accordance with IESNA LM-79. Results shown are based on 25°C ambient temperature.
- Wattage shown is average for 120V through 277V input.
- Results based on 3500K, 80 CRI, actual lumens may vary +/-5%
- Predicted lumen maintenance calculated from LED manufacturer IES LM-80 data and In situ temperature measurement.
- Predicted lumen maintenance calculated in accordance with IES TM-21 per Energy Star (R) TM-21 Calculator rev. 02.08.16.
- Use multiplier table to calculate additional options.

PHOTOMETRY

1SF-4-L24/835-AF12125 Total Luminaire Output: 2435 lumens; 29 Watts | Efficacy: 84.1 lm/W | 80 CRI; 3500K CCT

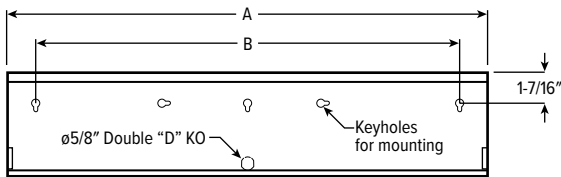


VERTICAL ANGLE	HORIZONTAL ANGLE			ZONAL LUMENS
	0°	45°	90°	
0	1077	1077	1077	102
10	1045	1049	1060	297
20	1032	1043	1049	457
30	875	933	976	514
40	589	710	819	452
50	340	453	598	318
60	184	232	335	177
70	92	103	138	84
80	50	50	50	36
90	17	18	10	0

LUMEN SUMMARY	ZONE	LUMENS	% FIXTURE
	0 - 30	855	35
	0 - 40	1369	56
	0 - 60	2139	88
	0 - 90	2435	100
	0 - 180	2435	100

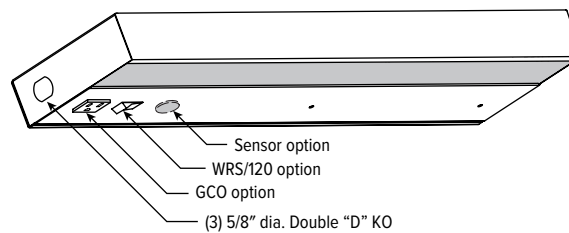
FIXTURE DETAILS

BACK VIEW



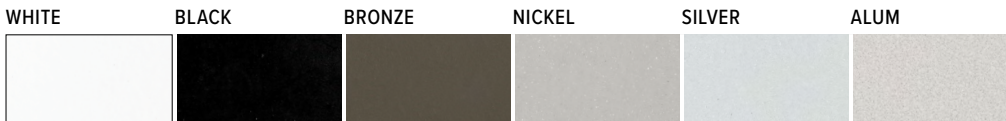
Back of housing provided with adequate keyhole slots and knockout for mounting and wiring.

OPTION DETAILS



NOMINAL LENGTH	ACTUAL LENGTH (A)	ACTUAL LENGTH (B)
1'	12-1/8"	7-1/2"
2'	22-5/8"	20"
3'	34-3/8"	29"
4'	46-1/4"	38"

FINISH OPTIONS



For custom color, please specify RAL code or a manufacturer code with description. All custom colors other than RAL require two sample swatches, minimum 1" square.



1SF LED Solid Front Under Cabinet Light

AVI-ON BLUETOOTH WIRELESS CONTROL DETAILS

AVI-ON NETWORK FEATURES

Simple

- Gateway-free distributed control
- Factory pre-commissioning
- Contractor friendly installation
- Occupancy/vacancy/daylight sensing

Scalable

- Virtually unlimited network size
- Spans small areas to large warehouses
- Flexible control strategies

Secure

- Optional cloud connectivity
- UL IoT platinum security rating
- DLC 5.0 compliant

DIGITAL INSTALLATION TOOLS

Avi-On mobile apps provide intuitive, quick installation and commissioning. Pro tools are available to qualified installers.



Commissioning Mobile App

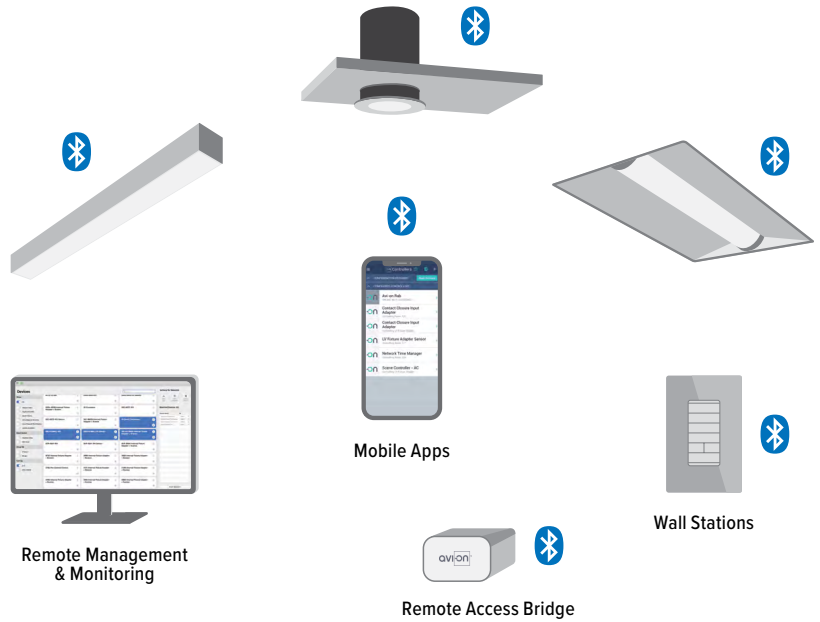


Zone Scanner Web App



Commissioning Pro App

SYSTEM COMPONENTS



The Bluetooth® word mark and logos are registered trademarks owned by Bluetooth SIG, Inc. and any use of such marks by Avi-On is under license. Other trademarks and trade names are those of their respective owners.

ACCESSORIES

WALL STATIONS	
AVI-2401AC	Scene controller - numbered 1-4, 120-277VAC
AVI-2402BAT	Scene controller - numbered 1-4, battery powered
AVI-2401AC-2	Dimmer with presets - percentages, 120-277VAC
AVI-2402BAT-2	Dimmer with presets - percentages, battery powered
AVI-2401AC-3	On/off/dimming, 120-277VAC
AVI-2402BAT-3	On/off/dimming, battery powered
CONNECTIVITY	
AVI-2001RAB-01-P	Remote access bridge for projects 100 or greater
AVI-2001RAB-01-C	Remote access bridge for projects less than 100
AVI-KIT-NTM	Network time manager with Battery Backup
CEILING MOUNT SENSORS	
AVI-KIT-SEN-DUCM	PIR motion and ultrasonic sensor kit
AVI-KIT-SEN-ICM	PIR motion and photocell sensor kit

For load controllers and additional accessory info, see hew.com/avi-on

AVI-LVFA-CS2-PIR Avi-on wireless fixture control with PIR motion and daylight sensor. DA Driver only.

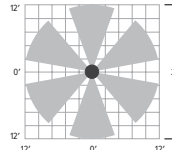
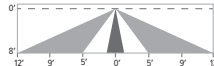
SPECIFICATIONS	
TYPE	PIR Motion + Daylight
MOUNTING HEIGHT	8' - 10'
DETECTION ANGLE	360°
TEMPERATURE RANGE	-30° to 50°C
RELATIVE HUMIDITY	10 to 80% non-condensing
IP RATING	IP20
MANUFACTURER	Avi-On

Bluetooth® Lighting Controls

SENSOR COVERAGE PATTERNS

Side View

8' height: Ø24' coverage



SENSOR DETAIL



1SF^{LED} Solid Front Under Cabinet Light

ADDITIONAL CONTROL OPTIONS

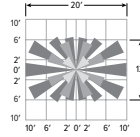
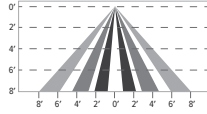
Not available with 1' fixture.

LV-OSF10-IOW-___ Leviton PIR motion sensor. Must specify voltage: 120 or 277. Factory-installed.

SPECIFICATIONS	
TYPE	PIR Motion
MOUNTING HEIGHT	8'
DETECTION ANGLE	360°
TEMPERATURE RANGE	0° to 55°C
RELATIVE HUMIDITY	20% to 90% non-condensing

SENSOR COVERAGE PATTERNS

8' height: ø16' coverage



SENSOR DETAIL

