

UP/DOWN WALL MOUNT

29

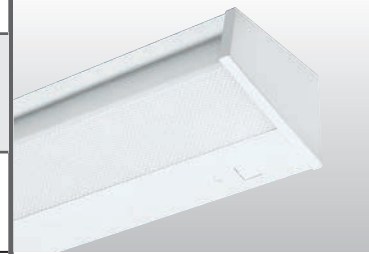
T5 | T8

CATALOG #: _____ TYPE: _____

PROJECT: _____ NOTES: _____

EXAMPLE **29 - 4 - 2 32 - A - OPTIONS - EB2 - UNV**

↓
SERIES
↓
NOMINAL LENGTH
↓
TOTAL WATTAGE/
LAMPS TYPE
↓
SHIELDING
↓
OPTIONS
↓
BALLAST TYPE
↓
VOLTAGE



CROSS SECTIONS



ORDERING INFORMATION

SERIES
29 Up/Down Wall Mount

NOMINAL LENGTH

2	2'
3	3'
4	4'

TOTAL LAMPS
1 or 2

LAMP WATTAGE/TYPE

2' LAMP OPTIONS

17	2', 17-watt T8
40TT	2', 40-watt long twin tube

3' LAMP OPTIONS

25	3', 25-watt T8
----	----------------

4' LAMP OPTIONS

32	4', 32-watt T8
----	----------------

SHIELDING
A Acrylic

OPTIONS

For generic EM ballast options (must specify voltage), see [Technical Info](#).
For color options, visit the 29 Series at [hew.com](#).

NL13Q/EB1*____ Night light, one 13-watt, 4-pin, G24q-1 base CFL lamp (by others) and electronic ballast standard, must specify 120V, 277V, or UNV

CT Closed-top

PS/120 Pull switch, single circuit (120V only)

DL-PS/120 Divided lamp compartment (2-lamp unit with single-circuit pull switch operating downlight. Uplight is operated via wall switch, requires EB1/1.) (120V only)

DL-PS2/120 Divided lamp compartment (2-lamp unit with 2-circuit internal, 4-position pull switch operating both lamps, requires EB1/1) (120V only)

DL Divided lamp compartment

GLR Fuse, fast blow (specify voltage), requires one per ballast

GCO Grounded convenience outlet (120V only)

GFCO Ground fault convenience outlet (120V only)

AMW Anti-microbial white finish

LVC1_ 1-circuit low-voltage controller, specify U (Up), D (Down), or UD (Up and Down; controlled together), 120V or 277V only, not dimming compatible

LVC2_ 2-circuit low-voltage controller, UD (Up and Down; up and down controlled separately), 120V or 277V only, not dimming compatible

BALLAST TYPE

EB1 1-lamp electronic ballast

EB2 2-lamp electronic ballast

EB1/1 (2) 1-lamp electronic ballasts

VOLTAGE

120	120V
277	277V
UNV	120-277V
347	347V

FEATURES

- ▶ Available in various uplight, downlight, closed-top, and divided lamp options.
- ▶ Pull switch and grounded convenience outlet options available (120V only).
- ▶ All-welded construction.
- ▶ Clear prismatic diffusers enclose both top and bottom lamps.
- ▶ Available in T8 or long twin tube lamps for design flexibility.
- ▶ Versatile, durable fixture is ideal for many different applications.
- ▶ Ballast secured by two captive bolts and nuts to ensure a tight, reliable fit for maximum heat dissipation.
- ▶ Optional anti-microbial white finish available for use in healthcare applications.
- ▶ This fixture is proudly made in the USA.



PHOTOMETRY

29-4-232-A Report #: 8361.0; 07/17/95; Lamp Type: F32T8/735; Lamp Quantity: 2;
Total Luminaire Optical Efficiency: 79.7%; Effective Floor Cavity Reflectance = .20

SPECIFICATIONS

Housing – 20-gauge, die-formed, welded C.R.S.

Reflective Surfaces – 92% minimum average reflective white polyester powder coat on interior steel components.

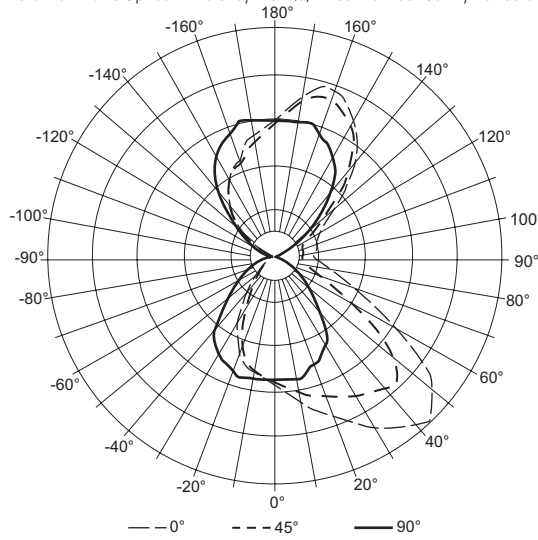
Shielding – Clear prismatic acrylic top and bottom lens. High-impact acrylic bottom lens.

Finish – 92% minimum average reflective white polyester powder coat bonded to phosphate-free, multi-stage pretreated metal. All parts painted after fabrication to facilitate installation, increase efficiency, and inhibit corrosion.

Electrical – Electronic ballast standard, instant start T8, program start T5, rated Class P.

Mounting – Directly to wall.

Labels – UL/CUL listed as fluorescent luminaire suitable for dry or damp locations.



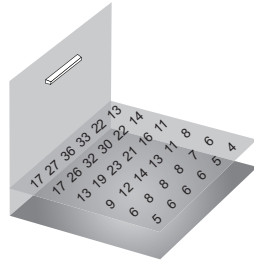
Vertical Angle	Horizontal Angle					Zonal Lumens
	0°	45°	90°	135°	180°	
0	764	764	764	764	764	
5	803	786	761	742	728	72.9
15	959	893	778	684	645	223.6
25	1097	941	708	500	385	333.3
35	1275	1026	620	288	210	414.6
45	1408	1111	399	120	110	459.6
55	1207	851	243	54	48	395.9
65	709	427	145	38	17	246.7
75	456	238	57	0	0	136.2
85	301	179	15	0	0	97.1
90	249	179	0	0	0	
95	265	201	10	29	31	114.3
105	286	196	76	67	79	137.5
115	307	201	140	99	124	166.5
125	416	357	271	219	227	264.0
135	644	600	455	363	372	367.9
145	887	845	658	519	511	425.4
155	1046	999	776	603	589	371.7
165	1096	1040	862	728	681	249.6
175	929	903	835	787	764	80.5
180	838	838	838	838	838	

		ZONAL CAVITY COEFFICIENTS									
		.80			.70			.50			
ROOM CAVITY RATIO	Ceiling										
	Wall	.70	.50	.30	.70	.50	.30	.50	.30	.10	
0		.86	.86	.86	.80	.80	.80	.68	.68	.68	
1		.79	.75	.72	.73	.70	.67	.59	.57	.55	
2		.72	.66	.61	.66	.61	.57	.52	.49	.46	
3		.66	.58	.52	.61	.54	.49	.46	.42	.39	
4		.60	.51	.45	.55	.48	.42	.41	.37	.34	
5		.55	.46	.39	.51	.42	.37	.37	.32	.29	
6		.50	.41	.34	.47	.38	.32	.33	.28	.25	
7		.46	.37	.30	.43	.34	.28	.29	.25	.22	
8		.43	.33	.27	.40	.31	.25	.26	.22	.19	
9		.40	.30	.24	.36	.28	.22	.24	.19	.16	
10		.37	.27	.21	.34	.25	.20	.22	.17	.14	

Zone	Lumens	% Lamp	% Fixture
0 - 30	630	11.0	13.8
0 - 40	1078	18.3	22.9
0 - 60	1950	33.0	41.5
0 - 90	2457	41.7	52.3
90 - 120	434	7.4	9.2
90 - 130	709	12.0	15.1
90 - 150	1526	25.9	32.5
90 - 180	2245	38.0	47.7
0 - 180	4702	79.7	100.0

FIXTURE DETAILS

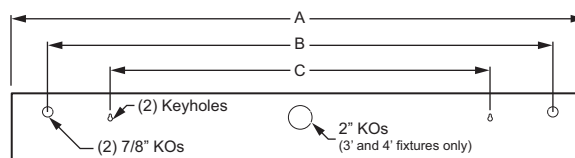
FOOTCANDLE ESTIMATOR



Footcandle calculations based on standard reflectance of 80/50/20 and a light loss factor of .85.

Fixture installed at 8' mounting height in 12' x 12' room with 10'-0" ceiling. Values shown are at 36" work surface height.

BACKVIEW



	A	B	C
2'	24-5/8" O.C.	19" O.C.	16" O.C.
3'	36-5/8" O.C.	29" O.C.	32" O.C.
4'	48-5/8" O.C.	42-1/2" O.C.	32" O.C.