

4AR dim to WARM

4.5" Adjustable Downlight – Round

FIXTURE PERFORMANCE DATA

OPEN REFLECTOR TRIM TYPE

| | DISTRIBUTION | DELIVERED LUMENS | CCT AT 100% (FULL OUTPUT) | CCT AT 1% (FULL DIM) | WATTAGE | EFFICACY (lm/W) |
|-----|--------------|------------------|---------------------------|----------------------|---------|-----------------|
| L7 | W | 466 | 3000K | 1800K | 14.0 | 37.3 |
| | M | 648 | | | 14.0 | 46.1 |
| | N | - | | | - | - |
| L12 | W | 818 | | | 23.4 | 35.0 |
| | M | 1136 | | | 23.4 | 48.6 |
| | N | - | | | - | - |
| L20 | W | 1339 | 37.7 | 35.5 | | |
| | M | 1860 | 37.7 | 49.4 | | |
| | N | - | - | - | | |

FLUSH LENS TRIM TYPE

| | DISTRIBUTION | DELIVERED LUMENS | CCT AT 100% (FULL OUTPUT) | CCT AT 1% (FULL DIM) | WATTAGE | EFFICACY (lm/W) |
|-----|--------------|------------------|---------------------------|----------------------|---------|-----------------|
| L7 | W | 462 | 3000K | 1800K | 14.0 | 33.0 |
| | M | 625 | | | 14.0 | 44.7 |
| | N | 656 | | | 14.0 | 46.8 |
| L12 | W | 811 | | | 23.4 | 34.7 |
| | M | 1096 | | | 23.4 | 46.9 |
| | N | 1149 | | | 23.4 | 49.2 |
| L20 | W | 1327 | 37.7 | 35.2 | | |
| | M | 1796 | 37.7 | 47.7 | | |
| | N | 1882 | 37.7 | 50.0 | | |

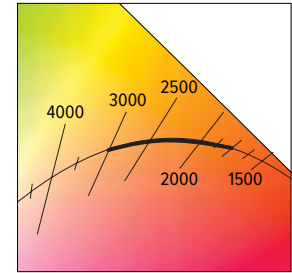
ANGLED LENS TRIM TYPE

| | DISTRIBUTION | DELIVERED LUMENS | CCT AT 100% (FULL OUTPUT) | CCT AT 1% (FULL DIM) | WATTAGE | EFFICACY (lm/W) |
|-----|--------------|------------------|---------------------------|----------------------|---------|-----------------|
| L7 | W | 330 | 3000K | 1800K | 14.0 | 23.6 |
| | M | 483 | | | 14.0 | 34.5 |
| | N | 586 | | | 14.0 | 41.9 |
| L12 | W | 578 | | | 23.4 | 24.7 |
| | M | 846 | | | 23.4 | 36.2 |
| | N | 1027 | | | 23.4 | 44.0 |
| L20 | W | 947 | 37.7 | 25.1 | | |
| | M | 1386 | 37.7 | 36.8 | | |
| | N | 1682 | 37.7 | 44.7 | | |

MULTIPLIER TABLES

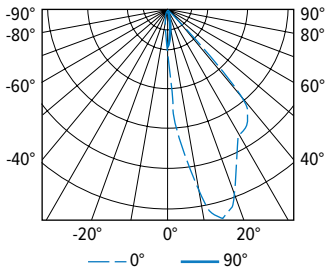
| OPEN REFLECTOR FINISH | | TRIM | |
|-----------------------|-------------------|-----------------|-------------------|
| CATALOG NUMBER | CONVERSION FACTOR | CATALOG NUMBER | CONVERSION FACTOR |
| CS | 1.00 | AD ¹ | 0.85 |
| WH | 0.89 | PD ¹ | 0.85 |
| BL | 0.79 | | |

- Distribution will also be affected, consult factory.
- Photometrics tested in accordance with IESNA LM-79. Results shown are based on 25°C ambient temperature.
- Wattage shown is based on 120V input.
- Results based on 3000K, 95 CRI, full output, 0° tilt, actual lumens may vary +/-5%
- Use multiplier tables to calculate additional options.



PHOTOMETRY

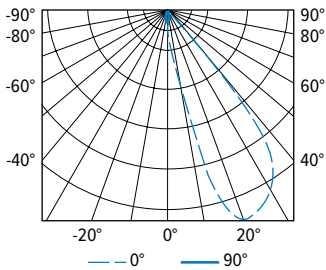
4AR-L20/9DW-DIM-UNV-OW-OF-CS (25° tilt) Total Luminaire Output: 1355 lumens; 37.7 Watts | Efficacy: 35.9 lm/W | 95.0 CRI; 3000K CCT



| CANDLEPOWER DISTRIBUTION | VERTICAL ANGLE | HORIZONTAL ANGLE | | | | | ZONAL LUMENS |
|--------------------------|----------------|------------------|------|-----|------|------|--------------|
| | | 0° | 45° | 90° | 135° | 180° | |
| 0 | 0 | 788 | 788 | 788 | 788 | 788 | |
| 5 | 5 | 2389 | 1675 | 653 | 270 | 195 | 97 |
| 15 | 15 | 4321 | 2360 | 253 | 61 | 40 | 319 |
| 25 | 25 | 3255 | 2150 | 64 | 17 | 15 | 425 |
| 35 | 35 | 2817 | 991 | 12 | 8 | 11 | 399 |
| 45 | 45 | 582 | 30 | 5 | 4 | 3 | 112 |
| 55 | 55 | 6 | 0 | 0 | 0 | 3 | 2 |
| 65 | 65 | 1 | 0 | 0 | 0 | 0 | 0 |
| 75 | 75 | 0 | 0 | 0 | 0 | 0 | 0 |
| 85 | 85 | 0 | 0 | 0 | 0 | 0 | 0 |
| 90 | 90 | 0 | 0 | 0 | 0 | 0 | 0 |

| LUMEN SUMMARY | ZONE | LUMENS | % FIXTURE |
|---------------|---------|--------|-----------|
| 0 - 40 | 0 - 40 | 1240 | 92 |
| 0 - 60 | 0 - 60 | 1354 | 100 |
| 0 - 90 | 0 - 90 | 1355 | 100 |
| 0 - 180 | 0 - 180 | 1355 | 100 |

4AR-L20/9DW-DIM-UNV-OM-OF-CS (25° tilt) Total Luminaire Output: 1677 lumens; 37.7 Watts | Efficacy: 44.5 lm/W | 95.0 CRI; 3000K CCT



| CANDLEPOWER DISTRIBUTION | VERTICAL ANGLE | HORIZONTAL ANGLE | | | | | ZONAL LUMENS |
|--------------------------|----------------|------------------|------|-----|------|------|--------------|
| | | 0° | 45° | 90° | 135° | 180° | |
| 0 | 0 | 410 | 410 | 410 | 410 | 410 | |
| 5 | 5 | 1166 | 777 | 365 | 197 | 161 | 55 |
| 15 | 15 | 5878 | 1449 | 183 | 60 | 35 | 332 |
| 25 | 25 | 6732 | 1472 | 69 | 13 | 11 | 621 |
| 35 | 35 | 5563 | 632 | 10 | 0 | 0 | 558 |
| 45 | 45 | 641 | 32 | 0 | 0 | 0 | 109 |
| 55 | 55 | 6 | 0 | 0 | 0 | 0 | 2 |
| 65 | 65 | 0 | 0 | 0 | 0 | 0 | 0 |
| 75 | 75 | 0 | 0 | 0 | 0 | 0 | 0 |
| 85 | 85 | 0 | 0 | 0 | 0 | 0 | 0 |
| 90 | 90 | 0 | 0 | 0 | 0 | 0 | 0 |

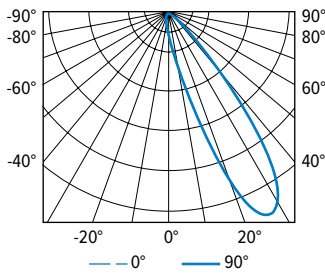
| LUMEN SUMMARY | ZONE | LUMENS | % FIXTURE |
|---------------|---------|--------|-----------|
| 0 - 40 | 0 - 40 | 1566 | 93 |
| 0 - 60 | 0 - 60 | 1677 | 100 |
| 0 - 90 | 0 - 90 | 1677 | 100 |
| 0 - 180 | 0 - 180 | 1677 | 100 |



4AR dim to WARM

4.5" Adjustable Downlight – Round

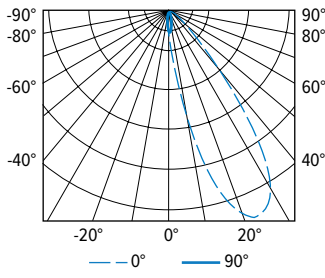
4AR-L20/9DW-DIM-UNV-LN-OF-CS (25° tilt) Total Luminaire Output: 1806 lumens; 37.7 Watts | Efficacy: 47.9 lm/W | 95.0 CRI; 4037K CCT



| CANDLEPOWER DISTRIBUTION | VERTICAL ANGLE | HORIZONTAL ANGLE | | | | | ZONAL LUMENS |
|--------------------------|----------------|------------------|------|-----|------|------|--------------|
| | | 0° | 45° | 90° | 135° | 180° | |
| | 0 | 306 | 306 | 306 | 306 | 306 | |
| | 5 | 871 | 663 | 297 | 152 | 129 | 45 |
| | 15 | 3783 | 1461 | 184 | 71 | 69 | 266 |
| | 25 | 6802 | 1557 | 86 | 58 | 64 | 589 |
| | 35 | 4947 | 786 | 42 | 45 | 55 | 544 |
| | 45 | 1442 | 212 | 26 | 41 | 56 | 242 |
| | 55 | 353 | 57 | 19 | 36 | 52 | 77 |
| | 65 | 61 | 22 | 13 | 25 | 40 | 30 |
| | 75 | 18 | 8 | 6 | 12 | 21 | 12 |
| | 85 | 0 | 0 | 0 | 0 | 0 | 1 |
| | 90 | 0 | 0 | 0 | 0 | 0 | |

| LUMEN SUMMARY | ZONE | LUMENS | % FIXTURE |
|---------------|---------|--------|-----------|
| | 0 - 40 | 1444 | 80 |
| | 0 - 60 | 1764 | 98 |
| | 0 - 90 | 1806 | 100 |
| | 0 - 180 | 1806 | 100 |

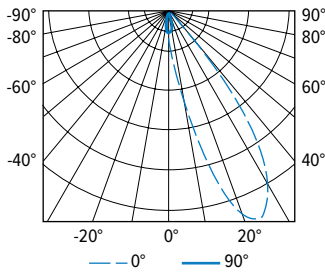
4AR-L20/9DW-DIM-UNV-LM-OF-WH (25° tilt) Total Luminaire Output: 1618 lumens; 37.7 Watts | Efficacy: 42.9 lm/W | 95.0 CRI; 3000K CCT



| CANDLEPOWER DISTRIBUTION | VERTICAL ANGLE | HORIZONTAL ANGLE | | | | | ZONAL LUMENS |
|--------------------------|----------------|------------------|------|-----|------|------|--------------|
| | | 0° | 45° | 90° | 135° | 180° | |
| | 0 | 494 | 494 | 494 | 494 | 494 | |
| | 5 | 1224 | 939 | 464 | 254 | 206 | 63 |
| | 15 | 3980 | 1723 | 286 | 113 | 98 | 295 |
| | 25 | 5194 | 1668 | 134 | 79 | 85 | 521 |
| | 35 | 3408 | 736 | 69 | 78 | 96 | 429 |
| | 45 | 954 | 182 | 51 | 81 | 103 | 185 |
| | 55 | 171 | 55 | 39 | 66 | 85 | 72 |
| | 65 | 42 | 22 | 23 | 44 | 58 | 36 |
| | 75 | 16 | 9 | 10 | 20 | 27 | 16 |
| | 85 | 2 | 0 | 0 | 0 | 1 | 2 |
| | 90 | 0 | 0 | 0 | 0 | 0 | |

| LUMEN SUMMARY | ZONE | LUMENS | % FIXTURE |
|---------------|---------|--------|-----------|
| | 0 - 40 | 1308 | 81 |
| | 0 - 60 | 1564 | 97 |
| | 0 - 90 | 1618 | 100 |
| | 0 - 180 | 1618 | 100 |

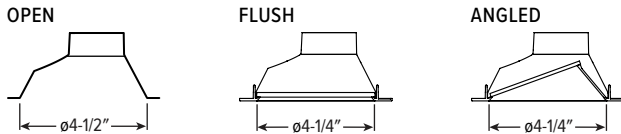
4AR-L20/9DW-DIM-UNV-AN-OF-WH (25° tilt) Total Luminaire Output: 1666 lumens; 37.7 Watts | Efficacy: 44.2 lm/W | 95.0 CRI; 3000K CCT



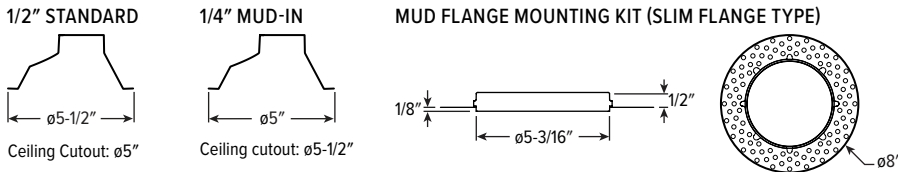
| CANDLEPOWER DISTRIBUTION | VERTICAL ANGLE | HORIZONTAL ANGLE | | | | | ZONAL LUMENS |
|--------------------------|----------------|------------------|------|-----|------|------|--------------|
| | | 0° | 45° | 90° | 135° | 180° | |
| | 0 | 297 | 297 | 297 | 297 | 297 | |
| | 5 | 760 | 621 | 286 | 148 | 119 | 41 |
| | 15 | 3522 | 1261 | 168 | 60 | 51 | 246 |
| | 25 | 7094 | 1333 | 70 | 36 | 36 | 563 |
| | 35 | 5685 | 624 | 31 | 25 | 26 | 550 |
| | 45 | 1638 | 137 | 17 | 20 | 23 | 216 |
| | 55 | 215 | 18 | 10 | 14 | 17 | 42 |
| | 65 | 18 | 6 | 4 | 6 | 6 | 7 |
| | 75 | 4 | 0 | 0 | 0 | 3 | 1 |
| | 85 | 0 | 0 | 0 | 0 | 0 | 0 |
| | 90 | 0 | 0 | 0 | 0 | 0 | |

| LUMEN SUMMARY | ZONE | LUMENS | % FIXTURE |
|---------------|---------|--------|-----------|
| | 0 - 40 | 1400 | 84 |
| | 0 - 60 | 1658 | 99 |
| | 0 - 90 | 1666 | 100 |
| | 0 - 180 | 1666 | 100 |

TRIM TYPE DETAILS



FLANGE TYPE DETAILS



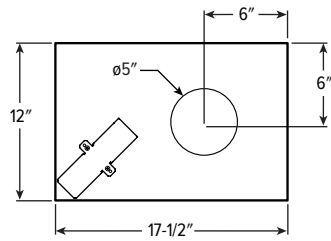
REFLECTOR FINISH DETAILS



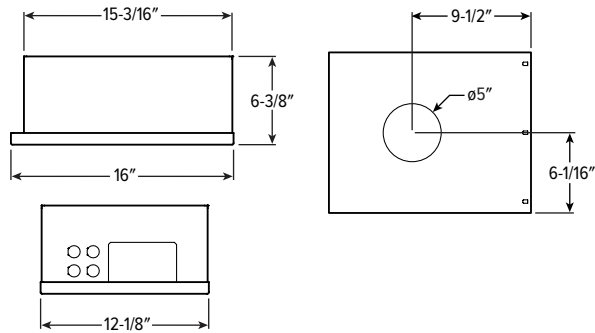
4AR dim to WARM 4.5" Adjustable Downlight – Round

MOUNTING TYPE DETAILS

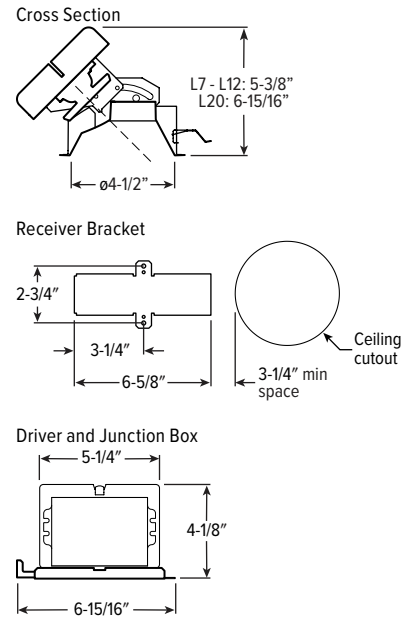
NEW CONSTRUCTION



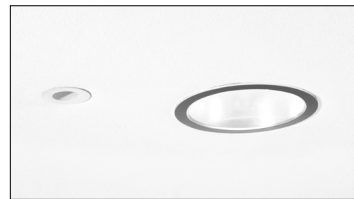
IC-RATED



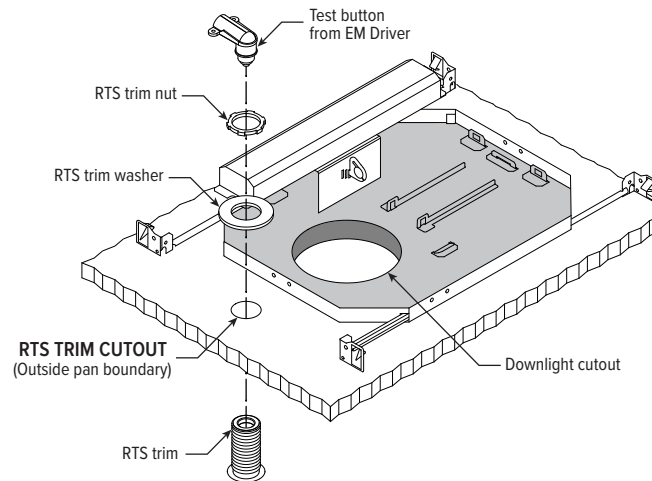
REMODEL



EM/10W/RTS DETAILS



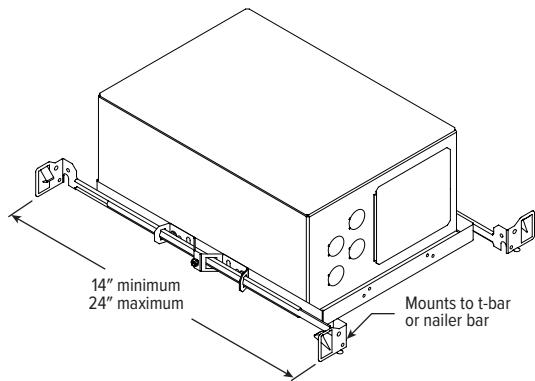
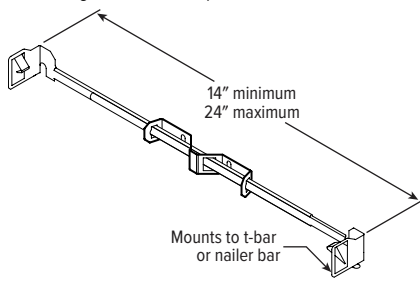
Shown Installed



4AR dim to **WARM** 4.5" Adjustable Downlight – Round

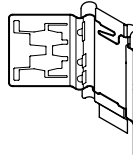
MOUNTING HARDWARE DETAILS

F1 Factory-installed 2-position fixed pan bracket, universal bar hanger included, ships uninstalled

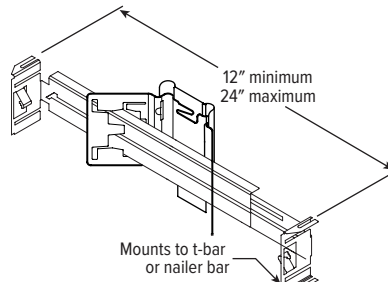


F1 with I Mounting Type

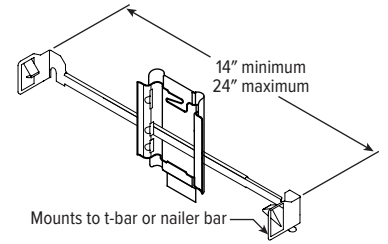
BA1 Adjustable butterfly pan bracket, bar hanger not included (N Mounting Type only)



BA2 Adjustable butterfly pan bracket, heavy-duty universal bar hanger included (N Mounting Type only)



CA1 Adjustable caterpillar pan bracket, universal bar hanger included (N Mounting Type only)



CA2 Adjustable caterpillar pan bracket, t-bar hanger included (N Mounting Type only)

