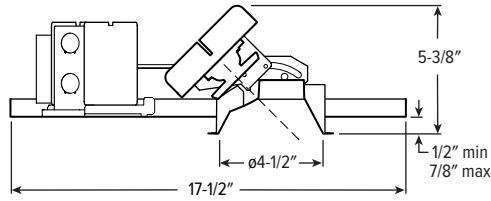


4AR tunable WHITE 4.5" Adjustable Downlight – Round



CATALOG #: _____

TYPE: _____

PROJECT: _____

NEW CONSTRUCTION AND REMODEL

ORDERING EXAMPLE: 4AR - L11/8TW - OPTIONS - DIM - UNV - OW - OF - CS - TRIM OPTIONS - N - F1

HOUSING TRIM MOUNT

HOUSING

SERIES	LUMENS ⁽¹⁾	COLOR	OPTIONS	CONTROL ⁽²⁾	VOLTAGE
4AR	L11 1,100lm L16 1,600lm	8TW Tunable white (80 CRI, 2700K-5000K)	EM/7W 7-watt emergency battery ⁽³⁾ EM/10W 10-watt emergency battery ⁽⁴⁾ EM/10W/RTS 10-watt emergency battery with regressed test switch ⁽⁵⁾ ATH Airtight construction ⁽⁶⁾ CP Chicago plenum (CCEA) ⁽⁷⁾ F Fuse kit	DALI Driver prewired for DALI applications DIM Dimming driver with (1) 0-10V signal to control dimming and (1) 0-10V signal to control CCT DMX Driver prewired for DMX applications PSQ Lutron T-Series 2-channel tunable white 1%. ⁽⁸⁾	UNV 120-277V

TRIM ⁽⁹⁾

TRIM TYPE	DISTRIBUTION ⁽¹⁰⁾	FLANGE TYPE	REFLECTOR FINISH	TRIM OPTIONS
O Open reflector	W Wide	OF 1/2" standard flange	Open trim types	MWT Textured white trim flange ⁽¹³⁾
L Flush lens	45° Open	SF 1/4" mud-in flange ⁽¹²⁾	CS Clear semi-specular anodize	AD Diffuse acrylic lens ⁽¹⁴⁾
A Angled lens	30° Angled		WH White texture powder coat	PD Diffuse 1/8" polycarbonate lens ⁽¹⁵⁾
	30° Flush		BL Black texture powder coat	WET/CC Wet location, covered ceiling listed ⁽¹⁶⁾
	M Medium		Lens trim types	AM Anti-microbial ⁽¹⁷⁾
	30° Open		CS Clear semi-specular powder coat	
	30° Flush		WH White texture powder coat	
	25° Angled		BL Black texture powder coat	
	N Narrow ⁽¹¹⁾			
	25° Flush			
	25° Angled			

MOUNTING

MOUNTING TYPE ⁽¹⁸⁾	MOUNTING HARDWARE ⁽¹⁹⁾
N Open pan for new construction	F1 Factory-installed 2-position fixed pan bracket, universal bar hanger included ⁽²¹⁾
I IC-rated enclosure for new construction	BA1 Adjustable butterfly pan bracket, bar hanger not included ⁽²²⁾
R Remodel kit ⁽²⁰⁾	CA1 Adjustable caterpillar pan bracket, universal bar hanger included ⁽²³⁾

NOTES

¹ Lumen output based on O trim type, M distribution and CS finish, 4000K/80CRI. Actual lumens may vary +/-5%, see page 2 for FIXTURE PERFORMANCE DATA.
² See page 3 for CONTROL DETAILS.
³ N and R Mounting Types only. Not available with ATH option.
⁴ N and R Mounting Types only. Not available with ATH option.
⁵ Not available with WET/CC or ATH options. N and R Mounting Types only. See page 4 for EM/10W/RTS DETAILS.
⁶ I Mounting Type required.
⁷ I Mounting Type required.
⁸ Not available with I Mounting Type.
⁹ Trim ships separately.
¹⁰ Beam angle based on CS or WH reflector finish.
¹¹ L and A Trim Types only.
¹² For use with mud-in plaster construction only, supplied with mud flange installation kit. See page 3 for FLANGE TYPE DETAILS. Not available with ATH option.

¹³ Not available with WH Reflector Finish or L Trim Type.
¹⁴ L and A Trim Types only. W distribution only.
¹⁵ L and A Trim Types only. W distribution only.
¹⁶ L Trim Type only. Not available with PD trim option.
¹⁷ WH and BL Reflector Finishes only.
¹⁸ Mounting hardware required (N and I only), ordered separately, see MOUNTING HARDWARE ordering info. See page 4 for MOUNTING TYPE DETAILS.
¹⁹ Additional mounting hardware options available. See page 5 for MOUNTING HARDWARE DETAILS.
²⁰ Also used in new construction sheet rock ceilings. Pan-less installation.
²¹ N and I Mounting Types only. Universal bar hanger ships uninstalled. I Mounting requires external brackets.
²² N Mounting Type only.
²³ N Mounting Type only.



4AR tunable WHITE

4.5" Adjustable Downlight – Round

FEATURES

- Tunable white from 2700K to 5000K CCT, minimum 80 CRI
- Adjustable aim with 0° - 45° tilt and 360° rotation
- Beam angles ranging from 25° narrow to 45° wide for tailored performance
- 4 inch aperture is unobtrusive in small scale spaces
- New construction mounting pan, IC-rated, or pan-less remodel kit available
- Contemporary design provides glare-free illumination for a soft ceiling appearance
- Choice of open reflector or die-cast lensed trims to complement interior style
- Etched degree markers and directional indicator make it simple to fine-tune the illumination angle
- Spring clip retention system eliminates trim sag
- Fully room-side accessible

SPECIFICATIONS

- HOUSING** – Die-cast aluminum spun and stamped articulating mechanism with forged aluminum heat sink. Galvanized steel splice compartment with driver mounting plate/enclosure. Mounting clips allow for ceiling thickness from 1/2" - 7/8".
- OPEN REFLECTOR** – Low-iridescent anodized aluminum. Clear semi-specular finish standard.
- LENSED TRIM** – Die-cast aluminum frame with micro-prismatic, acrylic lens.
- ELECTRICAL** – High-performance Class 2 LED array. Modular quick-connect plug for easy field-connection of LED light assembly to driver. Reported L70>50,000 hours. Tunable White products use LEDs of multiple CCTs and may produce a perceptibly different shade of white from single-CCT products at the same CCT. All CCTs are within 3 MacAdam ellipses.
- MOUNTING** – Recessed. 20 ga. galvanized steel mounting pan for new construction or IC-rated enclosure. Remodel kit option includes receiver bracket hardware. N and R mounting types for use in non-fire rated installations only.

- LISTINGS** –
 - cCSAus conforms to UL STD 1598; Certified to CAN/CSA STD C22.2 No. 250.0 for dry and damp locations. LED light assembly conforms to UL 2108 for remote installation.
 - Suitable for wet location under covered ceiling when specified with WET/CC option.
 - IC-rated for direct contact with insulation when specified with I Mounting Type.
 - City of Chicago Environmental Air approved when specified with CP option.
 - Complies with ASTM-E283 when specified with ATH option.
 - RoHS compliant.
- WARRANTY** – 5-year limited warranty, see hew.com/warranty.

FIXTURE PERFORMANCE DATA

OPEN REFLECTOR TRIM TYPE

	DISTRIBUTION	DELIVERED LUMENS	WATTAGE	EFFICACY (lm/W)
L11	W	713	14.6	49.0
	M	990	14.6	68.0
	N	-	-	-
L16	W	1231	24.0	51.2
	M	1652	24.0	68.7
	N	-	-	-

FLUSH LENS TRIM TYPE

	DISTRIBUTION	DELIVERED LUMENS	WATTAGE	EFFICACY (lm/W)
L11	W	710	14.6	45.8
	M	960	14.6	61.2
	N	965	14.6	66.1
L16	W	1266	24.0	46.8
	M	1650	24.0	61.8
	N	1643	24.0	66.3

- Photometrics tested in accordance with IESNA LM-79. Results shown are based on 25°C ambient temperature.
- Wattage shown is based on 120V input.
- Results based on 4000K, 80 CRI, 0° tilt, actual lumens may vary +/-5%
- Use multiplier tables to calculate additional options.

ANGLED LENS TRIM TYPE

	DISTRIBUTION	DELIVERED LUMENS	WATTAGE	EFFICACY (lm/W)
L11	W	506	14.6	36.6
	M	741	14.6	50.9
	N	900	14.6	62.2
L16	W	923	24.0	37.3
	M	1261	24.0	55.1
	N	1416	24.0	59.6

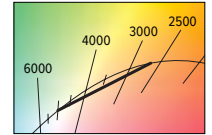
MULTIPLIER TABLES

COLOR TEMPERATURE		
CCT	LUMENS	WATTS
2700K	0.83	1.03
3000K	1.00	1.00
3500K	0.99	0.99
4000K	1.00	1.00
5000K	0.98	1.03

OPEN REFLECTOR FINISH	
CATALOG NUMBER	CONVERSION FACTOR
CS	1.00
WH	0.89
BL	0.79

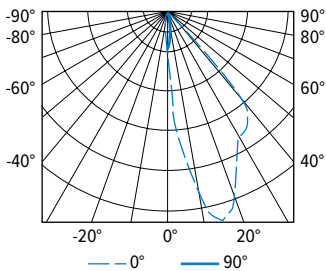
TRIM	
CATALOG NUMBER	CONVERSION FACTOR
AD ¹	0.85
PD ¹	0.85

¹ Distribution will also be affected, consult factory.



PHOTOMETRY

4AR-L11/8TW-DIM-UNV-OW-OF-CS (25° tilt) Total Luminaire Output: 778 lumens; 14.6 Watts | Efficacy: 53.3 lm/W | 80 CRI; 4037K CCT



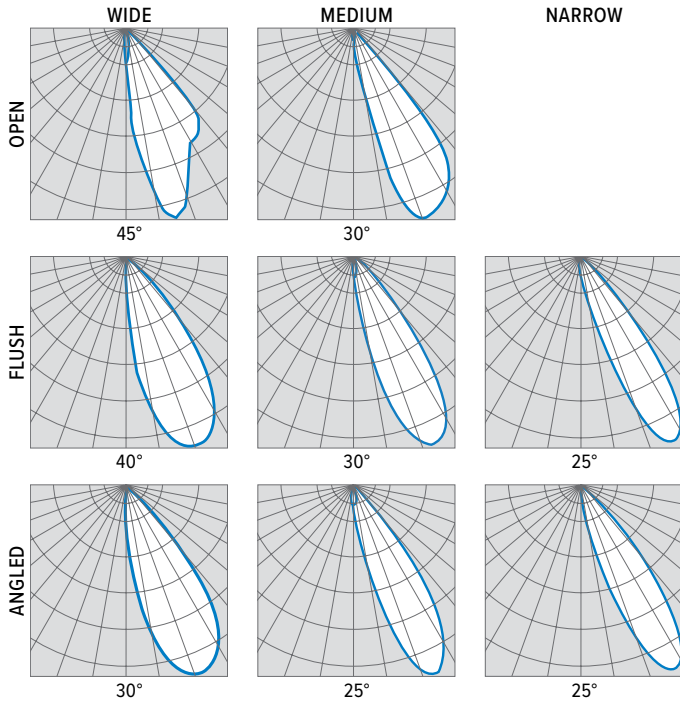
VERTICAL ANGLE	HORIZONTAL ANGLE					ZONAL LUMENS
	0°	45°	90°	135°	180°	
0	452	452	452	452	452	
5	1372	962	375	155	112	56
15	2482	1356	145	35	23	183
25	1869	1235	37	10	8	244
35	1618	569	7	4	6	229
45	334	17	3	2	2	64
55	3	0	0	0	2	1
65	1	0	0	0	0	0
75	0	0	0	0	0	0
85	0	0	0	0	0	0
90	0	0	0	0	0	0

LUMEN SUMMARY	LUMENS		% FIXTURE
	ZONE	LUMENS	
0 - 40	483	62	
0 - 60	712	91	
0 - 90	778	100	
0 - 180	778	100	

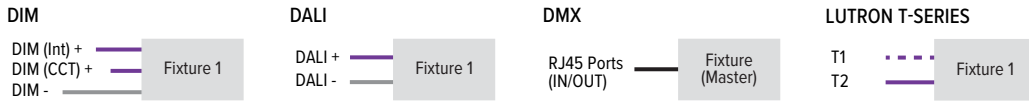


4AR tunable WHITE

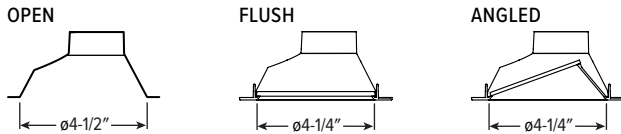
4.5" Adjustable Downlight – Round



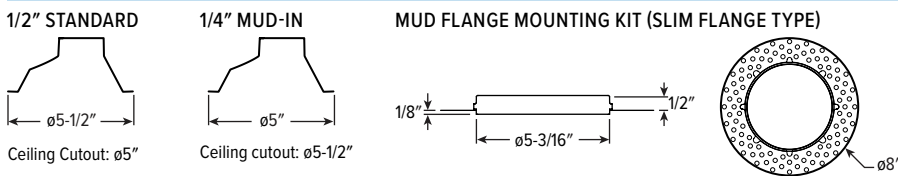
CONTROL DETAILS



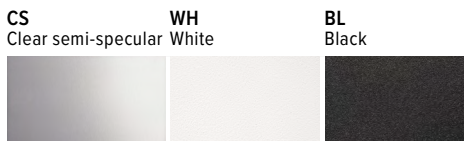
TRIM TYPE DETAILS



FLANGE TYPE DETAILS



REFLECTOR FINISH DETAILS

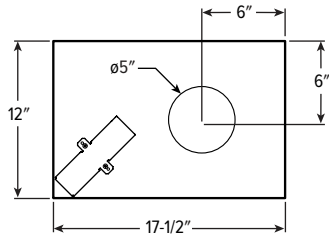


4AR tunable WHITE

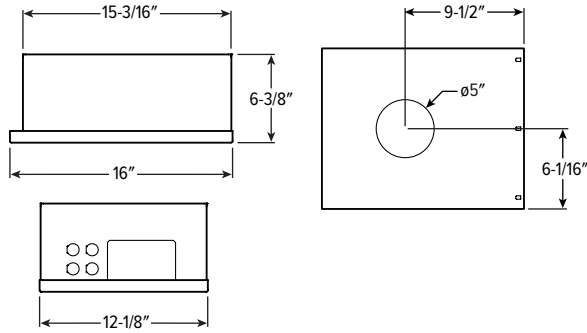
4.5" Adjustable Downlight – Round

MOUNTING TYPE DETAILS

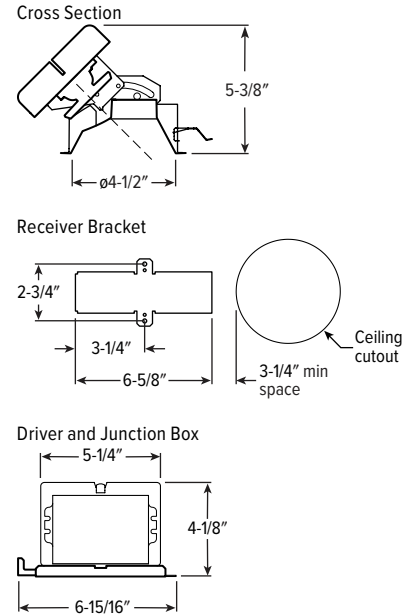
NEW CONSTRUCTION



IC-RATED



REMODEL

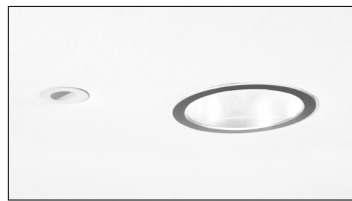


APERTURE ADAPTOR ORDERING INFO

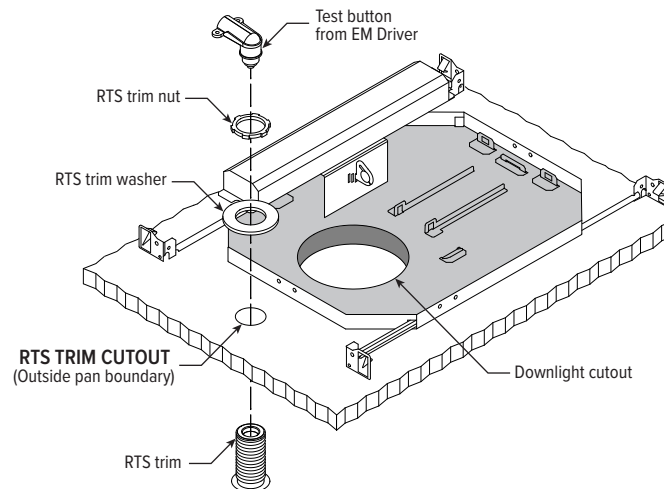
ORDERING EXAMPLE: 4DR - GR - 0575 - WHT			
SERIES	CATALOG NUMBER	CEILING CUTOUT	FINISH
4AR	6AR	GR	CS Clear semi-specular powder coat WH White texture powder coat BL Black texture powder coat
4DR	6DR		
4DS	6DS		
4PR	6PR		
4PS	6PS		
	8DR	See Kit Components for application limits.	

Additional finishes available, consult factory. For use with remodel downlights. For limitations and instructions, see hew.com/aperture-adaptor.pdf

EM/10W/RTS DETAILS



Shown Installed

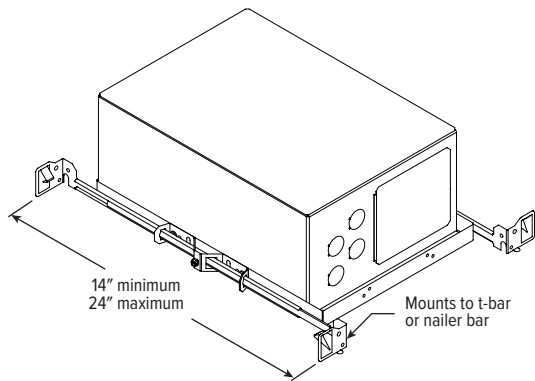
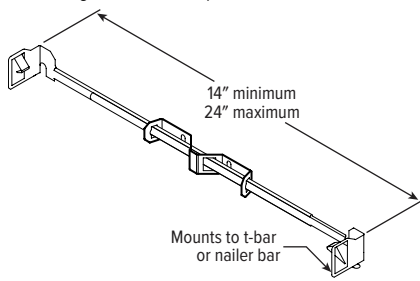


4AR tunable WHITE

4.5" Adjustable Downlight – Round

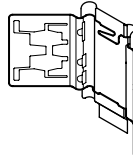
MOUNTING HARDWARE DETAILS

F1 Factory-installed 2-position fixed pan bracket, universal bar hanger included, ships uninstalled

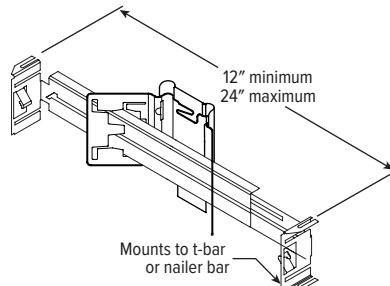


F1 with I Mounting Type

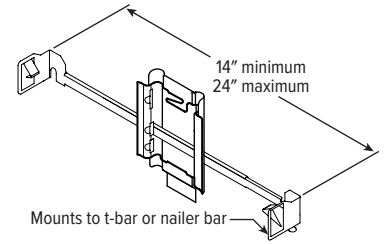
BA1 Adjustable butterfly pan bracket, bar hanger not included (N Mounting Type only)



BA2 Adjustable butterfly pan bracket, heavy-duty universal bar hanger included (N Mounting Type only)



CA1 Adjustable caterpillar pan bracket, universal bar hanger included (N Mounting Type only)



CA2 Adjustable caterpillar pan bracket, t-bar hanger included (N Mounting Type only)

