

CATALOG #: _____

TYPE: _____

PROJECT: _____



HOUSING

SERIES	HEIGHT	LUMEN PACKAGE (Example: L12/835U/L9/835D)	OPTIONS	HOUSING FINISH ^[1]
4CRDI	17 17"	Specify lumen packages: U for Up and D for Down LUMENS ^[4] CRI CCT U OR D L9 900lm 8 80 27 2700K U Uplight L12 1,200lm 9 90 30 3000K D Downlight L15 1,500lm 35 3500K L20 2,000lm 40 4000K 50 5000K	EM/10WRM/RTS Remote mount 10-watt emergency battery with regressed test switch ^[2] RDB Remote mount control/driver box, galvanized steel ^[3]	ALUM Silver sparkle aluminum BLK Textured black BRZ Textured bronze NKL Textured nickel SLV Textured silver WHT Textured white

CONTROL	DRIVER	VOLTAGE
See page 3 for ADDITIONAL CONTROL/ DRIVER OPTIONS.	See page 3 for ADDITIONAL CONTROL/ DRIVER OPTIONS.	UNV 120-277V 347 347V ^[8]
– None	DIM Entire fixture switches and dims together	
AVI-LVFA Avl-on wireless fixture control ^[5]	DIM1 1% Dimming driver, 0-10V	
AWNRR Lutron Athena wireless node fixture control. RF only ^[6]	DA Driver with 12V auxiliary power, without external dimming wires ^[7]	

TRIM

TRIM TYPE AND DISTRIBUTION		REFLECTOR FINISH ^[9]		TRIM OPTIONS			
(Example Uplight/Downlight: OW/LM)		Downlight Open Trim Types		Downlight Lens Trim Types		AD Diffuse acrylic lens ^[10]	
TRIM TYPE	DISTRIBUTION	CS	Clear semi-specular anodize	CS	Clear semi-specular powder coat	PD Diffuse 1/8" polycarbonate lens ^[11]	
Uplight	See page 2 for BEAM ANGLE.	SG	Satin-glow anodize	WH	White texture powder coat		
O Open reflector with clear glass shield ^[12]		GD	Gold anodize	BL	Black texture powder coat		
	Uplight	CG	Champagne gold anodize	BZ	Bronze texture powder coat		
Downlight	W Wide	PW	Pewter anodize	NK	Nickel texture powder coat		
O Open reflector	M Medium	SPC	Clear specular anodize	SV	Silver texture powder coat		
F Open reflector with frosted top diffuser	N Narrow	RG	Rose gold anodize	AL	Silver sparkle aluminum		
L Flush lens	S Narrow spot ^[13]	WH	White texture powder coat				
R Regressed lens	Downlight	BL	Black texture powder coat				
	W Wide						
	M Medium						
	N Narrow						
	S Narrow spot ^[14]						

MOUNTING

MOUNTING TYPE ^[15]

WM Wall mount

NOTES

- 1 See page 4 for HOUSING FINISH DETAILS.
2 Max remote distance 50', including suspension length. Large remote box provided.
EM light defaults to downlight output. Specify CEC in option code when California
Energy Commission regulations are required. See page 3 for EMERGENCY BATTERY
DETAILS.
3 Painted driver box available, specify RDB/BLK or RDB/WHT.
4 Lumen output based on O Trim Type, W Distribution and CS Reflector Finish, 80 CRI/3500K
CCT. Actual performance may vary +/-5%. See page 2 for FIXTURE PERFORMANCE DATA.
5 DA Driver only. Installed in remote box, must specify RDB Option. See page 5 for AVI-ON
BLUETOOTH WIRELESS CONTROL DETAILS.
6 DA Driver only. Installed in remote box, must specify RDB Option.
7 Avi-on and Lutron Athena Controls only.
8 Not available with EM batteries or DA drivers.
9 Specified for Downlight Trim Type only. See page 4 for REFLECTOR FINISH DETAILS.
10 Not available with O or F Trim Types. Downlight only. W Distribution only.
11 Not available with O or F Trim Types. Downlight only. W Distribution only.
12 CS Reflector Finish standard. Other colors available, consult factory.
13 Not available with L20 lumen package or 950 CRI/CCT.
14 Not available with L20 lumen package or 950 CRI/CCT.
15 See page 4 for FIXTURE DETAILS.

- 6 DA Driver only. Installed in remote box, must specify RDB Option.
7 Avi-on and Lutron Athena Controls only.
8 Not available with EM batteries or DA drivers.
9 Specified for Downlight Trim Type only. See page 4 for REFLECTOR
10 Not available with O or F Trim Types. Downlight only. W Distributi
11 Not available with O or F Trim Types. Downlight only. W Distributi
12 CS Reflector Finish standard. Other colors available, consult fact
13 Not available with L20 lumen package or 950 CRI/CCT.
14 Not available with L20 lumen package or 950 CRI/CCT.
15 See page 4 for FIXTURE DETAILS.

4CRDI^{LED} 4" Direct/Indirect Cylinder – Round

FEATURES

- Slim profile for unobtrusive illumination
- Smoothly accent walls and eliminate dark ceilings with direct and indirect lighting
- Parallel the performance and style of the Williams downlight collection
- Superior optical control with beams as narrow as 8° and field changeable optics as wide as 70°
- Complement the architectural elements of any space with a multitude of housing and trim finishes
- Precision-engineered extruded aluminum housing and die-cast aluminum trim face for clean aesthetic
- Low UGR meets LEED and WELL requirements
- Wireless in-fixture control solutions available
- Made Right Here® in the USA

SPECIFICATIONS

- HOUSING** – Extruded aluminum with die-cast aluminum accent ring.
- FINISH** – Polyester powder coat bonded to phosphate-free, multi-stage pretreated metal. All parts painted after fabrication to facilitate installation, increase efficiency, and inhibit corrosion.
- OPEN REFLECTOR** – Low-iridescent anodized aluminum. Clear semi-specular finish standard.
- LENSED TRIM** – Die-cast aluminum frame with micro-prismatic, acrylic lens.
- ELECTRICAL** – High-performance Class 2 C.O.B. LED array. Modular quick-connect plug for easy field-connection of LED light assembly to driver. Reported L70>55,000 hours. Reported L90 = 49,000 hours. Estimated L70 = 179,000 hours.
- MOUNTING** – Wall mount. Indoor applications only. Max weight 5-1/2 lbs.
- LISTINGS** –
 - cCSAus conforms to UL STD 1598 and UL STD 8750. Certified to CAN/CSA STD C22.2 No. 250.0. Suitable for dry and damp locations.
 - Build America, Buy America (BABA) and Buy American Act (BAA) compliant. Request certification at hew.com/buy-american
- WARRANTY** – 5-year limited warranty, see hew.com/warranty

FIXTURE PERFORMANCE DATA

		DOWNLIGHT							UPLIGHT			
		WATTAGE	OPEN REFLECTOR		FLUSH LENS		REGRESSED LENS		WATTAGE	OPEN REFLECTOR		
			DELIVERED LUMENS	EFFICACY (lm/W)	DELIVERED LUMENS	EFFICACY (lm/W)	DELIVERED LUMENS	EFFICACY (lm/W)		DELIVERED LUMENS	EFFICACY (lm/W)	
L9	DIST.	W	10.7	929	87	973	91	963	90	10.6	760	72
		M	10.7	898	84	958	90	917	86	10.6	734	69
		N	10.7	799	75	950	89	927	87	10.6	653	62
		S	14.1	807	57	1115	79	1075	76	14.0	660	47
L12		W	14.3	1267	89	1327	93	1313	92	14.2	1036	73
		M	14.3	1224	86	1307	91	1250	87	14.2	1001	70
		N	14.3	1000	70	1296	91	1264	88	14.2	818	58
		S	20.4	1071	53	1480	73	1427	70	20.2	876	43
L15		W	17.7	1571	89	1645	93	1628	92	17.5	1285	73
		M	17.7	1518	86	1620	92	1550	88	17.5	1241	71
		N	17.7	1240	70	1607	91	1567	89	17.5	1014	58
		S	26.7	1326	50	1832	69	1767	66	26.5	1084	41
L20		W	23.4	1999	85	2160	92	2138	91	23.2	1687	73
		M	23.4	1931	83	2127	91	2035	87	23.2	1630	70
		N	23.4	1578	67	2110	90	2058	88	23.2	1332	57
		S	—	—	—	—	—	—	—	—	—	—

- Photometrics tested in accordance with IESNA LM-79. Results based on CS (O Trim Type) or WH (L and R Trim Types) Reflector Finish, W Distribution, 80 CRI/3500K CCT, average wattage for 120V input, and 25°C ambient temperature. Actual performance may vary +/-5%.
- Wattage is for downlight or uplight components. Add wattages together for selected lumen packages to find total fixture wattage.
- To calculate lumen output in emergency mode, multiply the battery wattage by the efficacy.
- Use multiplier tables to calculate additional options.

MULTIPLIER TABLES

	COLOR TEMPERATURE	
	CCT	CONVERSION FACTOR
80 CRI	2700K	0.92
	3000K	0.98
	3500K	1.00
	4000K	1.01
	5000K	1.02

90 CRI	CCT	CONVERSION FACTOR
	2700K	0.76
	3000K	0.79
	3500K	0.82
	4000K	0.84
	5000K	0.88

TRIM OPTIONS	
CATALOG NUMBER	CONVERSION FACTOR
F	0.67
AD	0.85
PD	0.85

	REFLECTOR FINISH	
	CATALOG NUMBER	CONVERSION FACTOR
O TRIM	CS	1.00
	SG ⁽¹⁾	0.92
	GD	0.93
	CG	0.96
	PW	0.86
	SPC	1.02
R TRIM	RG	0.88
	WH ⁽¹⁾	0.89
	BL ⁽¹⁾	0.47
	WH	1.00
	CS ⁽¹⁾	0.98

R TRIM	CATALOG NUMBER	CONVERSION FACTOR
	BL ⁽¹⁾	0.79
	BZ ⁽¹⁾	0.76
	NK ⁽¹⁾	0.81
	SV ⁽¹⁾	0.81
	AL ⁽¹⁾	0.86

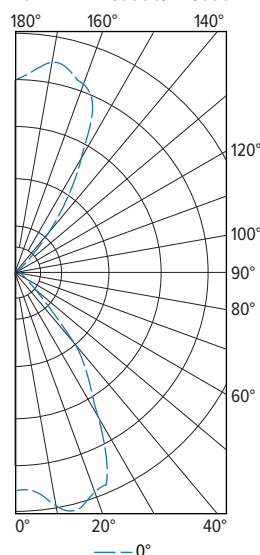
BEAM ANGLE

	TRIM TYPE ⁽²⁾			
	O	F	L	R
W	70°		50°	55°
M	40°	Consult Factory	30°	30°
N	15°		20°	20°
S	8°		14°	14°

- Distribution will also be affected, consult factory.
- Beam angle based on CS Reflector Finish.

PHOTOMETRY

4CRDI-17-L12/835U/L12/835D-WHT-DIM1-UNV-OW/OW-CS-WM Total Luminaire Output: 2228 lumens; 28.5 Watts | Efficacy: 78 lm/W | 80 CRI; 3500K CCT



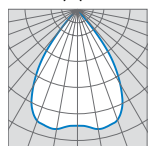
	VERTICAL ANGLE	HORIZONTAL ANGLE	ZONAL LUMENS
		0°	
CANDLEPOWER DISTRIBUTION	0	948	
	5	959	95
	15	1059	295
	25	917	406
	35	514	306
	45	72	77
	55	19	18
	65	6	7
	75	3	3
	85	2	2
	90	2	
	95	3	3
	105	6	6
	115	13	13
	125	30	28
	135	77	70
	145	370	227
	155	773	339
	165	883	249
	175	867	84
	180	826	

	ZONE	LUMENS	% FIXTURE
LUMEN SUMMARY	0 - 30	796	36
	0 - 40	1102	49
	0 - 60	1196	54
	0 - 90	1208	54
	90 - 120	23	1
	90 - 150	347	16
	90 - 180	1020	46
	0 - 180	2228	100

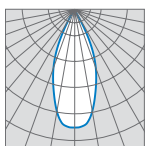


4CRDI^{LED} 4" Direct/Indirect Cylinder – Round

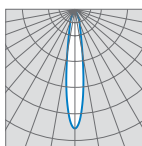
OPEN (O)



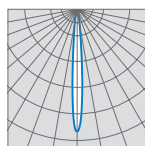
70° Wide



40° Medium

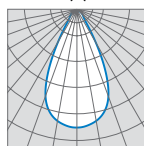


15° Narrow

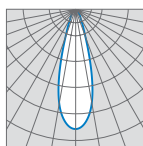


8° Spot

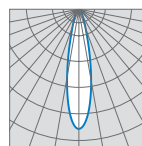
FLUSH (L)



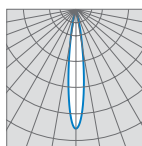
50° Wide



30° Medium

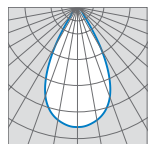


20° Narrow

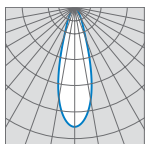


14° Spot

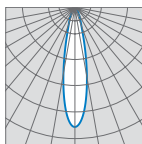
REGRESSED (R)



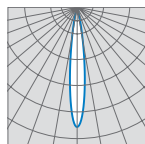
55° Wide



30° Medium



20° Narrow



14° Spot

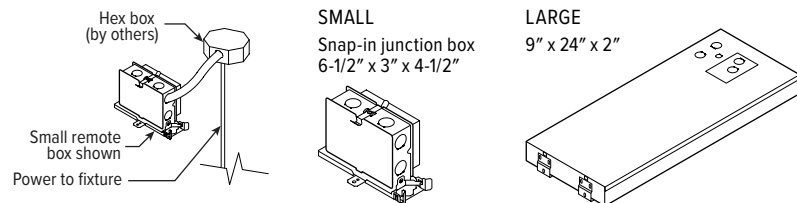
ADDITIONAL CONTROL/DRIVER OPTIONS

CONTROL/DRIVER	DESCRIPTION	RDB DETAILS BY LUMEN STOP ^[1]				
		L9	L12	L15	L20	w/EM
DIM	Dimming driver prewired for 0-10V low voltage applications; entire fixture switches and dims together	OIS	OIS	OIS	OIS	RIL
DIMU/DIMD	Dimming driver prewired for 0-10V low voltage applications; up and down portions switch and dim separately	OIS	OIS	OIS	OIS	RIL
DIM1	1% dimming driver prewired for 0-10V low voltage applications	OIS	OIS	OIS	OIS	RIL
DIM1U/DIM1D	1% dimming driver prewired for 0-10V low voltage applications; up and down portions switch separately	OIS	OIS	OIS	OIS	RIL
DIM LINE	Line voltage dimming driver (TRIAC and ELV compatible, 120V only)	OIS	OIS	OIS	OIS	RIL
DIM LINEU/DIM LINED	Line voltage switching and line voltage dimming; up and down portions switch separately	OIS	OIS	OIS	OIS	RIL
DMX	0.1% dimming driver for DMX controls	RIL	RIL	RIL	RIL	RIL
DMX/DMX	0.1% dimming driver for DMX controls; up and down portions switch separately	RIL	RIL	RIL	RIL	RIL
DALI	DALI dimming driver	RIL	RIL	RIL	RIL	RIL
DALI/DALI	DALI dimming driver; up and down portions switch separately	RIL	RIL	RIL	RIL	RIL
LDE1	Lutron Hi-lume 1% EcoSystem dimming LED driver	RIL	RIL	RIL	RIL	RIL
LDE1/LDE1	Lutron Hi-lume 1% EcoSystem dimming LED driver; up and down portions switch separately	RIL	RIL	RIL	RIL	RIL
AVI-LVFA/DA	Avi-on wireless fixture control for use with driver with 12V auxiliary power. Up and down switch together.	RIL	RIL	RIL	RIL	RIL
AVI-LVFA/DA-U/D	Avi-on wireless fixture control for use with driver with 12V auxiliary power. Up and down switch separately.	RIL	RIL	RIL	RIL	RIL
AWNDR/DA	Lutron Athena wireless node fixture control, RF only, for use with driver with 12V auxiliary power. Up and down switch together.	RIS	RIS	RIS	RIS	RIL
AWNDR/DA-U/D	Lutron Athena wireless node fixture control, RF only, for use with driver with 12V auxiliary power. Up and down switch separately.	RIS	RIS	RIS	RIS	RIL

¹ If using two different stops for U/D, see highest lumen stop for RDB.

REMOTE MOUNT DETAILS

Max remote distance is 50', connection by others. Must be room-side accessible for maintenance.



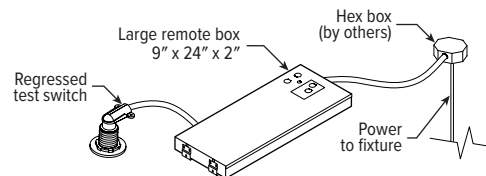
REMOTE MOUNT KEY	
RIS	RDB Required, Small Box
OIS	RDB Optional, Small Box
RIL	RDB Required, Large box

EMERGENCY BATTERY DETAILS



Regressed test switch
Ø1-3/4"

Max remote distance is 50' including suspension length, connection by others.



H.E. Williams, Inc.

Carthage, Missouri

www.hew.com

417-358-4065

Designed and Manufactured in the USA

Information contained herein is subject to change without notice.

REV.01/10/25.JL

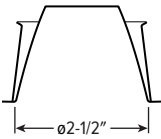
Cylinders
Page 3 of 5

4CRDI^{LED} 4" Direct/Indirect Cylinder – Round

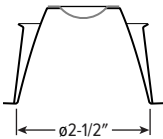
TRIM TYPE DETAILS

DOWNLIGHT

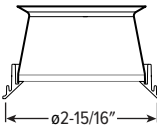
OPEN



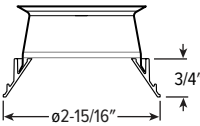
OPEN TOP DIFFUSER



FLUSH

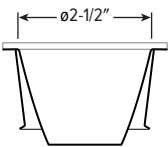


REGRESSED



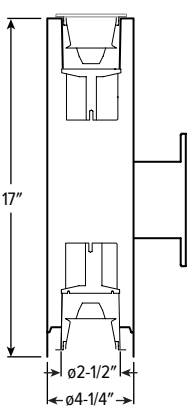
UPLIGHT

OPEN

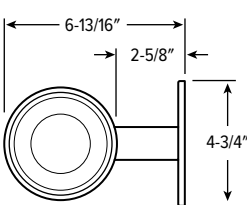


FIXTURE DETAILS

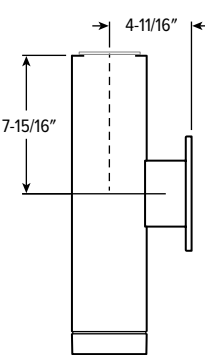
CROSS SECTION



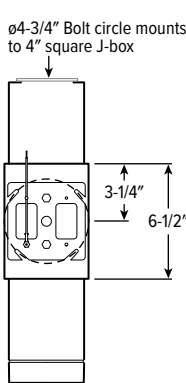
TOP VIEW



SIDE VIEW

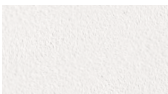


BACK VIEW



HOUSING FINISH DETAILS

WHITE



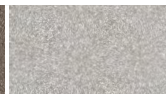
BLACK



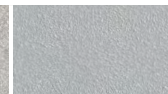
BRONZE



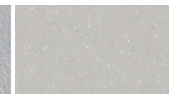
NICKEL



SILVER



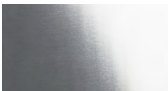
ALUM



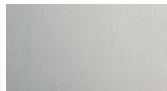
For custom color, please specify RAL code or a manufacturer code with description. All custom colors other than RAL require two sample swatches, minimum 1" square.

REFLECTOR FINISH DETAILS

Smooth Finish SPC



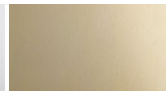
SG



PW



GD



CG



RG



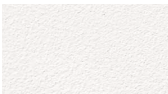
CS



AL



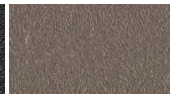
Textured Finish WH



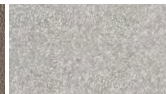
BL



BZ



NK



SV



SEE NEXT PAGE FOR CONTROL DETAILS



4CRDI^{LED} 4" Direct/Indirect Cylinder – Round

AVI-ON BLUETOOTH WIRELESS CONTROL DETAILS

FEATURES

Simple

- Gateway-free distributed control
- Contractor friendly installation
- Occupancy/vacancy/daylight sensing

Scalable

- Virtually unlimited network size
- Spans small offices to large warehouses
- Flexible control strategies

Secure

- Optional cloud connectivity
- UL IoT platinum security rating
- DLC 5.0 compliant

COMMISSIONING & INSTALLATION TOOLS

Avi-on mobile apps provide intuitive, quick installation and commissioning. Pro tools are available to qualified installers. Live commissioning training and on-site or remote support by Avi-on must be ordered separately through Avi-on.



Commissioning
Mobile App

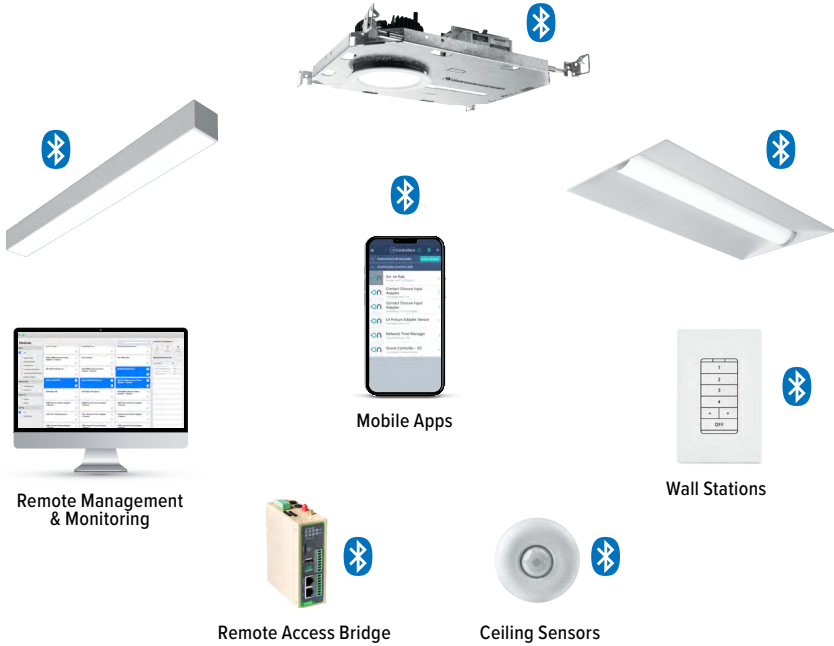


Zone Scanner
Web App



Commissioning
Pro App

SYSTEM COMPONENTS



The Bluetooth® word mark and logos are registered trademarks owned by Bluetooth SIG, Inc. and any use of such marks by Avi-on is under license. Other trademarks and trade names are those of their respective owners.

ACCESSORIES

WALL STATIONS	
AVI-B-2401AC-1	Scene controller - buttons numbered 1-4 and up/down/off, 120-277VAC
AVI-B-2402BAT-1	Scene controller - buttons numbered 1-4 and up/down/off, battery powered
AVI-B-2401AC-2	Dimmer with presets - buttons with percentages and up/down/off, 120-277VAC
AVI-B-2402BAT-2	Dimmer with presets - buttons with percentages and up/down/off, battery powered
AVI-B-2401AC-3	Two button control on/off or hold to dim up/down, 120-277VAC
AVI-B-2402BAT-3	Two button control on/off or hold to dim up/down, battery powered

NETWORK	
AVI-RAB-LTE	Remote access bridge
AVI-NTM	Network time manager with battery backup
CEILING MOUNT SENSORS	
AVI-KIT-SEN-DUCM	PIR motion and ultrasonic sensor kit
AVI-KIT-SEN-ICM	PIR motion and photocell sensor kit

For load controllers and additional accessory info, see hew.com/avi-on

