

CATALOG #: \_\_\_\_\_

TYPE: \_\_\_\_\_

PROJECT: \_\_\_\_\_



## HOUSING

– TRIM –

MOUNT

SERIES	LUMENS <sup>[1]</sup>	CRI	CCT	OPTIONS	HOUSING FINISH <sup>[2]</sup>	CONTROL	DRIVER	VOLTAGE
<b>4CR</b>	<b>L5</b> 500lm	<b>8</b> 80	<b>27</b> 2700K	<i>See page 4 for EMERGENCY BATTERY OPTIONS.</i>	<b>ALUM</b> Silver sparkle aluminum	<i>See page 5 for ADDITIONAL CONTROL/ DRIVER OPTIONS.</i>	<i>See page 5 for ADDITIONAL CONTROL/ DRIVER OPTIONS.</i>	<b>UNV</b> 120-277V <b>347</b> 347V <sup>[8]</sup>
	<b>L7</b> 700lm	<b>9</b> 90 <sup>[3]</sup>	<b>30</b> 3000K		<b>BLK</b> Textured black			
	<b>L9</b> 900lm		<b>35</b> 3500K		<b>BRZ</b> Textured bronze			
	<b>L12</b> 1,200lm		<b>40</b> 4000K	<b>RDB</b> Remote mount control/driver box, painted black <sup>[4]</sup>	<b>NKL</b> Textured nickel	- None	<b>DIM</b> Dimming driver, 0-10V	
	<b>L15</b> 1,500lm		<b>50</b> 5000K		<b>SLV</b> Textured silver	<b>AVI-LVFA</b> Axi-on wireless fixture control <sup>[5]</sup>	<b>DIM1</b> 1% Dimming driver, 0-10V	
	<b>L20</b> 2,000lm				<b>WHT</b> Textured white	<b>AWNRR</b> Lutron Athena wireless node integral fixture control. RF only <sup>[6]</sup>	<b>DA</b> Driver with 12V auxiliary power, without external dimming wires <sup>[7]</sup>	
	<b>L25</b> 2,500lm							

TRIM TYPE	DISTRIBUTION <sup>[9]</sup>	REFLECTOR FINISH <sup>[10]</sup>	TRIM OPTIONS
O Open reflector	W 70° Wide	Open Trim Types	AD Diffuse acrylic lens <sup>[13]</sup>
L Flush lens	M 40° Medium	CS Clear semi-specular anodize	PD Diffuse 1/8" polycarbonate lens <sup>[14]</sup>
R Regressed lens	N 15° Narrow <sup>[11]</sup>	SG Satin-glow anodize	TD Diffuse polycarbonate lens media at top of open reflector <sup>[15]</sup>
	S 8° Narrow spot <sup>[12]</sup>	GD Gold anodize	
		CG Champagne gold anodize	
		PW Pewter anodize	
		SPC Clear specular anodize	
		RG Rose gold anodize	
		WH White texture powder coat	
		BL Black texture powder coat	
		Lens Trim Types	
		CS Clear semi-specular powder coat	
		WH White texture powder coat	
		BL Black texture powder coat	
		BZ Bronze texture powder coat	
		NK Nickel texture powder coat	
		SV Silver texture powder coat	
		AL Silver sparkle aluminum	

**MOUNTING TYPE** <sup>[16]</sup>

<b>CM</b> __	Adjustable aircraft cable mount, 24", 48", 96", or 144" only, must specify. Example: 24" cable = <b>CM24</b> <sup>[17]</sup>
<b>PM</b> __	Pendant mount. Example: 24" pendant = <b>PM24</b> <sup>[18]</sup>
<b>PC</b> __	Power cord mount. Example: 24" cord = <b>PC24</b> <sup>[19]</sup>
<b>SM</b>	TwistLock surface mount to octagonal J-box
<b>WM</b>	Wall mount

1 Lumen output based on O trim type, W distribution and CS finish, 3500K/80CRI. Actual  
lumens may vary +/-5%, see page 2 for FIXTURE PERFORMANCE DATA  
2 See page 3 for HOUSING FINISH DETAILS.  
3 Extended lead times may apply. Consult factory for availability.  
4 Painted white available, specify RDB/WHT.  
5 DA Driver only. See page 5 for AVI-ON BLUETOOTH WIRELESS CONTROL DETAILS.  
6 DA Driver only. PM and SM Mounting Types installed in remote box, must specify RDB  
Option.  
7 Avi-on and Lutron Athena Controls only.  
8 Not available with EM batteries, DA, or DMX drivers.  
9 Beam angle based on O Trim Type and CS Reflector Finish. Trim Type affects beam angle.  
See page 2 for FIXTURE PERFORMANCE DATA.  
10 See page 3 for REFLECTOR FINISH DETAILS.

<sup>11</sup> Not available with L25 lumen package when specified with L or R Trim Types.

<sup>12</sup> Not available with L20 or L25 lumen packages or 950 CRI/CCT.

<sup>13</sup> Not available with O Trim Type. W distribution only.

**14** Not available with O Trim Type. W distribution only.

<sup>15</sup> O Trim Type only.

16 See page 4 for M

<sup>17</sup> Canopy painted white unless specified.

CORD OPTIONS.

**18** Specify length in

Specify length in millimeters; minimum 6". Canopy and pendant must have nesting color unless specified otherwise.

<sup>19</sup> 48" and 96" lengths available. Call

48" and 50" lengths available. Canopy painted white unless specified otherwise. Must specify cord. See page 4 for CORD OPTIONS.

# 4CR<sup>LED</sup> 4" Cylinder – Round

## FEATURES

### TwistLock™

- Slim profile for unobtrusive illumination
- Parallel the performance and style of the Williams downlight collection
- Precision illumination with 8° narrow spot to 70° wide optics
- Complement the architectural elements of any space with a multitude of housing, trim and cord finishes
- Limitless application opportunities via pendant, cable, power cord, wall and ceiling mounts
- Ensure a simple and secure installation with TwistLock™ surface mount technology
- Wireless in-fixture control solutions available

## SPECIFICATIONS

- **HOUSING** – Extruded aluminum with die-cast aluminum accent ring.
- **FINISH** – Polyester powder coat bonded to phosphate-free, multi-stage pretreated metal. All parts painted after fabrication to facilitate installation, increase efficiency, and inhibit corrosion.
- **OPEN REFLECTOR** – Low-iridescent anodized aluminum. Clear semi-specular finish standard.
- **LENSED TRIM** – Die-cast aluminum frame with micro-prismatic, acrylic lens.
- **ELECTRICAL** – High-performance Class 2 C.O.B. LED array. Modular quick-connect plug for easy field-connection of LED light assembly to driver. Reported L70>55,000 hours. Reported L90 = 49,000 hours. Estimated L70 = 179,000 hours.
- **MOUNTING** – Surface, cable, pendant, power cord or wall mount. Indoor applications only. Max weight 5 lbs.
- **LISTINGS** –
  - cCSAus conforms to UL STD 1598 and UL STD 8750. Certified to CAN/CSA STD C22.2 No. 250.0. Suitable for dry and damp locations.
  - Complies with the Buy American Act and other federal regulations. Request certification at [hew.com/baa](http://hew.com/baa).
- **WARRANTY** – 5-year limited warranty, see [hew.com/warranty](http://hew.com/warranty).

## FIXTURE PERFORMANCE DATA

	DISTRIBUTION	WATTAGE	OPEN REFLECTOR TRIM TYPE		FLUSH LENS TRIM TYPE		REGRESSED LENS TRIM TYPE	
			DELIVERED LUMENS	EFFICACY (lm/W)	DELIVERED LUMENS	EFFICACY (lm/W)	DELIVERED LUMENS	EFFICACY (lm/W)
L5	W	6.7	516	77	540	81	535	80
	M	6.7	499	74	532	79	509	76
	N	6.7	407	61	528	79	515	77
	S	7.8	451	58	624	80	602	77
L7	W	8.7	725	83	759	87	751	86
	M	8.7	700	80	748	86	715	82
	N	8.7	572	66	742	85	723	83
	S	11.2	630	56	871	78	840	75
L9	W	10.7	929	87	973	91	963	90
	M	10.7	898	84	958	90	917	86
	N	10.7	799	75	950	89	927	87
	S	14.1	807	57	1115	79	1075	76
L12	W	14.3	1267	89	1327	93	1313	92
	M	14.3	1224	86	1307	91	1250	87
	N	14.3	1000	70	1296	91	1264	88
	S	20.4	1071	53	1480	73	1427	70
L15	W	17.7	1571	89	1645	93	1628	92
	M	17.7	1518	86	1620	92	1550	88
	N	17.7	1240	70	1607	91	1567	89
	S	26.7	1326	50	1832	69	1767	66
L20	W	23.9	2063	86	2160	90	2138	89
	M	23.9	1993	83	2127	89	2035	85
	N	23.9	1629	68	2110	88	2058	86
	S	–	–	–	–	–	–	–
L25	W	30.1	2479	82	2596	86	2569	85
	M	30.1	2395	80	2556	85	2446	81
	N	30.1	1957	65	–	–	–	–
	S	–	–	–	–	–	–	–

## MULTIPLIER TABLES

	COLOR TEMPERATURE	
	CCT	CONVERSION FACTOR
80 CRI	2700K	0.92
	3000K	0.98
	3500K	1.00
	4000K	1.01
	5000K	1.02

	TRIM OPTIONS	
	CATALOG NUMBER	CONVERSION FACTOR
	AD	0.85
	PD	0.85
	TD	0.67

	REFLECTOR FINISH	
	CATALOG NUMBER	CONVERSION FACTOR
O TRIM	CS	1.00
	SG <sup>(1)</sup>	0.92
	GD	0.93
	CG	0.96
	PW	0.86
	SPC	1.02
R TRIM	RG	0.88
	WH <sup>(1)</sup>	0.89
	BL <sup>(1)</sup>	0.47
	WH	1.00
	CS <sup>(1)</sup>	0.98
	BL <sup>(1)</sup>	0.79
R TRIM	BZ <sup>(1)</sup>	0.76
	NK <sup>(1)</sup>	0.81
	SV <sup>(1)</sup>	0.81
	AL <sup>(1)</sup>	0.86

<sup>1</sup> Distribution will also be affected, consult factory.

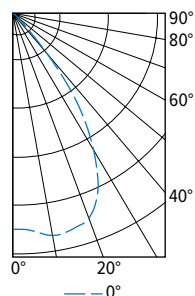
## BEAM ANGLE

	TRIM TYPE		
	OPEN	FLUSH	REGRESSED
W	70°	50°	55°
M	40°	30°	30°
N	15°	20°	20°
S	8°	14°	14°

- Photometrics tested in accordance with IESNA LM-79. Results shown are based on 25°C ambient temperature.
- Wattage shown is based on 120V input.
- Results based on 3500K/80CRI and CS (O Trim Type) or WH (L and R Trim Types) Reflector Finish. Actual lumens may vary +/-5%.
- To calculate lumen output in emergency mode, multiply the battery wattage by the efficacy.
- Use multiplier tables to calculate additional options.

## PHOTOMETRY

4CR-L25/835-DIM-UNV-OW-CS Total Luminaire Output: 2479 lumens; 30.1 Watts | Efficacy: 82.3 lm/W | 80 CRI; 3500K CCT



	VERTICAL ANGLE	HORIZONTAL ANGLE	ZONAL LUMENS
		0°	
CANDLEPOWER DISTRIBUTION	0	2011	
	5	2033	148
	15	2087	341
	25	1859	429
	35	1089	271
	45	150	39
	55	35	12
	65	12	4
	75	2	1
	85	0	0
	90	0	0

	LUMEN SUMMARY		
	ZONE	LUMENS	% FIXTURE
	0 - 40	2281	92
	0 - 60	2464	99
	0 - 90	2479	100
	0-180	2479	100



H.E. Williams, Inc.

Carthage, Missouri

[www.hew.com](http://www.hew.com)

417-358-4065

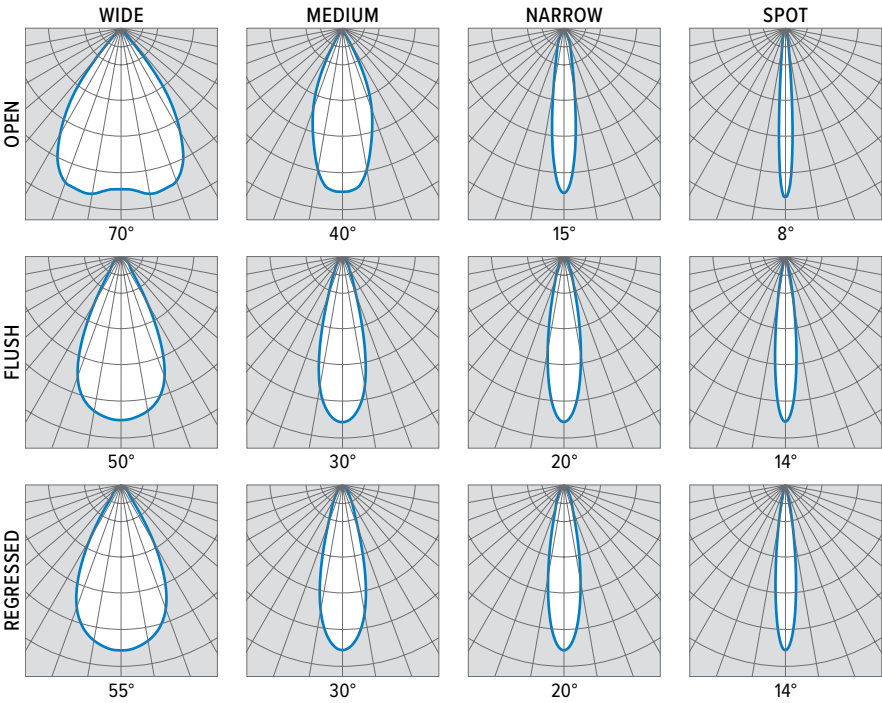
Designed and Manufactured in the USA

Information contained herein is subject to change without notice.

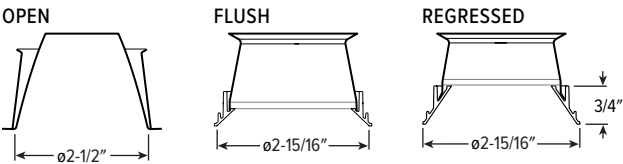
REV.09/19/23.LA

Cylinders  
Page 2 of 5

# 4CR<sup>LED</sup> 4" Cylinder – Round



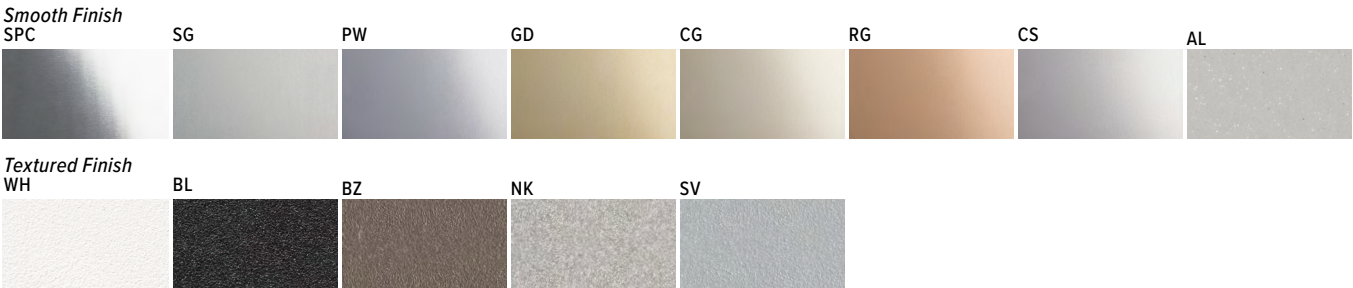
## TRIM TYPE DETAILS



## HOUSING FINISH DETAILS



## REFLECTOR FINISH DETAILS



# 4CR<sup>LED</sup> 4" Cylinder – Round

## EMERGENCY BATTERY OPTIONS

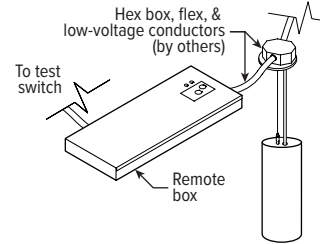
Max remote distance 50', including suspension length. Specify CEC in the option code when California Energy Commission regulations are required.

CATALOG NUMBER	DESCRIPTION
EM/7WRM	Remote mount 7-watt emergency battery
EM/7WRM/RTS	Remote mount 7-watt emergency battery with regressed test switch <sup>[1]</sup>
EM/10WRM	Remote mount 10-watt emergency battery
EM/10WRM/RTS	Remote mount 10-watt emergency battery with regressed test switch <sup>[1]</sup>
EM/12WRM	Remote mount 12-watt emergency battery <sup>[2]</sup>
EM/12WRM/RTS	Remote mount 12-watt emergency battery with regressed test switch <sup>[1]</sup> <sup>[2]</sup>

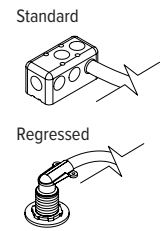
<sup>1</sup> For use in grid ceiling installations only.

<sup>2</sup> Not available when CEC regulations are required.

## RDB OPTION DETAILS



## TEST SWITCH DETAILS



## MOUNTING DETAILS

### PENDANT MOUNT (PM\_\_)



Swivel pendant mount fixtures are provided with:

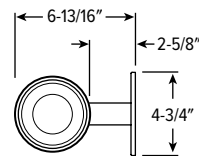
- 45° Swivel canopy
- 3/8" IPS Threaded stem
- Specify length of stem, 6" minimum, 24" default length

### WALL MOUNT (WM)

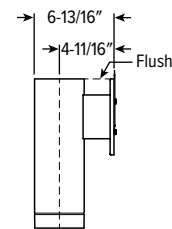


Mounts to 4" square J-box

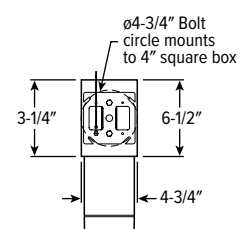
#### TOP VIEW



#### SIDE VIEW



#### BACK VIEW



### SURFACE MOUNT (SM)



**TwistLock™**  
Simple lift-and-twist mounting secures fixture to J-box.

### CABLE MOUNT (CM\_\_)



Cable mount fixtures are provided with:

- Adjustable length aircraft cable, must specify length in 24", 48", 96", or 144" inches.
- 18-gauge cord in choice of 9 colors, see Cord Options for ordering info.
- One 5" canopy
- T-bar clip with 1/4-20 stud
- Hard ceiling anchor provided by others

### POWER CORD MOUNT (PC)



Power cord mount fixtures are provided with:

- 18-gauge cord in choice of 9 colors, see Cord Options for ordering info.
- One 5" canopy
- Power cord mounting adaptor

## CORD OPTIONS

Must specify cord when cable and power cord mounting.

ORDERING EXAMPLE: S2438/W				
CORD TYPE	LENGTH	# CONDUCTORS	WIRE SIZE	COLOR
S Straight	24 24"	3 3	8 18-gauge	<b>Standard</b> /W White /B Black
	48 48"	4 4		<b>Braided</b> <sup>[1]</sup> /WH White /BL Black
	96 96"	5 5		/BR Brass /AE Aegean Blue
		6 6		/RE Red /SV Silver
				/GU Gunmetal /NK Nickel /GR Gray

<sup>1</sup> (5) conductors cord only.

## COLOR DETAILS

Additional colors may be available, consult factory.



# 4CR<sup>LED</sup> 4" Cylinder – Round

## AVI-ON BLUETOOTH WIRELESS CONTROL DETAILS

### FEATURES

#### Simple

- Gateway-free distributed control
- Factory pre-commissioning
- Contractor friendly installation
- Occupancy/vacancy/daylight sensing

#### Scalable

- Virtually unlimited network size
- Spans small offices to large warehouses
- Flexible control strategies

#### Secure

- Optional cloud connectivity
- UL IoT platinum security rating
- DLC 5.0 compliant

### COMMISSIONING & INSTALLATION TOOLS

Avi-on mobile apps provide intuitive, quick installation and commissioning. Pro tools are available to qualified installers. Live commissioning training and on-site or remote support by Avi-on must be ordered separately through Avi-on.



Commissioning  
Mobile App

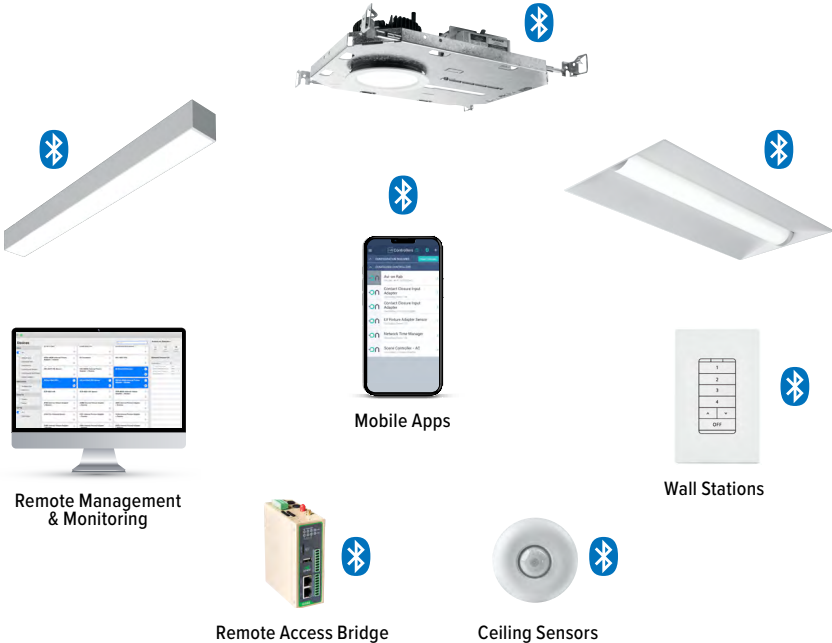


Zone Scanner  
Web App



Commissioning  
Pro App

### SYSTEM COMPONENTS



The Bluetooth® word mark and logos are registered trademarks owned by Bluetooth SIG, Inc. and any use of such marks by Avi-on is under license. Other trademarks and trade names are those of their respective owners.

### ACCESSORIES

WALL STATIONS	
AVI-2401AC	Scene controller - numbered 1-4, 120-277VAC
AVI-2402BAT	Scene controller - numbered 1-4, battery powered
AVI-2401AC-2	Dimmer with presets - percentages, 120-277VAC
AVI-2402BAT-2	Dimmer with presets - percentages, battery powered
AVI-2401AC-3	On/off/dimming, 120-277VAC
AVI-2402BAT-3	On/off/dimming, battery powered

NETWORK	
AVI-RAB-LTE	Remote access bridge – LTE connection
AVI-2001RAB-01-C	Remote access bridge – Wifi connection
AVI-KIT-NTM	Network time manager with battery backup
CEILING MOUNT SENSORS	
AVI-KIT-SEN-DUCM	PIR motion and ultrasonic sensor kit
AVI-KIT-SEN-ICM	PIR motion and photocell sensor kit

For load controllers and additional accessory info, see [hew.com/avi-on](http://hew.com/avi-on)

### ADDITIONAL CONTROL/DRIVER OPTIONS

Lumen restrictions apply: L9 min for DIM LINE driver. DMX, DALI, and LDE1 drivers installed in remote box, must specify RDB Option. Lutron Athena installed in remote box when specified with PM or SM Mounting Type, must specify RDB Option. 347V may require stepdown transformer, see product builder at [hew.com/product-builder](http://hew.com/product-builder).

CATALOG NUMBER	DESCRIPTION
AVI-LVFA/DA	Avi-on wireless fixture control for use with driver with 12V auxiliary power
AWNRR/DA	Lutron Athena wireless node integral fixture control, RF only, for use with driver with 12V auxiliary power
DIM	Dimming driver prewired for 0-10V low voltage applications
DIM1	1% dimming driver prewired for 0-10V low voltage applications
DIM LINE	Line voltage dimming driver (TRIAC and ELV compatible at 120V only)
DMX	0.1% dimming driver for DMX controls
DALI	DALI dimming driver
LDE1	Lutron Hi-lume 1% EcoSystem dimming LED driver

### RDB OPTION DETAILS

