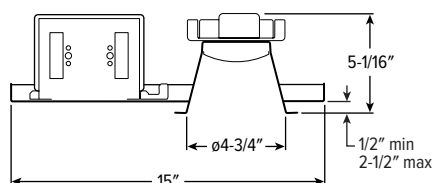
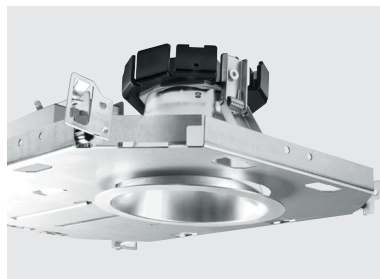


4LDR LED

4" Lite Downlight – Round



CATALOG #: _____

TYPE: _____

PROJECT: _____



NEW CONSTRUCTION AND REMODEL

FEATURES

- Simple and quick installation in new construction or remodel applications
- Rated for direct contact with insulation up to L20 lumen package
- Heavy-duty mounting springs secure fixture
- Maximize energy savings with efficacies up to 120 lm/W
- Top diffuser in trim enhances uniformity and minimizes glare
- Low UGR meets LEED and WELL requirements
- Made Right Here® in the USA

SPECIFICATIONS

- HEAT SINK** – Aluminum.
- TRIM** – Low-iridescent anodized aluminum with 1/2" standard flange and diffuse polycarbonate lens at top of open reflector. Semi-specular finish standard.
- ELECTRICAL** – High-quality mid-power LED boards. L70 >70,000 hours. 25°C max ambient operating temperature. 50/60 Hz constant current driver.
- MOUNTING** – Recessed. 20 ga. galvanized steel mounting pan for new construction. Remodel kit option includes receiver bracket hardware. Compatible with ø5" ceiling cutout. Heavy-duty mounting springs accommodate ceiling thicknesses from 1/2" - 2-1/2". Provided with 15" plenum-rated cable. New construction mounting pan accessory available. For remodel installations, the minimum plenum height from the top of 5/8" sheetrock is 6-1/4". Weight 2.25 lbs.
- LISTINGS** –
 - cETLus listed as LED luminaire suitable for dry or damp locations.
 - Conforms to UL STD.1598. Certified to CSA STD.C22.2 No.250.0.
 - Suitable for wet location under covered ceiling.
 - IC-rated for direct contact with insulation standard (must specify I mounting for L30 lumen stop).
 - City of Chicago Environmental Air approved when specified with CP option.
 - Complies with ASTM-E283 when specified with ATH option.
 - Build America, Buy America (BABA) and Buy American Act (BAA) compliant. Request certification at hew.com/buy-american
- WARRANTY** – 5-year limited warranty, see hew.com/warranty

ORDERING EXAMPLE: 4LDR - L20/835 - CS - OPTIONS - DIM - UNV - N - F1

HOUSING

SERIES	LUMENS ^[1]	CRI	CCT	REFLECTOR FINISH
4LDR	L10 1,000lm	8 80	30 3000K	CS Clear semi-specular anodize, 64° beam angle
	L15 1,500lm	9 90	35 3500K	WH White texture powder coat, 70° beam angle
	L20 2,000lm		40 4000K	BLK Black texture powder coat, 63° beam angle
	L30 3,000lm ^[2]			CS-MWT Clear semi-specular anodize with smooth matte white trim flange, 64° beam angle

OPTIONS ^[3]

EM/10W	10-watt emergency battery
EM/10W/ITS	10-watt emergency battery with integral test switch ^[4]
ATH	Airtight construction ^[5]
CP	Chicago plenum (CCEA) ^[6]

DRIVER

DIM	Driver with external 0-10V dimming wires
DIM1	1 % Driver with external 0-10V dimming wires
DIM LINE	Driver with line voltage dimming wires ^[7]

VOLTAGE

UNV	120-277V
347	347V

MOUNTING ^[8]

N-F1	New construction mounting pan with integral 2-position fixed bracket, universal bar hangers.
N-F1S	New construction mounting pan and junction box shipped ahead, integral 2-position fixed bracket, universal bar hangers included.
I-F1	IC-rated enclosure for new construction with integral 2-position fixed bracket, universal bar hangers. ^[9]
R	Remodel kit ^[10]

NOTES

- Lumens based on CS Reflector Finish and 80 CRI/3500K CCT. Actual performance may vary +/-5%. See page 2 for FIXTURE PERFORMANCE DATA.
- Must specify I Mounting for IC-rated listing.
- All EM batteries are CEC compliant.
- Extended lead times may apply. Consult factory for availability.
- Must specify I Mounting.
- Must specify I Mounting.
- Not available with L10 lumen package.
- See page 3 for MOUNTING HARDWARE ACCESSORIES DETAILS.
- Not available with EM batteries. I Mounting requires external brackets.
- Also used in new construction sheetrock ceilings. Pan-less installation.



4LDR LED

4" Lite Downlight – Round

FIXTURE PERFORMANCE DATA

	DELIVERED LUMENS	WATTAGE	EFFICACY (lm/W)
L10	1017	9.3	109
L15	1534	13.8	111
L20	2033	17.0	120
L30	3018	26.0	116

MULTIPLIER TABLES

COLOR TEMPERATURE	
CCT	CONVERSION FACTOR
3000K	0.98
3500K	1.00
4000K	1.01

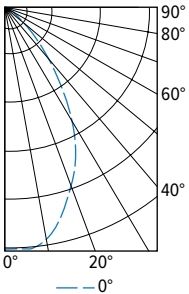
80 CRI	3000K	0.79
80 CRI	3500K	0.82
80 CRI	4000K	0.84

REFLECTOR FINISH	
CATALOG NUMBER	CONVERSION FACTOR
CS	1.00
WH	0.89
BL	0.47
CS-MWT	1.00

- Photometrics tested in accordance with IESNA LM-79. Results based on CS Reflector Finish, 80 CRI/3500K CCT, wattage for 120V input, and 25°C ambient temperature. Actual performance may vary +/-5%.
- To calculate lumen output in emergency mode, multiply the battery wattage by the efficacy.
- Use multiplier tables to calculate additional options.

PHOTOMETRY

4LDR-L20/835-CS-DIM-UNV Total Luminaire Output: 2033 lumens; 17 Watts | Efficacy: 120 lm/W | 80 CRI; 3500K CCT



CANDLEPOWER DISTRIBUTION	VERTICAL ANGLE	HORIZONTAL ANGLE	ZONAL LUMENS
		0°	
	0	1867	
	5	1874	177
	15	1669	466
	25	1284	583
	35	765	476
	45	321	253
	55	81	74
	65	2	3
	75	1	1
	85	0	0
	90	0	

LUMEN SUMMARY	ZONE	LUMENS	% FIXTURE
	0 - 30	1226	60
	0 - 40	1702	84
	0 - 60	2029	100
	0 - 90	2033	100
	0 - 180	2033	100

REFLECTOR FINISH DETAILS

WH



CS



BLK



CS-MWT



EMERGENCY BATTERY DETAILS

TEST SWITCH DETAILS



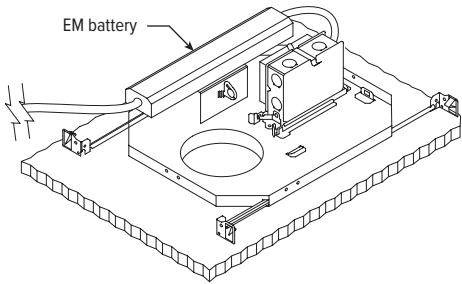
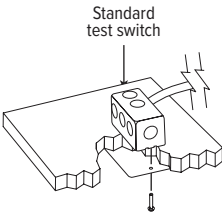
Integral



Standard
2-3/4" x 4-1/2"

MOUNTING DETAILS

Max remote distance is 50',
connection by others.



H.E. Williams, Inc.

Carthage, Missouri

www.hew.com

417-358-4065

Designed and Manufactured in the USA

REV.01/27/26.LA

Downlight
Page 2 of 3

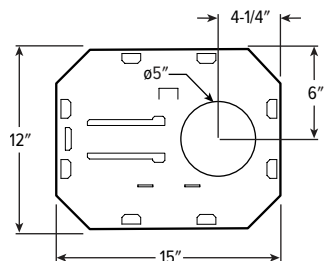
4LDR LED 4" Lite Downlight – Round

MOUNTING HARDWARE ACCESSORIES DETAILS

Flex conduit is recommended for installation.

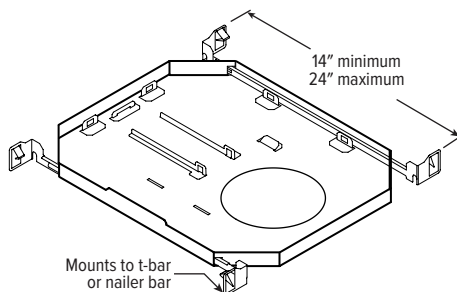
NEW CONSTRUCTION

PAN DIMENSIONS



Ceiling Cutout: $\phi 6-1/2"$

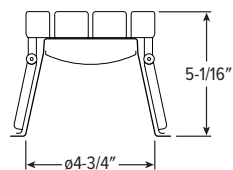
MOUNTING HARDWARE



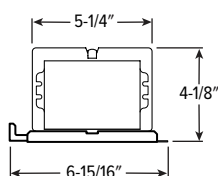
REMODEL

H.E. Williams Inc. strongly recommends installing a trial fixture to confirm fitment on-site prior to ordering full project quantities.

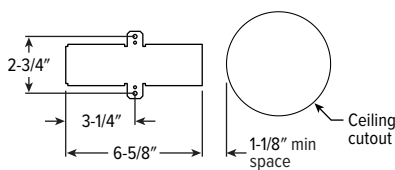
CROSS SECTION



DRIVER & JUNCTION BOX

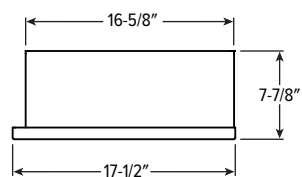


RECEIVER BRACKET

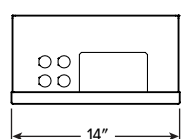


IC-RATED ENCLOSURE

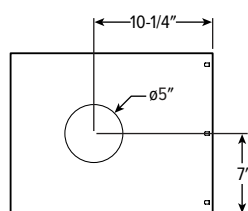
SIDE VIEW



FRONT VIEW



PAN DIMENSIONS



MOUNTING HARDWARE

