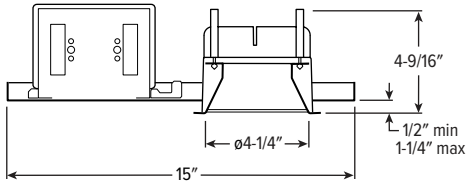
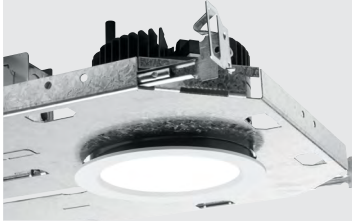


4PR tunable WHITE 4.5" Shallow Plenum Downlight – Round



CATALOG #: _____

TYPE: _____

PROJECT: _____

NEW CONSTRUCTION AND REMODEL

FEATURES

TrimLock®

- Innovative TrimLock reflector retention system ensures trim remains flush with ceiling plane
- Tunable white from 2700K to 5000K CCT, minimum 80 CRI
- Slim 5" depth for minimal plenum space applications
- 4 inch aperture is unobtrusive in small scale spaces
- Die cast trim with flush lens provides glare-free illumination for a soft ceiling appearance
- Fully room-side accessible

SPECIFICATIONS

- HOUSING** – Spun housing with forged aluminum heat sink. Galvanized steel splice compartment with driver mounting plate/enclosure. Mounting clips allow for ceiling thickness from 1/2" – 1-1/4" (consult factory for additional ceiling thicknesses).
- TRIMLOCK** – Innovative TrimLock reflector retention system ensures the trim remains flush with the ceiling plane.
- LENSED TRIM** – Die-cast aluminum frame with micro-prismatic, acrylic lens.
- ELECTRICAL** – High-performance Class 2 LED array. Modular quick-connect plug for easy field-connection of LED light assembly to driver. Reported L70>50,000 hours. Tunable White products use LEDs of multiple CCTs and may produce a perceptibly different shade of white from single-CCT products at the same CCT. All CCTs are within 3 MacAdam ellipses.
- MOUNTING** – Recessed. 20 ga. galvanized steel mounting pan for new construction or IC-rated enclosure. Remodel kit option includes receiver bracket hardware.
- LISTINGS** –
 - cCSAus conforms to UL STD 1598; Certified to CAN/CSA STD C22.2 No. 250.0 for damp locations. LED light assembly conforms to UL 2108 for remote installation.
 - Suitable for wet location under covered ceiling when specified with WET/CC option.
 - IC-rated for direct contact with insulation when specified with I Mounting Type.
 - City of Chicago Environmental Air approved when specified with CP option.
 - Complies with ASTM-E283 when specified with ATH option.
 - RoHS compliant.
- WARRANTY** – 5-year limited warranty, see hew.com/warranty.

ORDERING EXAMPLE: 4PR - TL - L18/8TW - OPTIONS - DIM - UNV - LW - OF - WH - TRIM OPTIONS - N - F1

HOUSING

SERIES	LUMENS ⁽¹⁾	COLOR	OPTIONS	CONTROL	VOLTAGE
4PR-TL	L11 1,100lm	8TW Tunable white (80 CRI, 2700K-5000K)	EM/7W 7-watt emergency battery ⁽²⁾	DALI Driver prewired for DALI applications	UNV 120-277V
TrimLock	L18 1,800lm		EM/10W 10-watt emergency battery ⁽³⁾	DIM Dimming driver with (1) 0-10V signal to control dimming and (1) 0-10V signal to control CCT	
			EM/10W/RTS 10-watt emergency battery with regressed test switch ⁽⁴⁾	DMX Driver prewired for DMX applications	
			ATH Airtight construction	PSQ Lutron T-Series 2-channel tunable white 1%. ⁽⁶⁾	
			CP Chicago plenum (CCEA) ⁽⁵⁾		
			F Fuse kit		

TRIM ⁽⁷⁾

TRIM TYPE	DISTRIBUTION ⁽⁸⁾	FLANGE TYPE	REFLECTOR FINISH	TRIM OPTIONS
L Flush lens	W 65° Wide	OF 1/2" standard flange	CS Clear semi-specular powder coat	IP IP65 rated trim
A Angled lens ⁽⁹⁾	M 35° Medium	SF 1/4" mud-in flange ⁽¹¹⁾	WH White texture powder coat	AD Diffuse acrylic lens ⁽¹²⁾
S Non-conductive flush lens for shower applications ⁽¹⁰⁾	N 25° Narrow		BL Black texture powder coat	PD Diffuse 1/8" polycarbonate lens ⁽¹³⁾
				WET/CC Wet location, covered ceiling listed ⁽¹⁴⁾
				AM Anti-microbial ⁽¹⁵⁾

MOUNTING

MOUNTING TYPE ⁽¹⁶⁾

- N Open pan for new construction
- I IC-rated enclosure for new construction
- R Remodel kit ⁽¹⁸⁾

MOUNTING HARDWARE ⁽¹⁷⁾

- F1 Integral 2-position fixed pan bracket, universal bar hanger included ⁽¹⁹⁾
- BA1 Adjustable butterfly pan bracket, bar hanger not included ⁽²⁰⁾
- CA1 Adjustable caterpillar pan bracket, universal bar hanger included ⁽²¹⁾

NOTES

- Lumen output based on L trim type, M distribution and WH finish, 4000K/80CRI. Actual lumens may vary +/-5%. See page 2 for FIXTURE PERFORMANCE DATA.
- N and R Mounting Types only. Not available with ATH or IP options.
- N and R Mounting Types only. Not available with ATH or IP options.
- Not available with WET/CC, ATH or IP options. N and R Mounting Types only. See page 3 for .
- I Mounting Type required.
- Not available with I Mounting Type.
- Trim ships separately.
- Beam angle based on WH reflector finish and L Trim Type.
- Wide distribution only. Diffuse acrylic lens standard.
- W Distribution, OF Flange Type, WH Reflector Finish only. Standard with AD diffuse acrylic lens. IP and WET/CC options standard.
- For use with mud-in plaster construction only, supplied with mud flange installation kit. See page 3 for FLANGE TYPE DETAILS. Not available with ATH or IP options.
- L Trim Type only. W distribution only.
- W distribution only.
- Not available with PD trim option.
- WH and BL Reflector Finishes only. Not available with S Trim Type.
- Mounting hardware required (N and I only), ordered separately, see MOUNTING HARDWARE ordering info. See page 3 for MOUNTING TYPE DETAILS.
- Additional mounting hardware options available. See page 4 for MOUNTING HARDWARE DETAILS.
- Also used in new construction sheetrock ceilings.
- N and I Mounting Types only. I Mounting requires external brackets.
- N Mounting Type only.
- N Mounting Type only.



4PR tunable WHITE

4.5" Shallow Plenum Downlight – Round

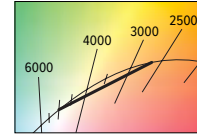
FIXTURE PERFORMANCE DATA

	DISTRIBUTION	DELIVERED LUMENS	WATTAGE	EFFICACY (lm/W)
L11	W	1025	14.6	70.4
	M	1193	14.6	82.0
	N	1184	14.6	81.4
L18	W	1664	24.0	69.3
	M	1936	24.0	80.7
	N	1922	24.0	80.1

MULTIPLIER TABLES

COLOR TEMPERATURE		
CCT	LUMENS	WATTS
2700K	0.83	1.03
3000K	1.00	1.00
3500K	0.99	0.99
4000K	1.00	1.00
5000K	0.98	1.03

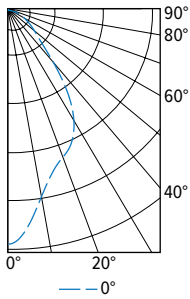
TRIM	
CATALOG NUMBER	CONVERSION FACTOR
S	0.85
AD	0.85
PD	0.85



- Photometrics tested in accordance with IESNA LM-79. Results shown are based on 25°C ambient temperature.
- Wattage shown is based on 120V input.
- Results based on 4000K, 80 CRI, actual lumens may vary +/-5%
- Use multiplier tables to calculate additional options.

PHOTOMETRY

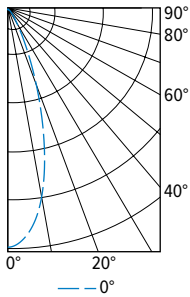
4PR-TL-L18/8TW-DIM-UNV-LW-OF-WH Total Luminaire Output: 1664 lumens; 24.0 Watts | Efficacy: 69.3 lm/W | 80.0 CRI; 4051K CCT



CANDLEPOWER DISTRIBUTION	VERTICAL ANGLE	HORIZONTAL ANGLE	ZONAL LUMENS
		0°	
	0	1332	
	5	1241	113
	15	961	272
	25	842	384
	35	602	369
	45	276	221
	55	161	145
	65	94	94
	75	47	50
	85	12	14
	90	2	

LUMEN SUMMARY	ZONE	LUMENS	% FIXTURE
	0 - 40	1138	68
	0 - 60	1505	90
	0 - 90	1664	100
	0-180	1664	100

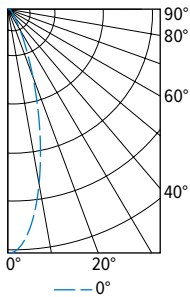
4PR-TL-L18/8TW-DIM-UNV-LM-OF-WH Total Luminaire Output: 1936 lumens; 24.0 Watts | Efficacy: 80.7 lm/W | 80.0 CRI; 4051K CCT



CANDLEPOWER DISTRIBUTION	VERTICAL ANGLE	HORIZONTAL ANGLE	ZONAL LUMENS
		0°	
	0	4549	
	5	4319	392
	15	2698	732
	25	915	433
	35	274	179
	45	113	90
	55	59	53
	65	34	34
	75	17	19
	85	4	5
	90	1	

LUMEN SUMMARY	ZONE	LUMENS	% FIXTURE
	0 - 40	1736	90
	0 - 60	1879	97
	0 - 90	1936	100
	0-180	1936	100

4PR-TL-L18/8TW-DIM-UNV-LN-OF-WH Total Luminaire Output: 1922 lumens; 24.0 Watts | Efficacy: 80.1 lm/W | 80.0 CRI; 4051K CCT



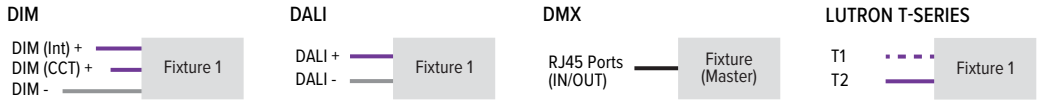
CANDLEPOWER DISTRIBUTION	VERTICAL ANGLE	HORIZONTAL ANGLE	ZONAL LUMENS
		0°	
	0	6450	
	5	5825	508
	15	2730	746
	25	729	351
	35	202	133
	45	95	75
	55	57	52
	65	34	34
	75	17	18
	85	4	5
	90	1	

LUMEN SUMMARY	ZONE	LUMENS	% FIXTURE
	0 - 40	1738	90
	0 - 60	1864	97
	0 - 90	1922	100
	0-180	1922	100



4PR tunable WHITE 4.5" Shallow Plenum Downlight – Round

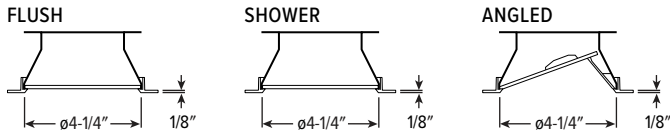
CONTROL DETAILS



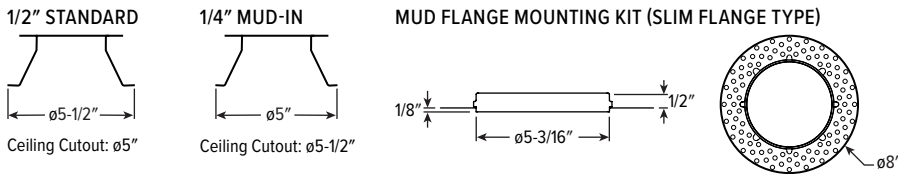
TRIMLOCK DETAILS



TRIM TYPE DETAILS



FLANGE TYPE DETAILS

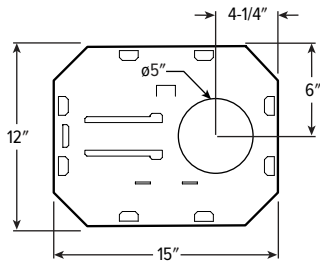


REFLECTOR FINISH DETAILS

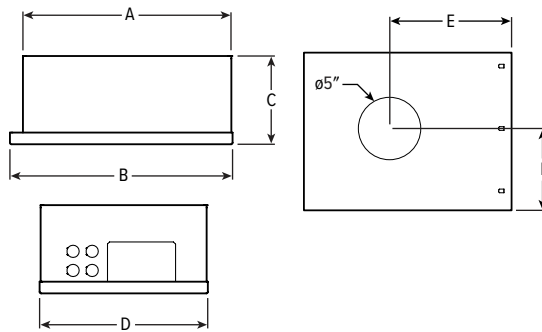


MOUNTING TYPE DETAILS

NEW CONSTRUCTION

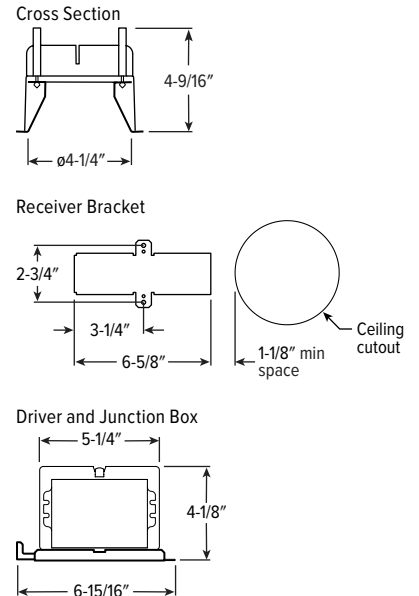


IC-RATED



LUMENS	LENGTH					
	A	B	C	D	E	F
L11	15-1/16"	16"	4-1/2"	12-1/8"	9-1/2"	6-1/16"
L18			6-3/8"			

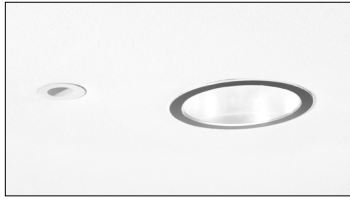
REMODEL



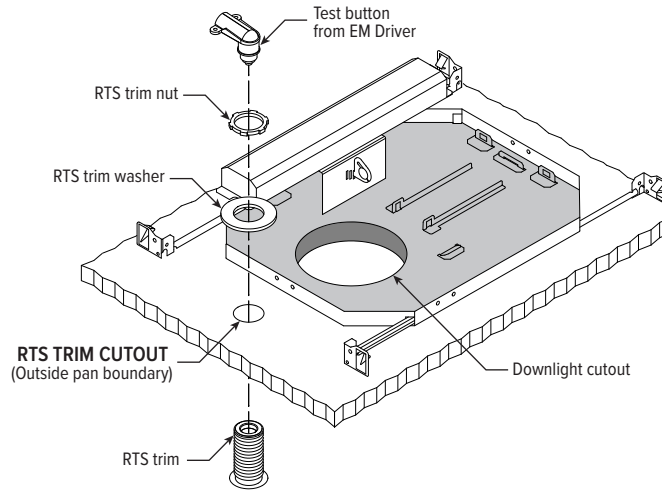
4PR tunable WHITE

4.5" Shallow Plenum Downlight – Round

EM/10W/RTS DETAILS

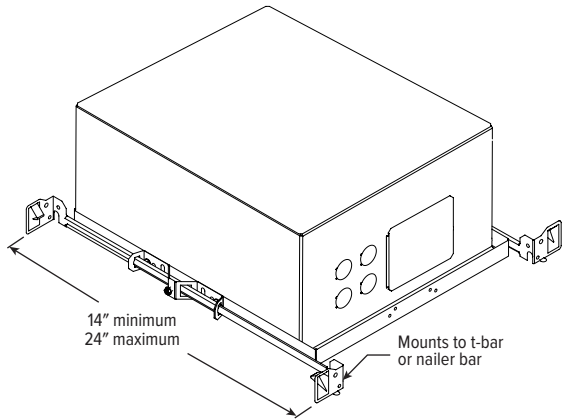
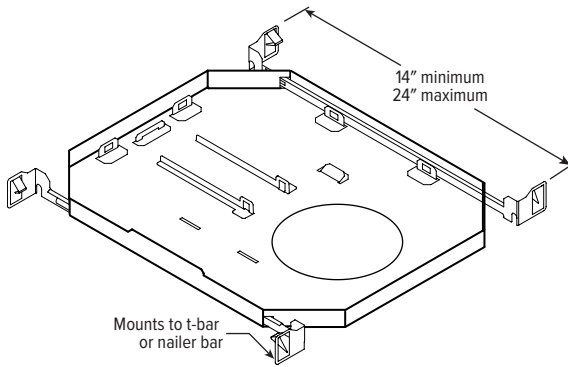


Shown Installed



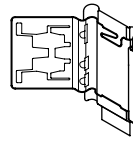
MOUNTING HARDWARE DETAILS

F1 Integral 2-position fixed pan bracket, universal bar hanger included

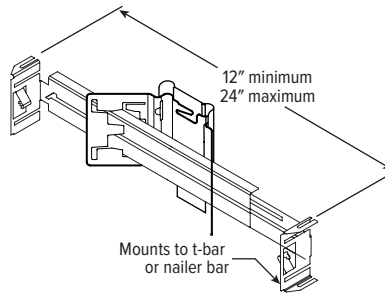


F1 with I Mounting Type

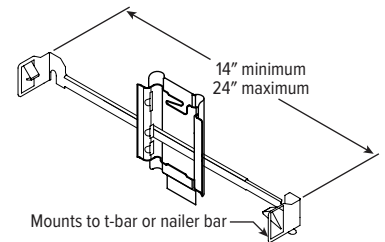
BA1 Adjustable butterfly pan bracket, bar hanger not included (N Mounting Type only)



BA2 Adjustable butterfly pan bracket, heavy-duty universal bar hanger included (N Mounting Type only)



CA1 Adjustable caterpillar pan bracket, universal bar hanger included (N Mounting Type only)



CA2 Adjustable caterpillar pan bracket, t-bar hanger included (N Mounting Type only)

