

6AR dim to WARM

6" Adjustable Downlight – Round

FEATURES

- Dim to warm from 1800K to 3000K CCT, minimum 95 CRI
- Adjustable aim with 0° - 45° tilt and 360° rotation
- Beam angles ranging from 25° narrow to 55° wide for tailored performance
- Etched degree markers and directional indicator make it simple to fine-tune the illumination angle
- Spring clip retention system eliminates trim sag
- Choice of open reflector or die-cast lensed trims to complement interior style
- Contemporary design provides glare-free illumination for a soft ceiling appearance
- Fully room-side accessible
- New construction mounting pan, IC-rated, or pan-less remodel kit available

SPECIFICATIONS

- HOUSING – Die-cast aluminum spun and stamped articulating mechanism with forged aluminum heat sink. Galvanized steel splice compartment with driver mounting plate/enclosure. Mounting clips allow for ceiling thickness from 1/2" - 7/8".
- OPEN REFLECTOR – Low-iridescent anodized aluminum. Clear semi-specular finish standard.
- LENSED TRIM – Die-cast aluminum frame with micro-prismatic, acrylic lens.
- ELECTRICAL – High-performance Class 2 C.O.B. LED array. Modular quick-connect plug for easy field-connection of LED light assembly to driver. Reported L70>55,000 hours. Reported L90>55,000 hours. Estimated L70 = 200,000 hours.
- MOUNTING – Recessed. 20 ga. galvanized steel mounting pan for new construction or IC-rated enclosure. Remodel kit option includes receiver bracket hardware. N and R mounting types for use in non-fire rated installations only.

- LISTINGS –
 - cCSAus conforms to UL STD 1598; Certified to CAN/CSA STD C22.2 No. 250.0 for dry and damp locations. LED light assembly conforms to UL 2108 for remote installation.
 - Suitable for wet location under covered ceiling when specified with WET/CC option.
 - IC-rated for direct contact with insulation when specified with I Mounting Type.
 - City of Chicago Environmental Air approved when specified with CP option.
 - Complies with ASTM-E283 when specified with ATH option.
 - RoHS compliant.
- WARRANTY – 5-year limited warranty, see hew.com/warranty.

FIXTURE PERFORMANCE DATA

OPEN REFLECTOR TRIM TYPE

	DISTRIBUTION	DELIVERED LUMENS	CCT AT 100% (FULL OUTPUT)	CCT AT 1% (FULL DIM)	WATTAGE	EFFICACY (lm/W)
L8	W	768	3000K	1800K	14.0	54.9
	M	800			14.0	57.1
	N	-			-	-
L14	W	1347			23.4	57.6
	M	1402			23.4	60.0
	N	-			-	-
L23	W	2206			37.7	58.6
	M	2296			37.7	60.9
	N	-			-	-

FLUSH LENS TRIM TYPE

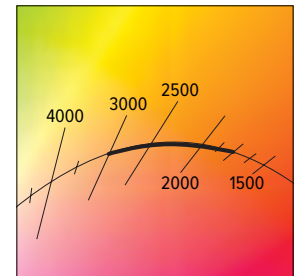
	DISTRIBUTION	DELIVERED LUMENS	CCT AT 100% (FULL OUTPUT)	CCT AT 1% (FULL DIM)	WATTAGE	EFFICACY (lm/W)
L8	W	694	3000K	1800K	14.0	49.6
	M	744			14.0	53.1
	N	738			14.0	52.7
L14	W	1216			23.4	52.0
	M	1304			23.4	55.8
	N	1294			23.4	55.4
L23	W	1991			37.7	52.9
	M	2135			37.7	56.7
	N	2119			37.7	56.3

ANGLED LENS TRIM TYPE

	DISTRIBUTION	DELIVERED LUMENS	CCT AT 100% (FULL OUTPUT)	CCT AT 1% (FULL DIM)	WATTAGE	EFFICACY (lm/W)
L8	W	578	3000K	1800K	14.0	41.3
	M	689			14.0	49.2
	N	703			14.0	50.2
L14	W	1013			23.4	43.3
	M	1208			23.4	51.7
	N	1233			23.4	52.8
L23	W	1659			37.7	44.0
	M	1978			37.7	52.5
	N	2019			37.7	53.6

MULTIPLIER TABLES

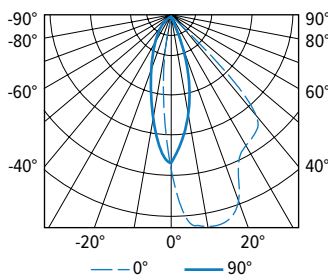
OPEN REFLECTOR FINISH		TRIM	
CATALOG NUMBER	CONVERSION FACTOR	CATALOG NUMBER	CONVERSION FACTOR
CS	1.00	AD ¹	0.85
WH	0.89	PD ¹	0.85
BL	0.79		



- 1 Distribution will also be affected, consult factory.
 - Photometrics tested in accordance with IESNA LM-79. Results shown are based on 25°C ambient temperature.
 - Wattage shown is based on 120V input.
 - Results based on 3000K, 95 CRI, full output, 0° tilt, actual lumens may vary +/-5%
 - Use multiplier tables to calculate additional options.

PHOTOMETRY

6AR-L23/9DW-DIM1-UNV-OW-OF-CS (25° tilt) Total Luminaire Output: 2192 lumens; 37.7 Watts | Efficacy: 58.1 lm/W | 95.0 CRI; 3000K CCT



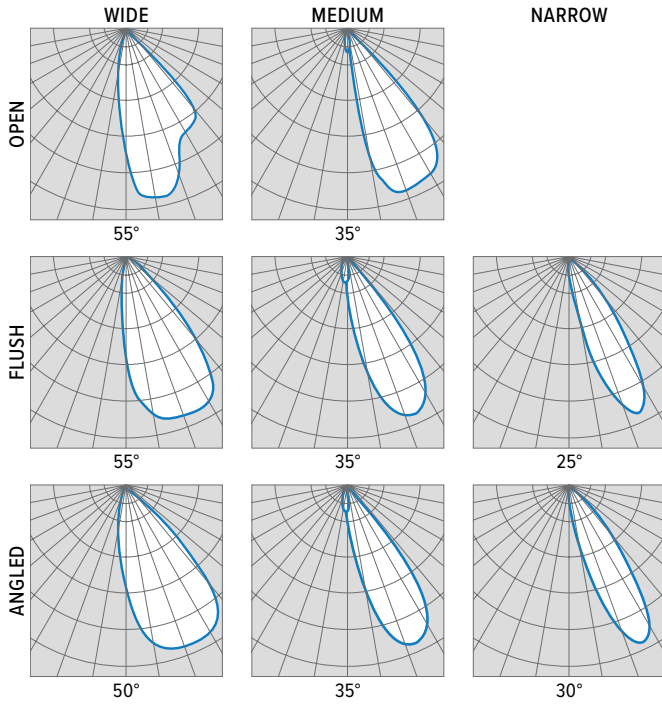
VERTICAL ANGLE	HORIZONTAL ANGLE					ZONAL LUMENS
	0°	45°	90°	135°	180°	
0	2897	2897	2897	2897	2897	
5	4047	3567	2566	1787	1442	241
15	4237	3163	1469	492	345	522
25	3246	2828	602	136	102	607
35	2882	2122	121	29	22	559
45	1885	236	12	7	7	251
55	22	2	0	0	2	13
65	0	0	0	0	0	0
75	0	0	0	0	0	0
85	0	0	0	0	0	0
90	0	0	0	0	0	0

LUMEN SUMMARY	ZONE	LUMENS	% FIXTURE
	0 - 40	1928	88
	0 - 60	2192	100
	0 - 90	2192	100
	0 - 180	2192	100

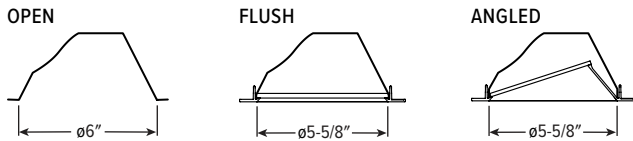


6AR dim to WARM

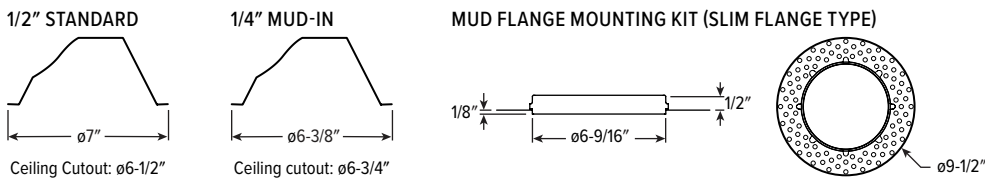
6" Adjustable Downlight – Round



TRIM TYPE DETAILS



FLANGE TYPE DETAILS



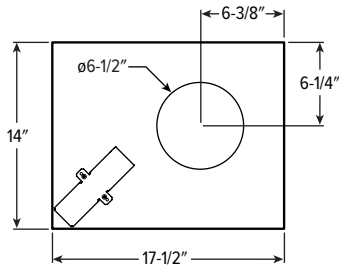
REFLECTOR FINISH DETAILS



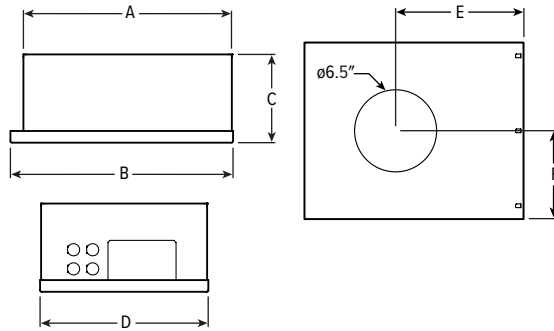
6AR dim to WARM 6" Adjustable Downlight – Round

MOUNTING TYPE DETAILS

NEW CONSTRUCTION

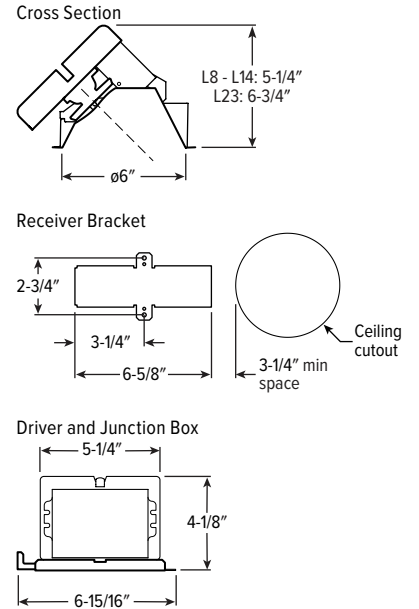


IC-RATED



LUMENS	LENGTH					
	A	B	C	D	E	F
L8	15-3/16"	16"	6-3/8"	12-1/8"	9-1/2"	6-1/16"
L14	16-5/8"	17-1/2"	7-7/8"	14"	10-1/4"	7"

REMODEL

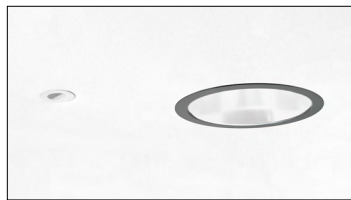


APERTURE ADAPTOR ORDERING INFO

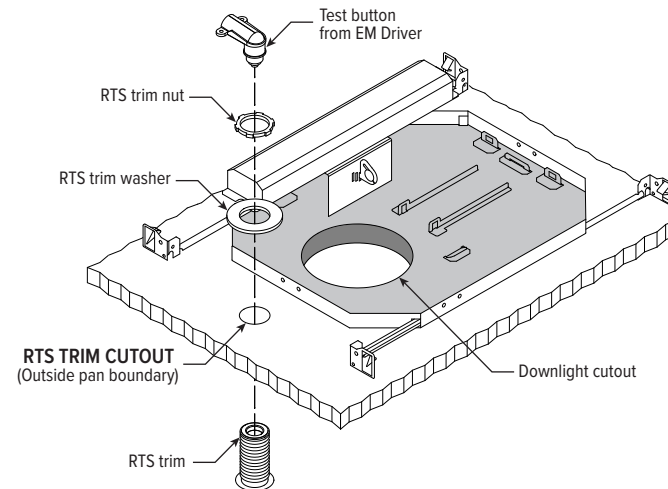
ORDERING EXAMPLE: 4DR - GR - 0575 - WHT			
SERIES	CATALOG NUMBER	CEILING CUTOUT	FINISH
4AR 6AR	GR	Specify ceiling cutout in 1/8" increments. Example: 5.75" = 0575	See Kit Components for application limits.
4DR 6DR			
4DS 6DS			
4PR 6PR			
4PS 6PS			
8DR			
			CS Clear semi-specular powder coat WH White texture powder coat BL Black texture powder coat

Additional finishes available, consult factory. For use with remodel downlights. For limitations and instructions, see hew.com/aperture-adaptor.pdf

EM/10W/RTS DETAILS



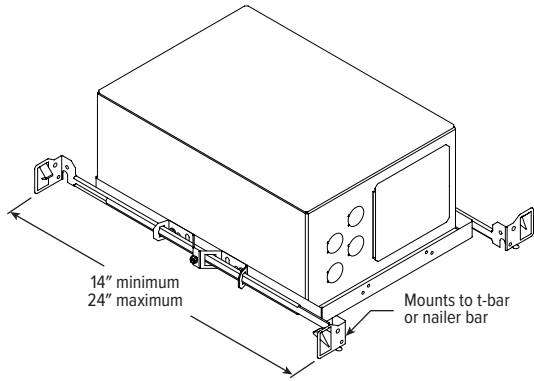
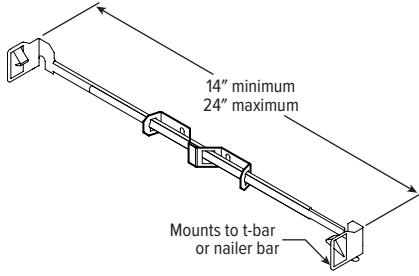
Shown Installed



6AR dim to WARM 6" Adjustable Downlight – Round

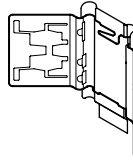
MOUNTING HARDWARE DETAILS

F1 Factory-installed 2-position fixed pan bracket, universal bar hanger included, ships uninstalled

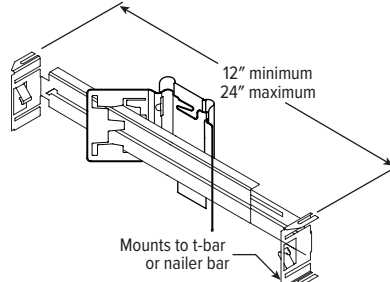


F1 with I Mounting Type

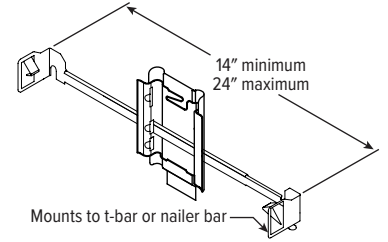
BA1 Adjustable butterfly pan bracket, bar hanger not included (N Mounting Type only)



BA2 Adjustable butterfly pan bracket, heavy-duty universal bar hanger included (N Mounting Type only)



CA1 Adjustable caterpillar pan bracket, universal bar hanger included (N Mounting Type only)



CA2 Adjustable caterpillar pan bracket, t-bar hanger included (N Mounting Type only)

