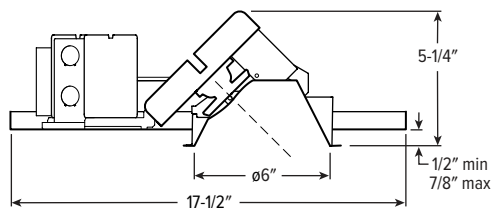


6AR tunable WHITE 6" Adjustable Downlight – Round



CATALOG #: _____

TYPE: _____

PROJECT: _____

NEW CONSTRUCTION AND REMODEL

ORDERING EXAMPLE: 6AR - L12/8TW - OPTIONS - DIM - UNV - OW - OF - CS - TRIM OPTIONS - N - F1

HOUSING

TRIM

MOUNT



HOUSING

SERIES	LUMENS ^[1]	COLOR	OPTIONS	CONTROL	VOLTAGE
6AR	L12 1,200lm L20 2,000lm	8TW Tunable white (80 CRI, 2700K-5000K)	See page 3 for EMERGENCY BATTERY OPTIONS. ATH Airtight construction ^[2] CP Chicago plenum (CCEA) ^[3] F Fuse kit	See page 4 for CONTROL DETAILS. DALI Driver prewired for DALI applications DIM Dimming driver with (1) 0-10V signal to control dimming and (1) 0-10V signal to control CCT DMX Driver prewired for DMX applications PSQ Lutron T-Series 2-channel tunable white 1%. ^[4]	UNV 120-277V

TRIM ^[5]

TRIM TYPE	DISTRIBUTION ^[6]	FLANGE TYPE	REFLECTOR FINISH	TRIM OPTIONS
O Open reflector	W Wide	OF 1/2" standard flange	Open trim types	MWT Textured white trim flange ^[9]
L Flush lens	55° Open	SF 1/4" mud-in flange ^[8]	CS Clear semi-specular anodize	AD Diffuse acrylic lens ^[10]
A Angled lens	55° Flush		WH White texture powder coat	PD Diffuse 1/8" polycarbonate lens ^[11]
	50° Angled		BL Black texture powder coat	WET/CC Wet location, covered ceiling listed ^[12]
	M Medium		Lens trim types	AM Anti-microbial ^[13]
	35° Open		CS Clear semi-specular powder coat	
	35° Flush		WH White texture powder coat	
	35° Angled		BL Black texture powder coat	
	N Narrow ^[7]			
	25° Flush			
	30° Angled			

MOUNTING

MOUNTING TYPE ^[14]	MOUNTING HARDWARE ^[15]
N Open pan for new construction	F1 Factory-installed 2-position fixed pan bracket, universal bar hanger included ^[18]
I IC-rated enclosure for new construction ^[16]	BA1 Adjustable butterfly pan bracket, bar hanger not included ^[19]
R Remodel kit ^[17]	CA1 Adjustable caterpillar pan bracket, universal bar hanger included ^[20]

NOTES

¹ Lumen output based on O trim type, M distribution and CS finish, 4000K/80CRI. Actual lumens may vary +/-5%. See page 2 for FIXTURE PERFORMANCE DATA.

² I Mounting Type required.

³ I Mounting Type required.

⁴ Not available with I Mounting Type.

⁵ Trim ships separately.

⁶ Beam angle based on CS or WH reflector finish.

⁷ L and A Trim Types only.

⁸ For use with mud-in plaster construction only, supplied with mud flange installation kit. See page 4 for FLANGE TYPE DETAILS. Not available with ATH option.

⁹ Not available with WH Reflector Finish or L Trim Type.

¹⁰ L and A Trim Types only. W distribution only.

¹¹ L and A Trim Types only. W distribution only.

¹² L and A Trim Types only. Not available with PD trim option.

¹³ WH and BL Reflector Finishes only.

¹⁴ Mounting hardware required (N and I only), ordered separately, see MOUNTING HARDWARE ordering info. See page 4 for MOUNTING TYPE DETAILS.

¹⁵ Additional mounting hardware options available. See page 5 for MOUNTING HARDWARE DETAILS.

¹⁶ Not available with EM batteries.

¹⁷ Also used for new construction sheetrock ceilings. Pan-less installation.

¹⁸ N and I Mounting Types only. Universal bar hanger ships uninstalled. I Mounting requires external brackets.

¹⁹ N Mounting Type only.

²⁰ N Mounting Type only.



6AR tunable WHITE

6" Adjustable Downlight – Round

FEATURES

- Support human-centric design with adaptive, individualized lighting using tunable white light
- Adjustable aim with 0° - 45° tilt and 360° rotation
- Beam angles ranging from 25° narrow to 55° wide for tailored performance
- Etched degree markers and directional indicator make it simple to fine-tune the illumination angle
- Spring clip retention system eliminates trim sag
- Choice of open reflector or die-cast lensed trims to complement interior style
- Contemporary design provides glare-free illumination for a soft ceiling appearance
- Fully room-side accessible
- New construction mounting pan, IC-rated, or pan-less remodel kit available

SPECIFICATIONS

- HOUSING** – Die-cast aluminum spun and stamped articulating mechanism with forged aluminum heat sink. Galvanized steel splice compartment with driver mounting plate/enclosure. Mounting clips allow for ceiling thickness from 1/2" - 7/8".
- OPEN REFLECTOR** – Low-iridescent anodized aluminum. Clear semi-specular finish standard.
- LENSED TRIM** – Die-cast aluminum frame with micro-prismatic, acrylic lens.
- ELECTRICAL** – High-performance Class 2 LED array. Modular quick-connect plug for easy field-connection of LED light assembly to driver. Reported L70>50,000 hours. Tunable White products use LEDs of multiple CCTs and may produce a perceptibly different shade of white from single-CCT products at the same CCT. All CCTs are within 3 MacAdam ellipses.
- MOUNTING** – Recessed. 20 ga. galvanized steel mounting pan for new construction or IC-rated enclosure. Remodel kit option includes receiver bracket hardware. N and R mounting types for use in non-fire rated installations only.

- LISTINGS** –
 - cCSAus conforms to UL STD 1598; Certified to CAN/CSA STD C22.2 No. 250.0 for dry and damp locations. LED light assembly conforms to UL 2108 for remote installation.
 - Suitable for wet location under covered ceiling when specified with WET/CC option.
 - IC-rated for direct contact with insulation when specified with I Mounting Type.
 - City of Chicago Environmental Air approved when specified with CP option.
 - Complies with ASTM-E283 when specified with ATH option.
 - RoHS compliant.
 - Complies with the Buy American Act and other federal regulations. Request certification at hew.com/baa.
- WARRANTY** – 5-year limited warranty, see hew.com/warranty.

FIXTURE PERFORMANCE DATA

OPEN REFLECTOR TRIM TYPE

	DIST.	DELIVERED LUMENS	WATTAGE	EFFICACY (lm/W)
L12	W	1180	14.6	81
	M	1228	14.6	84
	N	–	–	–
L20	W	1985	24.0	83
	M	2027	24.0	85
	N	–	–	–

FLUSH LENS TRIM TYPE

	DISTRIBUTION	DELIVERED LUMENS	WATTAGE	EFFICACY (lm/W)
L12	W	1065	14.6	73
	M	1141	14.6	78
	N	1133	14.6	78
L20	W	1771	24.0	74
	M	1877	24.0	78
	N	1793	24.0	75

- Photometrics tested in accordance with IESNA LM-79. Results shown are based on 25°C ambient temperature.
- Wattage shown is based on 120V input.
- Results based on 4000K, 80 CRI, 0° tilt, actual lumens may vary +/-5%
- To calculate lumen output in emergency mode, multiply the battery wattage by the efficacy.
- Use multiplier tables to calculate additional options.

ANGLED LENS TRIM TYPE

	DIST.	DELIVERED LUMENS	WATTAGE	EFFICACY (lm/W)
L12	W	887	14.6	61
	M	1058	14.6	73
	N	1080	14.6	74
L20	W	1475	24.0	62
	M	1728	24.0	72
	N	1693	24.0	71

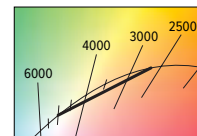
MULTIPLIER TABLES

COLOR TEMPERATURE		
CCT	LUMENS	WATTS
2700K	0.83	1.03
3000K	1.00	1.00
3500K	0.99	0.99
4000K	1.00	1.00
5000K	0.98	1.03

OPEN REFLECTOR FINISH	
CATALOG NUMBER	CONVERSION FACTOR
CS	1.00
WH	0.89
BL	0.79

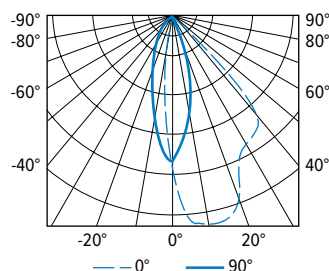
TRIM	
CATALOG NUMBER	CONVERSION FACTOR
AD ¹	0.85
PD ¹	0.85

¹ Distribution will also be affected, consult factory.



PHOTOMETRY

6AR-L12/8TW-DIM-UNV-OW-OF-CS (25° tilt) Total Luminaire Output: 1104 lumens; 14.6 Watts | Efficacy: 75.6 lm/W | 80.0 CRI; 4037K CCT



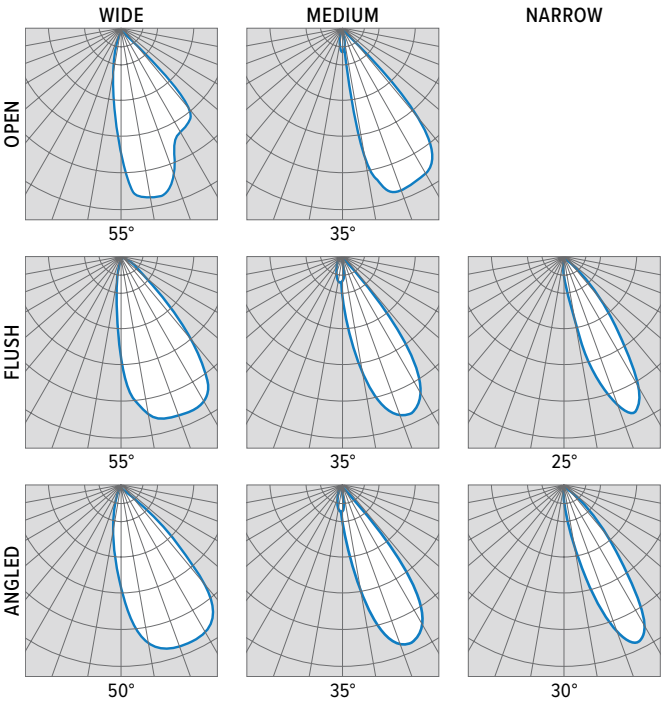
VERTICAL ANGLE	HORIZONTAL ANGLE					ZONAL LUMENS
	0°	45°	90°	135°	180°	
0	1459	1459	1459	1459	1459	
5	2038	1796	1292	900	726	121
15	2134	1593	740	248	174	263
25	1635	1424	303	68	52	306
35	1452	1068	61	15	11	281
45	949	119	6	3	3	126
55	11	1	0	0	1	7
65	0	0	0	0	0	0
75	0	0	0	0	0	0
85	0	0	0	0	0	0
90	0	0	0	0	0	0

LUMEN SUMMARY	ZONE	LUMENS	% FIXTURE
	0 - 40	971	88
	0 - 60	1104	100
	0 - 90	1104	100
	0 - 180	1104	100



6AR tunable WHITE

6" Adjustable Downlight – Round



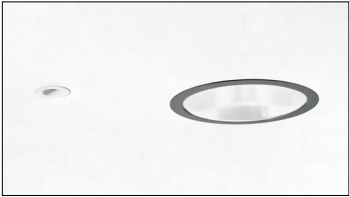
EMERGENCY BATTERY OPTIONS

Additional limitations apply, see page 1. Specify CEC in the option code when California Energy Commission regulations are required.

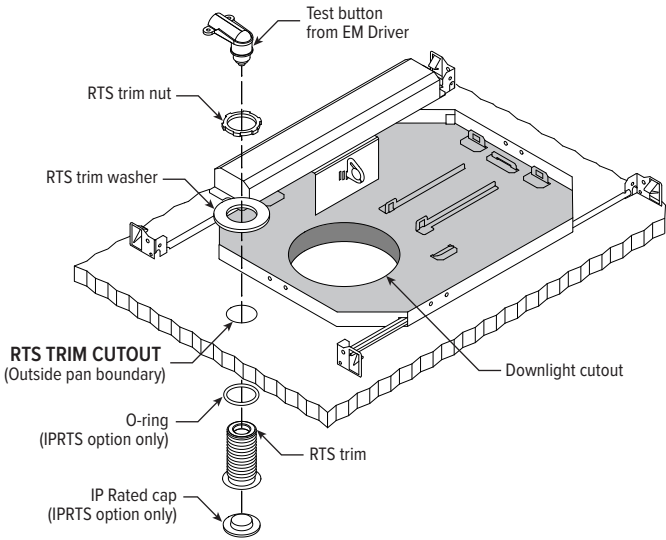
CATALOG NUMBER	DESCRIPTION
EM/7W	7-watt emergency battery
EM/7W/RTS	7-watt emergency battery with regressed test switch ¹
EM/7W/IPRTS	7-watt emergency battery with IP65 rated regressed test switch
EM/10W	10-watt emergency battery
EM/10W/RTS	10-watt emergency battery with regressed test switch ¹
EM/10W/IPRTS	10-watt emergency battery with IP65 rated regressed test switch

¹ Not available with WET/CC Option.

REGRESSED TEST SWITCH DETAILS



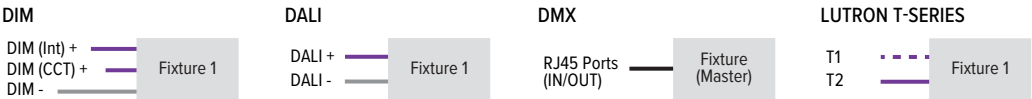
Shown Installed



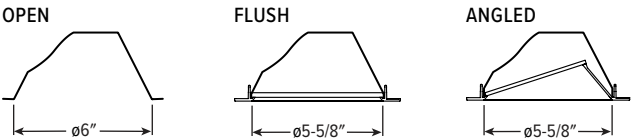
6AR tunable WHITE

6" Adjustable Downlight – Round

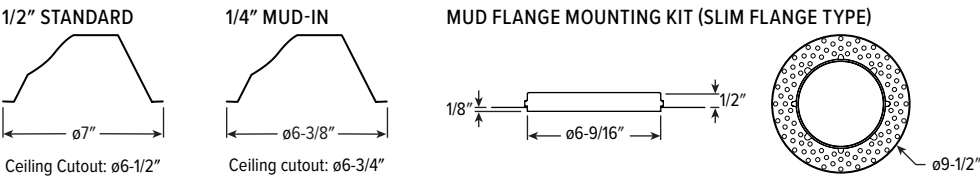
CONTROL DETAILS



TRIM TYPE DETAILS



FLANGE TYPE DETAILS

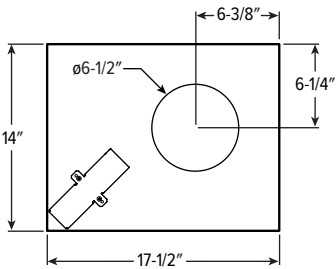


REFLECTOR FINISH DETAILS

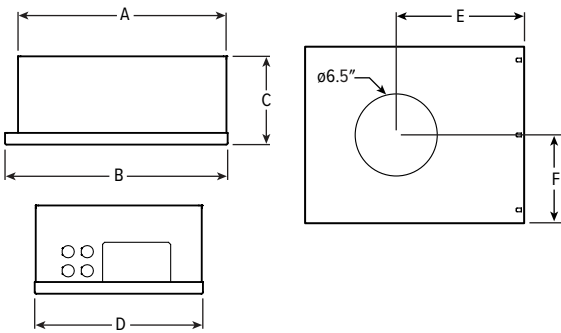


MOUNTING TYPE DETAILS

NEW CONSTRUCTION

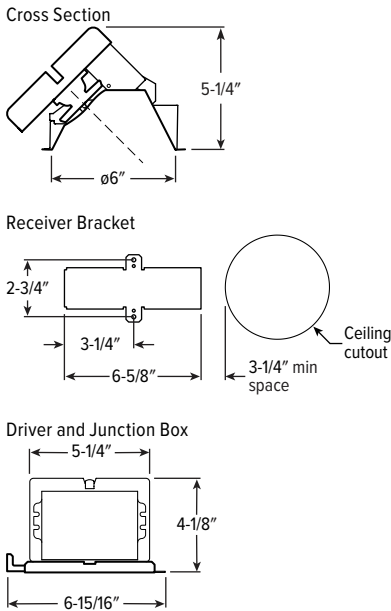


IC-RATED



LUMENS	LENGTH					
	A	B	C	D	E	F
L12	15-3/16"	16"	6-3/8"	12-1/8"	9-1/2"	6-1/16"
L20	16-5/8"	17-1/2"	7-7/8"	14"	10-1/4"	7"

REMODEL



6AR tunable WHITE

6" Adjustable Downlight – Round

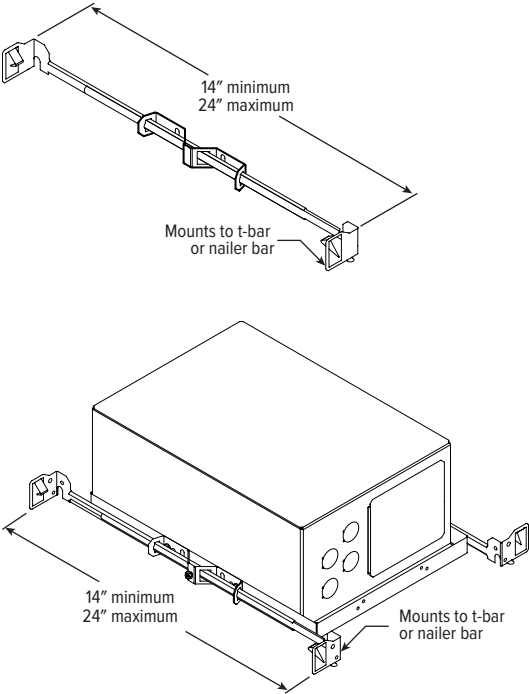
APERTURE ADAPTOR ORDERING INFO

ORDERING EXAMPLE: 4DR - GR - 0575 - WHT				
SERIES	CATALOG NUMBER	CEILING CUTOUT	FINISH	
4AR 6AR	GR	Specify ceiling cutout in 1/8" increments. Example: 5.75" = 0575	CS	Clear semi-specular powder coat
4DR 6DR			WH	White texture powder coat
4DS 6DS			BL	Black texture powder coat
4PR 6PR				
4PS 6PS		See Kit Components for application limits.		
8DR				

For use with remodel downlights. Additional finishes available, consult factory.
For limitations and instructions, see hew.com/aperture-adaptor.pdf

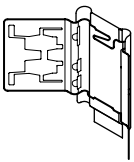
MOUNTING HARDWARE DETAILS

F1 Factory-installed 2-position fixed pan bracket, universal bar hanger included, ships uninstalled

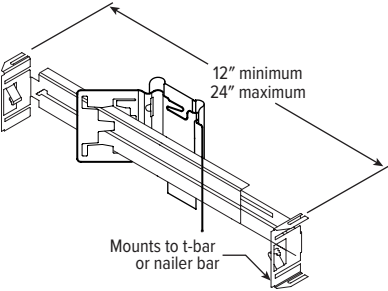


F1 with I Mounting Type

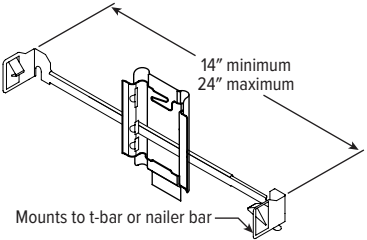
BA1 Adjustable butterfly pan bracket, bar hanger not included (N Mounting Type only)



BA2 Adjustable butterfly pan bracket, heavy-duty universal bar hanger included (N Mounting Type only)



CA1 Adjustable caterpillar pan bracket, universal bar hanger included (N Mounting Type only)



CA2 Adjustable caterpillar pan bracket, t-bar hanger included (N Mounting Type only)

