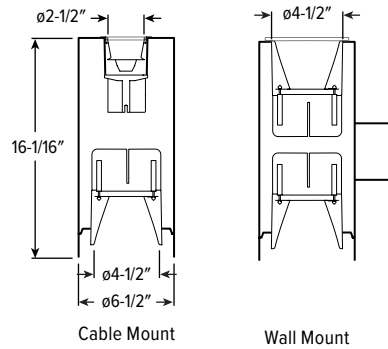


6CRDI^{LED} 6.5" Compact Direct/Indirect Cylinder – Round



CATALOG #: _____

TYPE: _____

PROJECT: _____



ORDERING EXAMPLE: 6CRDI - TL - 16 - L20/835U/L20/835D - RDB - OPTIONS - WHT - CONTROL/DIM - UNV - LW/LM - CS - TRIM OPTIONS - CM |
HOUSING TRIM MOUNT.

HOUSING

SERIES	HEIGHT	LUMEN PACKAGE (Example: L30/835U/L15/835D)	REMOTE	OPTIONS	HOUSING FINISH ^[1]
6CRDI - TL TrimLock	16 16"	Specify lumen packages: U for Up and D for Down LUMENS ^[4] L10 1,000lm L15 1,500lm L20 2,000lm L30 3,000lm L40 4,000lm L50 5,000lm CRI CCT U OR D 8 80 27 2700K U Uplight 9 90 30 3000K D Downlight 35 3500K 40 4000K 50 5000K	RDB Remote mount control/driver box, galvanized steel ^[2]	EM/10WRM/RTS Remote mount 10-watt emergency battery with regressed test switch ^[3]	ALUM Silver sparkle aluminum BLK Textured black BRZ Textured bronze NKL Textured nickel SLV Textured silver WHT Textured white

CONTROL

See page 4 for ADDITIONAL CONTROL/DRIVER OPTIONS.

– None

AVI-LVFA Avi-on wireless fixture control ^[5]

AWNRLutron Athena wireless node fixture control, RF only ^[6]

DRIVER

See page 4 for ADDITIONAL CONTROL/DRIVER OPTIONS.

DIM Entire fixture switches and dims together ^[7]

DIM1 1% Dimming driver, 0-10V

DA Driver with 12V auxiliary power, without external dimming wires ^[8]

VOLTAGE

UNV 120-277V

347 347V ^[9]

TRIM

TRIM TYPE AND DISTRIBUTION

(Example Uplight/Downlight: LW/LM)

TRIM TYPE	DISTRIBUTION
Uplight	See page 2 for BEAM ANGLE.
O Open reflector with clear glass shield ^[13]	
L Flush lens ^[14]	Uplight
	W Wide
Downlight	M Medium ^[15]
O Open reflector	N Narrow ^[16]
F Open reflector with frosted top diffuser	Downlight
L Flush lens	W Wide
R Regressed lens	M Medium ^[17]
	N Narrow ^[18]

REFLECTOR FINISH ^[10]

Downlight Open Trim Types
CS Clear semi-specular anodize
SG Satin-glow anodize
GD Gold anodize
CG Champagne gold anodize
PW Pewter anodize
SPC Clear specular anodize
RG Rose gold anodize
WH White texture powder coat
BL Black texture powder coat

Downlight Lens Trim Types
CS Clear semi-specular powder coat
WH White texture powder coat
BL Black texture powder coat
BZ Bronze texture powder coat
NK Nickel texture powder coat
SV Silver texture powder coat
AL Silver sparkle aluminum

TRIM OPTIONS

AD Diffuse acrylic lens ^[11]
PD Diffuse 1/8" polycarbonate lens ^[12]

MOUNTING

MOUNTING TYPE ^[19]

CM Adjustable aircraft cable mount, 24", 48", 96", or 144" only, must specify. Example: 24" cable = CM24 ^[20]

WM Wall mount ^[21]

NOTES

¹ See page 5 for HOUSING FINISH DETAILS.

² Painted driver box available, specify RDB/BLK or RDB/WHT.

³ Max remote distance 50', including suspension length. Large remote box provided. EM light defaults to downlight output. Specify CEC in the option code when California Energy Commission regulations are required. See page 4 for EMERGENCY BATTERY DETAILS.

⁴ Lumen output based on O Trim Type, W Distribution and CS Reflector Finish, 80 CRI/3500K CCT. Actual performance may vary +/-5%. See page 2 for FIXTURE PERFORMANCE DATA.

⁵ DA Driver only. See page 6 for AVI-ON BLUETOOTH WIRELESS CONTROL DETAILS.

⁶ DA Driver only.

⁷ Requires 5 conductor cord.

⁸ Avi-on and Lutron Athena Controls only.

⁹ Not available with EM batteries or DA drivers.

¹⁰ Specified for downlight Trim Type only. See page 5 for REFLECTOR FINISH DETAILS.

¹¹ Not available with O or F Trim Types. Downlight only. W Distribution only.

¹² Not available with O or F Trim Types. Downlight only. W Distribution only.

¹³ CS Reflector Finish standard. Other colors available, consult factory.

¹⁴ Not available with WM Mounting Type. Trim finish matches Housing Finish. Other colors available, consult factory.

¹⁵ O Trim Type only when specified with WM Mounting Type.

¹⁶ O Trim Type only.

¹⁷ O Trim Type only when specified with L50 lumen package.

¹⁸ O Trim Type only when specified with L50 lumen package.

¹⁹ See page 5 for MOUNTING DETAILS.

²⁰ L20 lumen package max for uplight. Canopy painted white unless specified otherwise. Must specify cord. See page 5 for CORD OPTIONS.

²¹ L50 lumen package max.



6CRDI LED 6.5" Compact Direct/Indirect Cylinder – Round

FEATURES

- Engineered to deliver great performance in a sleek, space-saving design
- Smoothly accent walls and eliminate dark ceilings with direct and indirect lighting
- Parallel the performance and style of the Williams downlight collection
- Superior optical control with beams as narrow as 10° and field changeable optics as wide as 65°
- Complement the architectural elements of any space with a multitude of housing, trim and cord finishes
- Precision-engineered extruded aluminum housing and die-cast aluminum trim face for clean aesthetic
- Reflectors create smooth, low-glare radiance
- Low UGR meets LEED and WELL requirements
- Wireless in-fixture control solutions available
- Made Right Here® in the USA

SPECIFICATIONS

- HOUSING – Extruded aluminum with die-cast aluminum accent ring.
- FINISH – Polyester powder coat bonded to phosphate-free, multi-stage pretreated metal. All parts painted after fabrication to facilitate installation, increase efficiency, and inhibit corrosion.
- TRIMLOCK – Innovative TrimLock® reflector retention system ensures trim remains secure.
- OPEN REFLECTOR – Low-iridescent anodized aluminum. Clear semi-specular finish standard.
- LENSED TRIM – Die-cast aluminum frame with micro-prismatic lens (acrylic downlight, tempered glass uplight).
- ELECTRICAL – High-performance Class 2 C.O.B. LED array. Modular quick-connect plug for easy field-connection of LED light assembly to driver. Reported L70>55,000 hours. Reported L90>55,000 hours. Estimated L70 = 200,000 hours. 50/60 Hz constant current driver.
- MOUNTING – Cable or wall mount. Indoor applications only. Control, driver, and EM battery installed in remote mount box.
- LISTINGS –
 - cSAs conform to UL STD 1598 and UL STD 8750. Certified to CAN/CSA STD C22.2 No. 250.0. Suitable for dry and damp locations.
 - Build America, Buy America (BABA) and Buy American Act (BAA) compliant. Request certification at hew.com/buy-american
- WARRANTY – 5-year limited warranty, see hew.com/warranty

FIXTURE PERFORMANCE DATA

		DOWNLIGHT							UPLIGHT WALL MOUNT			UPLIGHT CABLE MOUNT					
		WATTAGE	OPEN REFLECTOR		FLUSH LENS		REGRESSED LENS		WATTAGE	OPEN REFLECTOR		WATTAGE	OPEN REFLECTOR		FLUSH LENS		
			DELIVERED LUMENS	EFFICACY (lm/W)	DELIVERED LUMENS	EFFICACY (lm/W)	DELIVERED LUMENS	EFFICACY (lm/W)		DELIVERED LUMENS	EFFICACY (lm/W)		DELIVERED LUMENS	EFFICACY (lm/W)	DELIVERED LUMENS	EFFICACY (lm/W)	
DIST.	L	W	9.0	1027	114	674	75	660	73	9.0	871	97	10.6	760	72	1019	96
		M	9.0	999	111	895	99	895	99	9.0	847	94	10.6	734	69	1004	95
		N	9.0	1000	111	914	102	882	98	9.0	848	94	10.6	653	62	—	—
L15	W	13.9	1466	105	994	72	972	70	13.9	1243	89	17.5	1285	73	1723	98	
	M	13.9	1471	106	1319	95	1319	95	13.9	1247	90	17.5	1241	71	1697	97	
	N	13.9	1473	106	1347	97	1300	94	13.9	1249	90	17.5	1014	58	—	—	
L20	W	19.8	2005	101	1352	68	1323	67	19.8	1700	86	23.2	1687	73	2263	98	
	M	19.8	2002	101	1794	91	1795	91	19.8	1697	86	23.2	1630	70	2228	96	
	N	19.8	2004	101	1833	93	1769	89	19.8	1699	86	23.3	1332	57	—	—	
L30	W	27.8	2985	107	2022	73	1979	71	27.8	2531	91	<ul style="list-style-type: none">▪ Photometrics tested in accordance with IESNA LM-79. Results based on CS (O Trim Type) or WH (L and R Trim Types) Reflector Finish, W Distribution, 80 CRI/3500K CCT, average wattage for 120V input, and 25°C ambient temperature. Actual performance may vary +/-5%.▪ Wattage is for downlight or uplight components. Add wattages together for selected lumen packages to find total fixture wattage.▪ To calculate lumen output in emergency mode,					
	M	27.8	2900	104	2683	97	2685	97	27.8	2459	88						
	N	27.8	2734	98	2741	99	2646	95	27.8	2318	83						
L40	W	38.0	3979	105	2695	71	2638	69	38.0	3373	89						
	M	38.0	3865	102	3577	94	3579	94	38.0	3277	86						
	N	38.0	3644	96	3654	96	3527	93	38.0	3089	81						
L50	W	45.2	5124	113	3364	74	3292	73	45.2	4344	96						
	M	45.2	4956	110	—	—	—	—	45.2	4202	93						
	N	45.2	4818	107	—	—	—	—	45.2	4085	90						

- Photometrics tested in accordance with IESNA LM-79. Results based on CS (O Trim Type) or WH (L and R Trim Types) Reflector Finish, W Distribution, 80 CRI/3500K CCT, average wattage for 120V input, and 25°C ambient temperature. Actual performance may vary +/-5%.
- Wattage is for downlight or uplight components. Add wattages together for selected lumen packages to find total fixture wattage.
- To calculate lumen output in emergency mode, multiply the battery wattage by the efficacy.
- Use multiplier tables to calculate additional options.

MULTIPLIER TABLES

COLOR TEMPERATURE		
	CCT	CONVERSION FACTOR
80 CRI	2700K	0.92
	3000K	0.98
	3500K	1.00
	4000K	1.01
	5000K	1.02
90 CRI	2700K	0.76
	3000K	0.79
	3500K	0.82
	4000K	0.84
	5000K	0.88

REFLECTOR FINISH		
	CATALOG NUMBER	CONVERSION FACTOR
O TRIM	CS	1.00
	SG ^[1]	0.92
	GD	0.93
	CG	0.96
	PW	0.86
	SPC	1.02
	RG	0.88
	WH ^[1]	0.89
	BL ^[1]	0.47
R TRIM	WH	1.00
	CS ^[1]	0.98
	BL ^[1]	0.79
	BZ ^[1]	0.76
	NK ^[1]	0.81
	SV ^[1]	0.81
	AL ^[1]	0.86

TRIM OPTIONS	
CATALOG NUMBER	CONVERSION FACTOR
F	0.75
AD	0.85
PD	0.85

- Distribution will also be affected, consult factory.
- Beam angle based on CS or WH Reflector Finish.

BEAM ANGLE

TRIM TYPE ^[2]								
	DOWNLIGHT				WM UPLIGHT		CM UPLIGHT	
	O	F	L	R	O	O	L	
W	65°	60°	50°	50°	65°	70°	50°	
M	45°	50°	35°	30°	45°	40°	30°	
N	10°	25°	25°	25°	10°	15°	20°	

PHOTOMETRY CONTINUED ON NEXT PAGE.



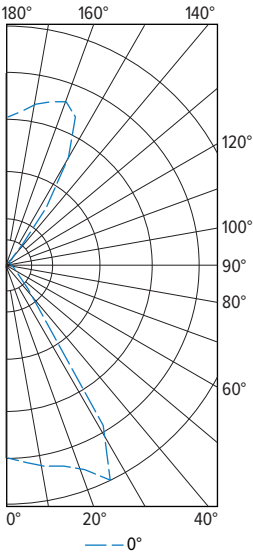
6CRDI

LED

6.5" Compact Direct/Indirect Cylinder – Round

PHOTOMETRY

6CRDI-TL-16-L20/835U/L20/835D-DIM-UNV-OW/OW-CS-WM Total Luminaire Output: 3820 lumens; 38.8 Watts | Efficacy: 98 lm/W | 80 CRI; 3500K CCT

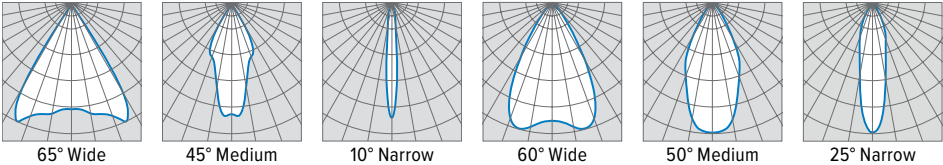


CANDLEPOWER DISTRIBUTION	VERTICAL ANGLE	HORIZONTAL ANGLE	ZONAL LUMENS
		0°	
	0	1810	
	5	1864	179
	15	1960	560
	25	2231	952
	35	307	367
	45	44	37
	55	11	11
	65	1	2
	75	0	0
	85	0	1
	90	3	
	95	4	4
	105	5	6
	115	9	9
	125	18	18
	135	58	68
	145	608	391
	155	1474	647
	165	1528	433
	175	1389	135
	180	1333	

LUMEN SUMMARY	ZONE	LUMENS	% FIXTURE
	0 - 30	1692	44
	0 - 40	2059	54
	0 - 60	2107	55
	0 - 90	2110	55
	90 - 120	19	1
	90 - 150	496	13
	90 - 180	1710	45
	0 - 180	3820	100

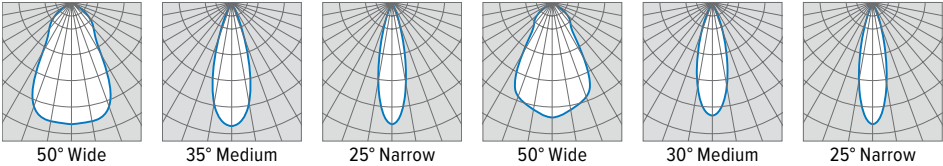
DOWNLIGHT

OPEN (O)



OPEN TOP DIFFUSER (F)

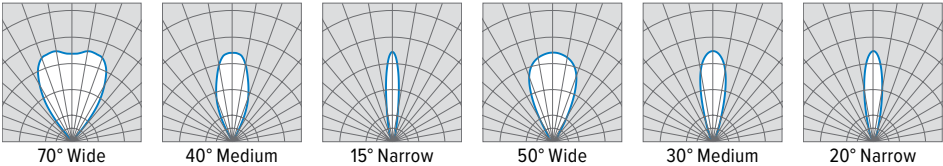
FLUSH (L)



REGRESSED (R)

UPLIGHT CABLE MOUNT

OPEN (O)



FLUSH (L)

TRIMLOCK DETAILS

TWIST



PULL



RELEASE

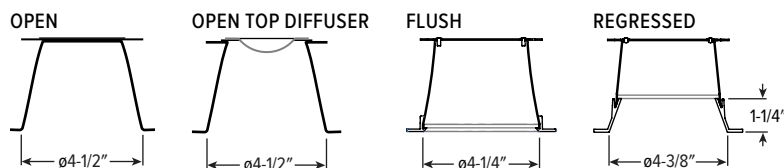


6CRDI LED

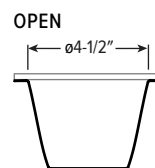
6.5" Compact Direct/Indirect Cylinder – Round

TRIM TYPE DETAILS

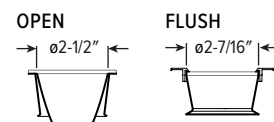
DOWNLIGHT



UPLIGHT WALL MOUNT



UPLIGHT CABLE MOUNT



ADDITIONAL CONTROL/DRIVER OPTIONS

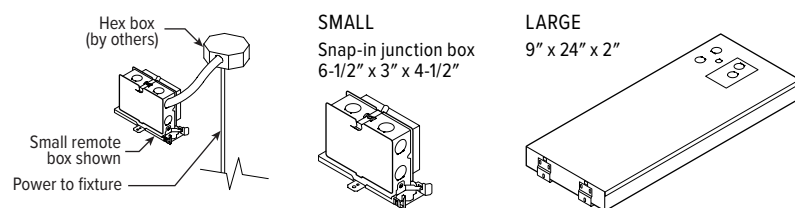
Lumen restrictions apply: L50 max for DALI driver. L40 max for DMX and LDE1 drivers. 347V only available with DIM and DIM1 drivers. L15 min for DIM LINE driver when specified downlight wall mount or uplight.

CONTROL/DRIVER	DESCRIPTION	RDB DETAILS BY LUMEN STOP ^[1]						
		L10	L15	L20	L30	L40	L50	w/EM
DIM	Dimming driver prewired for 0-10V low voltage applications; entire fixture switches and dims together	RIS	RIS	RIS	RIS	RIL	RIL	RIL
DIMU/DIMD	Dimming driver prewired for 0-10V low voltage applications; up and down portions switch and dim separately	RIS	RIS	RIS	RIS	RIL	RIL	RIL
DIM1	1% dimming driver prewired for 0-10V low voltage applications	RIS	RIS	RIS	RIS	RIL	RIL	RIL
DIM1U/DIM1D	1% dimming driver prewired for 0-10V low voltage applications; up and down portions switch separately	RIS	RIS	RIS	RIS	RIL	RIL	RIL
DIM LINE	Line voltage dimming driver (TRIAC and ELV compatible, 120V only)	—	RIS	RIS	RIS	RIL	RIL	RIL
DIM LINEU/DIM LINED	Line voltage switching and line voltage dimming; up and down portions switch separately	—	RIS	RIS	RIS	RIL	RIL	RIL
DMX	0.1% dimming driver for DMX controls	RIL	RIL	RIL	RIL	RIL	—	RIL
DMX/DMX	0.1% dimming driver for DMX controls; up and down portions switch separately	RIL	RIL	RIL	RIL	RIL	—	RIL
DALI	DALI dimming driver	RIL	RIL	RIL	RIL	RIL	RIL	RIL
DALI/DALI	DALI dimming driver; up and down portions switch separately	RIL	RIL	RIL	RIL	RIL	RIL	RIL
LDE1	Lutron Hi-lume 1% EcoSystem dimming LED driver	RIL	RIL	RIL	RIL	RIL	—	RIL
LDE1/LDE1	Lutron Hi-lume 1% EcoSystem dimming LED driver; up and down portions switch separately	RIL	RIL	RIL	RIL	RIL	—	RIL
AVI-LVFA/DA	Avi-on wireless fixture control for use with driver with 12V auxiliary power. Up and down switch together.	RIL	RIL	RIL	RIL	RIL	RIL	RIL
AVI-LVFA/DA-U/D	Avi-on wireless fixture control for use with driver with 12V auxiliary power. Up and down switch separately.	RIL	RIL	RIL	RIL	RIL	RIL	RIL
AWNRR/DA	Lutron Athena wireless node fixture control, RF only, for use with driver with 12V auxiliary power. Up and down switch together.	RIS	RIS	RIS	RIS	RIL	RIL	RIL
AWNRR/DA-U/D	Lutron Athena wireless node fixture control, RF only, for use with driver with 12V auxiliary power. Up and down switch separately.	RIS	RIS	RIS	RIS	RIL	RIL	RIL

¹ If using two different stops for U/D, see highest lumen stop for RDB.

REMOTE MOUNT DETAILS

Max remote distance is 50', connection by others. Must be room-side accessible for maintenance.



REMOTE MOUNT KEY

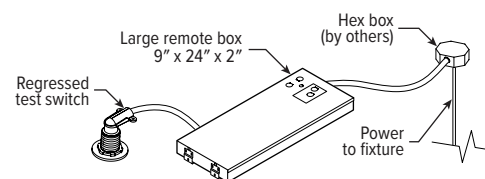
RIS	RDB Required, Small Box
RIL	RDB Required, Large box

EMERGENCY BATTERY DETAILS



Regressed test switch
ø1-3/4"

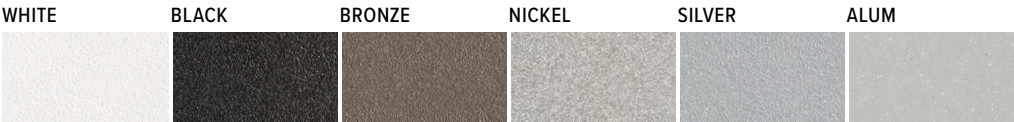
Max remote distance is 50' including suspension length, connection by others.



6CRDI LED

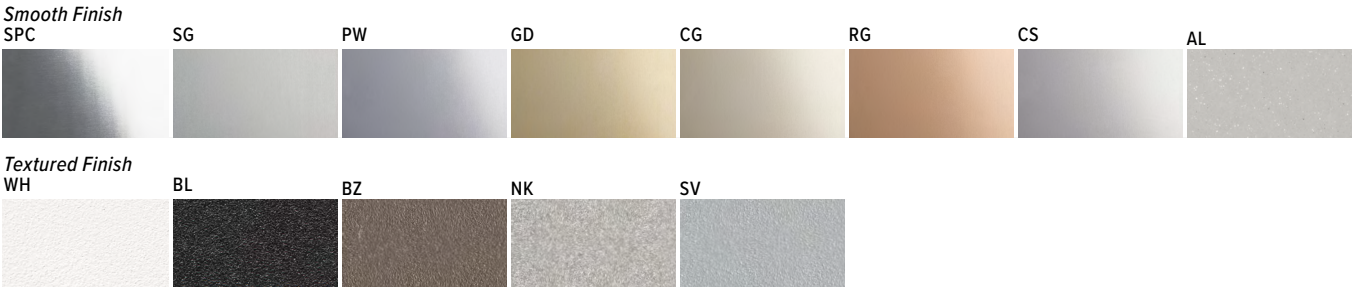
6.5" Compact Direct/Indirect Cylinder – Round

HOUSING FINISH DETAILS



For custom color, please specify RAL code or a manufacturer code with description. All custom colors other than RAL require two sample swatches, minimum 1" square.

REFLECTOR FINISH DETAILS



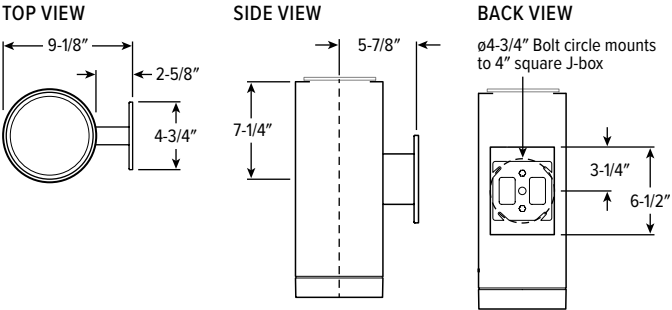
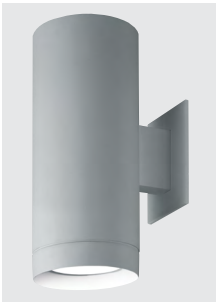
MOUNTING DETAILS

CABLE MOUNT (CM__)



- Provided with:
- Adjustable length aircraft cable, must specify length in 24", 48", 96", or 144" inches.
 - 18-gauge cord, see Cord Options for ordering info.
 - One 5" canopy
 - T-bar clip with 1/4-20 stud
 - Hard ceiling anchor provided by others

WALL MOUNT (WM)



CORD OPTIONS

Must specify cord when cable mounting.

ORDERING EXAMPLE: S2438/W				
CORD TYPE	LENGTH	# CONDUCTORS	WIRE SIZE	COLOR
S Straight	24 24" 48 48" 96 96"	3 3 4 4 5 5 6 6	8 18-gauge	Standard
				/W White
				/B Black
				Braided ⁽¹⁾
				/WH White
				/BL Black
				/BR Brass
				/AE Aegean Blue
				/RE Red
				/SV Silver
				/GU Gunmetal
				/NK Nickel
				/GR Gray

¹ (5) conductors cord only.

COLOR DETAILS

Additional colors may be available, consult factory.



SEE NEXT PAGE FOR CONTROL DETAILS

6CRDI LED 6.5" Compact Direct/Indirect Cylinder – Round

AVI-ON BLUETOOTH WIRELESS CONTROL DETAILS

FEATURES

- Simple**
- Gateway-free distributed control
 - Contractor friendly installation
 - Occupancy/vacancy/daylight sensing
- Scalable**
- Virtually unlimited network size
 - Spans small offices to large warehouses
 - Flexible control strategies
- Secure**
- Optional cloud connectivity
 - UL IoT platinum security rating
 - DLC 5.0 compliant

COMMISSIONING & INSTALLATION TOOLS

Avi-on mobile apps provide intuitive, quick installation and commissioning. Pro tools are available to qualified installers. Live commissioning training and on-site or remote support by Avi-on must be ordered separately through Avi-on.



Commissioning Mobile App

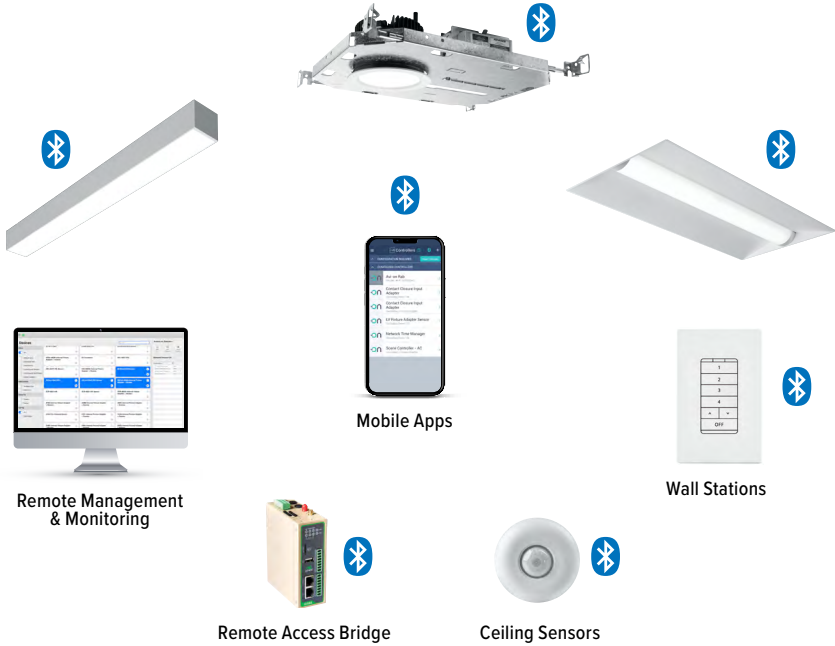


Zone Scanner Web App



Commissioning Pro App

SYSTEM COMPONENTS



The Bluetooth® word mark and logos are registered trademarks owned by Bluetooth SIG, Inc. and any use of such marks by Avi-on is under license. Other trademarks and trade names are those of their respective owners.

ACCESSORIES

WALL STATIONS	
AVI-B-2401AC-1	Scene controller - buttons numbered 1-4 and up/down/off, 120-277VAC
AVI-B-2402BAT-1	Scene controller - buttons numbered 1-4 and up/down/off, battery powered
AVI-B-2401AC-2	Dimmer with presets - buttons with percentages and up/down/off, 120-277VAC
AVI-B-2402BAT-2	Dimmer with presets - buttons with percentages and up/down/off, battery powered
AVI-B-2401AC-3	Two button control on/off or hold to dim up/down, 120-277VAC
AVI-B-2402BAT-3	Two button control on/off or hold to dim up/down, battery powered

NETWORK	
AVI-RAB-LTE	Remote access bridge
AVI-NTM	Network time manager with battery backup
CEILING MOUNT SENSORS	
AVI-KIT-SEN-DUCM	PIR motion and ultrasonic sensor kit
AVI-KIT-SEN-ICM	PIR motion and photocell sensor kit

For load controllers and additional accessory info, see hew.com/avi-on