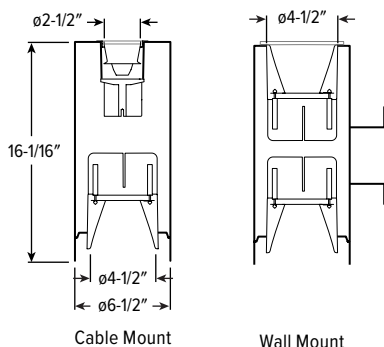


# 6CRDI tunable WHITE

## 6.5" Compact Direct/Indirect Cylinder – Round



CATALOG #: \_\_\_\_\_

TYPE: \_\_\_\_\_

PROJECT: \_\_\_\_\_



TrimLock®

ORDERING EXAMPLE: 6CRDI - TL - 16 - L22/8TWU/L22/8TWD - RDB - OPTIONS - WHT - CONTROL/DIM - UNV - LW/LM - CS - TRIM OPTIONS - CM

HOUSING TRIM MOUNT.

### HOUSING

SERIES	HEIGHT	LUMEN PACKAGE (Example: L22/8TWU/L13/8TWD)			REMOTE	OPTIONS
6CRDI - TL TrimLock	16 16"	Specify lumen packages: <b>U</b> for Uplight and <b>D</b> for Downlight			<b>RDB</b> Remote mount control/driver box, galvanized steel <sup>[1]</sup>	<b>EM/10WRM/RTS</b> Remote mount 10-watt emergency battery with regressed test switch <sup>[2]</sup>
		<b>LUMENS</b> <sup>[3]</sup>	<b>COLOR</b>	<b>U OR D</b>		
		<b>L13</b> 1,300lm	<b>8TW</b> Tunable white (80 CRI, 2700K-5000K) <sup>[4]</sup>	<b>U</b> Uplight		
		<b>L22</b> 2,200lm		<b>D</b> Downlight		
HOUSING FINISH <sup>[5]</sup>		CONTROL		DRIVER <sup>[6]</sup>		VOLTAGE
<b>ALUM</b>	Silver sparkle aluminum	See page 4 for CONTROL/DRIVER DETAILS.		<b>DALI</b>	Driver prewired for DALI applications	<b>UNV</b> 120-277V
<b>BLK</b>	Textured black	—	None	<b>DIM</b>	Dimming driver with (1) 0-10V signal to control dimming and (1) 0-10V signal to control CCT	
<b>BRZ</b>	Textured bronze	<b>AWNRL</b>	Lutron Athena wireless node integral fixture control, RF only <sup>[7]</sup>	<b>DMX</b>	Driver prewired for DMX applications <sup>[8]</sup>	
<b>NKL</b>	Textured nickel			<b>LD2</b>	Lutron DALI-2 digital driver, 1%	
<b>SLV</b>	Textured silver					
<b>WHT</b>	Textured white					

### TRIM

TRIM TYPE AND DISTRIBUTION	REFLECTOR FINISH <sup>[9]</sup>	TRIM OPTIONS
(Example Uplight/Downlight: LW/LM)		
TRIM TYPE	DISTRIBUTION	
Uplight	See page 2 for BEAM ANGLE.	
O	Open reflector with clear glass shield <sup>[12]</sup>	AD Diffuse acrylic lens <sup>[10]</sup>
L	Flush lens <sup>[13]</sup>	PD Diffuse 1/8" polycarbonate lens <sup>[11]</sup>
Downlight		
O	Open reflector	
F	Open reflector with frosted top diffuser	
L	Flush lens	
R	Regressed lens	
DOWNLIGHT OPEN TRIM TYPES	DOWNLIGHT LENS TRIM TYPES	
CS Clear semi-specular anodize	CS Clear semi-specular powder coat	
SG Satin-glow anodize	WH White texture powder coat	
GD Gold anodize	BL Black texture powder coat	
CG Champagne gold anodize	BZ Bronze texture powder coat	
PW Pewter anodize	NK Nickel texture powder coat	
SPC Clear specular anodize	SV Silver texture powder coat	
RG Rose gold anodize	AL Silver sparkle aluminum	
WH White texture powder coat		
BL Black texture powder coat		

### MOUNTING

MOUNTING TYPE <sup>[16]</sup>
CM___ Adjustable aircraft cable mount, 24", 48", 96", or 144" only, must specify. Example: 24" cable = CM24 <sup>[17]</sup>
WM Wall mount

### NOTES

- Painted driver box available, specify RDB/BLK or RDB/WHT.
- Max remote distance 50', including suspension length. Large remote box provided. Specify CEC in the option code when California Energy Commission regulations are required. See page 4 for EMERGENCY BATTERY DETAILS.
- Lumen output based on O Trim Type, W Distribution and CS Reflector Finish, 80CRI/4000K CCT. Actual performance may vary +/-5%, see page 2 for FIXTURE PERFORMANCE DATA.
- 90 CRI when specified with uplight CM Mounting Type.
- See page 3 for HOUSING FINISH DETAILS.
- See page 4 for CONTROL/DRIVER DETAILS.
- LD2 Driver only.
- Installed in remote box, must specify RDB Option.
- Specified for downlight Trim Type only. See page 4 for REFLECTOR FINISH DETAILS.
- Not available with O or F Trim Types. Downlight only. W Distribution only.
- Not available with O or F Trim Types. Downlight only. W Distribution only.
- CS Reflector Finish standard. Other colors available, consult factory.
- Not available with WM Mounting Type. Trim finish matches Housing Finish. Other colors available, consult factory.
- O Trim Type only when specified with WM Mounting Type.
- O Trim Type only.
- See page 5 for MOUNTING DETAILS.
- Canopy painted white unless specified otherwise. Must specify cord. See page 5 for CORD OPTIONS.



# 6CRDI tunable WHITE

## 6.5" Compact Direct/Indirect Cylinder – Round

### FEATURES

- Engineered to deliver great performance in a sleek, space-saving design
- Smoothly accent walls and eliminate dark ceilings with direct and indirect lighting
- Support human-centric design with adaptive, individualized lighting using tunable white light
- Parallel the performance and style of the Williams downlight collection
- Superior optical control with beams as narrow as 10° and field changeable optics as wide as 65°
- Complement the architectural elements of any space with a multitude of housing, trim and cord finishes
- Variety of cord colors available in standard or braided for custom design
- Low UGR meets LEED and WELL requirements
- Wireless in-fixture control solutions available
- Made Right Here® in the USA

### SPECIFICATIONS

- HOUSING** – Extruded aluminum with die-cast aluminum accent ring.
- FINISH** – Polyester powder coat bonded to phosphate-free, multi-stage pretreated metal. All parts painted after fabrication to facilitate installation, increase efficiency, and inhibit corrosion.
- TRIMLOCK** – Innovative TrimLock® reflector retention system ensures trim remains secure.
- OPEN REFLECTOR** – Low-iridescent anodized aluminum. Clear semi-specular finish standard.
- LENSED TRIM** – Die-cast aluminum frame with micro-prismatic lens (acrylic downlight, tempered glass uplight).
- ELECTRICAL** – High-performance Class 2 LED array. Modular quick-connect plug for easy field-connection of LED light assembly to driver. Reported L70>50,000 hours. Tunable White products use LEDs of multiple CCTs and may produce a perceptibly different shade of white from single-CCT products at the same CCT. All CCTs are within 3 MacAdam ellipses.
- MOUNTING** – Cable or wall mount. Indoor applications only. Control, driver, and EM battery installed in remote mount box.
- LISTINGS** –
  - cCSAus conforms to UL STD 1598 and UL STD 8750. Certified to CAN/CSA STD C22.2 No. 250.0. Suitable for dry and damp locations.
  - Build America, Buy America (BABA) and Buy American Act (BAA) compliant. Request certification at [hew.com/buy-american](http://hew.com/buy-american)
- WARRANTY** – 5-year limited warranty, see [hew.com/warranty](http://hew.com/warranty)

### FIXTURE PERFORMANCE DATA

DIST.	WATTAGE	DOWNLIGHT						UPLIGHT WALL MOUNT			UPLIGHT CABLE MOUNT				
		OPEN REFLECTOR		FLUSH LENS		REGRESSED LENS		OPEN REFLECTOR		WATTAGE	OPEN REFLECTOR		FLUSH LENS		WATTAGE
		DELIVERED LUMENS	EFFICACY (lm/W)	DELIVERED LUMENS	EFFICACY (lm/W)	DELIVERED LUMENS	EFFICACY (lm/W)	DELIVERED LUMENS	EFFICACY (lm/W)		DELIVERED LUMENS	EFFICACY (lm/W)	DELIVERED LUMENS	EFFICACY (lm/W)	
L13	W	14.6	1283	88	1029	70	1040	71	75	14.6	1088	75	18.3	868	47
	M	14.6	1281	88	1148	79	1149	79	74	14.6	1086	74	18.3	876	48
	N	14.6	1283	88	1175	80	1181	81	75	14.6	1088	75	18.3	671	37
L22	W	24.0	2289	95	1781	74	1799	75	81	24.0	1941	81	22.5	1068	47
	M	24.0	2198	92	2020	84	2026	84	78	24.0	1863	78	22.5	1078	48
	N	24.0	2097	87	2033	85	2043	85	74	24.0	1778	74	22.5	825	37

### MULTIPLIER TABLES

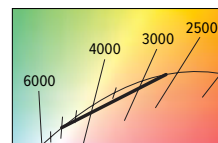
	COLOR TEMPERATURE			
	CCT	LUMENS		
		DOWNLIGHT	WALL	CABLE
80 CRI	2700K	0.83	0.83	–
	3000K	1.00	1.00	–
	3500K	0.99	0.99	–
	4000K	1.00	1.00	–
	5000K	0.98	0.98	–
90 CRI	2700K	–	–	0.87
	3000K	–	–	0.96
	3500K	–	–	1.02
	4000K	–	–	1.00
	5000K	–	–	1.02

TRIM OPTIONS	
CATALOG NUMBER	CONVERSION FACTOR
F	0.75
AD	0.85
PD	0.85

	REFLECTOR FINISH	
	CATALOG NUMBER	CONVERSION FACTOR
O TRIM	CS	1.00
	SG <sup>(1)</sup>	0.92
	GD	0.93
	CG	0.96
	PW	0.86
	SPC	1.02
	RG	0.88
	WH <sup>(1)</sup>	0.89
	BL <sup>(1)</sup>	0.47
R TRIM	WH	1.00
	CS <sup>(1)</sup>	0.98
	BL <sup>(1)</sup>	0.79
	BZ <sup>(1)</sup>	0.76
	NK <sup>(1)</sup>	0.81
	SV <sup>(1)</sup>	0.81
	AL <sup>(1)</sup>	0.86

### BEAM ANGLE

	TRIM TYPE <sup>(2)</sup>							
	DOWNLIGHT				WM UPLIGHT	CM UPLIGHT		
	O	F	L	R	O	O	L	
W	65°	60°	50°	50°	65°	70°	50°	
M	45°	50°	35°	30°	45°	40°	30°	
N	10°	25°	25°	25°	10°	15°	20°	



- Distribution will also be affected, consult factory.
- Beam angle based on CS or WH Reflector Finish.
  - Photometrics tested in accordance with IESNA LM-79. Results based on WH (L and R Trim Types) or CS (O Trim Type) Reflector Finish, W Distribution, 80 CRI/4000K CCT (90 CRI with uplight CM), average wattage for 120V input, and 25°C ambient temperature. Actual performance may vary +/-5%.
  - Wattage is for downlight or uplight components. Add wattages together for selected lumen packages to find total fixture wattage.
  - To calculate lumen output in emergency mode, multiply the battery wattage by the efficacy.
  - Use multiplier tables to calculate additional options.

PHOTOMETRY CONTINUED ON NEXT PAGE.

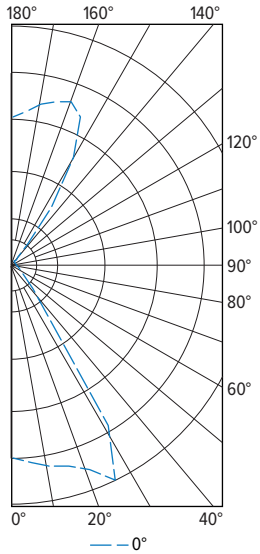


# 6CRDI tunable WHITE

## 6.5" Compact Direct/Indirect Cylinder – Round

### PHOTOMETRY

6CRDI-TL-16-L22/8TWU/L22/8TWD-DIM-UNV-OW/OW-CS-WM Total Luminaire Output: 4348 lumens; 48 Watts | Efficacy: 91 lm/W | 80 CRI; 4000K CCT

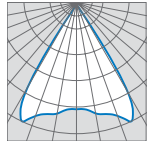


VERTICAL ANGLE	HORIZONTAL ANGLE	ZONAL LUMENS
	0°	
0	2067	
5	2129	205
15	2238	640
25	2548	1087
35	351	415
45	50	42
55	13	13
65	1	2
75	0	0
85	0	1
90	4	
95	4	5
105	6	7
115	10	10
125	21	20
135	66	71
145	693	437
155	1681	745
165	1744	495
175	1585	155
180	1520	

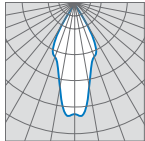
LUMEN SUMMARY	ZONE	LUMENS	% FIXTURE
	0 - 30	1932	44
	0 - 40	2347	54
	0 - 60	2401	55
	0 - 90	2404	55
	90 - 120	21	1
	90 - 150	549	13
	90 - 180	1944	45
	0 - 180	4348	100

### DOWNLIGHT

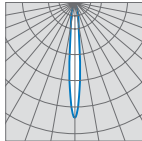
#### OPEN (O)



65° Wide

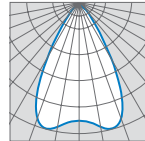


45° Medium

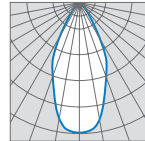


10° Narrow

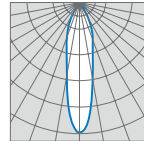
#### OPEN TOP DIFFUSER (F)



60° Wide

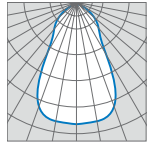


50° Medium

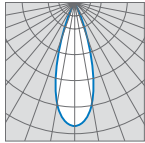


25° Narrow

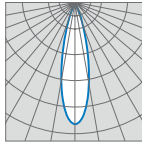
#### FLUSH (L)



50° Wide

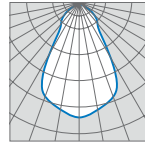


35° Medium

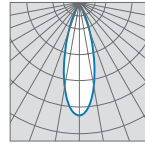


25° Narrow

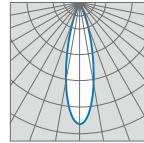
#### REGRESSED (R)



50° Wide



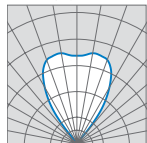
30° Medium



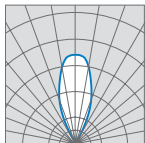
25° Narrow

### UPLIGHT CABLE MOUNT

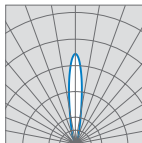
#### OPEN (O)



70° Wide

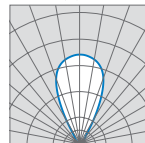


40° Medium

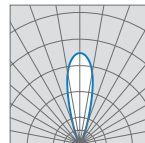


15° Narrow

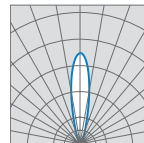
#### FLUSH (L)



50° Wide



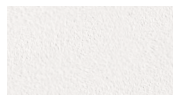
30° Medium



20° Narrow

### HOUSING FINISH DETAILS

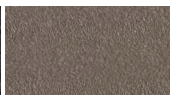
#### WHITE



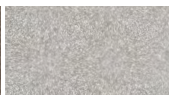
#### BLACK



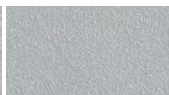
#### BRONZE



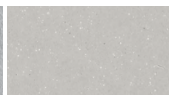
#### NICKEL



#### SILVER



#### ALUM



For custom color, please specify RAL code or a manufacturer code with description. All custom colors other than RAL require two sample swatches, minimum 1" square.



6CRDI

tunable WHITE

6.5" Compact Direct/Indirect Cylinder – Round

REFLECTOR FINISH DETAILS

Smooth Finish

SPC

SG

PW

GD

CG

RG

CS

AL

Textured Finish

WH

BL

BZ

NK

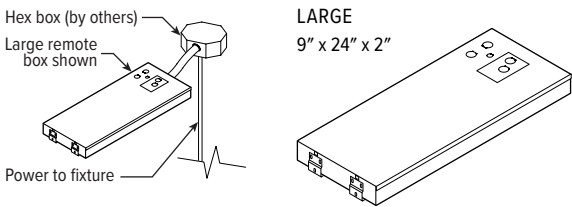
SV

CONTROL/DRIVER DETAILS

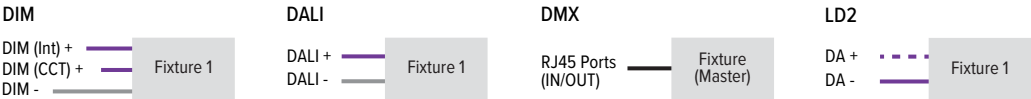
CONTROL/DRIVER	DESCRIPTION	RDB DETAILS BY LUMEN STOP		
		L13	L22	w/EM
DIM	Dimming driver with (1) 0-10V signal to control dimming and (1) 0-10V signal to control CCT prewired for low voltage applications	R   L	R   L	R   L
DMX	Driver prewired for DMX applications	R   L	R   L	R   L
DALI	DALI dimming driver	R   L	R   L	R   L
LD2	Lutron DALI-2 digital driver, 1%	R   L	R   L	R   L
AWNRLD2	Lutron Athena wireless node integral fixture control, RF only, for use with DALI-2 digital driver, 1%	R   L	R   L	R   L

REMOTE MOUNT DETAILS

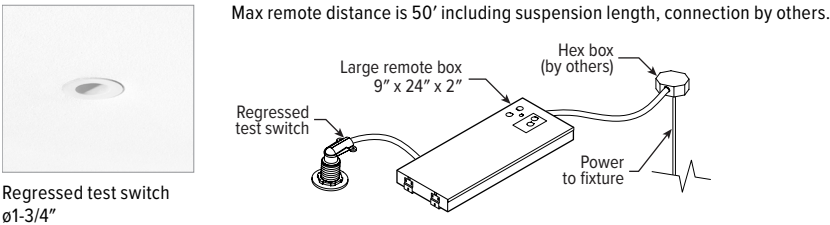
Max remote distance is 50', connection by others. Must be room-side accessible for maintenance.



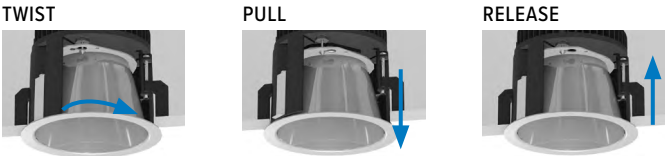
REMOTE MOUNT KEY	
R   L	RDB Required, Large Box



EMERGENCY BATTERY DETAILS



TRIMLOCK DETAILS



6CRDI

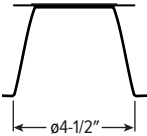
tunable WHITE

6.5" Compact Direct/Indirect Cylinder – Round

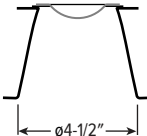
TRIM TYPE DETAILS

DOWNLIGHT

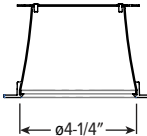
OPEN



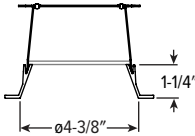
OPEN TOP DIFFUSER



FLUSH

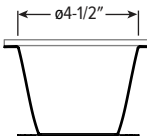


REGRESSED



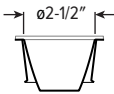
UPLIGHT WALL MOUNT

OPEN

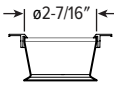


UPLIGHT CABLE MOUNT

OPEN

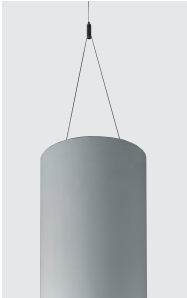


FLUSH



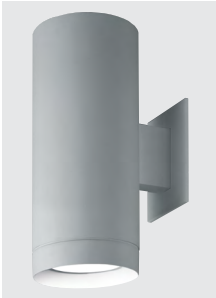
MOUNTING DETAILS

CABLE MOUNT (CM\_)

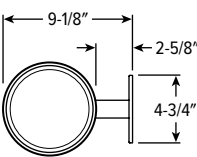


- Provided with:
- Adjustable length aircraft cable, must specify length in 24", 48", 96", or 144" inches.
  - 18-gauge cord, see Cord Options for ordering info.
  - One 5" canopy
  - T-bar clip with 1/4-20 stud
  - Hard ceiling anchor provided by others

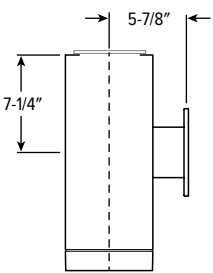
WALL MOUNT (WM)



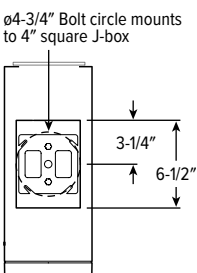
TOP VIEW



SIDE VIEW



BACK VIEW



CORD OPTIONS

Must specify cord when cable mounting.

ORDERING EXAMPLE: S2438/W				
CORD TYPE	LENGTH	# CONDUCTORS	WIRE SIZE	COLOR
S Straight	24 24" 48 48" 96 96"	3 3 4 4 5 5 6 6	8 18-gauge	Standard
				/W White
				/B Black
				Braided <sup>(1)</sup>
				/WH White
				/BL Black
				/BR Brass
				/AE Aegean Blue
				/RE Red
				/SV Silver
				/GU Gunmetal
				/NK Nickel
				/GR Gray

<sup>1</sup> (5) conductors cord only.

COLOR DETAILS

Additional colors may be available, consult factory.

