

CATALOG #: _____

TYPE: _____

PROJECT: _____



TrimLock® TwistLock™

ORDERING EXAMPLE: **6CR - TL - 16 - L31/RGB940 - RDB - OPTIONS - WHT - DMX - UNV - FW - CS - CM**
 HOUSING TRIM MOUNT.

HOUSING

SERIES	HEIGHT	LUMENS ^[1]	COLOR/CRI	CCT	REMOTE	OPTIONS	HOUSING FINISH ^[2]
6CR - TL TrimLock	16 16"	L31 3,100lm	RGB9 90	27 2700K 30 3000K 35 3500K 40 4000K	RDB Remote mount control/driver box, galvanized steel ^[3]	EM/10WRM/RTS Remote mount 10-watt emergency battery with regressed test switch ^[4] F Fuse	ALUM Silver sparkle aluminum BLK Textured black BRZ Textured bronze NKL Textured nickel SLV Textured silver WHT Textured white

CONTROL ^[5]	VOLTAGE
DMX DMX512/RDM	UNV 120-277V

TRIM

TRIM TYPE	DISTRIBUTION ^[6]	REFLECTOR FINISH ^[7]
F Open reflector with frosted top diffuser	W Wide 60° Open	CS Clear semi-specular powder coat
L Flush lens ^[8]	50° Flush	WH White texture powder coat ^[10]
R Regressed lens ^[9]	50° Regressed	BL Black texture powder coat
	M Medium 50° Open	
	N Narrow 25° Open	

MOUNTING

- MOUNTING TYPE ^[11]**
- CM__ Adjustable aircraft cable mount, 24", 48", 96", or 144" only, must specify. Example: 24" cable = **CM24** ^[12]
 - PM__ Pendant mount. Example: 24" pendant = **PM24** ^[13]
 - PC__ Power cord mount. Example: 24" cord = **PC24** ^[14]
 - SM TwistLock surface mount to octagonal J-box
 - WM Wall mount

NOTES

- ¹ Lumen output based on F Trim Type, W Distribution, CS Reflector Finish, 90 CRI/4000K CCT. Actual performance may vary +/-5%, see page 2 for FIXTURE PERFORMANCE DATA.
- ² See page 3 for HOUSING FINISH DETAILS.
- ³ Painted driver box available, specify RDB/BLK or RDB/WHT. See page 3 for REMOTE MOUNT DETAILS.
- ⁴ White output only in emergency mode. Max remote distance 50', including suspension length. Large remote box provided. Specify CEC in the option code when California Energy Commission regulations are required. See page 3 for REMOTE MOUNT DETAILS.
- ⁵ See page 3 for CONTROL DETAILS.
- ⁶ Beam angle based on F Trim Type and CS Reflector Finish. Trim Type affects beam angle. See page 2 for FIXTURE PERFORMANCE DATA.
- ⁷ See page 3 for REFLECTOR FINISH DETAILS.
- ⁸ W Distribution only.
- ⁹ W Distribution only.
- ¹⁰ W Distribution only.
- ¹¹ See page 4 for MOUNTING DETAILS.
- ¹² Canopy painted white unless specified otherwise. Must specify cord. See page 4 for CORD OPTIONS.
- ¹³ Specify length in 1" increments, minimum 6". Canopy and pendant match fixture housing color unless specified otherwise.
- ¹⁴ 48" and 96" lengths available. Canopy painted white unless specified otherwise. Must specify cord. See page 4 for CORD OPTIONS.



6CR tunable **RGBW** 6.5" Cylinder – Round

FEATURES

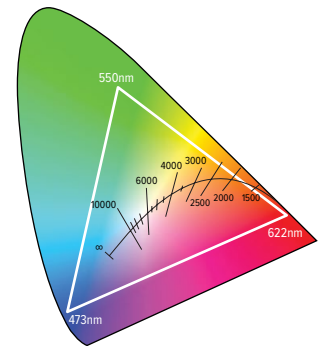
- Create rich, vibrant designs with lasting visual impact using the full visible light spectrum
- Superior optical control with beams as narrow as 25° and field changeable optics as wide as 60°
- Complement the architectural elements of any space with a multitude of housing, trim and cord finishes
- Limitless application opportunities via pendant, cable, power cord, wall and ceiling mounts
- Ensure a simple and secure installation with TwistLock™ surface mount technology
- Precision-engineered extruded aluminum housing and die-cast aluminum trim face for clean aesthetic
- Variety of cord colors available in standard or braided for custom design
- Low UGR meets LEED and WELL requirements
- Made Right Here® in the USA

SPECIFICATIONS

- **HOUSING** – Extruded aluminum with die-cast aluminum accent ring.
- **FINISH** – Polyester powder coat bonded to phosphate-free, multi-stage pretreated metal. All parts painted after fabrication to facilitate installation, increase efficiency, and inhibit corrosion.
- **TRIMLOCK** – Innovative TrimLock® reflector retention system ensures trim remains secure.
- **OPEN REFLECTOR** – Low-iridescent anodized aluminum with top diffuser. Clear semi-specular finish standard.
- **LENSED TRIM** – Die-cast aluminum frame with micro-prismatic, acrylic lens.
- **ELECTRICAL** – High-performance Class 2 CSP RGBW LED array. Modular quick-connect plug for easy field-connection of LED light assembly to driver. Reported L70>60,000 hours (all colors). Reported L90: Red: >23,000 hours, Green: >44,000 hours, Blue: >60,000 hours, White: >48,000 hours
- **CONTROL** – DMX enabled; controllers provided by others.
- **MOUNTING** – Surface, cable, pendant, power cord, or wall mount. Indoor applications only. Max weight 9-1/2 lbs. Control and EM battery installed in remote mount box.
- **LISTINGS** –
 - cCSAus conforms to UL STD 1598 and UL STD 8750. Certified to CAN/CSA STD C22.2 No. 250.0. Suitable for dry and damp locations.
 - Build America, Buy America (BABA) and Buy American Act (BAA) compliant. Request certification at hew.com/buy-american
- **WARRANTY** – 5-year limited warranty, see hew.com/warranty

FIXTURE PERFORMANCE DATA

		F TRIM TYPE (CS REFLECTOR FINISH)									
		WHITE LED ONLY			RED ONLY		GREEN ONLY		BLUE ONLY		
	DISTRIBUTION	WATTAGE	DELIVERED LUMENS	EFFICACY (lm/W)	WATTAGE	MAX COLOR LUMENS	WATTAGE	MAX COLOR LUMENS	WATTAGE	MAX COLOR LUMENS	
L31	W	55.4	3098	56	17.9	206	14.4	1090	18.2	327	
	M	55.4	3219	58	17.9	214	14.4	1132	18.2	340	
	N	55.4	2907	53	17.9	201	14.4	1063	18.2	319	



MULTIPLIER TABLES

COLOR TEMPERATURE	
CCT	CONVERSION FACTOR
2700K	0.92
3000K	0.94
3500K	0.96
4000K	1.00

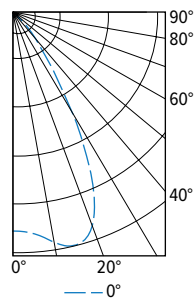
REFLECTOR FINISH	CONVERSION FACTOR	
	CATALOG NUMBER	CONVERSION FACTOR
O TRIM	CS	1.00
	WH ⁽¹⁾	0.89
	BL ⁽¹⁾	0.47
R TRIM	WH	1.00
	CS ⁽¹⁾	0.98
	BL ⁽¹⁾	0.79

TRIM OPTIONS	
CATALOG NUMBER	CONVERSION FACTOR
F	1.00
L	0.76
R	0.74

- Distribution will also be affected, consult factory.
- Photometrics tested in accordance with IESNA LM-79. Results based on F Trim Type, W Distribution, CS Reflector Finish, 90 CRI/4000K CCT, wattage for 120V input, and 25°C ambient temperature. Actual performance may vary +/-5%.
- To calculate lumen output in emergency mode, multiply the battery wattage by the efficacy.
- Use multiplier tables to calculate additional options.

PHOTOMETRY

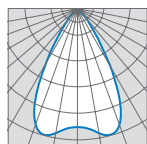
6CR-TL-16-L31/RGB940-DMX-UNV-FW-OF-CS (White Only) Total Luminaire Output: 3098 lumens; 55.4 Watts | Efficacy: 56 lm/W | 90 CRI; 4000K CCT



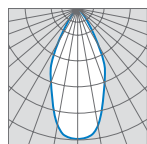
VERTICAL ANGLE	HORIZONTAL ANGLE		ZONAL LUMENS
	0°		
0	2942		
5	2993		291
15	3248		906
25	2499		1107
35	864		563
45	250		196
55	23		28
65	6		6
75	1		1
85	0		0
90	0		0

LUMEN SUMMARY	ZONE	LUMENS	% FIXTURE
	0 - 40	2866	93
	0 - 60	3090	100
	0 - 90	3098	100
	0-180	3098	100

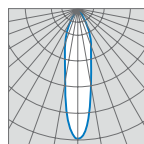
OPEN



60° Wide

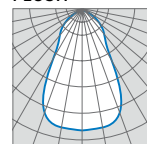


50° Medium



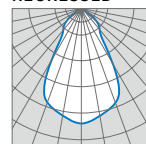
25° Narrow

FLUSH



50° Wide

REGRESSED



50° Wide



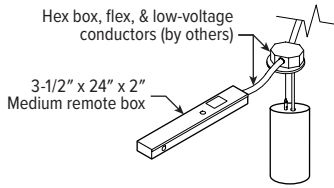
6CR tunable **RGBW** 6.5" Cylinder – Round

REMOTE MOUNT DETAILS

Max remote distance 50', including suspension length.

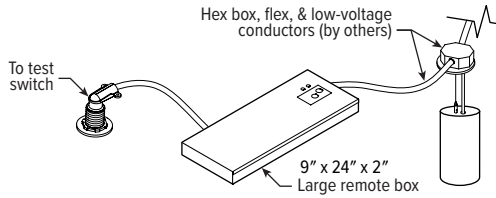
CONTROL

Medium remote box provided when specified without EM battery.

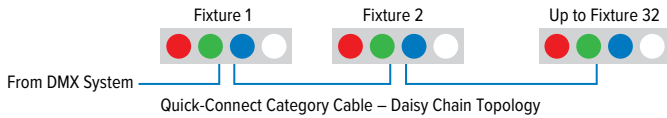


EMERGENCY BATTERY

Large remote box provided.



CONTROL DETAILS



Note: Fixtures ship with DMX starting address of 1. (Red: 1, Green: 2, Blue: 3, White: 4). Terminator resistor (by others) is recommended at the end of each DMX run.

See DMX/RDM System Overview for details: hew.com/dmx-rdm

TRIMLOCK DETAILS

TWIST



PULL

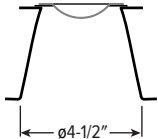


RELEASE

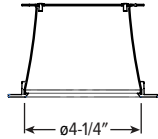


TRIM TYPE DETAILS

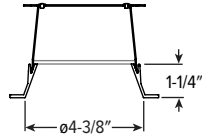
OPEN



FLUSH

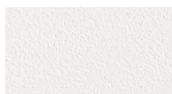


REGRESSED

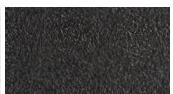


HOUSING FINISH DETAILS

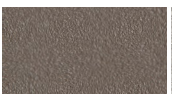
WHITE



BLACK



BRONZE



NICKEL



SILVER



ALUM



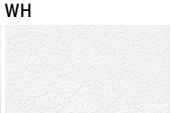
For custom color, please specify RAL code or a manufacturer code with description. All custom colors other than RAL require two sample swatches, minimum 1" square.

REFLECTOR FINISH DETAILS

Smooth Finish



Textured Finish



BL



MOUNTING DETAILS

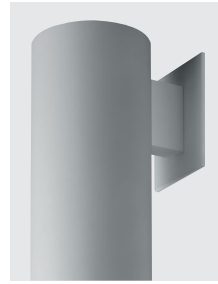
PENDANT MOUNT (PM__)



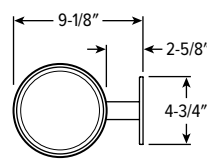
Provided with:

- 38° Swivel canopy
- 3/8" IPS Threaded stem
- Specify length of stem, 6" minimum, 24" default length

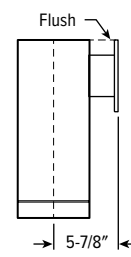
WALL MOUNT (WM)



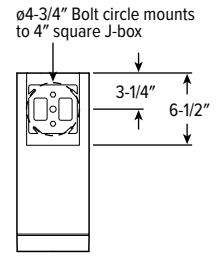
TOP VIEW



SIDE VIEW



BACK VIEW



SURFACE MOUNT (SM)



TwistLock™

Simple lift-and-twist mounting secures fixture to J-box.

CABLE MOUNT (CM__)



Provided with:

- Adjustable length aircraft cable, must specify length in 24", 48", 96", or 144" inches.
- 18-gauge cord, see Cord Options for ordering info.
- One 5" canopy
- T-bar clip with 1/4-20 stud
- Hard ceiling anchor provided by others

POWER CORD MOUNT (PC)



Provided with:

- 18-gauge cord, see Cord Options for ordering info.
- One 5" canopy
- Power cord mounting adaptor

CORD OPTIONS

Must specify cord when cable and power cord mounting.

ORDERING EXAMPLE: S2438/W				
CORD TYPE	LENGTH	# CONDUCTORS	WIRE SIZE	COLOR
S Straight	24 24"	3 3	8 18-gauge	Standard
	48 48"	4 4		/W White
	96 96"	5 5		/B Black
		6 6		Braided¹
				/WH White
				/BL Black
				/BR Brass
				/AE Aegean Blue
				/RE Red
				/SV Silver
				/GU Gunmetal
				/NK Nickel
				/GR Gray

¹ (5) conductors cord only.

COLOR DETAILS

Additional colors may be available, consult factory.

