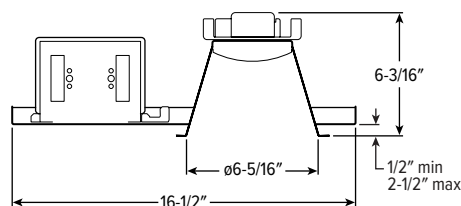


6LDR LED

6" Lite Downlight – Round



CATALOG #: _____

TYPE: _____

PROJECT: _____



NEW CONSTRUCTION AND REMODEL

FEATURES

- Simple and quick installation in new construction or remodel applications
- Rated for direct contact with insulation up to L20 lumen package
- Heavy-duty mounting springs secure fixture
- Maximize energy savings with efficacies up to 120 lm/W
- Top diffuser in trim enhances uniformity and minimizes glare
- Low UGR meets LEED and WELL requirements
- Made Right Here® in the USA

SPECIFICATIONS

- HEAT SINK** – Aluminum.
- TRIM** – Low-iridescent anodized aluminum with 1/2" standard flange and diffuse polycarbonate lens at top of open reflector. Semi-specular finish standard.
- ELECTRICAL** – High-quality mid-power LED boards. L70 >70,000 hours. 25°C max ambient operating temperature. 50/60 Hz constant current driver.
- MOUNTING** – Recessed. 20 ga. galvanized steel mounting pan for new construction. Remodel kit option includes receiver bracket hardware. Compatible with ø6-1/2" ceiling cutout. Heavy-duty mounting springs accommodate ceiling thicknesses from 1/2" - 2-1/2". Provided with 15" plenum-rated cable. New construction mounting pan accessory available. For remodel installations, the minimum plenum height from the top of 5/8" sheetrock is 7-1/4". Weight 2.25 lbs.
- LISTINGS** –
 - cETLus listed as LED luminaire suitable for dry or damp locations.
 - Conforms to UL STD.1598. Certified to CSA STD.C22.2 No.250.0.
 - Suitable for wet location under covered ceiling.
 - IC-rated for direct contact with insulation standard (must specify I mounting for L30 lumen stop).
 - City of Chicago Environmental Air approved when specified with CP option.
 - Complies with ASTM-E283 when specified with ATH option.
 - Build America, Buy America (BABA) and Buy American Act (BAA) compliant. Request certification at hew.com/buy-american
- WARRANTY** – 5-year limited warranty, see hew.com/warranty

ORDERING EXAMPLE: 6LDR - L20/835 - CS - OPTIONS - DIM - UNV - N - F1

HOUSING

| SERIES | LUMENS ^[1] | CRI | CCT | REFLECTOR FINISH |
|--------|----------------------------|------|----------|----------------------------------------------------------------------------------------|
| 6LDR | L10 1,000lm | 8 80 | 30 3000K | CS Clear semi-specular anodize, 58° beam angle |
| | L15 1,500lm | 9 90 | 35 3500K | WH White texture powder coat, 69° beam angle |
| | L20 2,000lm | | 40 4000K | BLK Black texture powder coat, 63° beam angle |
| | L30 3,000lm ^[2] | | | CS-MWT Clear semi-specular anodize with smooth matte white trim flange, 64° beam angle |

OPTIONS ^[3]

| | |
|------------|--------------------------------------------------------------------|
| EM/10W | 10-watt emergency battery |
| EM/10W/ITS | 10-watt emergency battery with integral test switch ^[4] |
| ATH | Airtight construction ^[5] |
| CP | Chicago plenum (CCEA) ^[6] |

DRIVER

| | |
|----------|-------------------------------------------------------|
| DIM | Driver with external 0-10V dimming wires |
| DIM1 | 1 % Driver with external 0-10V dimming wires |
| DIM LINE | Driver with line voltage dimming wires ^[7] |

VOLTAGE

| | |
|-----|----------|
| UNV | 120-277V |
| 347 | 347V |

MOUNTING ^[8]

| | |
|-------|----------------------------------------------------------------------------------------------------------------------------------|
| N-F1 | New construction mounting pan with integral 2-position fixed bracket, universal bar hangers. |
| N-F1S | New construction mounting pan and junction box shipped ahead, integral 2-position fixed bracket, universal bar hangers included. |
| I-F1 | IC-rated enclosure for new construction with integral 2-position fixed bracket, universal bar hangers. ^[9] |
| R | Remodel kit ^[10] |

NOTES

- Lumens based on CS Reflector Finish and 80 CRI/3500K CCT. Actual performance may vary +/-5%. See page 2 for FIXTURE PERFORMANCE DATA.
- Must specify I Mounting for IC-rated listing.
- All EM batteries are CEC compliant.
- Extended lead times may apply. Consult factory for availability.
- Must specify I Mounting.
- Must specify I Mounting.
- Not available with L10 lumen package.
- See page 3 for MOUNTING HARDWARE ACCESSORIES DETAILS.
- Not available with EM batteries. I Mounting requires external brackets.
- Also used in new construction sheetrock ceilings. Pan-less installation.



6LDR LED

6" Lite Downlight – Round

FIXTURE PERFORMANCE DATA

| | DELIVERED LUMENS | WATTAGE | EFFICACY (lm/W) |
|-----|------------------|---------|-----------------|
| L10 | 1025 | 9.3 | 110 |
| L15 | 1552 | 13.8 | 112 |
| L20 | 2040 | 17.0 | 120 |
| L30 | 3047 | 26.0 | 117 |

MULTIPLIER TABLES

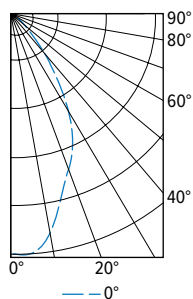
| COLOR TEMPERATURE | | |
|-------------------|-------|-------------------|
| | CCT | CONVERSION FACTOR |
| 80 CRI | 3000K | 0.98 |
| | 3500K | 1.00 |
| | 4000K | 1.01 |
| 90 CRI | 3000K | 0.79 |
| | 3500K | 0.82 |
| | 4000K | 0.84 |

| REFLECTOR FINISH | |
|------------------|-------------------|
| CATALOG NUMBER | CONVERSION FACTOR |
| CS | 1.00 |
| WH | 0.89 |
| BL | 0.47 |
| CS-MWT | 1.00 |

- Photometrics tested in accordance with IESNA LM-79. Results based on CS Reflector Finish, 80 CRI/3500K CCT, wattage for 120V input, and 25°C ambient temperature. Actual performance may vary +/-5%.
- To calculate lumen output in emergency mode, multiply the battery wattage by the efficacy.
- Use multiplier tables to calculate additional options.

PHOTOMETRY

6LDR-L20/835-CS-DIM-UNV Total Luminaire Output: 2040 lumens; 17 Watts | Efficacy: 120 lm/W | 80 CRI; 3500K CCT



| CANDLEPOWER DISTRIBUTION | VERTICAL ANGLE | HORIZONTAL ANGLE | ZONAL LUMENS |
|--------------------------|----------------|------------------|--------------|
| | | 0° | |
| | 0 | 2251 | |
| | 5 | 2248 | 209 |
| | 15 | 1780 | 501 |
| | 25 | 1354 | 613 |
| | 35 | 750 | 467 |
| | 45 | 264 | 211 |
| | 55 | 23 | 36 |
| | 65 | 2 | 2 |
| | 75 | 0 | 1 |
| | 85 | 0 | 0 |
| | 90 | 0 | |

| LUMEN SUMMARY | ZONE | LUMENS | % FIXTURE |
|---------------|---------|--------|-----------|
| | 0 - 30 | 1323 | 65 |
| | 0 - 40 | 1790 | 88 |
| | 0 - 60 | 2037 | 100 |
| | 0 - 90 | 2040 | 100 |
| | 0 - 180 | 2040 | 100 |

REFLECTOR FINISH DETAILS

WH



CS



BLK



CS-MWT



EMERGENCY BATTERY DETAILS

TEST SWITCH DETAILS



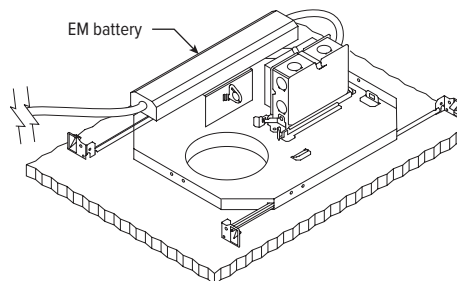
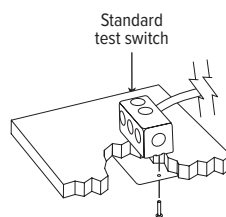
Integral



Standard
2-3/4" x 4-1/2"

MOUNTING DETAILS

Max remote distance is 50', connection by others.



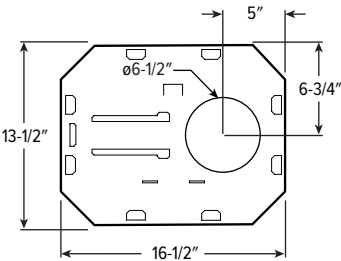
6LDR LED 6" Lite Downlight – Round

MOUNTING HARDWARE ACCESSORIES DETAILS

Flex conduit is recommended for installation.

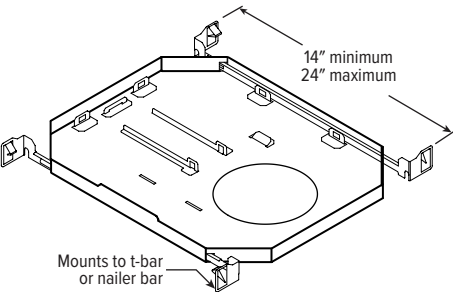
NEW CONSTRUCTION

PAN DIMENSIONS



Ceiling Cutout: $\phi 6-1/2"$

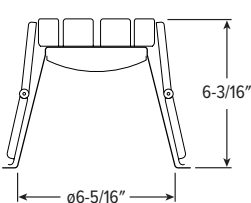
MOUNTING HARDWARE



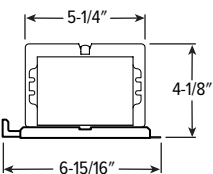
REMODEL

H.E. Williams Inc. strongly recommends installing a trial fixture to confirm fitment on-site prior to ordering full project quantities.

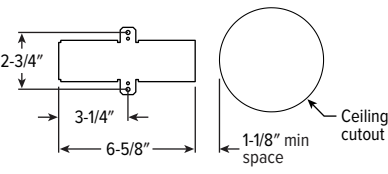
CROSS SECTION



DRIVER & JUNCTION BOX

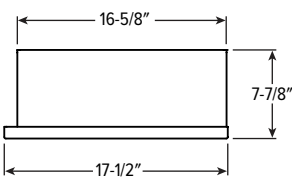


RECEIVER BRACKET

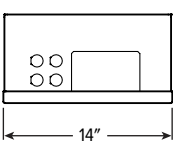


IC-RATED ENCLOSURE

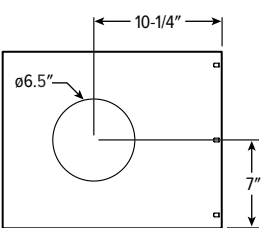
SIDE VIEW



FRONT VIEW



PAN DIMENSIONS



MOUNTING HARDWARE

