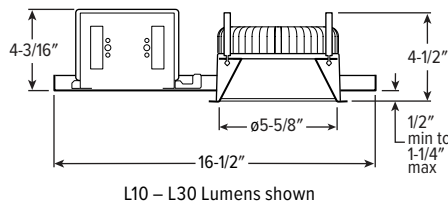


# 6PR<sup>LED</sup> 6" Shallow Plenum Downlight – Round



L10 – L30 Lumens shown

CATALOG #: \_\_\_\_\_

TYPE: \_\_\_\_\_

PROJECT: \_\_\_\_\_

## NEW CONSTRUCTION AND REMODEL



ORDERING EXAMPLE: **6PR - TL - L20/835 - OPTIONS - CONTROL/DIM - UNV - LW - OF - WH - TRIM OPTIONS - N - F1**

## HOUSING

SERIES	LUMENS <sup>[1]</sup>	CRI	CCT	OPTIONS	CONTROL	DRIVER	VOLTAGE
<b>6PR - TL</b>	<b>L10</b> 1,000lm <sup>[2]</sup>	<b>8</b> 80	<b>27</b> 2700K	See page 3 for <b>EMERGENCY BATTERY OPTIONS</b> .	See page 6 for <b>ADDITIONAL CONTROL/DRIVER OPTIONS</b> .	See page 6 for <b>ADDITIONAL CONTROL/DRIVER OPTIONS</b> .	<b>UNV</b> 120-277V
TrimLock	<b>L15</b> 1,500lm	<b>9</b> 90 <sup>[3]</sup>	<b>30</b> 3000K	See page 3 for <b>APERTURE ADAPTOR ORDERING INFO</b> .	– None	<b>DIM</b> Dimming driver, 0-10V	<b>347</b> 347V <sup>[9]</sup>
	<b>L20</b> 2,000lm		<b>35</b> 3500K	<b>ATH</b> Airtight construction	<b>AVI-LVFA</b> Avi-on wireless fixture control <sup>[6]</sup>	<b>DIM1</b> 1% Dimming driver, 0-10V	
	<b>L30</b> 3,000lm		<b>40</b> 4000K	<b>CP</b> Chicago plenum (CCEA) <sup>[4]</sup>	<b>AWNRR</b> Lutron Athena wireless node integral fixture control, RF only <sup>[7]</sup>	<b>DA</b> Driver with 12V auxiliary power, without external dimming wires <sup>[8]</sup>	
	<b>L40</b> 4,000lm		<b>50</b> 5000K	<b>F</b> Fuse kit			
	<b>L50</b> 5,000lm			<b>SDT</b> Stepdown transformer <sup>[5]</sup>			
	<b>L60</b> 6,000lm						
	<b>L70</b> 7,000lm						

## TRIM<sup>[10]</sup>

TRIM TYPE	DISTRIBUTION <sup>[11]</sup>	FLANGE TYPE	REFLECTOR FINISH	TRIM OPTIONS
<b>L</b> Flush lens	<b>W</b> 85° Wide	<b>OF</b> 1/2" standard flange	<b>CS</b> Clear semi-specular powder coat	<b>IP</b> IP65 rated trim
<b>A</b> Angled lens <sup>[12]</sup>	<b>M</b> 35° Medium <sup>[14]</sup>	<b>SF</b> 1/4" mud-in flange <sup>[16]</sup>	<b>WH</b> White texture powder coat	<b>AD</b> Diffuse acrylic lens <sup>[17]</sup>
<b>S</b> Non-conductive flush lens for shower applications <sup>[13]</sup>	<b>N</b> 25° Narrow <sup>[15]</sup>		<b>BL</b> Black texture powder coat	<b>PD</b> Diffuse 1/8" polycarbonate lens <sup>[18]</sup>
				<b>WET/CC</b> Wet location, covered ceiling listed
				<b>AM</b> Anti-microbial <sup>[19]</sup>

## MOUNTING

### MOUNTING TYPE<sup>[20]</sup>

- N** Open pan for new construction
- I** IC-rated enclosure for new construction<sup>[22]</sup>
- R** Remodel kit<sup>[23]</sup>

### MOUNTING HARDWARE<sup>[21]</sup>

- F1** Integral 2-position fixed pan bracket, universal bar hanger included<sup>[24]</sup>
- BA1** Adjustable butterfly pan bracket, bar hanger not included<sup>[25]</sup>
- CA1** Adjustable caterpillar pan bracket, universal bar hanger included<sup>[26]</sup>

## NOTES

- <sup>1</sup> Lumen output based on L Trim Type, W Distribution and WH Reflector Finish, 80 CRI/3500K CCT. Actual performance may vary +/-5%. See page 2 for FIXTURE PERFORMANCE DATA.
- <sup>2</sup> Not available with EM/10W emergency batteries.
- <sup>3</sup> Extended lead times may apply. Consult factory for availability.
- <sup>4</sup> I Mounting Type required.
- <sup>5</sup> May be required for 347V, see product builder at [hew.com/product-builder](http://hew.com/product-builder)
- <sup>6</sup> DA Driver only. See page 6 for AVI-ON BLUETOOTH WIRELESS CONTROL DETAILS.
- <sup>7</sup> DA Driver only.
- <sup>8</sup> Avi-on and Lutron Athena Controls only.
- <sup>9</sup> Not available with EM batteries, DA or DMX Drivers.
- <sup>10</sup> Trim ships separately.
- <sup>11</sup> Beam angle based on WH Reflector Finish and L Trim Type.
- <sup>12</sup> W Distribution only. AD Trim Option standard.
- <sup>13</sup> W Distribution, OF Flange Type, and WH Reflector Finish only. AD, IP and WET/CC Trim Options standard.
- <sup>14</sup> Not available with L50 lumen package or higher.
- <sup>15</sup> Not available with L50 lumen package or higher.
- <sup>16</sup> For use with mud-in plaster construction only, supplied with mud flange installation kit. See page 4 for FLANGE TYPE DETAILS. Not available with ATH or IP Options.
- <sup>17</sup> L Trim Type only. W Distribution only.
- <sup>18</sup> W Distribution only.
- <sup>19</sup> WH and BL Reflector Finishes only. Not available with S Trim Type.
- <sup>20</sup> Mounting hardware required (N and I only), ordered separately, see MOUNTING HARDWARE ordering info. See page 5 for MOUNTING TYPE DETAILS.
- <sup>21</sup> Additional mounting hardware options available. See page 5 for MOUNTING HARDWARE DETAILS.
- <sup>22</sup> L30 lumen package max. Not available with EM batteries.
- <sup>23</sup> Also used in new construction sheetrock ceilings. Pan-less installation.
- <sup>24</sup> N and I Mounting Types only. I Mounting requires external brackets.
- <sup>25</sup> N Mounting Type only.
- <sup>26</sup> N Mounting Type only.



# 6PR LED 6" Shallow Plenum Downlight – Round

## FEATURES

- Innovative TrimLock reflector retention system ensures trim remains flush with ceiling plane
- Beam angles ranging from 25° narrow to 85° wide for tailored performance
- Die-cast trim with flush or angled lens provides glare-free illumination for a soft ceiling appearance
- New construction mounting pan, IC-rated, or pan-less remodel kit available
- Contemporary design provides glare-free illumination for a soft ceiling appearance
- Industry-leading efficacies as high as 106 lm/Wv
- Fully room-side accessible
- Low UGR meets LEED and WELL requirements
- Wireless in-fixture control solutions available
- Made Right Here® in the USA

## SPECIFICATIONS

- HOUSING** – Spun housing with forged aluminum heat sink. Galvanized steel splice compartment with driver mounting plate/enclosure. Mounting clips allow for ceiling thickness from 1/2"– 1-1/4" (consult factory for additional ceiling thicknesses).
- TRIMLOCK** – Innovative TrimLock reflector retention system ensures the trim remains flush with the ceiling plane.
- LENSED TRIM** – Die-cast aluminum frame with micro-prismatic, acrylic lens.
- ELECTRICAL** – High-performance Class 2 C.O.B. LED array. Modular quick-connect plug for easy field-connection of LED light assembly to driver. Reported L70>55,000 hours. Reported L90>55,000 hours. Estimated L70 = 200,000 hours.
- MOUNTING** – Recessed. 20 ga. galvanized steel mounting pan for new construction or IC-rated enclosure. Remodel kit option includes receiver bracket hardware. Minimum 24" O.C. marked spacing required for L50 - L70 lumen packages.

## LISTINGS –

- cCSAus conforms to UL STD 1598; Certified to CAN/CSA STD C22.2 No. 250.0 for dry and damp locations. LED light assembly conforms to UL 2108 for remote installation.
- Suitable for wet location under covered ceiling when specified with WET/CC option.
- IC-rated for direct contact with insulation when specified with I Mounting Type.
- City of Chicago Environmental Air approved when specified with CP option.
- IP65 rated trim when specified with IP option.
- Complies with ASTM-E283 when specified with ATH option.
- RoHS compliant.
- Complies with the Buy American Act and other federal regulations. Request certification at [hew.com/buy-american](http://hew.com/buy-american)
- WARRANTY** – 5-year limited warranty, see [hew.com/warranty](http://hew.com/warranty)

## FIXTURE PERFORMANCE DATA

	DISTRIBUTION	DELIVERED LUMENS	WATTAGE	EFFICACY (lm/W)
L10	W	1111	10.7	104
	M	1127	10.7	105
	N	1137	10.7	106
L15	W	1696	16.6	102
	M	1720	16.6	104
	N	1736	16.6	105
L20	W	2208	22.7	97
	M	2239	22.7	99
	N	2260	22.7	100
L30	W	3293	33.2	99
	M	3309	33.2	100
	N	3224	33.2	97
L40	W	4394	44.1	100
	M	4415	44.1	100
	N	4302	44.1	98
L50	W	5503	54.7	101
	M	–	–	–
	N	–	–	–
L60	W	6010	68.2	88
	M	–	–	–
	N	–	–	–
L70	W	7023	78.2	90
	M	–	–	–
	N	–	–	–

## MULTIPLIER TABLES

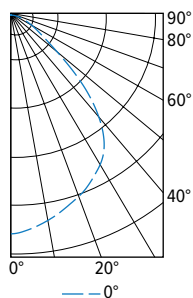
COLOR TEMPERATURE	
CCT	CONVERSION FACTOR
80 CRI	2700K 0.92
	3000K 0.98
	3500K 1.00
	4000K 1.01
	5000K 1.02
90 CRI	2700K 0.76
	3000K 0.79
	3500K 0.82
	4000K 0.84
	5000K 0.88

TRIM OPTIONS	
CATALOG NUMBER	CONVERSION FACTOR
S	0.85
AD	0.85
PD	0.85

- Photometrics tested in accordance with IESNA LM-79. Results based on L Trim Type, WH Reflector Finish, W Distribution, 80 CRI/3500K CCT, average wattage for 120V input, and 25°C ambient temperature. Actual performance may vary +/-5%
- To calculate lumen output in emergency mode, multiply the battery wattage by the efficacy.
- Use multiplier tables to calculate additional options.

## PHOTOMETRY

6PR-TL-L20/835-DIM-UNV-LW-OF-WH Report #: 12326812.29; 06/08/18 | Total Luminaire Output: 2208 lumens; 22.7 Watts | Efficacy: 97.3 lm/W | 81.8 CRI; 3647K CCT



CANDLEPOWER DISTRIBUTION	VERTICAL ANGLE	HORIZONTAL ANGLE	ZONAL LUMENS
		0°	
	0	1169	
	5	1148	81
	15	1075	174
	25	989	243
	35	859	267
	45	556	183
	55	223	86
	65	111	47
75	51	21	
85	12	3	
90	1		

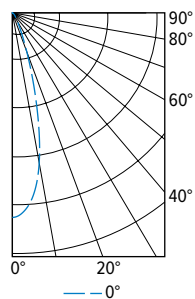
LUMEN SUMMARY	ZONE	LUMENS	% FIXTURE
	0 - 40	1399	64
	0 - 60	2029	92
	0 - 90	2208	100
	0 - 180	2208	100

PHOTOMETRY CONTINUED ON NEXT PAGE.



# 6PR LED 6" Shallow Plenum Downlight – Round

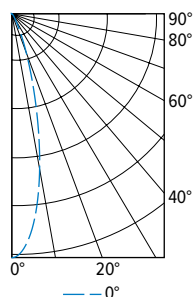
6PR-TL-L20/835-DIM-UNV-LM-OF-WH Report #: 12326812.31; 06/08/18 | Total Luminaire Output: 2239 lumens; 22.7 Watts | Efficacy: 98.8 lm/W | 81.7 CRI; 3644K CCT



CANDLEPOWER DISTRIBUTION	VERTICAL ANGLE	HORIZONTAL ANGLE 0°	ZONAL LUMENS
	0	5151	
	5	4950	333
	15	3241	421
	25	1025	188
	35	304	80
	45	134	46
	55	70	27
	65	36	15
	75	17	7
	85	3	1
	90	0	

LUMEN SUMMARY	ZONE	LUMENS	% FIXTURE
	0 - 40	2013	90
	0 - 60	2182	97
	0 - 90	2239	100
	0 - 180	2239	100

6PR-TL-L20/835-DIM-UNV-LN-OF-WH Report #: 12326812.32; 06/08/18 | Total Luminaire Output: 2260 lumens; 22.7 Watts | Efficacy: 99.7 lm/W | 81.6 CRI; 3629K CCT



CANDLEPOWER DISTRIBUTION	VERTICAL ANGLE	HORIZONTAL ANGLE 0°	ZONAL LUMENS
	0	8348	
	5	7547	466
	15	3235	381
	25	771	137
	35	212	57
	45	107	38
	55	66	27
	65	37	16
	75	16	7
	85	3	1
	90	0	

LUMEN SUMMARY	ZONE	LUMENS	% FIXTURE
	0 - 40	2060	91
	0 - 60	2203	98
	0 - 90	2260	100
	0 - 180	2260	100

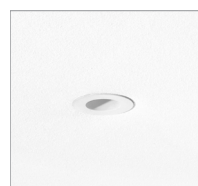
## EMERGENCY BATTERY OPTIONS

Additional limitations apply, see page 1. Specify CEC in the option code when California Energy Commission regulations are required.

CATALOG NUMBER	DESCRIPTION
EM/7W	7-watt emergency battery <sup>[1]</sup>
EM/7W/RTS	7-watt emergency battery with regressed test switch <sup>[2]</sup>
EM/7W/IPRTS	7-watt emergency battery with IP65 rated regressed test switch <sup>[3]</sup>
EM/10W	10-watt emergency battery <sup>[1]</sup>
EM/10W/RTS	10-watt emergency battery with regressed test switch <sup>[2]</sup>
EM/10W/IPRTS	10-watt emergency battery with IP65 rated regressed test switch <sup>[3]</sup>

- <sup>1</sup> Not available with S Trim Type or IP Trim Option.
- <sup>2</sup> Not available with S Trim Type, IP or WET/CC Trim Options.
- <sup>3</sup> Must specify IP Trim Option.

## MOUNTING DETAILS

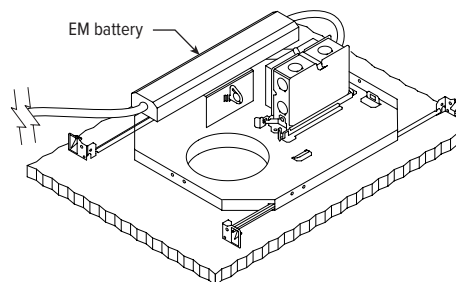
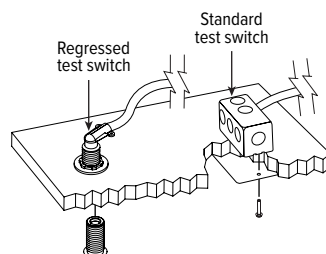


Regressed test switch  
ø1-3/4"



Standard test switch  
2-3/4" x 4-1/2"

Max remote distance is 50',  
connection by others.



## APERTURE ADAPTOR ORDERING INFO

ORDERING EXAMPLE: 4DR - GR - 0575 - WHT			
SERIES	CATALOG NUMBER	CEILING CUTOUT	FINISH
4AR 6AR 4DR 6DR 4DS 6DS 4PR 6PR 4PS 6PS 8DR	GR	Specify ceiling cutout in 1/8" increments. Example: 5.75" = 0575  See Kit Components for application limits.	CS Clear semi-specular powder coat WH White texture powder coat BL Black texture powder coat

Adaptor (goof ring) corrects ceiling cutout errors during remodel downlight installation.

Additional finishes available, consult factory.

For limitations and instructions, see [hew.com/aperture-adaptor.pdf](http://hew.com/aperture-adaptor.pdf)

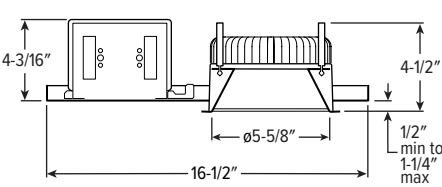


# 6PR LED

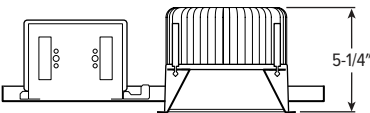
## 6" Shallow Plenum Downlight – Round

### CROSS SECTIONS

#### L10 – L30 LUMENS



#### L40 – L70 LUMENS



### TRIMLOCK DETAILS

#### TWIST



#### PULL

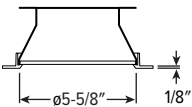


#### RELEASE

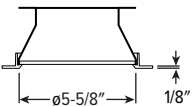


### TRIM TYPE DETAILS

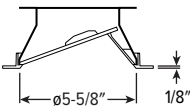
#### FLUSH



#### SHOWER

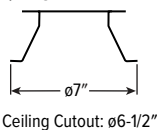


#### ANGLED

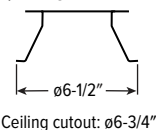


### FLANGE TYPE DETAILS

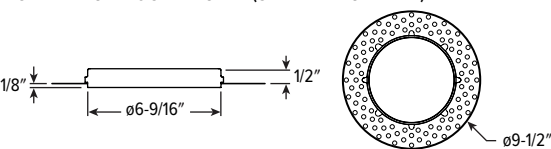
#### 1/2" STANDARD



#### 1/4" MUD-IN



#### MUD FLANGE MOUNTING KIT (SLIM FLANGE TYPE)



### REFLECTOR FINISH DETAILS

#### CS

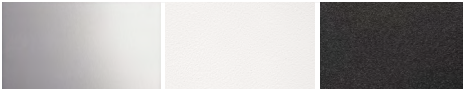
Clear semi-specular

#### WH

White

#### BL

Black



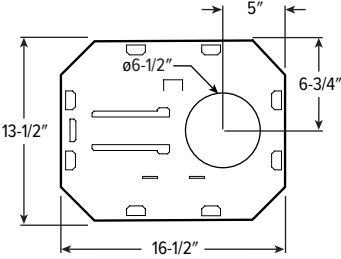
SEE NEXT PAGE FOR MOUNTING DETAILS



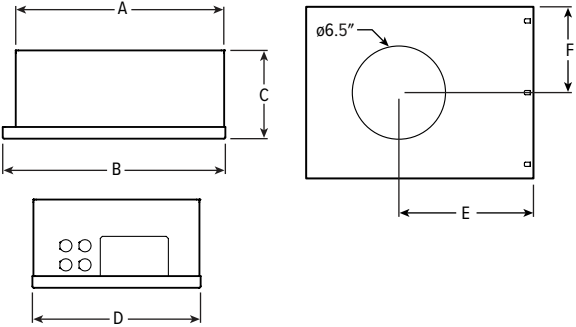
# 6PR LED 6" Shallow Plenum Downlight – Round

## MOUNTING TYPE DETAILS

### NEW CONSTRUCTION



### IC-RATED

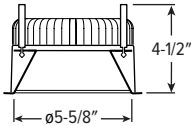


LUMENS	LENGTH					
	A	B	C	D	E	F
L10 - L20	15-1/16"	16"	4-1/2"	12-1/8"	9-1/2"	6-1/16"
L30	15-3/16"	16"	6-3/8"			

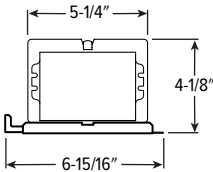
### REMODEL

#### CROSS SECTION

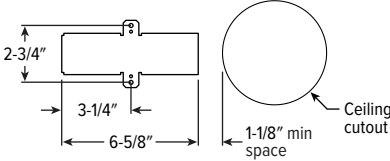
L10 – L30 lumens shown



#### DRIVER & JUNCTION BOX

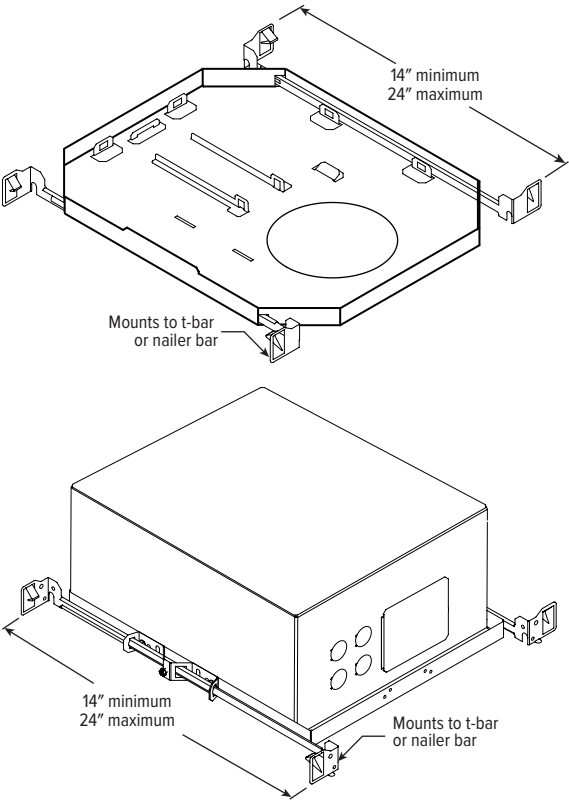


#### RECEIVER BRACKET



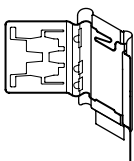
## MOUNTING HARDWARE DETAILS

**F1** Integral 2-position fixed pan bracket, universal bar hanger included

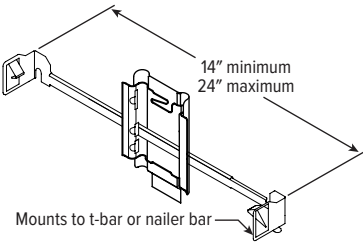


F1 with I Mounting Type

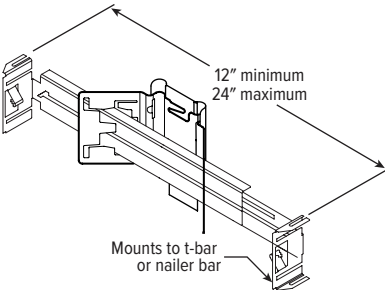
**BA1** Adjustable butterfly pan bracket, bar hanger not included (N Mounting Type only)



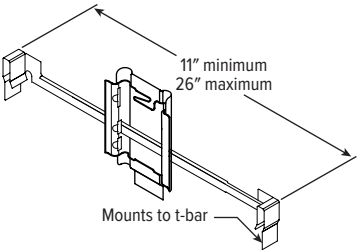
**CA1** Adjustable caterpillar pan bracket, universal bar hanger included (N Mounting Type only)



**BA2** Adjustable butterfly pan bracket, heavy-duty universal bar hanger included (N Mounting Type only)



**CA2** Adjustable caterpillar pan bracket, t-bar hanger included (N Mounting Type only)



SEE NEXT PAGE FOR CONTROL DETAILS.



# 6PR LED 6" Shallow Plenum Downlight – Round

## AVI-ON BLUETOOTH WIRELESS CONTROL DETAILS

### FEATURES

#### Simple

- Gateway-free distributed control
- Contractor friendly installation
- Occupancy/vacancy/daylight sensing

#### Scalable

- Virtually unlimited network size
- Spans small offices to large warehouses
- Flexible control strategies

#### Secure

- Optional cloud connectivity
- UL IoT platinum security rating
- DLC 5.0 compliant

### COMMISSIONING & INSTALLATION TOOLS

Avi-on mobile apps provide intuitive, quick installation and commissioning. Pro tools are available to qualified installers. Live commissioning training and on-site or remote support by Avi-on must be ordered separately through Avi-on.



Commissioning Mobile App

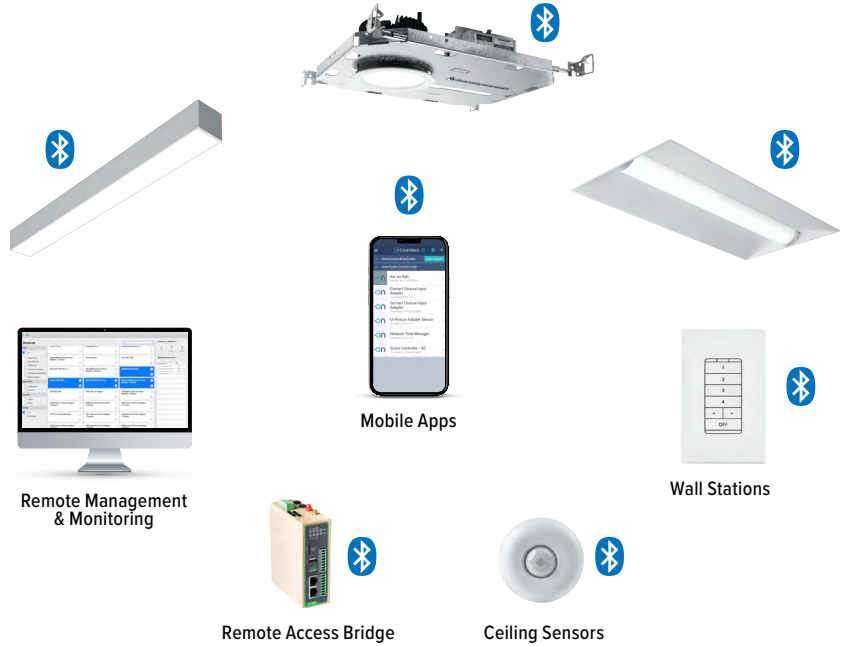


Zone Scanner Web App



Commissioning Pro App

### SYSTEM COMPONENTS



The Bluetooth® word mark and logos are registered trademarks owned by Bluetooth SIG, Inc. and any use of such marks by Avi-on is under license. Other trademarks and trade names are those of their respective owners.

### ACCESSORIES

WALL STATIONS	
AVI-B-2401AC-1	Scene controller - buttons numbered 1-4 and up/down/off, 120-277VAC
AVI-B-2402BAT-1	Scene controller - buttons numbered 1-4 and up/down/off, battery powered
AVI-B-2401AC-2	Dimmer with presets - buttons with percentages and up/down/off, 120-277VAC
AVI-B-2402BAT-2	Dimmer with presets - buttons with percentages and up/down/off, battery powered
AVI-B-2401AC-3	Two button control on/off or hold to dim up/down, 120-277VAC
AVI-B-2402BAT-3	Two button control on/off or hold to dim up/down, battery powered

NETWORK	
AVI-RAB-LTE	Remote access bridge
AVI-NTM	Network time manager with battery backup
CEILING MOUNT SENSORS	
AVI-KIT-SEN-DUCM	PIR motion and ultrasonic sensor kit
AVI-KIT-SEN-ICM	PIR motion and photocell sensor kit

For load controllers and additional accessory info, see [hew.com/avi-on](http://hew.com/avi-on)

### ADDITIONAL CONTROL/DRIVER OPTIONS

Lumen restrictions apply: L30 max for DMX driver, L30 max for Lutron drivers, L50 max for DIM LINE driver. R mounting type requires top access with DMX controls. R Mounting Type not available with VRF or FCJS controls. I Mounting Type not available with Lutron controls. 347V may require stepdown transformer, see product builder at [hew.com/product-builder](http://hew.com/product-builder)

CATALOG NUMBER	DESCRIPTION
AVI-LVFA/DA	Avi-on wireless fixture control for use with driver with 12V auxiliary power
VRF/DBI/LDE1	Lutron Vive integral fixture control, RF only (DFCSJ-OEM-RF) and digital link interface, with Lutron Hi-lume 1% EcoSystem dimming LED driver
FCJS/DIM	Lutron Vive PowPak wireless fixture control with dimming driver
FCJS/DIM1	Lutron Vive PowPak wireless fixture control with 1% dimming driver
DIM	Dimming driver prewired for 0-10V low voltage applications
DIM1	1% dimming driver prewired for 0-10V low voltage applications
DIM LINE	Line voltage dimming driver (TRIAC and ELV compatible at 120V only)
DALI	DALI dimming driver
DMX	0.1% dimming driver for DMX controls
LDE1	Lutron Hi-lume 1% EcoSystem dimming LED driver

