

CATALOG #: _____

TYPE: _____

PROJECT: _____



FEATURES

- Easily change between five color temperatures and three lumen outputs on-site with built-in switches
- Simple and quick installation in new construction, IC-rated, or remodel applications
- 90 CRI provides high-accuracy color rendering
- Suitable for wet locations under covered ceiling
- Durable spring clips secure fixture
- Efficacies up to 106 lm/W
- Available on QuickShip

SPECIFICATIONS

- HOUSING – Aluminum housing.
- TRIM – Aluminum white stepped baffle with diffuse lens.
- ELECTRICAL – Long-life LEDs provide estimated L70 >149,000 hours. 45°C max ambient operating temperature for non IC-rated applications. Complies with EN61000-4-5 surge protection (1kV). Harmonic distortion < 20%. Power factor > 0.90.
- MOUNTING – Compatible with 6"- 6-3/4" ceiling cutout. Heavy-duty mounting springs accommodate ceiling thicknesses up to 2-1/4". New construction mounting pan accessory available. Access above ceiling required to change color and lumens after installation. Weight 1.4 lbs.
- LISTINGS –
 - cETLus listed as LED luminaire suitable for wet locations under covered ceiling.
 - Conforms to UL STD.1598. Certified to CSA STD.C22.2 No.250.0.
 - Complies with FCC Part 15, Class B.
 - IC-rated for direct contact with insulation.
 - ENERGY STAR® certified in select configurations, see www.energystar.gov
- WARRANTY – 5-year limited warranty, see hew.com/warranty.

ORDERING EXAMPLE: 6RCD - LS/9CS - WH - DIM - UNV

ORDERING INFO

| SERIES | LUMENS ^[1] | CRI | CCT |
|--------|-------------------------------------------|-----|-------------------------------------------------------------|
| 6RCD | LS Selectable lumens 1,200/1,700/2,200 | 90 | CS Selectable CCT 2,700K/3,000K/3,500K/ 4,000K/5,000K |

| REFLECTOR FINISH | DRIVER | VOLTAGE |
|------------------------------------------------|--------------------------------------|--------------|
| WH White baffle trim with white flange | DIM Dim-to-off driver ^[2] | UNV 120-277V |
| SS Smooth semi-specular trim with white flange | | |

MOUNTING HARDWARE ACCESSORIES (ORDERED SEPARATELY) ^[3]

6RCD-N-F1 New construction mounting pan with integral 2-position fixed bracket, universal bar hangers.

QUICKSHIP

- 6RCD-LS/9CS-WH-QS-DIM-UNV
- 6RCD-LS/9CS-SS-QS-DIM-UNV
- 6RCD-N-F1-QS

NOTES

¹ Lumens based on WH finish, 3500K CCT. Actual performance may vary +/-5%. See page 2 for FIXTURE PERFORMANCE DATA.
² Prewired for 0-10V low-voltage applications. Dimming down to 10%, dim-to-off below 0.5V
³ See page 3 for MOUNTING HARDWARE ACCESSORIES DETAILS.

FIXTURE PERFORMANCE DATA

WHITE REFLECTOR FINISH

| WATTAGE SETTING | 2700K | | | 3000K | | | 3500K | | | 4000K | | | 5000K | | |
|-----------------|--------------|---------|-----------------|--------------|---------|-----------------|--------------|---------|-----------------|--------------|---------|-----------------|--------------|---------|-----------------|
| | LUMEN OUTPUT | WATTAGE | EFFICACY (LM/W) | LUMEN OUTPUT | WATTAGE | EFFICACY (LM/W) | LUMEN OUTPUT | WATTAGE | EFFICACY (LM/W) | LUMEN OUTPUT | WATTAGE | EFFICACY (LM/W) | LUMEN OUTPUT | WATTAGE | EFFICACY (LM/W) |
| Low | 1106 | 12.1 | 91 | 1166 | 12.0 | 97 | 1211 | 11.9 | 102 | 1231 | 11.9 | 103 | 1233 | 12.1 | 101 |
| Medium | 1582 | 17.3 | 91 | 1682 | 17.0 | 99 | 1756 | 16.8 | 104 | 1789 | 16.9 | 105 | 1769 | 17.3 | 102 |
| High | 1949 | 21.9 | 89 | 2085 | 21.5 | 97 | 2193 | 21.5 | 102 | 2234 | 21.2 | 105 | 2187 | 21.8 | 100 |

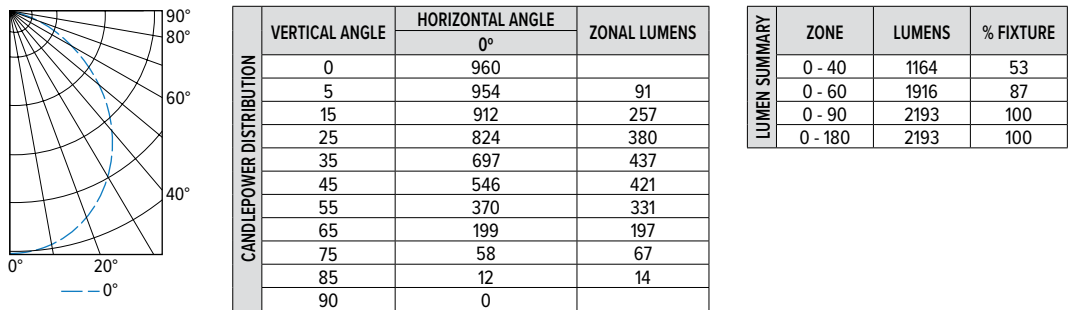
SEMI-SPECULAR REFLECTOR FINISH

| WATTAGE SETTING | 2700K | | | 3000K | | | 3500K | | | 4000K | | | 5000K | | |
|-----------------|--------------|---------|-----------------|--------------|---------|-----------------|--------------|---------|-----------------|--------------|---------|-----------------|--------------|---------|-----------------|
| | LUMEN OUTPUT | WATTAGE | EFFICACY (LM/W) | LUMEN OUTPUT | WATTAGE | EFFICACY (LM/W) | LUMEN OUTPUT | WATTAGE | EFFICACY (LM/W) | LUMEN OUTPUT | WATTAGE | EFFICACY (LM/W) | LUMEN OUTPUT | WATTAGE | EFFICACY (LM/W) |
| Low | 985 | 10.6 | 93 | 993 | 10.5 | 95 | 1022 | 10.4 | 98 | 1050 | 10.4 | 101 | 1071 | 10.5 | 102 |
| Medium | 1346 | 14.2 | 95 | 1365 | 14.1 | 97 | 1415 | 13.9 | 102 | 1457 | 13.9 | 105 | 1476 | 14.2 | 104 |
| High | 1788 | 18.9 | 95 | 1834 | 18.8 | 98 | 1911 | 18.6 | 103 | 1975 | 18.6 | 106 | 1985 | 19.0 | 104 |

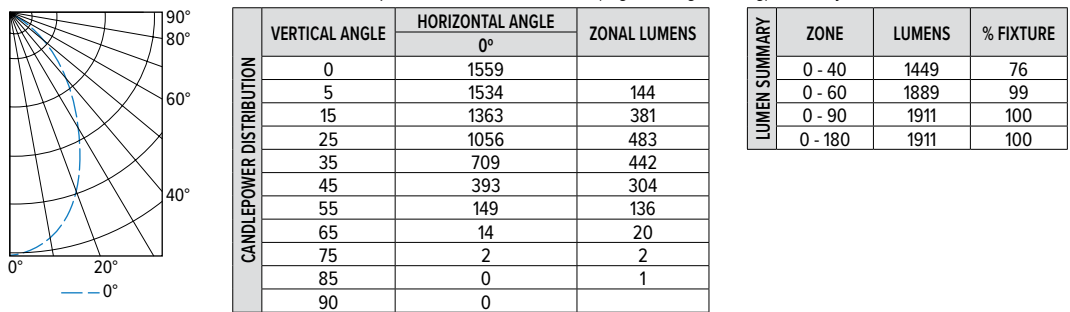
Actual performance may vary +/-5%.

PHOTOMETRY

6RCD-LS/9CS-WH-DIM-UNV Total Luminaire Output: 2193 lumens; 21.5 Watts (High Wattage Setting) | Efficacy: 102 lm/W | 90 CRI; 3500K CCT



6RCD-LS/9CS-SS-DIM-UNV Total Luminaire Output: 1911 lumens; 18.6 Watts (High Wattage Setting) | Efficacy: 103 lm/W | 90 CRI; 3500K CCT



FIXTURE DETAILS

FIELDSELECT SWITCHES



REFLECTOR FINISH

WH

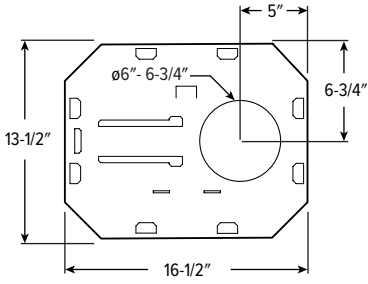


SS



MOUNTING HARDWARE ACCESSORIES DETAILS

PAN DIMENSIONS



ISOMETRIC VIEW

