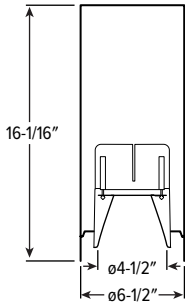


6CR dim to **WARM** 6.5" Cylinder – Round



CATALOG #: _____

TYPE: _____

PROJECT: _____



TrimLock® TwistLock™

ORDERING EXAMPLE: 6CR - TL - 16 - L24/9DW - OPTIONS - WHT - DIM1 - UNV - OW - CS - TRIM OPTIONS - CM
HOUSING TRIM MOUNT.

HOUSING

SERIES	HEIGHT	LUMENS ^[1]	COLOR	OPTIONS	HOUSING FINISH ^[2]	CONTROL	VOLTAGE
6CR - TL TrimLock	16 16"	L8 800lm L15 1,500lm L24 2,400lm	9DW Dim to warm (95 CRI, 1800K – 3000K)	EM/10WRM/RTS Remote mount 10-watt emergency battery with regressed test switch ^[3] F Fuse RDB Remote mount control/ driver box, galvanized steel ^[4]	ALUM Silver sparkle aluminum BLK Textured black BRZ Textured bronze NKL Textured nickel SLV Textured silver WHT Textured white	See page 3 for CONTROL DETAILS. DIM1 1% dimming driver (0-10V signal to control dimming and CCT) LUT Lutron Ecosystem enabled	UNV 120-277V 347 347V

TRIM

TRIM TYPE	DISTRIBUTION	REFLECTOR FINISH ^[5]	TRIM OPTIONS
O Open reflector F Open reflector with frosted top diffuser L Flush lens R Regressed lens	See page 2 for BEAM ANGLE. W Wide M Medium N Narrow	Open Trim Types CS Clear semi-specular anodize SG Satin-glow anodize GD Gold anodize CG Champagne gold anodize PW Pewter anodize SPC Clear specular anodize RG Rose gold anodize WH White texture powder coat BL Black texture powder coat Lens Trim Types CS Clear semi-specular powder coat WH White texture powder coat BL Black texture powder coat BZ Bronze texture powder coat NK Nickel texture powder coat SV Silver texture powder coat AL Silver sparkle aluminum	AD Diffuse acrylic lens ^[6] PD Diffuse 1/8" polycarbonate lens ^[7]

MOUNTING

MOUNTING TYPE ^[8]

CM__ Adjustable aircraft cable mount, 24", 48", 96", or 144" only, must specify. Example: 24" cable = CM24 ^[9]
PM__ Pendant mount. Example: 24" pendant = PM24 ^[10]
PC__ Power cord mount. Example: 24" cord = PC24 ^[11]
SM TwistLock surface mount to octagonal J-box
WM Wall mount

NOTES

- ¹ Lumen output based on O Trim Type, W Distribution and CS Reflector Finish, 95CRI/3000K CCT. Actual performance may vary +/-5%, see page 2 for FIXTURE PERFORMANCE DATA
- ² See page 3 for HOUSING FINISH DETAILS.
- ³ Max remote distance 50', including suspension length. Large remote box provided. Specify CEC in the option code when California Energy Commission regulations are required. See page 3 for EMERGENCY BATTERY DETAILS.
- ⁴ Painted driver box available, specify RDB/BLK or RDB/WHT.
- ⁵ See page 4 for REFLECTOR FINISH DETAILS.
- ⁶ Not available with O or F Trim Types. W Distribution only.

- ⁷ Not available with O or F Trim Types. W Distribution only.
- ⁸ See page 4 for MOUNTING DETAILS.
- ⁹ Canopy painted white unless specified otherwise. Must specify cord. See page 4 for CORD OPTIONS.
- ¹⁰ Specify length in 1" increments, minimum 6". Canopy and pendant match fixture housing color unless specified otherwise.
- ¹¹ 48" and 96" lengths available. Canopy painted white unless specified otherwise. Must specify cord. See page 4 for CORD OPTIONS.



6CR dim to **WARM** 6.5" Cylinder – Round

FEATURES

- Mimic the comfortable, welcoming glow of incandescent with warm-dimming technology
- Superior optical control with beams as narrow as 10° and field changeable optics as wide as 65°
- Complement the architectural elements of any space with a multitude of housing, trim and cord finishes
- Comprehensive list of mounting options – pendant, cable, power cord, wall and ceiling
- Ensure a simple and secure installation with TwistLock™ surface mount technology
- Precision-engineered extruded aluminum housing and die-cast aluminum trim face for clean aesthetic
- Low UGR meets LEED and WELL requirements
- Made Right Here® in the USA

SPECIFICATIONS

- HOUSING** – Extruded aluminum with die-cast aluminum accent ring.
- FINISH** – Polyester powder coat bonded to phosphate-free, multi-stage pretreated metal. All parts painted after fabrication to facilitate installation, increase efficiency, and inhibit corrosion.
- TRIMLOCK** – Innovative TrimLock® reflector retention system ensures trim remains secure.
- OPEN REFLECTOR** – Low-iridescent anodized aluminum. Clear semi-specular finish standard.
- LENSED TRIM** – Die-cast aluminum frame with micro-prismatic, acrylic lens.
- ELECTRICAL** – High-performance Class 2 C.O.B. LED array. Modular quick-connect plug for easy field-connection of LED light assembly to driver. Reported L70>55,000 hours. Reported L90>55,000 hours. Estimated L70 = 200,000 hours.
- MOUNTING** – Surface, cable, pendant, power cord, or wall mount. Indoor applications only. Max weight 9-1/2 lbs.
- LISTINGS** –
 - cCSAus conforms to UL STD 1598 and UL STD 8750. Certified to CAN/CSA STD C22.2 No. 250.0. Suitable for dry and damp locations.
 - Build America, Buy America (BABA) and Buy American Act (BAA) compliant. Request certification at hew.com/buy-american.
- WARRANTY** – 5-year limited warranty, see hew.com/warranty.

FIXTURE PERFORMANCE DATA

					OPEN REFLECTOR		FLUSH LENS		REGRESSED LENS	
	CCT AT 100% (FULL OUTPUT)	CCT AT 1% (FULL DIM)	DIS.	WATTAGE	DELIVERED LUMENS	EFFICACY (lm/W)	DELIVERED LUMENS	EFFICACY (lm/W)	DELIVERED LUMENS	EFFICACY (lm/W)
L8	3000K	1800K	W	14.0	862	61.6	670	47.9	678	48.4
			M	14.0	830	59.3	760	54.3	763	54.5
			N	14.0	800	57.1	765	54.7	769	54.9
L15			W	23.4	1511	64.6	1175	50.3	1188	50.8
			M	23.4	1455	62.3	1333	57.0	1337	57.2
			N	23.4	1402	60.0	1242	57.4	1348	57.7
L24			W	37.7	2228	59.1	1925	51.1	1945	51.6
			M	37.7	2226	59.0	1995	52.9	1997	52.9
			N	37.7	2228	59.1	2197	58.3	2208	58.6

- Photometrics tested in accordance with IESNA LM-79. Results based on CS (O Trim Type) or WH (L and R Trim Types) Reflector Finish, W Distribution, 95 CRI/3000K CCT, average wattage for 120V input, and 25°C ambient temperature. Actual performance may vary +/-5%.
- To calculate lumen output in emergency mode, multiply the battery wattage by the efficacy.
- Use multiplier tables to calculate additional options.

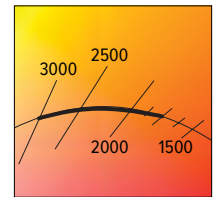
BEAM ANGLE

	TRIM TYPE ^[2]			
	O	F	L	R
W	65°	60°	50°	50°
M	45°	50°	35°	30°
N	10°	25°	25°	25°

MULTIPLIER TABLES

	REFLECTOR FINISH	
	CATALOG NUMBER	CONVERSION FACTOR
O TRIM	CS	1.00
	SG ^[1]	0.92
	GD	0.93
	CG	0.96
	PW	0.86
	SPC	1.02
	RG	0.88
	WH ^[1]	0.89
	BL ^[1]	0.47
R TRIM	WH	1.00
	CS ^[1]	0.98
	BL ^[1]	0.79
	BZ ^[1]	0.76
	NK ^[1]	0.81
	SV ^[1]	0.81
	AL ^[1]	0.86

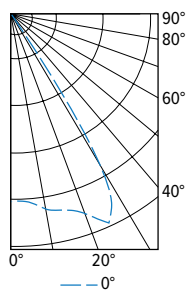
TRIM OPTIONS	
CATALOG NUMBER	CONVERSION FACTOR
F	0.75
AD	0.85
PD	0.85



- ¹ Distribution will also be affected, consult factory.
² Beam angle based on CS or WH Reflector Finish.

PHOTOMETRY

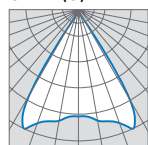
6CR-TL-16-L24/9DW-DIM1-UNV-OW-CS Total Luminaire Output: 2228 lumens; 37.7 Watts | Efficacy: 59.1 lm/W | 95.0 CRI; 3000K CCT



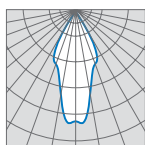
	VERTICAL ANGLE	HORIZONTAL ANGLE	ZONAL LUMENS
		0°	
CANDLEPOWER DISTRIBUTION	0	2011	
	5	2071	198
	15	2178	617
	25	2479	1147
	35	341	215
	45	49	38
	55	12	11
	65	1	1
	75	0	0
	85	0	0
	90	0	0

	LUMEN SUMMARY		
	ZONE	LUMENS	% FIXTURE
LUMEN SUMMARY	0 - 40	2176	98
	0 - 60	2226	100
	0 - 90	2228	100
	0 - 180	2228	100

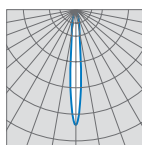
OPEN (O)



65° Wide

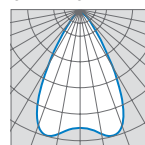


45° Medium

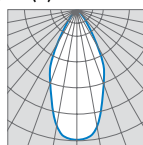


10° Narrow

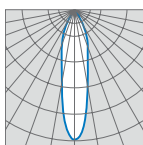
OPEN TOP DIFFUSER (F)



60° Wide

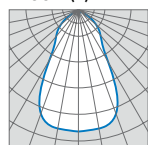


50° Medium

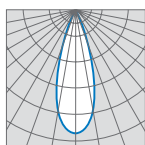


25° Narrow

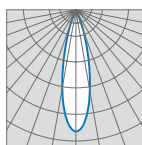
FLUSH (L)



50° Wide

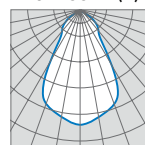


35° Medium

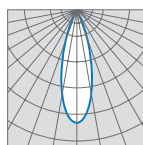


25° Narrow

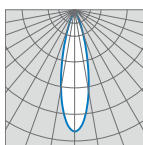
REGRESSED (R)



50° Wide



30° Medium



25° Narrow



H.E. Williams, Inc.

Carthage, Missouri

www.hew.com

417-358-4065

Designed and Manufactured in the USA

Information contained herein is subject to change without notice.

REV.01/10/25.JL

Cylinders
Page 2 of 4

6CR dim to WARM

6.5" Cylinder – Round

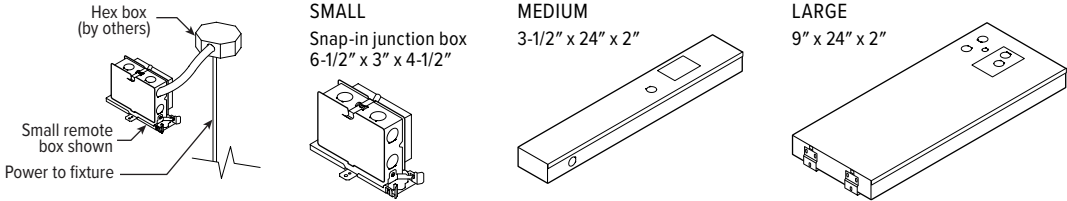
CONTROL DETAILS

CONTROL	DESCRIPTION	RDB DETAILS BY LUMEN STOP			
		L8	L15	L24	w/EM
DIM1	1% dimming driver (0-10V signal to control dimming and CCT) prewired for low voltage applications	OIS	OIS	OIM	RIL
LUT	Lutron Ecosystem enabled	OIM	OIM	OIM	RIL

REMOTE MOUNT KEY	
OIS	RDB Optional, Small Box
OIM	RDB Optional, Medium Box
RIL	RDB Required, Large Box

REMOTE MOUNT DETAILS

Max remote distance is 50' including suspension length, connection by others. Must be room-side accessible for maintenance.

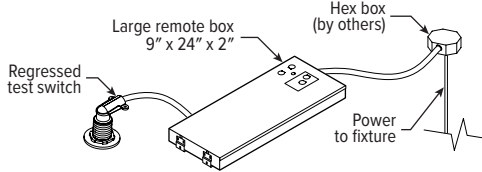


EMERGENCY BATTERY DETAILS



Regressed test switch
ø1-3/4"

Max remote distance is 50' including suspension length, connection by others.



TRIMLOCK DETAILS

TWIST



PULL

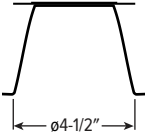


RELEASE

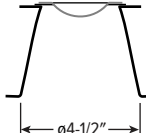


TRIM TYPE DETAILS

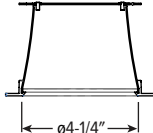
OPEN



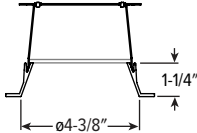
OPEN TOP DIFFUSER



FLUSH

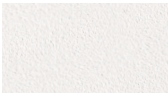


REGRESSED

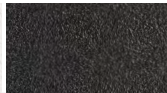


HOUSING FINISH DETAILS

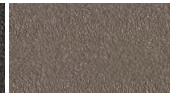
WHITE



BLACK



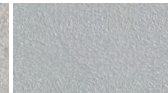
BRONZE



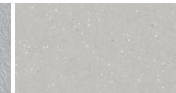
NICKEL



SILVER



ALUM



For custom color, please specify RAL code or a manufacturer code with description. All custom colors other than RAL require two sample swatches, minimum 1" square.



6CR dim to **WARM**

6.5" Cylinder – Round

REFLECTOR FINISH DETAILS

Smooth Finish

SPC

SG

PW

GD

CG

RG

CS

AL

Textured Finish

WH

BL

BZ

NK

SV

MOUNTING DETAILS

PENDANT MOUNT (PM__)

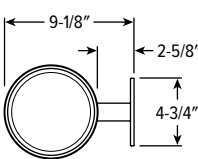


- Provided with:
- 38° Swivel canopy
 - 3/8" IPS Threaded stem
 - Specify length of stem, 6" minimum, 24" default length

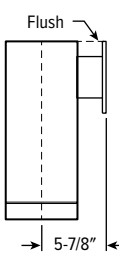
WALL MOUNT (WM)



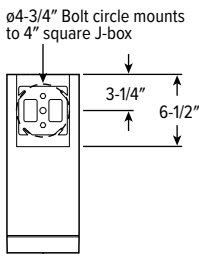
TOP VIEW



SIDE VIEW



BACK VIEW



SURFACE MOUNT (SM)



- TwistLock™**
- Simple lift-and-twist mounting secures fixture to J-box.

CABLE MOUNT (CM__)



- Provided with:
- Adjustable length aircraft cable, must specify length in 24", 48", 96", or 144" inches.
 - 18-gauge cord, see Cord Options for ordering info.
 - One 5" canopy
 - T-bar clip with 1/4-20 stud
 - Hard ceiling anchor provided by others

POWER CORD MOUNT (PC)



- Provided with:
- 18-gauge cord, see Cord Options for ordering info.
 - One 5" canopy
 - Power cord mounting adaptor

CORD OPTIONS

Must specify cord when cable and power cord mounting.

ORDERING EXAMPLE: S2438/W				
CORD TYPE	LENGTH	# CONDUCTORS	WIRE SIZE	COLOR
S Straight	24 24" 48 48" 96 96"	3 3 4 4 5 5 6 6	8 18-gauge	Standard
				/W White
				/B Black
				Braided ^[1]
				/WH White
				/BL Black
S Straight	24 24" 48 48" 96 96"	3 3 4 4 5 5 6 6	8 18-gauge	/BR Brass
				/AE Aegean Blue
				/RE Red
				/SV Silver
				/GU Gunmetal
				/NK Nickel
S Straight	24 24" 48 48" 96 96"	3 3 4 4 5 5 6 6	8 18-gauge	/GR Gray

¹ (5) conductors cord only.

COLOR DETAILS

Additional colors may be available, consult factory.

