

CATALOG #: _____

TYPE: _____

PROJECT: _____

FEATURES

- Tunable white from 3000K to 5000K CCT, minimum 80 CRI
- Small fixture profile allows inconspicuous placement in coves or confined spaces
- Choice of diffuse and prismatic lenses
- Flat lens provides even illumination and minimizes glare
- Row applications produce continuous light with minimal interruption between fixtures
- Variety of surface and suspended mounting accessories
- Maximize energy savings with efficacies as high as 132 lm/W
- Made Right Here® in the USA

SPECIFICATIONS

- HOUSING** – 22-gauge die-formed C.R.S.
- FINISH** – 92% minimum average reflective white polyester powder coat bonded to phosphate-free, multi-stage pretreated metal. All parts painted after fabrication to facilitate installation, increase efficiency, and inhibit corrosion.
- SHIELDING** – Diffuse matte acrylic, .080" thick.
- ELECTRICAL** – Electrical – High quality mid-power LED board. L70 > 60,000 hours per IES TM-21. Tunable White products use LEDs of multiple CCTs and may produce a perceptibly different shade of white from single-CCT products at the same CCT. All CCTs are within 3 MacAdam ellipses. 25°C maximum ambient operating temperature.
- MOUNTING** – Surface (ceiling or wall) or suspended.
- LISTINGS** –
 - cETLus conforms to UL STD 1598. Certified to CAN/CSA STD C22.2 No. 250.0. Suitable for damp locations
- WARRANTY** – 5-year limited warranty, see hew.com/warranty.

ORDERING EXAMPLE: 75L - 4 - L65/8TW - DMA - OPTIONS - DALI - UNV

ORDERING INFO

SERIES	LENGTH ^[1]	LUMENS ^[2]	COLOR	SHIELDING
75L	2 2'	2'	8TW Tunable white (80 CRI, 3000K-5000K)	DMA Diffuse matte acrylic, .080" thick
	4 4'	L25 2,500lm		AF12125 Frosted acrylic, pattern #12, .125" thick
	8 8'	L35 3,500lm		
		L65 6,500lm		
		L70 7,000lm		
		L130 13,000lm		

OPTIONS ^[3]	CONTROL ^[4]	VOLTAGE
EM/10WLP Low-profile 10-watt emergency battery ^[5]	DALI Driver prewired for DALI applications	120 120V 277 277V
EM/10WRM Remote mount 10-watt emergency battery ^[6]	DIM Dimming driver with (1) 0-10V signal to control dimming and (1) 0-10V signal to control CCT	UNV 120-277V
WG-75 11-gauge white powder coat wireguard	DMX Driver prewired for DMX applications	
315 1-1/2" ceiling spacer	PSQ Lutron T-Series 2-channel tunable white 1%.	
VBV (2) Y-hangers		
VBV-2 (2) Y-hangers and (2) 2' chains		
RA-75 Row aligner ^[7]		
45AMB (2) 45° adjustable mounting brackets ^[8]		
(L__) Additional lower lumen packages available. ^[9] Example: 5,500 nominal lumens = 75L-4-L65/8TW-(L55)		

OCCUPANCY SENSOR

OCCWS FSP-311-L2-120/277 Digital high/low passive infrared with L2 lens, end mount, 120V or 277V ^[10]

AIRCRAFT CABLES (EXAMPLE: ACF/D48) ^[11]

Prefix	Type	Length
ACF/ Feeder	D 1" grid & hardpan	24 24"
ACJ/ Joiner	N 9/16" grid	48 48"
	S Slot grid	96 96"

NOTES

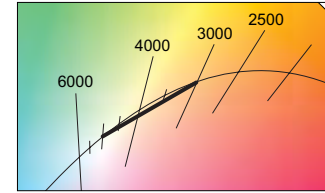
- For actual length, see page 2 for FIXTURE DETAILS.
- Lumens based on 4000 CCT. Actual lumens may vary +/-5%, see page 2 for FIXTURE PERFORMANCE DATA.
- See page 3 for FINISH OPTIONS. See page 2 for MOUNTING DETAILS.
- See page 3 for CONTROL DETAILS.
- 4' and 8' only; must specify 120V or 277V. Not available with L65 and L130 lumen packages.
- 2' only; must specify 120V or 277V. Not available with L32 lumen package.
- Required when row mounting with aircraft cables.
- Cord recommended, ordered separately. See page 2 for MOUNTING DETAILS. Field-adjustable up and down in 7-1/2° increments.
- Specify in increments of 100 nominal lumens. Option must be specified with next higher lumen package.
- See page 3 for OCCUPANCY SENSOR DETAILS.
- Units specified with aircraft cable require cord. See page 2 for MOUNTING DETAILS. Requires RA-75 row aligner. See page 3 for MOUNTING ACCESSORIES DETAILS.

FIXTURE PERFORMANCE DATA

LED PACKAGE	WATTAGE	DMA LENS		AF12125 LENS	
		DELIVERED LUMENS	EFFICACY (lm/W)	DELIVERED LUMENS	EFFICACY (lm/W)
2' L25	23.4	2531	108.1	2913	124.4
4' L35	31.0	3519	113.6	4050	130.7
L65	57.5	6601	114.7	7598	132.0
8' L70	62.0	7038	113.6	8101	130.7
L130	115.1	13203	114.7	15197	132.0

MULTIPLIER TABLE

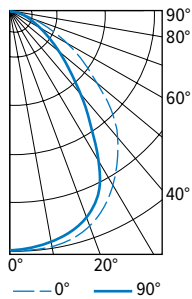
CCT	CONVERSION FACTOR	
	LUMENS	WATTAGE
3000K	0.95	1.04
3500K	0.98	1.02
4000K	1.00	1.00
5000K	0.96	1.04



- Photometrics tested in accordance with IESNA LM-79. Results shown are based on 25°C ambient temperature.
- Wattage shown is average for 120V through 277V input.
- Results based on 4000K, 80 CRI, actual lumens may vary +/-5%
- Use multiplier table to calculate additional options.

PHOTOMETRY

75L-4-L65/8TW-DMA Total Luminaire Output: 6601 lumens; 57.5 Watts | Efficacy: 114.7 lm/W | 80 CRI; 4000K CCT

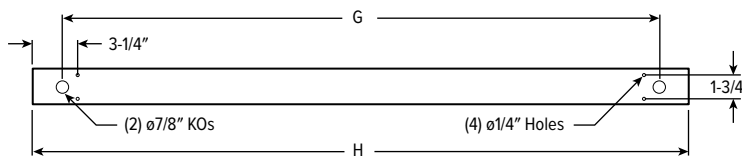


VERTICAL ANGLE	HORIZONTAL ANGLE			ZONAL LUMENS
	0°	45°	90°	
0	2896	2896	2896	
5	2950	2883	2826	273
15	2824	2738	2658	770
25	2565	2446	2315	1121
35	2180	2044	1825	1264
45	1745	1552	1283	1185
55	1227	1056	862	946
65	764	646	500	639
75	374	301	226	323
85	89	67	47	80
90	0	0	0	

LUMEN SUMMARY	ZONE	LUMENS	% FIXTURE
	0 - 30	2164	33
	0 - 40	3428	52
	0 - 60	5559	84
	0 - 90	6601	100
	0 - 180	6601	100

FIXTURE DETAILS

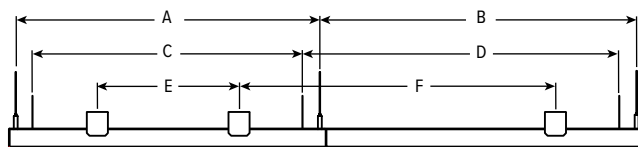
BACKVIEW



7/8" KOs (G)	ACTUAL FIXTURE LENGTH (H)
2'	18-3/8"
4'	40-1/2"
8'	85-1/8"

MOUNTING DETAILS

STAND ALONE

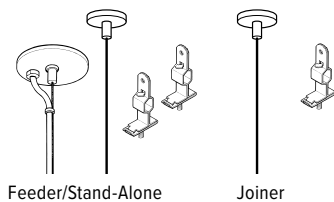


SUBSEQUENT

MOUNTING LENGTH

	AIRCRAFT CABLE		VBY HANGER		315 SPACER	
	A	B	C	D	E	F
2'	21-1/2"	22-1/2"	19"	22-1/2"	10"	22-1/2"
4'	43-5/8"	44-5/8"	41-1/4"	44-5/8"	32"	44-5/8"
8'	88-3/16"	89-1/4"	85"	89-1/4"	77"	89-1/4"

STANDARD HARDWARE FOR SUSPENDED PRODUCT (Grid and Hardpan)



Notes:

- Fixtures are provided with adjustable length aircraft cables and mounting hardware, must specify.
- Electrical supply is brought into the feeder fixture, either as part of a row or as a stand-alone unit. Joiner fixtures complete the row.
- The feeder kits are standard with a 5" canopy to cover the junction box and a 2" canopy at the non-feed point. No J-box is required at non-feed points.

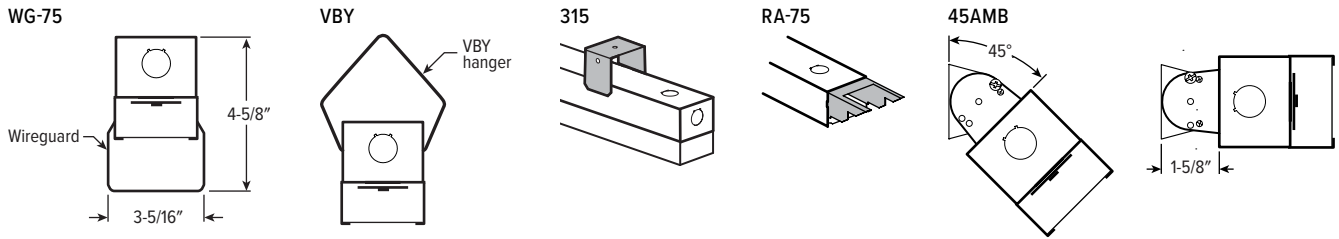
CORD FOR SUSPENDED PRODUCT

Units specified with aircraft cable require cord. Please specify cord type using ordering information below.

EXAMPLE: S2438/W					
CORD TYPE	LENGTH	# OF COND.	WIRE SIZE	COLOR	
S	24 24"	3	8	/W White /B Black	
	48 48"	4			
	96 96"	5			

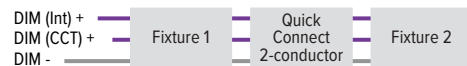


MOUNTING ACCESSORIES DETAILS



CONTROL DETAILS

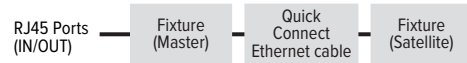
DIM



DALI



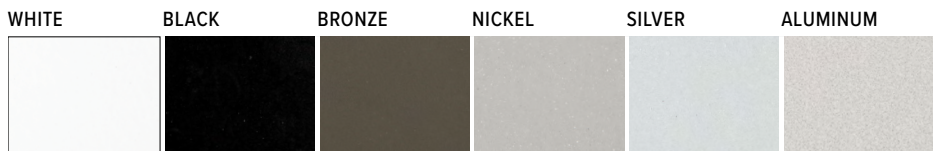
DMX



LUTRON T-SERIES



FINISH OPTIONS



For custom color, please specify RAL code or a manufacturer code with description. All custom colors other than RAL require two sample swatches, minimum 1" square.

OCCUPANCY SENSOR DETAILS

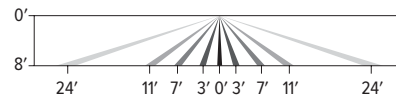
ORDERING EXAMPLE: OCCWS FSP-311-L2-120/277

FEATURES

- Fully adjustable high and low dimmed light levels.
- Designed for LED fixtures; rated for up to 200,000 on/off cycles.
- Hold-off setpoint with automatic calibration option for convenience and added energy savings.
- Adjustable via sensor configuration app.
- Adjustable time delay and cutoff delay.
- Factory set to 10% dimming at 5 minutes, cutoff at 1 hour.

LENS COVERAGE PATTERNS

L2 Coverage at 8' mounting height: ø48'



SENSOR CONFIGURATION APP

Initial setup and subsequent sensor adjustments are made using the iOS or Android Sensor Configuration App. This app enables adjustment of parameters including high and low modes, sensitivity, time delay, cut off and more. The smartphone app is also used to initiate automatic calibration of the FSP-3x1B ambient light level setpoint. The setpoint is used to hold the controlled lighting off or at low level when there is sufficient daylight. The wireless tool stores an unlimited number of sensor parameter profiles to speed configuration of multiple sensors.

Visit www.wattstopper.com for more information.

