

CATALOG #: _____

TYPE: _____

PROJECT: _____



FEATURES

- Small fixture profile allows inconspicuous placement in confined spaces
- Round and square lenses provide a clean look for architectural environments
- Row applications produce continuous light with minimal interruption
- Diffuse acrylic lens enhances uniformity and minimizes glare
- Variety of mounting accessories for surface and suspended applications
- Special reflectors are available to provide precise light distribution
- HE option delivers superior efficacies up to 182 lm/W
- Optional wireguard provides added protection
- Available on QuickShip at hew.com/75R_quickship.pdf and hew.com/75S_quickship.pdf
- Support human-centric design with adaptive, individualized lighting using tunable white light
- Wireless in-fixture control solutions available
- Made Right Here® in the USA

SPECIFICATIONS

- HOUSING** – 22-gauge die-formed C.R.S.
- SHIELDING** – Diffuse acrylic lens. Frosted polycarbonate available for 75R, specify FP Option.
- FINISH** – 92% minimum average reflective white polyester powder coat bonded to phosphate-free, multi-stage pretreated metal. All parts painted after fabrication to facilitate installation, increase efficiency, and inhibit corrosion.
- ELECTRICAL** – High-quality mid-power LED board. L70 > 72,000 hours per IES TM-21. L80 > 102,000 hours with HE option. 25°C maximum ambient operating temperature. 50°C max with HA50 Option. 50/60 Hz constant current driver. Tunable White products use LEDs of multiple shade of white from single-CCT products at the same CCT. All CCTs are within 3 MacAdam ellipses.
- MOUNTING** – Surface (ceiling or wall) or suspended (hanging hardware required).
- LISTINGS** –
 - cETLus conforms to UL STD 1598. Certified to CAN/CSA STD C22.2 No. 250.0. Suitable for damp locations
 - UL 924 available, see Options.
 - DesignLights Consortium qualified product. Not all versions of this product may be DLC qualified, see the DLC Qualified Products List at designlights.org/QPL
 - Build America, Buy America (BABA) and Buy American Act (BAA) compliant. Request certification at hew.com/buy-american
- WARRANTY** – 5-year limited warranty, see hew.com/warranty

ORDERING EXAMPLE: 75R - 4 - L85/835 - OPTIONS - CONTROL/DIM - UNV

SERIES	LENGTH	LUMENS ^[1]	CRI	CCT
75R Round lens	2 22-1/2"	2' L15 1,500lm	8 80	27 2700K
	3 33-9/16"	L40 4,000lm	9 90	30 3000K
75S Square lens	4 44-5/8"	L25 2,500lm		35 3500K
	8 89-1/4" ^[2]	L64 6,400lm		40 4000K
		Single CCT only		50 5000K
		L32 3,200lm		TW Tunable white (3000K-5000K)
		L42 4,200lm		TW2 Tunable white (2700K-6500K)
		Single CCT only		
		L65 6,500lm		
		L85 8,500lm		
		L100 10,000lm		
		Single CCT only		
		L130 13,000lm		
		L170 17,000lm		
		L200 20,000lm		

OPTIONS ^[3]

See page 3 for **FINISH OPTIONS**. See page 3 for **SPECIAL REFLECTOR OPTIONS**. See page 3 for **QUICK-CONNECT OPTIONS**.

EM/10WLP	Low-profile 10-watt emergency battery ^[4]
EM/10WRM	Remote mount 10-watt emergency battery
EM/10WRM/RTS	Remote mount 10-watt emergency battery with regressed test switch
HE	High efficacy lumen package ^[5]
HA	High ambient operating temperature, 40°C ^[6]
HA50	High ambient operating temperature, 50°C ^[7]
WG-75	11-gauge white powder coat wireguard ^[8]
315	1-1/2" ceiling spacer
VBY	(2) Y-hangers
VBY-2	(2) Y-hangers with 2' chains
RA-75	Row aligner ^[9]
45AMB	(2) 45° adjustable mounting brackets ^[10]

FP Frosted polycarbonate lens for 75R
(L___) Additional lower lumen packages available ^[11]
Example: 7,000 nominal lumens = 75R-4-L85/835-(L70)

QC___ Quick-connect wiring harness
GEN Approved for UL 924 emergency generator circuit through-feed wiring ^[12]

SP1 10kV surge protection, 120 or 277V
SP2 10kV surge protection, 208 or 240V
SP3 10kV surge protection, 347V

AIRCRAFT CABLES (EXAMPLE: ACF/D48) ^[13]

Prefix	Type	Length
ACF/ Feeder	D 1" grid & hardpan	24 24"
ACJ/ Joiner	N 9/16" grid	48 48"
	S Slot grid	96 96"

CONTROL

Click [HERE](#) for linear control and sensor options.

Click [HERE](#) for industrial control and sensor options.

– None

DRIVER

See page 5 for **ADDITIONAL DRIVER OPTIONS**.

DIM Driver with external 0-10V dimming wires
DIM1 1% Driver with external 0-10V dimming wires
DRV Driver without external dimming wires ^[15]

VOLTAGE

120	120V
208	208V
240	240V
277	277V
UNV	120-277V
347	347V ^[14]

NOTES

- Lumen output based on 80 CRI, 3500K for static white and 4000K for tunable white. Actual performance may vary +/-5%, see page 2 for FIXTURE PERFORMANCE DATA. Additional lumen packages available, see options.
- Ships with (2) 4' lenses.
- Remote EM batteries: max remote distance 50', including suspension length. Large remote box provided. Specify CEC in the option code when California Energy Commission regulations are required. See page 4 for REMOTE MOUNT BATTERY DETAILS.
- Not available with 2' fixtures.
- Not available with tunable white or 90 CRI, 3' Length, 2' L15, 4' L30, or 8' L60 lumen packages. See page 2 for FIXTURE PERFORMANCE DATA.
- Lumen restrictions apply. See page 2 for FIXTURE PERFORMANCE DATA.

- Lumen restrictions apply: L32 max for 2', L40 max for 3', L65 max for 4', L130 max for 8'. Not available with EM batteries.
- Shipped separately, field-installed.
- Required when row mounting with aircraft cables.
- Cord recommended, ships separately. See page 4 for MOUNTING ACCESSORY DETAILS. Field-adjustable up and down in 7-1/2" increments.
- Specify in increments of 100 nominal lumens. Option must be specified with next higher lumen package.
- Maximum mounting height is 15.4' (4.7 m). Minimum lumen output is 400 lm/ft. See hew.com/UL924 for details.
- Units specified with aircraft cable require cord and RA-75 row aligner. See page 4 for MOUNTING ACCESSORY DETAILS.
- Not available with Tunable White or EM batteries.
- Not available with tunable white.



H.E. Williams, Inc.

Carthage, Missouri

www.hew.com

417-358-4065

Designed and Manufactured in the USA

REV.01/21/26.LM

Strips

Page 1 of 5

75R | 75S LED Narrow Strip

FIXTURE PERFORMANCE DATA

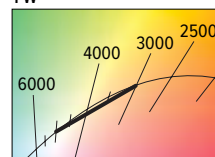
	LED PACKAGE	DELIVERED LUMENS	STANDARD		HE OPTION ⁽¹⁾		AMBIENT TEMPERATURE (°C)		
			WATTAGE	EFFICACY (lm/W)	WATTAGE	EFFICACY (lm/W)	HA OPTION		HA50 OPTION
							w/EM	NO EM	NO EM
2'	L15	1511	10.8	140	—	—	40	40	50
	L25	2470	18.2	136	14.8	167	40	40	50
	L32	2936	21.3	138	17.2	170	40	40	50
	L42	4124	31.4	132	23.0	180	35	40	—
3'	L40	3885	28.2	138	—	—	35	40	50
	L64	6259	48.2	130	—	—	30	35	—
	L30	2916	19.7	148	—	—	40	40	50
	L50	4867	33.0	148	26.7	182	40	40	50
4'	L65	5994	42.3	142	35.8	168	40	40	50
	L85	8098	56.2	144	47.6	170	35	40	—
	L100	9640	68.3	141	56.9	169	30	30	—
	L60	5520	35.3	157	—	—	40	40	50
8'	L100	9568	65.9	145	54.1	177	35	35	50
	L130	12353	87.9	141	70.8	175	35	35	50
	L170	16197	112.4	144	94.8	171	35	35	—
	L200	19281	136.5	141	113.9	169	30	30	—

- ¹ Not available with 90 CRI.
- Photometrics tested in accordance with IESNA LM-79. Results based on 80 CRI, 3500K for single CCT and 4000K for tunable white, average wattage for 120V through 277V input, and 25°C ambient temperature. Actual performance may vary +/-5%.
 - To calculate lumen output in emergency mode, multiply the battery wattage by the efficacy.
 - Use multiplier tables to calculate additional options.
 - HE Option is recommended for POE PR fixtures. Fixture efficacy is typically 10-12% higher than above at same lumen level. Consult factory during project design phase for details.

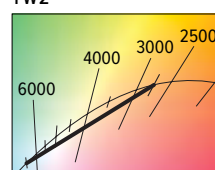
MULTIPLIER TABLE

	COLOR TEMPERATURE			
	CCT	STANDARD	TW	TW2
80 CRI	2700K	0.97	—	0.93
	3000K	0.99	0.95	0.95
	3500K	1.00	0.98	0.98
	4000K	1.03	1.00	1.00
	5000K	1.06	0.96	1.02
	6500K	—	—	1.01
90 CRI	2700K	0.80	—	0.93
	3000K	0.82	0.91	0.95
	3500K	0.83	0.96	0.98
	4000K	0.86	1.00	1.00
	5000K	0.89	1.03	1.03
	6500K	—	—	1.02

TW

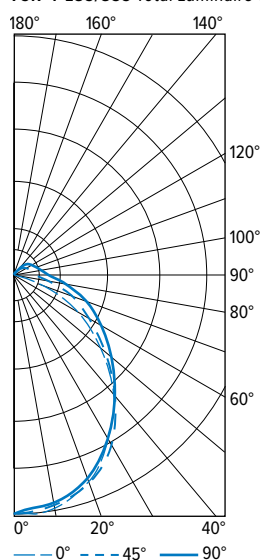


TW2



PHOTOMETRY

75R-4-L85/835 Total Luminaire Output: 8098 lumens; 56.2 Watts | Efficacy: 144 lm/W | 80 CRI; 3500K CCT



VERTICAL ANGLE	HORIZONTAL ANGLE			ZONAL LUMENS
	0°	45°	90°	
0	2594	2594	2594	
5	2622	2585	2553	246
15	2503	2497	2480	703
25	2256	2306	2324	1059
35	1915	2042	2111	1264
45	1481	1673	1824	1281
55	1003	1296	1488	1135
65	620	942	1117	891
75	267	630	775	613
85	63	401	501	378
90	9	311	407	
95	1	249	329	225
105	0	150	219	136
115	0	94	149	83
125	0	53	102	47
135	0	28	63	24
145	0	12	35	10
155	0	6	16	3
165	0	0	4	0
175	0	0	0	0
180	0	0	0	

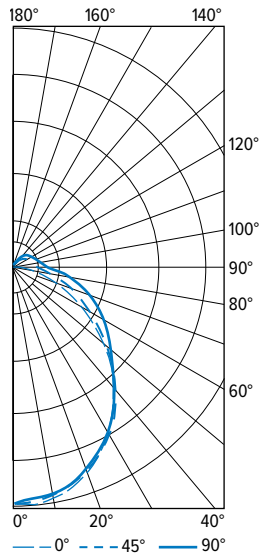
LUMEN SUMMARY	ZONE	LUMENS	% FIXTURE
	0 - 30	2008	25
	0 - 40	3272	40
	0 - 60	5688	70
	0 - 90	7570	94
	90 - 120	443	6
	90 - 150	524	7
	90 - 180	527	7
	0 - 180	8098	100

PHOTOMETRY CONTINUED ON NEXT PAGE.



75R | 75S LED Narrow Strip

75S-4-L85/835 Total Luminaire Output: 8098 lumens; 56.2 Watts | Efficacy: 144 lm/ W | 80 CRI; 3500K CCT

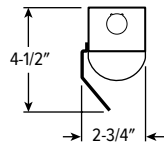


VERTICAL ANGLE	HORIZONTAL ANGLE			ZONAL LUMENS
	0°	45°	90°	
0	2732	2732	2732	
5	2756	2720	2682	258
15	2633	2611	2579	734
25	2351	2362	2323	1083
35	1969	2010	1965	1247
45	1516	1554	1583	1209
55	1053	1160	1291	1051
65	618	840	1022	826
75	270	542	745	563
85	47	323	491	332
90	0	246	390	
95	0	230	344	223
105	0	200	291	185
115	0	171	256	149
125	0	139	216	110
135	0	96	166	71
145	0	58	113	38
155	0	36	63	16
165	0	17	31	4
175	0	0	0	0
180	0	0	0	

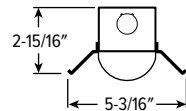
LUMEN SUMMARY	ZONE	LUMENS	% FIXTURE
	0 - 30	2075	26
	0 - 40	3321	41
	0 - 60	5581	69
	0 - 90	7301	90
	90 - 120	557	7
	90 - 150	777	10
	90 - 180	797	10
	0 - 180	8098	100

SPECIAL REFLECTOR OPTIONS

R1015



R1172



Reflectors ordered and shipped separately. Cannot be used with wireguard accessories. To remove reflector, first remove the lens.

Example: **R1172-4-75LED REFL**

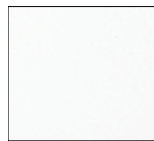
QUICK-CONNECT OPTIONS

Note: Quick-connect wiring required for row mounting. All QC harnesses contain (5) 16ga conductors plus ground.

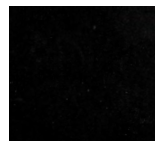
DESIGNATION	NUMBER OF 16GA WIRES FACTORY CONNECTED (EXCLUDING GROUND)	WIRE COLOR/POWER SUPPLY FACTORY CONNECTIONS	TYPICAL USE
QCBW	2	Black, White	On/off switching (DRV) or line voltage dimming (DIM LINE)
QCRW	2	Red, White	Alternating circuits on/off switching (DRV) or line voltage dimming (DIM LINE)
QCBRW	3	Black, Red, White	On/off switching (DRV) or line voltage dimming when equipped with EM battery packs
QCBW/PK	4	Black, White, Purple, Pink	Single circuit with 0-10V low voltage dimming (DIM)
QCRW/PK	4	Red, White, Purple, Pink	Alternating circuits on/off switching with 0-10V low voltage dimming (DIM)
QCBRW/PK	5	Black, Red, White, Purple, Pink	On/off switching when equipped with EM battery packs and 0-10V dimming (DIM)
QCBW/RPK	5	Black, White, Red, Purple, Pink	On/off switching with 0-10v dimming and 0-10v tunable using shared common
QCUU	N/A	N/A	QC harness passes through fixture, but is not connected to it

FINISH OPTIONS

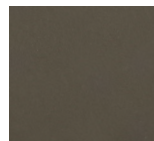
WHITE



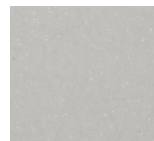
BLACK



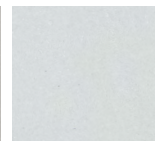
BRONZE



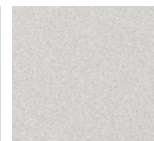
NICKEL



SILVER



ALUM



RAL# _____



For custom color, please specify RAL code or a manufacturer code with description. All custom colors other than RAL require four sample swatches, minimum 1" square.



H.E. Williams, Inc.

Carthage, Missouri

www.hew.com

417-358-4065

Designed and Manufactured in the USA

Information contained herein is subject to change without notice.

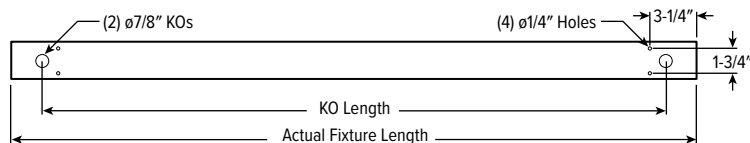
REV.01/21/26.LM

Strips
Page 3 of 5

75R | 75S LED Narrow Strip

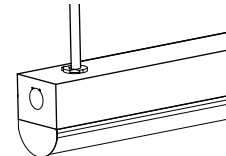
FIXTURE DETAILS

BACKVIEW



	7/8" KOs	ACTUAL FIXTURE LENGTH
2'	18-3/8"	22-1/2"
3'	29-1/2"	33-9/16"
4'	40-1/2"	44-5/8"
8'	85-1/8"	89-1/4"

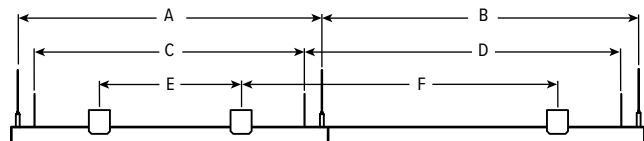
POWER ENTRY



MOUNTING ACCESSORY DETAILS

STAND ALONE

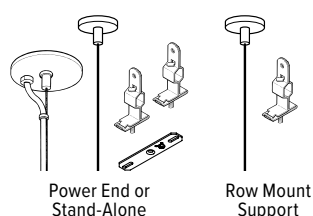
SUBSEQUENT



MOUNTING LENGTH

	AIRCRAFT CABLE		VBY HANGER		315 SPACER	
	A	B	C	D	E	F
2'	21-1/2"	22-1/2"	19"	22-1/2"	10"	22-1/2"
3'	32-1/2"	33-9/16"	30-1/16"	33-9/16"	21"	33-9/16"
4'	43-5/8"	44-5/8"	41-1/4"	44-5/8"	32"	44-5/8"
8'	88-3/16"	89-1/4"	85"	89-1/4"	77"	89-1/4"

STANDARD HARDWARE FOR SUSPENDED PRODUCT (Grid and Hardpan)



Notes:

- Fixtures are provided with adjustable length aircraft cables and mounting hardware, must specify.
- Electrical supply is brought into the feeder fixture, either as part of a row or as a stand-alone unit. Joiner fixtures complete the row.
- The feeder kits are standard with a 5" canopy to cover the junction box and a 2" canopy at the non-feed point. No J-box is required at non-feed points.
- Cable kit provides 10/32 male thread for connection to fixture.

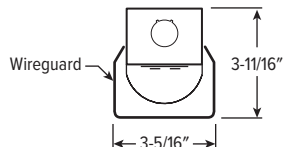
CORD FOR SUSPENDED PRODUCT

Units specified with aircraft cable require cord. Please specify cord type using ordering information below. Long fixture rows may require multiple feed points based on 18ga conductor size.

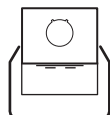
EXAMPLE: S2438D/W				
CORD TYPE	LENGTH	# OF COND.	WIRE SIZE	COLOR
S	24 24"	3	8D 18ga	/W White /B Black
	48 48"	4		
	96 96"	5 ⁽¹⁾		
		6 ⁽¹⁾		

¹ Includes (2) 22ga purple & pink dimming conductors

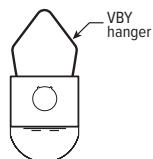
WG-75 75R



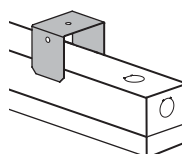
75S



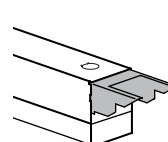
VBY



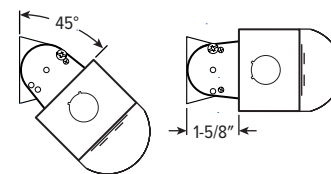
315



RA-75

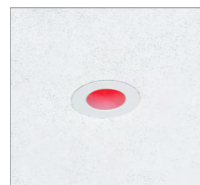


45AMB



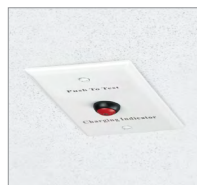
REMOTE MOUNT BATTERY DETAILS

EM/10WRM/RTS



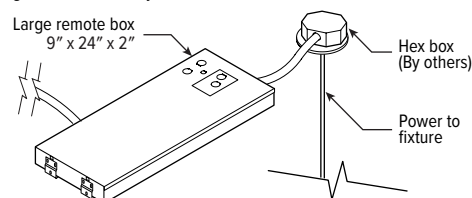
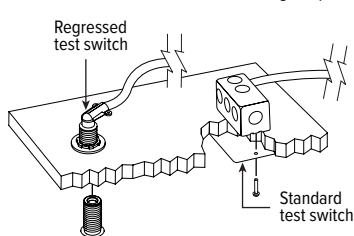
Regressed test switch
ø1-3/4"

EM/10WRM



Standard test switch
2-3/4" x 4-1/2"

Max remote distance is 50' including suspension length, connection by others.



H.E. Williams, Inc.

Carthage, Missouri

www.hew.com

417-358-4065

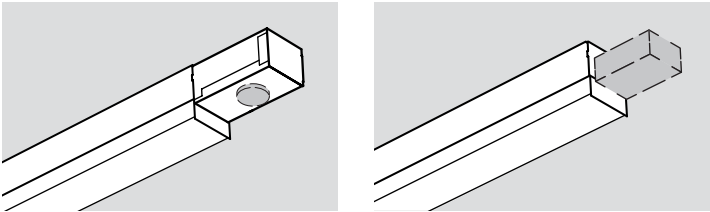
Designed and Manufactured in the USA

REV.01/21/26.LM

Strips
Page 4 of 5

75R | 75S LED Narrow Strip

SENSOR & NODE PLACEMENT DETAILS



ADDITIONAL DRIVER OPTIONS

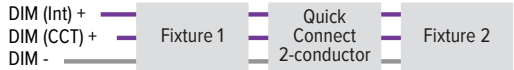
Note: Restrictions may apply, consult product builder at hew.com/product-builder

CATALOG NUMBER	DESCRIPTION
DRV ⁽¹⁾	Driver without external dimming wires prewired for non-dimming applications
DIM	Driver with external dimming wires prewired for 0-10V low voltage applications (tunable white: (1) 0-10V signal controls dimming and (1) 0-10V signal controls CCT)
DIM1	1% driver with external dimming wires prewired for 0-10V low voltage applications
DIM LINE ⁽¹⁾	Line voltage dimming driver (TRIAC and ELV compatible, 120V only)
DIM TRC ⁽¹⁾	Line voltage dimming driver (TRIAC compatible, 120V only)
DA	Driver with 12V auxiliary power, without external dimming wires (not available with 347V)
DSR	DALI-2 sensor-ready driver without external dimming wires (Not available with 347V. Static CCTs use D4i DALI-2 driver)
DALI	DALI dimming driver
DMX	Driver prewired for DMX applications
SD40 ⁽¹⁾	40% step-dimming driver
SD50 ⁽¹⁾	50% step-dimming driver
LDE1 ⁽¹⁾	Lutron Hi-lume 1% EcoSystem dimming driver
LD2	Lutron DALI-2 digital driver, 1%
PoE PR	Power over Ethernet-ready, fixture powered and controlled by remote UL- or CSA-listed PoE driver

¹ Single CCT only.

TUNABLE WHITE DRIVER DETAILS

DIM



DMX



DALI



LD2

