

CATALOG #: \_\_\_\_\_

TYPE: \_\_\_\_\_

PROJECT: \_\_\_\_\_

**FEATURES**

- Tunable white from 3000K to 5000K CCT, minimum 80 CRI
- Small fixture profile allows inconspicuous placement in coves or confined spaces
- Round and square lensed fixtures provide a clean look for architectural environments
- Row applications produce continuous light with minimal interruption between fixtures
- Diffuse acrylic lens on 75R and 75S enhances uniformity and minimizes glare
- Variety of mounting accessories for surface and suspended applications
- Special reflectors are available to provide precise light distribution (75 only)
- Maximize energy savings with efficacies as high as 132 lm/W
- Made Right Here® in the USA

**SPECIFICATIONS**

- HOUSING – 22-gauge die-formed C.R.S.
- FINISH – 92% minimum average reflective white polyester powder coat bonded to phosphate-free, multi-stage pretreated metal. All parts painted after fabrication to facilitate installation, increase efficiency, and inhibit corrosion.
- ELECTRICAL – High quality mid-power LED boards. L70 >50,000 hours per IES TM-21. Tunable White products use LEDs of multiple shade of white from single-CCT products at the same CCT. All CCTs are within 3 MacAdam ellipses.
- MOUNTING – NEMA Type “G”. Surface mount and drywall kit accessories available, ordered separately.
- MOUNTING – Surface (ceiling or wall) or suspended (hanging hardware required).
- LISTINGS – cETLus conforms to UL STD 1598. Certified to CAN/CSA STD C22.2 No. 250.0. Suitable for damp locations.
- WARRANTY – 5-year limited warranty, see [hew.com/warranty](http://hew.com/warranty).

**ORDERING EXAMPLE: 75 - 4 - L75/8TW - OPTIONS - DALI - UNV**

**ORDERING INFO**

SERIES	LENGTH <sup>[1]</sup>	LUMENS <sup>[2]</sup>	COLOR	OPTIONS <sup>[3]</sup>	
75	2 2'	2'	8TW Tunable white (80 CRI, 3000K-5000K)	EM/7WRM Remote mount 7-watt emergency battery <sup>[6]</sup>	
75R	4 4'	L25 2,500lm		EM/10WLP Low-profile 10-watt emergency battery <sup>[7]</sup>	
75S	8 8'	4'		EM/10WRM Remote mount 10-watt emergency battery <sup>[8]</sup>	
		L40 4,000lm		(L__)	Additional lower lumen packages available. <sup>[9]</sup>
		L53 5,300lm			Example: 6,500 nominal lumens = 75-4-L75/8TW-(L65).
		L75 7,500lm <sup>[4]</sup>		WG-75 11-gauge white powder coat wireguard	
		8'	L80 8,000lm	315 1-1/2" ceiling spacer	
		L106 10,600lm	VBY (2) Y-hangers		
		L150 15,000lm <sup>[5]</sup>	VBY-2 (2) Y-hangers and (2) 2' chains		
			RA-75 Row aligner <sup>[10]</sup>		
			45AMB (2) 45° adjustable mounting brackets <sup>[11]</sup>		
				<b>OCCUPANCY SENSOR</b>	
				OCCWS FSP-311-L2-120/277 Digital high/low passive infrared with L2 lens, end mount, 120V or 277V <sup>[12]</sup>	

**AIRCRAFT CABLES (EXAMPLE: ACF/D48) <sup>[13]</sup>**

Prefix	Type	Length
ACF/	Feeder	D 1" grid & hardpan 24 24"
ACJ/	Joiner	N 9/16" grid 48 48"
		S Slot grid 96 96"

CONTROL <sup>[14]</sup>	VOLTAGE
DALI Driver prewired for DALI applications	120 120V 277 277V
DIM Dimming driver with (1) 0-10V signal to control dimming and (1) 0-10V signal to control CCT	UNV 120-277V
DMX Driver prewired for DMX applications	
PSQ Lutron T-Series 2-channel tunable white 1%.	

**NOTES**

- <sup>1</sup> For actual length, see page 3 for FIXTURE DETAILS
- <sup>2</sup> Lumen output based on 4000 CCT. Actual lumens may vary +/-5%, see page 2 for FIXTURE PERFORMANCE DATA.
- <sup>3</sup> See page 4 for FINISH OPTIONS. See page 3 for MOUNTING DETAILS. See page 4 for SPECIAL REFLECTORS.
- <sup>4</sup> Available with 75 only.
- <sup>5</sup> Available with 75 only.
- <sup>6</sup> 120-277V only.
- <sup>7</sup> 4' and 8' only; must specify 120V or 277V.
- <sup>8</sup> 2' and 3' only; must specify 120V or 277V.
- <sup>9</sup> Specify in increments of 100 nominal lumens. Option must be specified with next higher lumen package.
- <sup>10</sup> Required when row mounting with aircraft cables.
- <sup>11</sup> Cord recommended, ordered separately. See page 3 for MOUNTING DETAILS. Field-adjustable up and down in 7-1/2" increments.
- <sup>12</sup> See page 5 for OCCUPANCY SENSOR DETAILS.
- <sup>13</sup> Units specified with aircraft cable require cord. See page 4 for MOUNTING DETAILS. Requires RA-75 row aligner. See page 4 for MOUNTING ACCESSORIES DETAILS.
- <sup>14</sup> See page 4 for CONTROL DETAILS.



## FIXTURE PERFORMANCE DATA

	LED PACKAGE	WATTAGE	75 (NO LENS)		75R & 75S	
			DELIVERED LUMENS	EFFICACY (lm/W)	DELIVERED LUMENS	EFFICACY (lm/W)
2'	L25	19.8	2513	127.0	2362	119.4
	L40	31.0	4051	130.8	3808	122.9
4'	L53	43.2	5430	125.6	5104	118.1
	L75	57.5	7599	132.1	-	-
8'	L80	62.0	8102	130.7	7616	122.9
	L106	86.5	10860	125.6	10208	118.1
	L150	115.1	15199	132.1	-	-

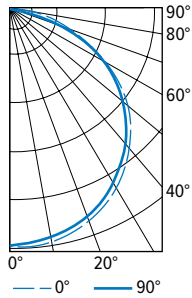
## MULTIPLIER TABLE

CCT	CONVERSION FACTOR	
	LUMENS	WATTAGE
3000K	0.95	1.04
3500K	0.98	1.02
4000K	1.00	1.00
5000K	0.96	1.04

- Photometrics tested in accordance with IESNA LM-79. Results shown are based on 25°C ambient temperature.
- Wattage shown is average for 120V through 277V input.
- Results based on 4000K, 80 CRI, actual lumens may vary +/-5%
- Use multiplier table to calculate additional options.

## PHOTOMETRY

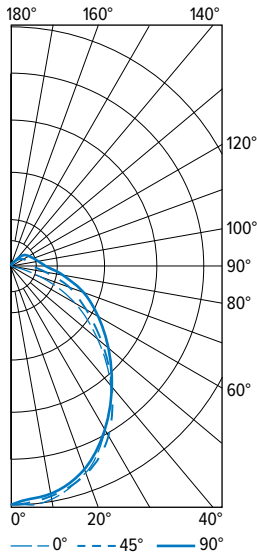
75-4-L75/8TW-DALI Total Luminaire Output: 7599 lumens; 57.5 Watts | Efficacy: 132.1 lm/W | 80 CRI; 4000K CCT



VERTICAL ANGLE	HORIZONTAL ANGLE			ZONAL LUMENS
	0°	45°	90°	
0	2580	2580	2580	
5	2599	2572	2562	245
15	2527	2494	2487	705
25	2373	2338	2325	1081
35	2152	2108	2083	1322
45	1840	1787	1773	1383
55	1456	1408	1390	1260
65	1001	952	934	953
75	518	484	473	518
85	92	103	90	128
90	8	13	8	3

LUMEN SUMMARY	ZONE	LUMENS	% FIXTURE
		0 - 30	2031
	0 - 40	3352	44
	0 - 60	5996	79
	0 - 90	7596	100
	0 - 180	7569	100

75R-4-L53/8TW-DALI Total Luminaire Output: 5360 lumens; 33.7 Watts | Efficacy: 159.0 lm/W | 80 CRI; 4000K CCT



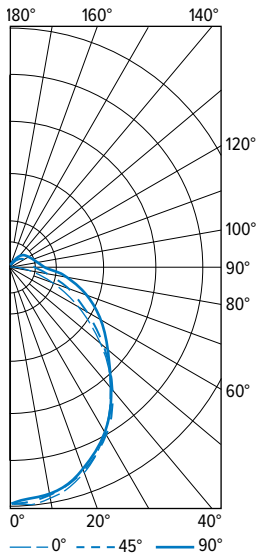
VERTICAL ANGLE	HORIZONTAL ANGLE			ZONAL LUMENS
	0°	45°	90°	
0	1717	1717	1717	
5	1736	1711	1690	163
15	1657	1653	1641	465
25	1493	1527	1538	701
35	1268	1351	1397	837
45	980	1107	1207	848
55	664	858	985	751
65	411	624	739	590
75	177	417	513	406
85	42	266	332	250
90	6	206	270	
95	1	165	218	149
105	0	99	145	90
115	0	62	98	55
125	0	35	67	31
135	0	19	42	16
145	0	8	23	6
155	0	4	11	2
165	0	0	2	0
175	0	0	0	0
180	0	0	0	

LUMEN SUMMARY	ZONE	LUMENS	% FIXTURE
		0 - 30	1329
	0 - 40	2166	40
	0 - 60	3765	70
	0 - 90	5011	94
	90 - 120	293	6
	90 - 150	347	7
	90 - 180	349	7
	0 - 180	5360	100



# 75 tunable WHITE Narrow Strip

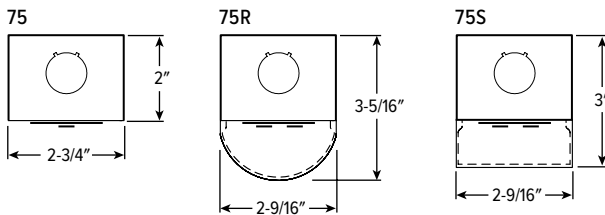
75S-4-L53/8TW-DALI Total Luminaire Output: 5104 lumens; 43.2 Watts | Efficacy: 118.1 lm/W | 80 CRI; 4000K CCT



VERTICAL ANGLE	HORIZONTAL ANGLE			ZONAL LUMENS
	0°	45°	90°	
0	1722	1722	1722	
5	1737	1714	1690	163
15	1660	1646	1625	462
25	1482	1489	1464	683
35	1241	1267	1239	786
45	956	979	998	762
55	663	731	814	662
65	390	529	644	521
75	170	341	469	355
85	30	203	309	209
90	0	155	246	
95	0	145	217	141
105	0	126	183	116
115	0	108	161	94
125	0	87	136	69
135	0	61	104	45
145	0	37	71	24
155	0	23	40	10
165	0	11	19	3
175	0	0	0	0
180	0	0	0	

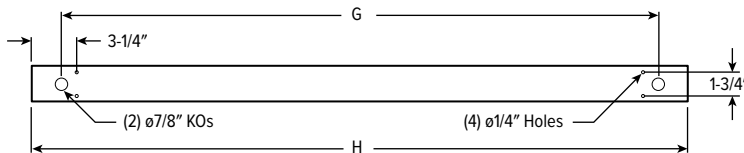
LUMEN SUMMARY	ZONE	LUMENS	% FIXTURE
	0 - 30	1308	26
	0 - 40	2093	41
	0 - 60	3518	69
	0 - 90	4602	90
	90 - 120	351	7
	90 - 150	489	10
	90 - 180	502	10
	0 - 180	5104	100

## CROSS SECTIONS



## FIXTURE DETAILS

### BACKVIEW

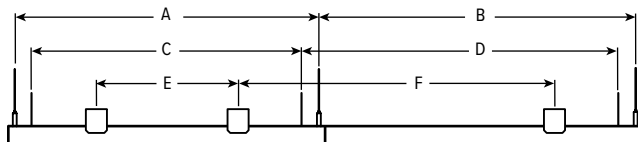


	7/8" KOs (G)	ACTUAL FIXTURE LENGTH (H)
2'	18-3/8"	22-1/2"
4'	40-1/2"	44-5/8"
8'	85-1/8"	89-1/4"

## MOUNTING DETAILS

### STAND ALONE

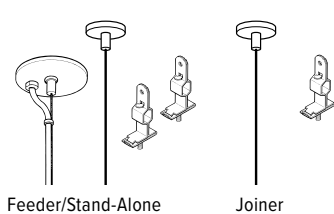
### SUBSEQUENT



### MOUNTING LENGTH

	AIRCRAFT CABLE		VBY HANGER		315 SPACER	
	A	B	C	D	E	F
2'	21-1/2"	22-1/2"	19"	22-1/2"	10"	22-1/2"
4'	43-5/8"	44-5/8"	41-1/4"	44-5/8"	32"	44-5/8"
8'	88-3/16"	89-1/4"	85"	89-1/4"	77"	89-1/4"

## STANDARD HARDWARE FOR SUSPENDED PRODUCT (Grid and Hardpan)



### Notes:

- Fixtures are provided with adjustable length aircraft cables and mounting hardware, must specify.
- Electrical supply is brought into the feeder fixture, either as part of a row or as a stand-alone unit. Joiner fixtures complete the row.
- The feeder kits are standard with a 5" canopy to cover the junction box and a 2" canopy at the non-feed point. No J-box is required at non-feed points.

## CORD FOR SUSPENDED PRODUCT

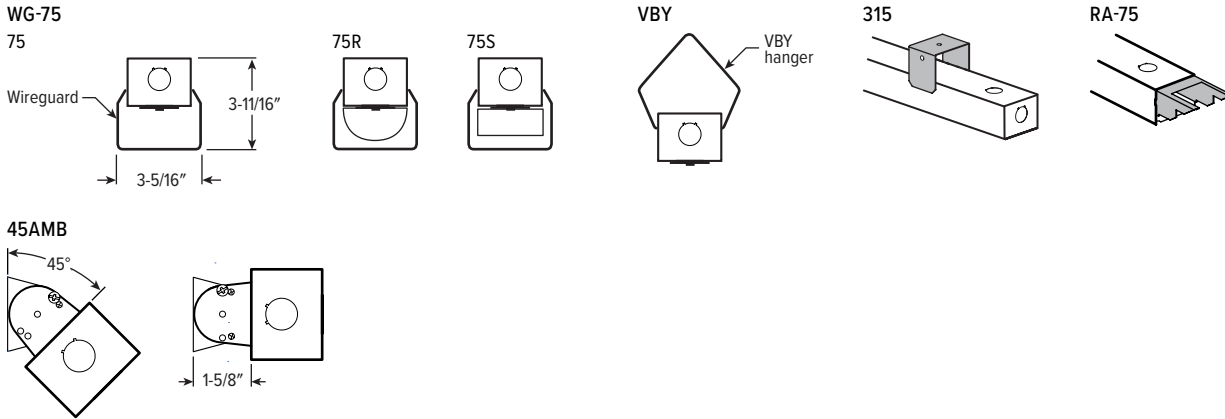
Units specified with aircraft cable require cord. Please specify cord type using ordering information below.

EXAMPLE: S2438/W				
CORD TYPE	LENGTH	# OF COND.	WIRE SIZE	COLOR
S	24 24"	3	8	/W White /B Black
	48 48"	4		
	96 96"	5		

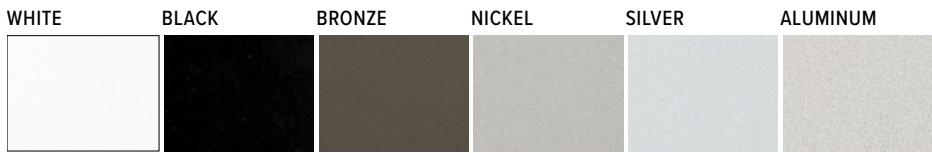


# 75 tunable WHITE Narrow Strip

## MOUNTING ACCESSORIES DETAILS

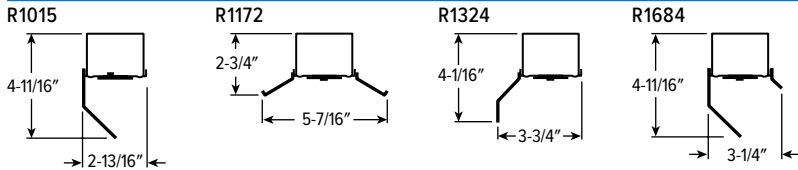


## FINISH OPTIONS



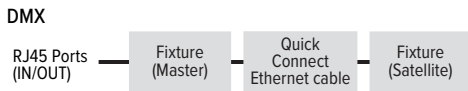
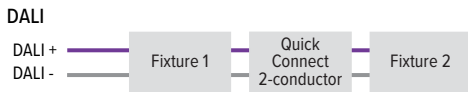
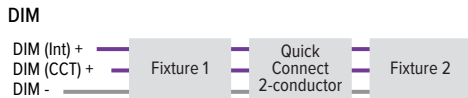
For custom color, please specify RAL code or a manufacturer code with description. All custom colors other than RAL require two sample swatches, minimum 1" square.

## SPECIAL REFLECTORS



Reflectors are ordered separately, only available with 75, cannot be used with wireguard accessories.  
Example: R1172-4-75LED REFL

## CONTROL DETAILS



## OCCUPANCY SENSOR DETAILS

ORDERING EXAMPLE: OCCWS FSP-311-L2-120/277

### FEATURES

- Fully adjustable high and low dimmed light levels.
- Designed for LED fixtures; rated for up to 200,000 on/off cycles.
- Hold-off setpoint with automatic calibration option for convenience and added energy savings.
- Adjustable via sensor configuration app.
- Adjustable time delay and cutoff delay.
- Factory set to 10% dimming at 5 minutes, cutoff at 1 hour.

### SENSOR CONFIGURATION APP

Initial setup and subsequent sensor adjustments are made using the iOS or Android Sensor Configuration App. This app enables adjustment of parameters including high and low modes, sensitivity, time delay, cut off and more. The smartphone app is also used to initiate automatic calibration of the FSP-3x1B ambient light level setpoint. The setpoint is used to hold the controlled lighting off or at low level when there is sufficient daylight. The wireless tool stores an unlimited number of sensor parameter profiles to speed configuration of multiple sensors.

Visit [www.wattstopper.com](http://www.wattstopper.com) for more information.

### LENS COVERAGE PATTERNS

L2 Coverage at 8' mounting height: ø48'

