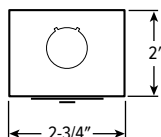
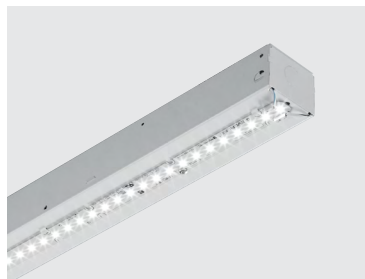


CATALOG #: _____

TYPE: _____

PROJECT: _____



FEATURES

- Deliver scalable, data-driven smart buildings with PoE-enabled fixtures and controls
- Support human-centric design with adaptive, individualized lighting using tunable white light
- Small fixture profile allows inconspicuous placement in coves or confined spaces
- Companion round and square lensed fixtures preserve continuity, see hew.com
- Row applications produce continuous light with minimal interruption between fixtures
- Variety of mounting accessories for surface and suspended applications
- Special reflectors are available to provide precise light distribution
- High-performance up to 146 lm/W
- Optional wireguard provides added protection
- Six standard finish options and a wide selection of custom colors complement the architectural elements of any space
- 2', 4', and 8' lengths available
- Made Right Here® in the USA

SPECIFICATIONS

- HOUSING** – 22-gauge die-formed C.R.S.
- FINISH** – 92% minimum average reflective white polyester powder coat bonded to phosphate-free, multi-stage pretreated metal. All parts painted after fabrication to facilitate installation, increase efficiency, and inhibit corrosion.
- ELECTRICAL** – High-quality mid-power LED boards. L70 >50,000 hours per IES TM-21. Low-voltage DC fixture, to be fed by Class 2 power supply. Tunable White products use LEDs of multiple CCTs and may produce a perceptibly different shade of white from single-CCT products at the same CCT. All CCTs are within 3 MacAdam ellipses.
- MOUNTING** – Surface (ceiling or wall) or suspended (hanging hardware required).
- LISTINGS** –
 - cETLus conforms to UL STD 1598. Certified to CAN/CSA STD C22.2 No. 250.0. Suitable for damp locations
 - Complies with the Buy American Act and other federal regulations. Request certification at hew.com/buy-american
- WARRANTY** – 5-year limited warranty, see hew.com/warranty

SYSTEM REQUIREMENTS

- PoE-ready luminaires are connected to building power systems through network integration and require other components for complete PoE lighting system
- For additional PoE info, see hew.com/poe

ORDERING EXAMPLE: 75 - 4 - P72/835 - OPTIONS - POE PR

ORDERING INFO

SERIES	LENGTH	LUMENS ^[1]	CRI	CCT
75	2 22-1/2"	2'	8 80	27 2700K
	4 44-5/8"	P23 2,300lm	9 90	30 3000K
	8 89-1/4"	P34 3,400lm		35 3500K
		P34 3,400lm		40 4000K
		P34 3,400lm		50 5000K
				TW Tunable white (3000K–5000K)
				TW2 Tunable white (2700K–6500K)

OPTIONS ^[2]

See page 3 for **FINISH OPTIONS**. See page 3 for **SPECIAL REFLECTOR OPTIONS**.

- WG-75** 11-gauge white powder coat wireguard ^[4]
- 315** 1-1/2" ceiling spacer
- VBV** (2) Y-hangers
- VBV-2** (2) Y-hangers and (2) 2' chains
- RA-75** Row aligner ^[5]
- 45AMB** (2) 45° adjustable mounting brackets ^[6]

CONTROL ^[3]

POE PR Power over Ethernet-ready

AIRCRAFT CABLES (EXAMPLE: ACF/D48) ^[7]

Prefix	Type	Length
ACF/	Feeder	D 1" grid & hardpan 24 24"
ACJ/	Joiner	N 9/16" grid 48 48"
		S Slot grid 96 96"

NOTES

- Lumen output based on 80 CRI, 3500K for single CCT and 4000K for TW. Actual performance may vary +/-5%. See page 2 for **FIXTURE PERFORMANCE DATA**.
- See page 3 for **MOUNTING DETAILS**.
- For additional PoE connection details, consult factory.
- Ships separately, field-installed. Not available with special reflectors.

- Required when row mounting with aircraft cables.
- Field-adjustable up and down in 7-1/2" increments. Low-voltage cord recommended, ships separately. See page 3 for **MOUNTING DETAILS**.
- Requires RA-75 row aligner. Must specify low-voltage cord. See page 3 for **MOUNTING DETAILS**.



FIXTURE PERFORMANCE DATA

STATIC WHITE

	LED PACKAGE	DELIVERED LUMENS	WATTAGE	EFFICACY (lm/W)
2'	P23	2273	16.0	142
	P34	3427	25.0	137
4'	P34	3438	24.0	143
	P72	7217	50.0	144
8'	P73	7306	50.0	146
	P145 ¹	14553	100.0	146

- ¹ Fixture contains two nodes, one power drop per node required.
- Photometrics tested in accordance with IESNA LM-79. Results based on 80 CRI, 3500K CCT static white, 4000K CCT tunable white, and 25°C ambient temperature. Actual performance may vary +/-5%.
 - Use multiplier table to calculate additional options.

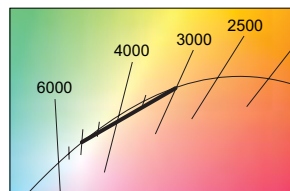
TUNABLE WHITE

	LED PACKAGE	DELIVERED LUMENS	WATTAGE	EFFICACY (lm/W)
2'	P23	2344	17.3	135
	P34	3404	26.6	128
4'	P34	3424	24.6	139
	P72	7255	50.1	145
8'	P73	7316	50.7	144
	P145 ¹	14511	100.1	145

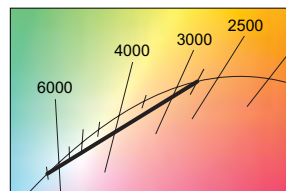
MULTIPLIER TABLE

	COLOR TEMPERATURE			
	CCT	STANDARD	TW	TW2
80 CRI	2700K	0.97	—	0.93
	3000K	0.99	0.95	0.95
	3500K	1.00	0.98	0.98
	4000K	1.03	1.00	1.00
	5000K	1.06	0.96	1.02
	6500K	—	—	1.01
90 CRI	2700K	0.80	—	0.93
	3000K	0.82	0.91	0.95
	3500K	0.83	0.96	0.98
	4000K	0.86	1.00	1.00
	5000K	0.89	1.03	1.03
	6500K	—	—	1.02

TW

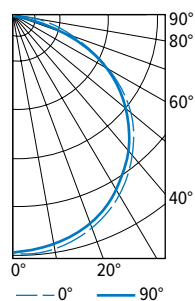


TW2



PHOTOMETRY

75-4-P72/840 Total Luminaire Output: 7217 lumens; 50.0 Watts | Efficacy: 144 lm/W | 80 CRI; 3500K CCT

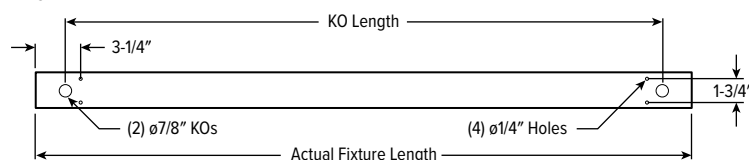


VERTICAL ANGLE	HORIZONTAL ANGLE			ZONAL LUMENS
	0°	45°	90°	
0	2450	2450	2450	
5	2468	2443	2433	233
15	2400	2368	2362	670
25	2253	2220	2208	1026
35	2044	2002	1978	1255
45	1748	1697	1684	1314
55	1383	1337	1320	1197
65	951	905	887	906
75	492	460	449	492
85	88	98	85	122
90	8	12	8	

LUMEN SUMMARY	ZONE	LUMENS	% FIXTURE
	0 - 30	1929	27
	0 - 40	3184	44
	0 - 60	5694	79
	0 - 90	7214	100
	0 - 180	7217	100

FIXTURE DETAILS

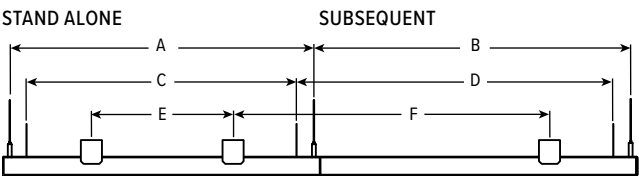
BACKVIEW



	7/8" KOs (G)	ACTUAL FIXTURE LENGTH (H)
2'	18-3/8"	22-1/2"
4'	40-1/2"	44-5/8"
8'	85-1/8"	89-1/4"



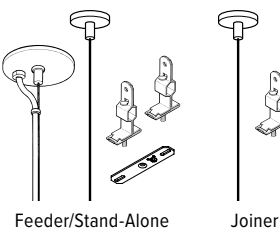
MOUNTING DETAILS



MOUNTING LENGTH

	AIRCRAFT CABLE		VBY HANGER		315 SPACER	
	A	B	C	D	E	F
2'	21-1/2"	22-1/2"	19"	22-1/2"	10"	22-1/2"
4'	43-5/8"	44-5/8"	41-1/4"	44-5/8"	32"	44-5/8"
8'	88-3/16"	89-1/4"	85"	89-1/4"	77"	89-1/4"

STANDARD HARDWARE FOR SUSPENDED PRODUCT (Grid and Hardpan)



Notes:

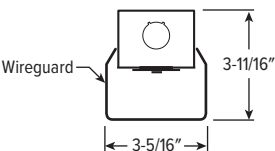
- Fixtures are provided with adjustable length aircraft cables and mounting hardware, must specify.
- Power is brought into the feeder fixture, either as part of a row or as a stand-alone unit. Joiner fixtures complete the row. One power drop per node required.

LOW-VOLTAGE CORD OPTIONS

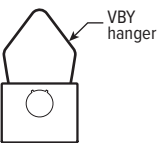
Must specify low-voltage cord when cable mounting.

ORDERING EXAMPLE: P24/W		
CORD TYPE	LENGTH	COLOR
P PoE	24 24"	/W White
	48 48"	/B Black
	96 96"	

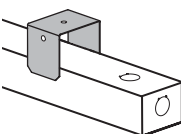
WG-75



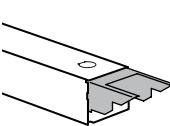
VBY



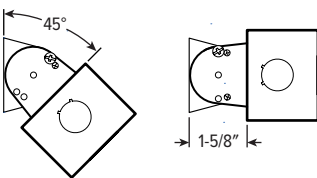
315



RA-75

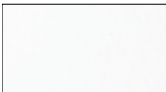


45AMB



FINISH OPTIONS

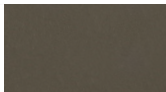
WHITE



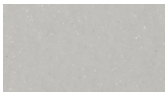
BLACK



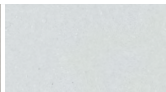
BRONZE



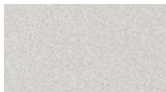
NICKEL



SILVER



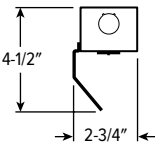
ALUM



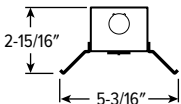
For custom color, please specify RAL code or a manufacturer code with description. All custom colors other than RAL require two sample swatches, minimum 1" square.

SPECIAL REFLECTOR OPTIONS

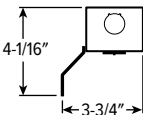
R1015



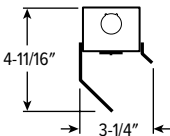
R1172



R1324



R1684



Reflectors ordered and shipped separately. Cannot be used with wireguard accessories.

Example: R1172-4-75LED REFL

