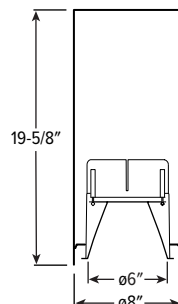


8CR tunable WHITE

8" Cylinder – Round



CATALOG #: _____

TYPE: _____

PROJECT: _____



TrimLock® TwistLock™

ORDERING EXAMPLE: 8CR - TL - 20 - L13/8TW - OPTIONS - WHT - CONTROL/DIM - UNV - OW - CS - TRIM OPTIONS - CM

HOUSING TRIM MOUNT

HOUSING

SERIES	HEIGHT	LUMENS ^[1]	COLOR	OPTIONS	HOUSING FINISH ^[2]
8CR - TL	20 20"	L13 1,300lm L23 2,300lm L42 4,200lm	8TW Tunable white (80 CRI, 2700K-5000K)	EM/10WRM/RTS Remote mount 10-watt emergency battery with regressed test switch ^[3] F Fuse RDB Remote mount control/driver box, galvanized steel ^[4]	ALUM Silver sparkle aluminum BLK Textured black BRZ Textured bronze NKL Textured nickel SLV Textured silver WHT Textured white

CONTROL

See page 3 for CONTROL/ DRIVER DETAILS.

– None
AWNRLutron Athena wireless node integral fixture control, RF only ^[5]

DRIVER

See page 3 for CONTROL/DRIVER DETAILS.

DALI Driver prewired for DALI applications
DIM Dimming driver with (1) 0-10V signal to control dimming and (1) 0-10V signal to control CCT
DMX Driver prewired for DMX applications ^[6]
LD2 Lutron DALI-2 digital driver, 1%

VOLTAGE

UNV 120-277V

TRIM

TRIM TYPE	DISTRIBUTION	REFLECTOR FINISH ^[7]	Lens Trim Types	TRIM OPTIONS
O Open reflector	See page 2 for BEAM ANGLE.	Open Trim Types	CS Clear semi-specular powder coat	AD Diffuse acrylic lens ^[10]
F Open reflector with frosted top diffuser	W Wide	CS Clear semi-specular anodize	WH White texture powder coat	PD Diffuse 1/8" polycarbonate lens ^[11]
L Flush lens	M 35° Medium ^[8]	SG Satin-glow anodize	BL Black texture powder coat	
R Regressed lens	N 10° Narrow ^[9]	CG Champagne gold anodize	BZ Bronze texture powder coat	
		PW Pewter anodize	NK Nickel texture powder coat	
		SPC Clear specular anodize	SV Silver texture powder coat	
		RG Rose gold anodize	AL Silver sparkle aluminum	
		WH White texture powder coat		
		BL Black texture powder coat		

MOUNTING

MOUNTING TYPE ^[12]

CM__ Adjustable aircraft cable mount, 24", 48", 96", or 144" only, must specify. Example: 24" cable = CM24 ^[13]
PM__ Pendant mount. Example: 24" pendant = PM24 ^[14]
SM TwistLock surface mount to octagonal J-box
WM Wall mount

NOTES

- Lumen output based on O Trim Type, W Distribution and CS Reflector Finish, 80 CRI/4000K CCT. Actual performance may vary +/-5%, see page 2 for FIXTURE PERFORMANCE DATA
- See page 3 for HOUSING FINISH DETAILS.
- Max remote distance 50', including suspension length. Large remote box provided. Specify CEC in the option code when California Energy Commission regulations are required. See page 3 for EMERGENCY BATTERY DETAILS.
- Painted driver box available, specify RDB/BLK or RDB/WHT.
- LD2 Driver only. SM Mounting Type installed in remote box, must specify RDB Option.
- Installed in medium remote box, must specify RDB Option.
- See page 4 for REFLECTOR FINISH DETAILS.
- Not available with L42 lumen stop when specified with L or R Trim Types.
- Not available with L42 lumen stop when specified with L or R Trim Types.
- Not available with O or F Trim Types. W Distribution only.
- Not available with O or F Trim Types. W Distribution only.
- See page 4 for MOUNTING DETAILS.
- Canopy painted white unless specified otherwise. Must specify cord. See page 4 for CORD OPTIONS.
- Specify length in 1" increments, minimum 6". Canopy and pendant match fixture housing color unless specified otherwise.



8CR tunable WHITE

8" Cylinder – Round

FEATURES

- Support human-centric design with adaptive, individualized lighting using tunable white light
- Superior optical control with beams as narrow as 10° and field changeable optics as wide as 65°
- Complement the architectural elements of any space with a multitude of housing, trim and cord finishes
- Limitless application opportunities via pendant, cable, wall and ceiling mounts
- Ensure a simple and secure installation with TwistLock™ surface mount technology
- Precision-engineered extruded aluminum housing and die-cast aluminum trim face for clean aesthetic
- Wireless in-fixture control solutions available
- Made Right Here® in the USA

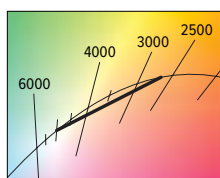
SPECIFICATIONS

- HOUSING – Extruded aluminum with die-cast aluminum accent ring.
- FINISH – Polyester powder coat bonded to phosphate-free, multi-stage pretreated metal. All parts painted after fabrication to facilitate installation, increase efficiency, and inhibit corrosion.
- TRIMLOCK – Innovative TrimLock® reflector retention system ensures trim remains secure.
- OPEN REFLECTOR – Low-iridescent anodized aluminum. Clear semi-specular finish standard.
- LENSED TRIM – Die-cast aluminum frame with micro-prismatic, acrylic lens.
- ELECTRICAL – High-performance Class 2 LED array. Modular quick-connect plug for easy field-connection of LED light assembly to driver. Reported L70>50,000 hours. Tunable White products use LEDs of multiple CCTs and may produce a perceptibly different shade of white from single-CCT products at the same CCT. All CCTs are within 3 MacAdam ellipses.
- MOUNTING – Surface, cable, pendant, or wall mount. Indoor applications only. Max weight 14 lbs.
- LISTINGS –
 - cSAsus conforms to UL STD 1598 and UL STD 8750. Certified to CAN/CSA STD C22.2 No. 250.0. Suitable for dry and damp locations.
 - Build America, Buy America (BABA) and Buy American Act (BAA) compliant. Request certification at hew.com/buy-american
- WARRANTY – 5-year limited warranty, see hew.com/warranty

FIXTURE PERFORMANCE DATA

	DISTRIBUTION	WATTAGE	OPEN REFLECTOR TRIM TYPE		FLUSH LENS TRIM TYPE		REGRESSED LENS TRIM TYPE	
			DELIVERED LUMENS	EFFICACY (lm/W)	DELIVERED LUMENS	EFFICACY (lm/W)	DELIVERED LUMENS	EFFICACY (lm/W)
L13	W	14.6	1320	90.4	1135	78.0	1098	75.5
	M	14.6	1317	90.2	1220	83.6	1183	81.0
	N	14.6	1345	92.1	1231	84.5	1199	82.4
L23	W	24.0	2357	98.0	1964	81.7	1900	79.0
	M	24.0	2285	95.0	2117	88.0	2059	85.6
	N	24.0	2187	90.9	2129	88.5	2075	86.3
L42	W	44.9	4304	96.0	3596	80.2	3480	77.6
	M	44.9	4173	93.0	–	–	–	–
	N	44.9	3994	89.0	–	–	–	–

- Photometrics tested in accordance with IESNA LM-79. Results based on CS (O Trim Type) or WH (L and R Trim Types) Reflector Finish, W Distribution, 80 CRI/4000K CCT, average wattage for 120V input, and 25°C ambient temperature. Actual performance may vary +/-5%.
- To calculate lumen output in emergency mode, multiply the battery wattage by the efficacy.
- Use multiplier tables to calculate additional options.



BEAM ANGLE

	TRIM TYPE [2]			
	O	F	L	R
W	65°	70°	55°	55°
M	35°	35°	35°	35°
N	10°	20°	25°	25°

MULTIPLIER TABLES

COLOR TEMPERATURE		
CCT	LUMENS	WATTS
2700K	0.83	1.03
3000K	1.00	1.00
3500K	0.99	0.99
4000K	1.00	1.00
5000K	0.98	1.03

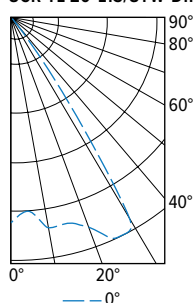
TRIM OPTIONS	
CATALOG NUMBER	CONVERSION FACTOR
F	0.75
AD	0.85
PD	0.85

- ¹ Distribution will also be affected, consult factory.
² Beam angle based on CS or WH Reflector Finish.

	REFLECTOR FINISH	
	CATALOG NUMBER	CONVERSION FACTOR
O TRIM	CS	1.00
	SG ^[1]	0.92
	GD	0.93
	CG	0.96
	PW	0.86
	SPC	1.02
	RG	0.88
R TRIM	WH ^[1]	0.89
	BL ^[1]	0.47
	WH	1.00
	CS ^[1]	0.98
	BL ^[1]	0.79
	BZ ^[1]	0.76
	NK ^[1]	0.81
	SV ^[1]	0.81
	AL ^[1]	0.86

PHOTOMETRY

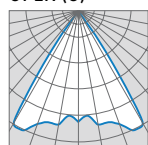
8CR-TL-20-L13/8TW-DIM-UNV-OW-CS Total Luminaire Output: 1320 lumens; 14.6 Watts | Efficacy: 90.4 lm/W | 80.0 CRI; 4000K CCT



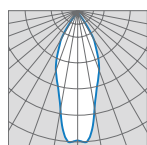
	VERTICAL ANGLE	HORIZONTAL ANGLE	ZONAL LUMENS
		0°	
CANDLEPOWER DISTRIBUTION	0	1110	
	5	1049	100
	15	1152	327
	25	1316	609
	35	401	252
	45	31	24
	55	9	8
	65	1	1
	75	0	0
	85	0	0
	90	0	0

LUMEN SUMMARY	ZONE	LUMENS	% FIXTURE
	0 - 40	1288	98
	0 - 60	1320	100
	0 - 90	1320	100
	0 - 180	1320	100

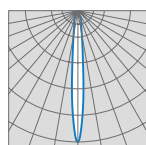
OPEN (O)



65° Wide

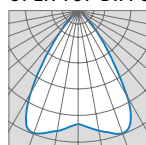


35° Medium

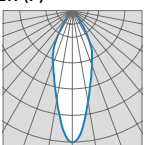


10° Narrow

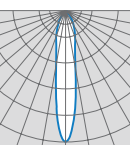
OPEN TOP DIFFUSER (F)



70° Wide

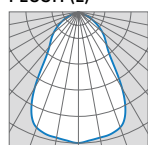


35° Medium

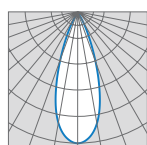


20° Narrow

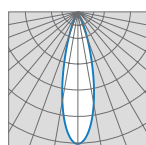
FLUSH (L)



55° Wide

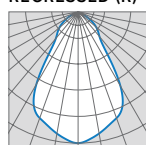


35° Medium

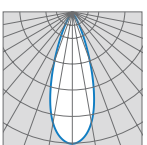


25° Narrow

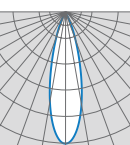
REGRESSED (R)



55° Wide



35° Medium



25° Narrow



H.E. Williams, Inc.

Carthage, Missouri

www.hew.com

417-358-4065

Designed and Manufactured in the USA

Information contained herein is subject to change without notice.

REV.01/10/25.JL

Cylinders
Page 2 of 4

8CR tunable WHITE

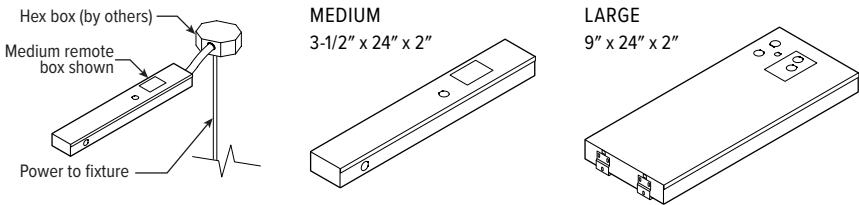
8" Cylinder – Round

CONTROL/DRIVER DETAILS

CONTROL/DRIVER	DESCRIPTION	RDB DETAILS BY LUMEN STOP			
		L13	L23	L42	w/EM
DIM	Dimming driver with (1) 0-10V signal to control dimming and (1) 0-10V signal to control CCT prewired for low voltage applications	O M	O M	O M	R L
DMX	Driver prewired for DMX applications	R M	R M	R M	R L
DALI	DALI dimming driver	O M	O M	O M	R L
LD2	Lutron DALI-2 digital driver, 1%	O M	O M	O M	R L
AWNRLD2	Lutron Athena wireless node integral fixture control, RF only, for use with DALI-2 digital driver, 1%	O M	O M	O M	R L

REMOTE MOUNT DETAILS

Max remote distance is 50' including suspension length, connection by others. Must be room-side accessible for maintenance.



REMOTE MOUNT KEY

O M	RDB Optional, Medium Box
R M	RDB Required, Medium Box
R L	RDB Required, Large Box

DIM



DALI



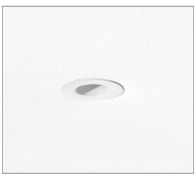
DMX



LD2

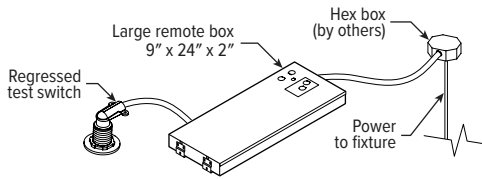


EMERGENCY BATTERY DETAILS



Regressed test switch
ø1-3/4"

Max remote distance is 50' including suspension length, connection by others.



TRIMLOCK DETAILS

TWIST



PULL

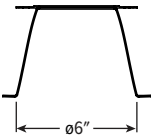


RELEASE

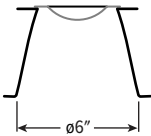


TRIM TYPE DETAILS

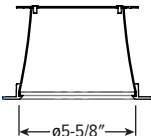
OPEN



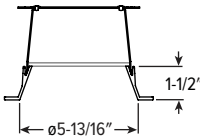
OPEN TOP DIFFUSER



FLUSH

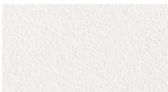


REGRESSED

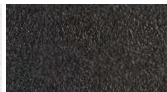


HOUSING FINISH DETAILS

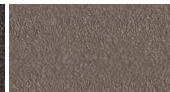
WHITE



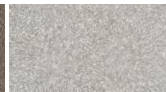
BLACK



BRONZE



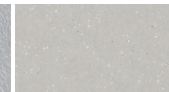
NICKEL



SILVER



ALUM



For custom color, please specify RAL code or a manufacturer code with description. All custom colors other than RAL require two sample swatches, minimum 1" square.



8CR tunable WHITE

8" Cylinder – Round

REFLECTOR FINISH DETAILS

Smooth Finish

SPC

SG

PW

GD

CG

RG

CS

AL

Textured Finish

WH

BL

BZ

NK

SV

MOUNTING DETAILS

PENDANT MOUNT (PM__)



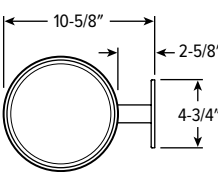
Provided with:

- 38° Swivel canopy
- 3/8" IPS Threaded stem
- Specify length of stem, 6" minimum, 24" default length

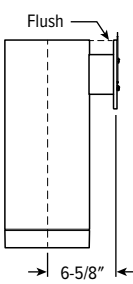
WALL MOUNT (WM)



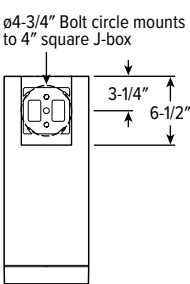
TOP VIEW



SIDE VIEW



BACK VIEW



SURFACE MOUNT (SM)



TwistLock™

Simple lift-and-twist mounting secures fixture to J-box.

CABLE MOUNT (CM__)



Provided with:

- Adjustable length aircraft cable, must specify length in 24", 48", 96", or 144" inches.
- 18-gauge cord, see Cord Options for ordering info.
- One 5" canopy
- T-bar clip with 1/4-20 stud
- Hard ceiling anchor provided by others

CORD OPTIONS

Must specify cord when cable mounting.

ORDERING EXAMPLE: S2438/W				
CORD TYPE	LENGTH	# CONDUCTORS	WIRE SIZE	COLOR
S Straight	24 24"	3 3	8 18-gauge	Standard
	48 48"	4 4		/W White
	96 96"	5 5		/B Black
		6 6		Braided ⁽¹⁾
				/WH White
				/BL Black
				/BR Brass
				/AE Aegean Blue
				/RE Red
				/SV Silver
				/GU Gunmetal
				/NK Nickel
				/GR Gray

¹ (5) conductors cord only.

COLOR DETAILS

Additional colors may be available, consult factory.

