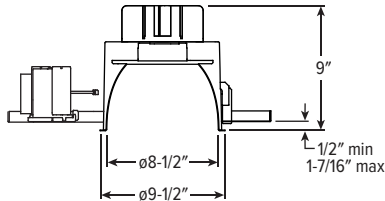
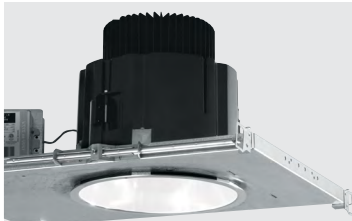


# 8DR dim to **WARM** 8" Downlight – Round



CATALOG #: \_\_\_\_\_

TYPE: \_\_\_\_\_

PROJECT: \_\_\_\_\_

## NEW CONSTRUCTION AND REMODEL

ORDERING EXAMPLE: 8DR - L18/9DW - OPTIONS - DIM1 - 120 - OW - CS - TRIM OPTIONS - N - F1



### HOUSING

SERIES	LUMENS <sup>[1]</sup>	COLOR	OPTIONS	CONTROL	VOLTAGE
8DR	L6 600lm L11 1,100lm L18 1,800lm	9DW Dim to warm (95 CRI, 1800K – 3000K)	See page 3 for <b>EMERGENCY BATTERY OPTIONS</b> . SCA_ Sloped ceiling adapter <sup>[2]</sup> ATH Airtight construction F Fuse CP Chicago plenum (CCEA) <sup>[3]</sup> SDT Stepdown transformer <sup>[4]</sup> TC Adjustable mounting arms for 1-1/2" - 2-1/4" thick ceilings	DIM1 1% dimming driver (0-10V signal to control dimming and CCT) LUT Lutron Ecosystem enabled	120 120V 277 277V 347 347V <sup>[5]</sup>

### TRIM <sup>[6]</sup>

TRIM TYPE	DISTRIBUTION <sup>[7]</sup>	REFLECTOR FINISH	TRIM OPTIONS
O Open reflector	W 65° Wide M 45° Medium N 35° Narrow	CS Clear semi-specular anodize SG Satin-glow anodize GD Gold anodize CG Champagne gold anodize PW Pewter anodize SPC Clear specular anodize RG Rose gold anodize WH White texture powder coat BL Black texture powder coat	MWT Textured white trim flange <sup>[8]</sup> WET/CC Wet location, covered ceiling listed AM Anti-microbial <sup>[9]</sup>

### MOUNTING

MOUNTING TYPE <sup>[10]</sup>	MOUNTING HARDWARE <sup>[11]</sup>
N Open pan for new construction I IC-rated enclosure for new construction <sup>[12]</sup> R Remodel kit <sup>[13]</sup>	F1 Integral 2-position fixed pan bracket, universal bar hanger included <sup>[14]</sup> BA1 Adjustable butterfly pan bracket, bar hanger not included <sup>[15]</sup> CA1 Adjustable caterpillar pan bracket, universal bar hanger included <sup>[16]</sup>

### NOTES

- <sup>1</sup> Lumen output based on O trim type, W distribution and CS finish, 3000K/95CRI. Actual lumens may vary +/-5%. See page 2 for **FIXTURE PERFORMANCE DATA**.
- <sup>2</sup> 14" aperture, specify degrees of slope in 5° increments, 05°-30°. See page 3 for **SLOPED CEILING ADAPTOR DETAILS**. N Mounting Type only. Not available with ATH or WET/CC Options. Painted white. Other colors available, consult factory.
- <sup>3</sup> I Mounting Type required.
- <sup>4</sup> May be required for 347V, see product builder at [hew.com/product-builder](http://hew.com/product-builder).
- <sup>5</sup> Not available with EM batteries.
- <sup>6</sup> Trim ships separately.
- <sup>7</sup> Beam angle based on CS or WH reflector finish.
- <sup>8</sup> Not available with WH Reflector Finish.
- <sup>9</sup> WH and BL Reflector Finishes only.
- <sup>10</sup> Mounting hardware required (N and I only), ordered separately, see **MOUNTING HARDWARE** ordering info. See page 4 for **MOUNTING TYPE DETAILS**.
- <sup>11</sup> Additional mounting hardware options available. See page 4 for **MOUNTING HARDWARE DETAILS**.
- <sup>12</sup> L6 and L11 lumen packages only. Not available with EM batteries.
- <sup>13</sup> Also used in new construction sheetrock ceilings. Pan-less installation.
- <sup>14</sup> N and I Mounting Types only. I Mounting requires external brackets.
- <sup>15</sup> N Mounting Type only.
- <sup>16</sup> N Mounting Type only.



# 8DR dim to **WARM** 8" Downlight – Round

## FEATURES

- Mimic the comfortable, welcoming glow of incandescent with warm-dimming technology
- Beam angles ranging from 35° narrow to 65° wide for tailored performance
- Open reflector with nine finishes complement interior style
- Contemporary design provides glare-free illumination for a soft ceiling appearance
- New construction mounting pan, IC-rated, or pan-less remodel kit available
- Sloped adapter accommodates vaulted ceilings
- Easily adjust mounting arms below ceiling to adapt to a range of ceiling thicknesses

## SPECIFICATIONS

- HOUSING** – Die-cast aluminum trim housing with forged aluminum heat sink. Galvanized steel splice compartment with driver mounting plate/enclosure. Swing-out mounting arms field adjust for ceiling thickness from 1/2" –1-7/16". See Options for additional ceiling thicknesses.
- OPEN REFLECTOR** – Low-iridescent anodized aluminum with 1/2" flange. Clear semi-specular finish standard.
- ELECTRICAL** – High-performance Class 2 C.O.B. LED array. Modular quick-connect plug for easy field-connection of LED light assembly to driver. Reported L70>55,000 hours. Estimated L70 = 200,000 hours.
- MOUNTING** – Recessed. 20 ga. galvanized steel mounting pan for new construction or IC-rated enclosure. Remodel kit option includes receiver bracket hardware.

## LISTINGS –

- cCSAus conforms to UL STD 1598; Certified to CAN/CSA STD C22.2 No. 250.0 for dry and damp locations. LED light assembly conforms to UL 2108 for remote installation.
- Suitable for wet location under covered ceiling when specified with WET/CC option.
- IC-rated for direct contact with insulation when specified with I Mounting Type.
- City of Chicago Environmental Air approved when specified with CP option.
- Complies with ASTM-E283 when specified with ATH option.
- RoHS compliant.
- Complies with the Buy American Act and other federal regulations. Request certification at [hew.com/baa](http://hew.com/baa).
- WARRANTY** – 5-year limited warranty, see [hew.com/warranty](http://hew.com/warranty).

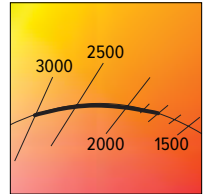
## FIXTURE PERFORMANCE DATA

	CCT AT 100% (FULL OUTPUT)	CCT AT 1% (FULL DIM)	DISTRIBUTION	DELIVERED LUMENS	WATTAGE	EFFICACY (lm/W)
L6	3000K	1800K	W	643	13.6	47
M			637	13.6	47	
N			584	13.6	43	
L11			W	1128	23.2	49
M			1117	23.2	48	
N			1023	23.2	44	
L18			W	1847	37.0	50
M			1829	37.0	49	
N			1676	37.0	45	

## MULTIPLIER TABLES

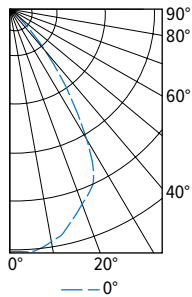
REFLECTOR FINISH	
CATALOG NUMBER	CONVERSION FACTOR
CS	1.00
SG <sup>1</sup>	0.92
GD	0.93
CG	0.96
PW	0.86
SPC	1.02
RG	0.88
WH <sup>1</sup>	0.89
BL <sup>1</sup>	0.47

- Distribution will also be affected, consult factory.
- Photometrics tested in accordance with IESNA LM-79. Results shown are based on 25°C ambient temperature.
- Wattage shown is based on 120V input.
- Results based on 3000K/95CRI, actual lumens may vary +/-5%.
- To calculate lumen output in emergency mode, multiply the battery wattage by the efficacy.
- Use multiplier tables to calculate additional options.



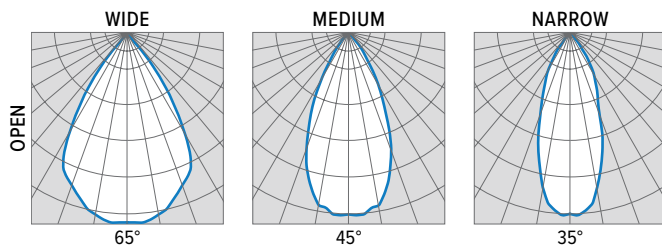
## PHOTOMETRY

**8DR-L18/9DW-OW-CS** Total Luminaire Output: 1847 lumens; 37 Watts | Efficacy: 50 lm/W | 95 CRI; 3000K CCT



CANDLEPOWER DISTRIBUTION	VERTICAL ANGLE	HORIZONTAL ANGLE	ZONAL LUMENS
		0°	
	0	1806	
	5	1817	171
	15	1657	466
	25	1433	642
	35	708	441
	45	111	102
	55	15	14
	65	8	8
75	4	4	
85	1	1	
90	0		

LUMEN SUMMARY	ZONE	LUMENS	% FIXTURE
	0 - 40	1719	93
	0 - 60	1835	99
	0 - 90	1847	100
	0 - 180	1847	100



## REFLECTOR FINISH DETAILS

SPC	SG	PW	GD	CG	RG	CS	WH	BL
Clear specular	Satin glow	Pewter	Gold	Champagne gold	Rose gold	Clear semi-specular	White	Black



# 8DR dim to **WARM** 8" Downlight – Round

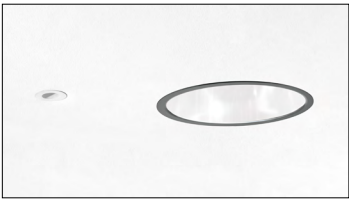
## EMERGENCY BATTERY OPTIONS

Additional limitations apply, see page 1. Specify CEC in the option code when California Energy Commission regulations are required.

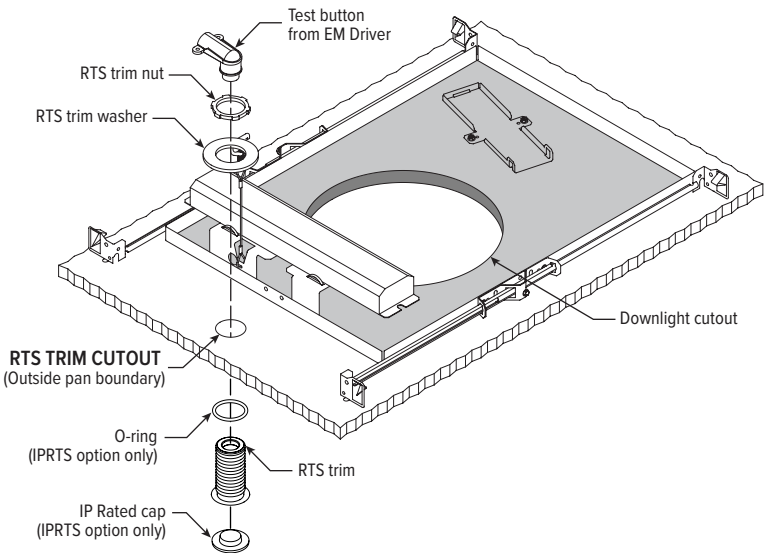
CATALOG NUMBER	DESCRIPTION
EM/7W	7-watt emergency battery
EM/7W/RTS	7-watt emergency battery with regressed test switch <sup>1</sup>
EM/7W/IPRTS	7-watt emergency battery with IP65 rated regressed test switch
EM/10W	10-watt emergency battery
EM/10W/RTS	10-watt emergency battery with regressed test switch <sup>1</sup>
EM/10W/IPRTS	10-watt emergency battery with IP65 rated regressed test switch

<sup>1</sup> Not available with WET/CC Option.

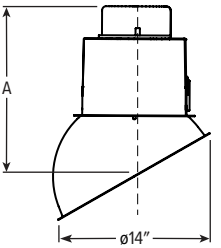
## REGRESSED TEST SWITCH DETAILS



Shown Installed



## SLOPED CEILING ADAPTOR DETAILS



Ceiling cutout: ø14-3/8"

A (HEIGHT)						PLENUM HEIGHT
5°	10°	15°	20°	25°	30°	
13-5/16"	13-3/8"	13-5/16"	13-3/16"	13"	12-5/8"	13-3/4"

30° Shown

## APERTURE ADAPTOR ORDERING INFO

ORDERING EXAMPLE: 4DR - GR - 0575 - WHT			
SERIES	CATALOG NUMBER	CEILING CUTOUT	FINISH
4AR 6AR 4DR 6DR 4DS 6DS 4PR 6PR 4PS 6PS 8DR	GR	Specify ceiling cutout in 1/8" increments. Example: 5.75" = <b>0575</b> See Kit Components for application limits.	CS Clear semi-specular powder coat WH White texture powder coat BL Black texture powder coat

For use with remodel downlights. Additional finishes available, consult factory.  
For limitations and instructions, see [hew.com/aperture-adaptor.pdf](http://hew.com/aperture-adaptor.pdf)

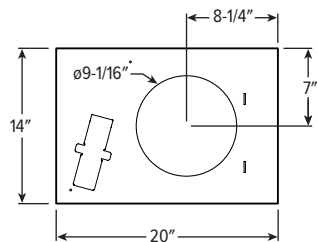


# 8DR dim to **WARM** 8" Downlight – Round

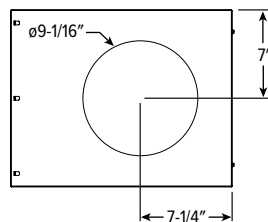
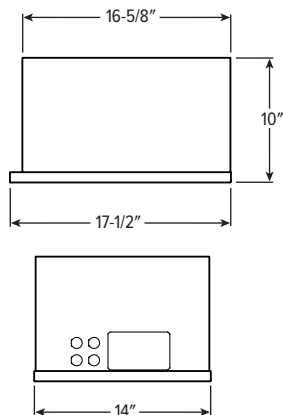
## MOUNTING TYPE DETAILS

Ceiling cutout 9-1/16" for all mounting types.

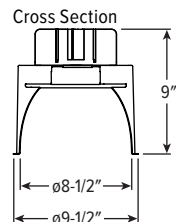
### NEW CONSTRUCTION



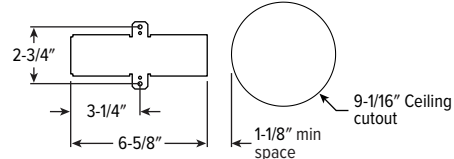
### IC-RATED



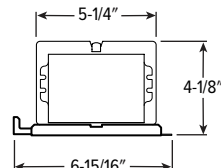
### REMODEL



### Receiver Bracket

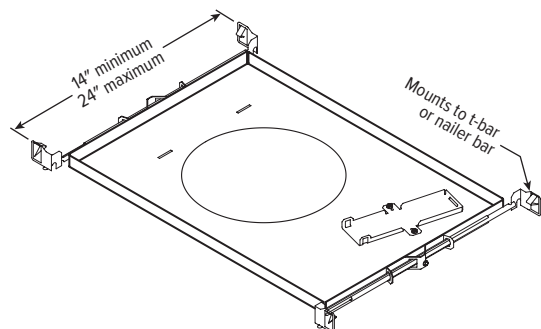


### Driver and Junction Box

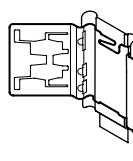


## MOUNTING HARDWARE DETAILS

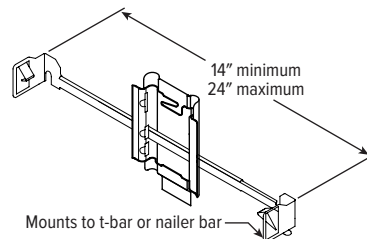
**F1** Integral 2-position fixed pan bracket, universal bar hanger included



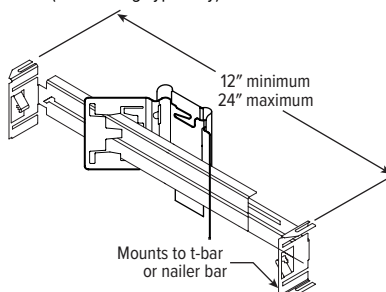
**BA1** Adjustable butterfly pan bracket, bar hanger not included (N Mounting Type only)



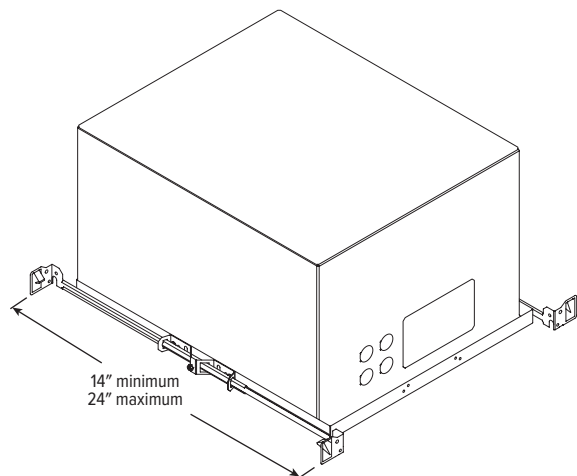
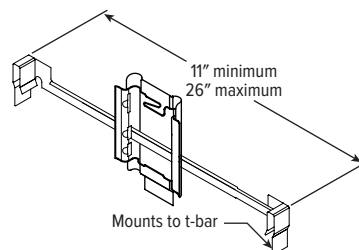
**CA1** Adjustable caterpillar pan bracket, universal bar hanger included (N Mounting Type only)



**BA2** Adjustable butterfly pan bracket, heavy-duty universal bar hanger included (N Mounting Type only)



**CA2** Adjustable caterpillar pan bracket, t-bar hanger included (N Mounting Type only)



F1 with I Mounting Type

