

Shown with mounting bracket

CATALOG #: \_\_\_\_\_

Type: \_\_\_\_\_

PROJECT: \_\_\_\_\_

## FEATURES

- Complementary to Williams' AI3 Series, the decorative and versatile AIW provides functional indirect illumination
- Non-perforated housing or 33% open perforation beneath LEDs offers choice of appearance
- Translucent matte white acrylic over perforations provides uniform, luminous effect
- Fixture attaches to wall bracket for simple installation
- Driver and wireway assembly remove for easy maintenance
- Self-aligning joining method ensures straight rows
- Maximize energy savings with efficacies up to 122 lm/W
- Made Right Here® in the USA

## SPECIFICATIONS

- HOUSING** – 20-gauge die-formed, welded C.R.S.
- REFLECTIVE SURFACES** – 92% minimum average reflective white polyester powder coat on interior steel components.
- SHIELDING** – Die-formed C.R.S. white polyester powder coated diffuser. Frosted acrylic.
- FINISH** – Textured matte white polyester TGIC powder coat bonded to phosphate-free, multi-stage pretreated metal. All parts painted after fabrication to facilitate installation, increase efficiency, and inhibit corrosion.
- ELECTRICAL** – High quality mid-power LED boards. L70 >50,000 hours.
- MOUNTING** – Fixture attaches to wall mounted, powder coated, die-formed C.R.S. bracket.
- LISTINGS** – cCSAus certified as luminaire suitable for dry or damp locations.
- WARRANTY** – 5-year limited warranty, see [hew.com/warranty](http://hew.com/warranty).

## ORDERING EXAMPLE: AIW P33 - 4 - L6/835 - OPTIONS - DIM - UNV

### ORDERING INFO

SERIES	PERFORATION OPTIONS <sup>[1]</sup>	LENGTH	LUMENS <sup>[2]</sup>	CRI	CCT
AIW	P33	33% open perforation with matte white acrylic overlay	L6 600lm L11 1,100lm	8 80 9 90 <sup>[3]</sup>	27 2700K 30 3000K 35 3500K 40 4000K 50 5000K
	SLD	Solid bottom	Stand-alone – 4' & 8' nominal lengths, fixture ships assembled. Example: 4 = 4' Row-mount – Lengths specified in 4' increments Example: 12 = 12'		

### PRODUCT BUILDER

Simplify ordering & layout design with the Williams Linear Product Builder at [hew.com/product-builder](http://hew.com/product-builder)

OPTIONS	CONTROL <sup>[4]</sup>	VOLTAGE
EM/7W 7-watt emergency battery	DRV Non-dimming driver	120 120V 277 277V
EM/10W 10-watt emergency battery	DIM Dimming driver	UNV 120-277V 347 347V <sup>[5]</sup>

## NOTES

<sup>1</sup> See page 3 for PERFORATION OPTIONS DETAILS.

<sup>2</sup> Lumens per foot output based on 3500 CCT. Actual lumens may vary +/-5%. See page 2 for FIXTURE PERFORMANCE DATA.

<sup>3</sup> Extended lead times may apply. Consult factory for availability.

<sup>4</sup> See page 2 for ADDITIONAL CONTROL OPTIONS.

<sup>5</sup> Not available with EM batteries.



## FIXTURE PERFORMANCE DATA

	LED PACKAGE	DELIVERED LUMENS	WATTAGE	EFFICACY (lm/W)
4'	L6	2,405	20.8	115.8
	L11	4,471	37.5	119.4
8'	L6	4,811	40.0	120.3
	L11	8,810	72.0	122.4

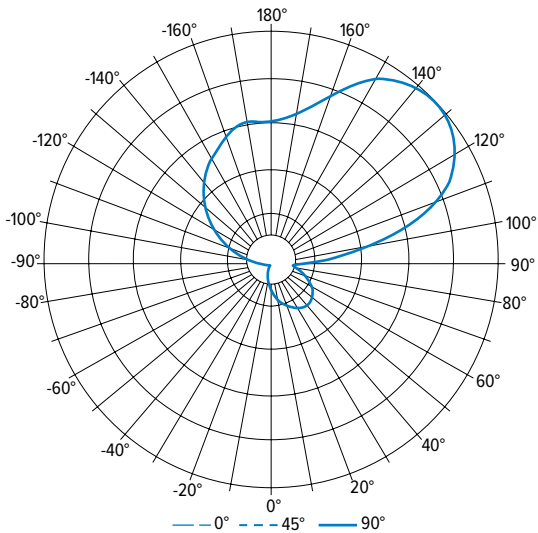
- Photometrics tested in accordance with IESNA LM-79. Results shown are based on 25°C ambient temperature.
- Wattage shown is average for 120V through 277V input.
- Results based on 3500K, 80 CRI, actual lumens may vary +/-5%
- Use multiplier table to calculate additional options.

## MULTIPLIER TABLE

		COLOR TEMPERATURE	
		CCT	CONVERSION FACTOR
80 CRI	2700K		0.97
	3000K		0.99
	3500K		1.00
	4000K		1.03
	5000K		1.06
90 CRI	2700K		0.80
	3000K		0.82
	3500K		0.83
	4000K		0.86
	5000K		0.89

## PHOTOMETRY

AIWP33-4-L6/835-DIM-UNV Total Luminaire Output: 2405 lumens; 20.8 Watts | Efficacy: 116 lm/W | 80 CRI; 3500K CCT



VERTICAL ANGLE	HORIZONTAL ANGLE					ZONAL LUMENS
	0°	45°	90°	135°	180°	
0	112	112	112	112	112	
5	121	120	114	103	99	11
15	143	132	108	83	76	31
25	160	139	97	61	52	46
35	169	138	81	40	31	56
45	170	130	61	22	15	59
55	162	116	40	11	7	56
65	144	96	22	5	3	49
75	118	71	11	3	2	38
85	87	44	4	3	2	26
90	69	31	2	3	4	
95	73	55	29	36	40	50
105	196	171	96	98	102	138
115	459	378	178	162	163	256
125	823	661	287	244	238	382
135	964	744	391	351	339	410
145	856	685	449	428	428	345
155	722	614	481	471	469	251
165	606	556	506	509	505	151
175	528	520	519	517	522	50
180	517	517	517	517	517	

	ZONE	LUMENS	% FIXTURE
LUMEN SUMMARY	0 - 30	88	4
	0 - 40	144	6
	0 - 60	259	11
	0 - 90	372	16
	90 - 120	443	18
	90 - 150	1581	66
	90 - 180	2033	85
	0 - 180	2405	100

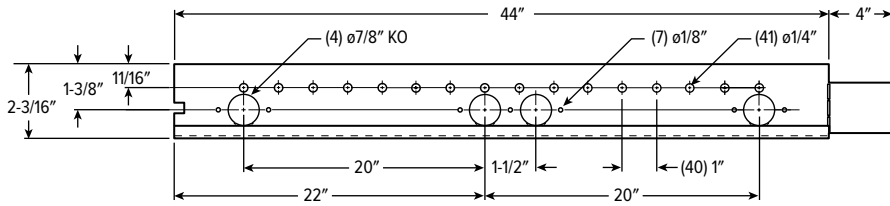
## ADDITIONAL CONTROL OPTIONS

Note: Lumen restrictions apply, consult product builder at [hew.com/product-builder](http://hew.com/product-builder).

CATALOG NUMBER	DESCRIPTION
DRV	Driver prewired for non-dimming applications
DIM	Dimming driver prewired for 0-10V low voltage applications
DIM1	1% dimming driver prewired for 0-10V low voltage applications
DIM LINE	Line voltage dimming driver (TRIAC and ELV compatible, 120V only)
DIM TRC	Line voltage dimming driver (TRIAC compatible, 120V or 277V only)
SD40	40% step-dimming driver
SD50	50% step-dimming driver
DALI	DALI dimming driver
LTE LINE	Lutron Hi-lume 1% 2-wire dimming driver forward phase line voltage controls (120V only)
LDE1	Lutron Hi-lume 1% EcoSystem dimming LED driver
LDE5	Lutron 5-Series 5% EcoSystem dimming LED driver
ELDO SOLOB	EldoLED Solodrive, 0.1% dimming driver for 0-10V controls
ELDO SOLOB DALI	EldoLED Solodrive, 0.1% dimming driver for DALI controls
ELDO ECO1	EldoLED Ecodrive, 1% dimming driver for 0-10V controls
ELDO ECO1 DALI	EldoLED Ecodrive, 1% dimming driver for DALI controls

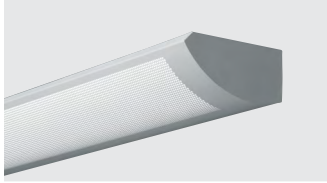


## BACKVIEW

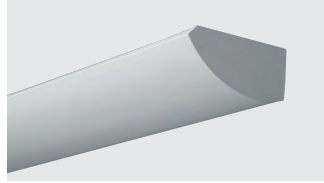


## PERFORATION OPTIONS DETAILS

P33



SLD



## MOUNTING DETAILS

