

CATALOG #: _____

Type: _____

PROJECT: _____



FEATURES

- Fixture can be surface mounted or semi-recessed for ultra-low-profile look
- Aircraft cable or pendant mount fixture for additional mounting choices
- Decorative die-cast aluminum end caps provide high-end appearance
- Optional anti-microbial white finish available for use in healthcare applications
- Maximize energy savings with efficacies as high as 144 lm/W
- Wireless in-fixture control solutions available
- Made Right Here® in the USA

SPECIFICATIONS

- HOUSING – .040" die-formed aluminum with die-cast decorative end caps.
- SHIELDING – Ribbed acrylic diffuser.
- FINISH – Textured matte white polyester TGIC powder coat bonded to phosphate-free, multi-stage pretreated metal. All parts painted after fabrication to facilitate installation, increase efficiency, and inhibit corrosion.
- ELECTRICAL – High-quality mid-power LED boards. L85 >50,000 hours. 25°C maximum ambient operating temperature.
- MOUNTING – Semi-recessed in NEMA Type "G" ceiling, surface (ceiling or wall), or suspended.
- LISTINGS –
 - cCSAus certified as luminaire suitable for dry or damp locations.
 - DesignLights Consortium qualified product. Not all versions of this product may be DLC qualified, see the DLC Qualified Products List at www.designlights.org/QPL.
 - Complies with the Buy American Act and other federal regulations. Request certification at hew.com/baa.
- WARRANTY – 5-year limited warranty, see hew.com/warranty.

ORDERING EXAMPLE: ASM - 4 - L46/835 - P - F - A - AC(Y12)/D24 - OPTIONS - CONTROL/DIM - UNV

ORDERING INFO

| SERIES | LENGTH | LUMENS ⁽¹⁾ | CRI | CCT | MOUNTING TYPE | FIXTURE TYPE | |
|--------|---------------------|-----------------------|---------|---------------------|---------------|---|-----------------------------------|
| ASM | 4 4' | 4' | 8 80 | 27 2700K | S Surface | F Electrical feeder unit ⁽⁵⁾ | |
| | 8 8' ⁽²⁾ | L25 | 2,500lm | 9 90 ⁽³⁾ | 30 3000K | P Suspended | J Joiner unit ⁽⁶⁾ |
| | | L46 | 4,600lm | 35 3500K | 40 4000K | R Semi-recessed ⁽⁴⁾ | S Stand-alone unit ⁽⁷⁾ |
| | 8' | L50 | 5,000lm | 50 5000K | | | |
| | | L92 | 9,200lm | | | | |

| SHIELDING ⁽⁸⁾ | MOUNTING (EXAMPLE: AC(Y12)/D24) ⁽⁹⁾ | OPTIONS ⁽¹⁰⁾ |
|---------------------------|--|---|
| A Ribbed acrylic diffuser | ADJUSTABLE AIRCRAFT CABLE | EM/10WLP Low-profile 10-watt emergency battery |
| | Prefix Type Length | AMW Anti-microbial white finish |
| | AC(Y12)/ D 1" grid & hardpan 24 24" | (L___) Additional lower lumen packages available. Example: 3,500 lumens = ASM-4-L46/835-A-(L35) ⁽¹¹⁾ |
| | N 9/16" grid 48 48" | QC___ Quick-connect wiring harness. ⁽¹²⁾ |
| | S Slot grid 96 96" | |
| | PENDANT MOUNT ⁽¹³⁾ | |
| | SS___ Specify length in inches ⁽¹⁴⁾ | |

| CONTROL | DRIVER | VOLTAGE |
|---|---|--------------|
| See page 4 for ADDITIONAL CONTROL/ DRIVER OPTIONS. | See page 4 for ADDITIONAL CONTROL/ DRIVER OPTIONS. | 120 120V |
| – None | DIM Driver with external dimming wires | 277 277V |
| AVI-LVFA Avi-on wireless fixture control ⁽¹⁵⁾ | DRV Driver without external dimming wires | UNV 120-277V |
| AWNRLutron Athena wireless node integral fixture control, RF only ⁽¹⁶⁾ | DA Driver with 12V auxiliary power, without external dimming wires ⁽¹⁷⁾ | |
| | DSR Sensor-ready driver without external dimming wires (D4i DALI-2) ⁽¹⁸⁾ | |

NOTES

- ¹ Lumen output based on 80 CRI/3500K CCT. Actual performance may vary +/-5%, see page 2 for FIXTURE PERFORMANCE DATA.
- ² Ships with (2) 4' lenses.
- ³ Extended lead times may apply. Consult factory for availability.
- ⁴ Available in stand-alone fixtures only.
- ⁵ Two end caps packed with fixture, quick-connect wiring harness. Suspended includes straight white cord standard. Wire gauge to be determined by row length.
- ⁶ Quick-connect wiring harness.
- ⁷ Two end caps included. Suspended includes straight white cord standard. Wire gauge to be determined by row length.
- ⁸ See page 2 for FIXTURE DETAILS.
- ⁹ See page 3 for MOUNTING DETAILS. Power cord provided with aircraft cables only. Specify with suspended mounting type only.
- ¹⁰ See page 3 for FINISH OPTIONS. Custom colors available upon request.
- ¹¹ Specify in increments of 100 nominal lumens. Option must be specified with next higher lumen package.
- ¹² See page 3 for QUICK-CONNECT OPTIONS.
- ¹³ 3/8" IPS Stem and ø5" canopy.
- ¹⁴ 4" minimum. Two stem sets required. One additional stem set required for each row mounted fixture.
- ¹⁵ DA Driver only. See page 4 for AVI-ON BLUETOOTH WIRELESS CONTROL DETAILS.
- ¹⁶ DA and DSR Drivers only.
- ¹⁷ Avi-on and Lutron Athena Controls only.
- ¹⁸ Lutron Athena Controls only.



FIXTURE PERFORMANCE DATA

| | LED PACKAGE | DELIVERED LUMENS | WATTAGE | EFFICACY (lm/W) |
|----|-------------|------------------|---------|-----------------|
| 4' | L25 | 2614 | 19.5 | 134 |
| | L46 | 4682 | 33.9 | 138 |
| 8' | L50 | 4917 | 34.0 | 145 |
| | L92 | 9212 | 64.7 | 142 |

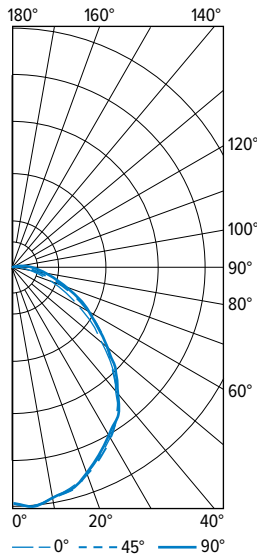
- Photometrics tested in accordance with IESNA LM-79. Results based on 80 CRI/3500K CCT, wattage for 120V through 277V input, and 25°C ambient temperature. Actual performance may vary +/-5%
- To calculate lumen output in emergency mode, multiply the battery wattage by the efficacy.
- Use multiplier table to calculate additional options.

MULTIPLIER TABLE

| | | COLOR TEMPERATURE | |
|--------|-------|-------------------|-------------------|
| | | CCT | CONVERSION FACTOR |
| 80 CRI | 2700K | | 0.97 |
| | 3000K | | 0.99 |
| | 3500K | | 1.00 |
| | 4000K | | 1.03 |
| | 5000K | | 1.06 |
| 90 CRI | 2700K | | 0.80 |
| | 3000K | | 0.82 |
| | 3500K | | 0.83 |
| | 4000K | | 0.86 |
| | 5000K | | 0.89 |

PHOTOMETRY

ASM-4-L46/835-A-S-DIM-UNV Total Luminaire Output: 4682 lumens; 33.9 Watts | Efficacy: 138.2 lm/W | 80 CRI; 3500K CCT

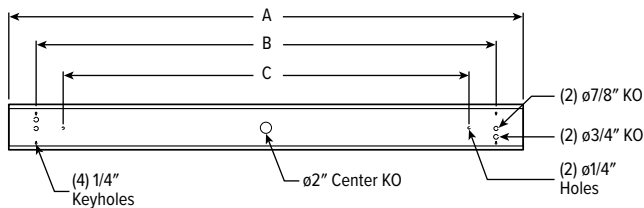


| VERTICAL ANGLE | HORIZONTAL ANGLE | | | ZONAL LUMENS |
|----------------|------------------|------|------|--------------|
| | 0° | 45° | 90° | |
| 0 | 1792 | 1792 | 1792 | |
| 5 | 1822 | 1820 | 1820 | 172 |
| 15 | 1742 | 1737 | 1731 | 487 |
| 25 | 1576 | 1565 | 1558 | 719 |
| 35 | 1370 | 1368 | 1368 | 846 |
| 45 | 1045 | 1075 | 1082 | 821 |
| 55 | 701 | 765 | 780 | 676 |
| 65 | 411 | 503 | 522 | 483 |
| 75 | 190 | 288 | 306 | 287 |
| 85 | 48 | 136 | 166 | 136 |
| 90 | 11 | 77 | 111 | |
| 95 | 0 | 41 | 72 | 45 |
| 105 | 0 | 0 | 24 | 10 |
| 115 | 0 | 0 | 0 | 1 |
| 125 | 0 | 0 | 0 | 0 |
| 135 | 0 | 0 | 0 | 0 |
| 145 | 0 | 0 | 0 | 0 |
| 155 | 0 | 0 | 0 | 0 |
| 165 | 0 | 0 | 0 | 0 |
| 175 | 0 | 0 | 0 | 0 |
| 180 | 0 | 0 | 0 | 0 |

| ZONE | LUMENS | % FIXTURE |
|----------|--------|-----------|
| 0 - 30 | 1378 | 29 |
| 0 - 40 | 2223 | 48 |
| 0 - 60 | 3720 | 79 |
| 0 - 90 | 4625 | 99 |
| 90 - 120 | 57 | 1 |
| 90 - 150 | 57 | 1 |
| 90 - 180 | 57 | 1 |
| 0 - 180 | 4682 | 100 |

FIXTURE DETAILS

BACKVIEW



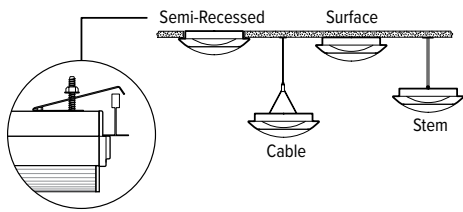
| | A | B | C |
|----|-----------|-----|-----|
| 4' | 46-13/16" | 40" | 32" |
| 8' | 93-5/8" | 87" | 80" |

Dimension A is for row-mounted units without end caps. End caps add 3/4" to dimension A.



MOUNTING DETAILS

CONTINUOUS ROW

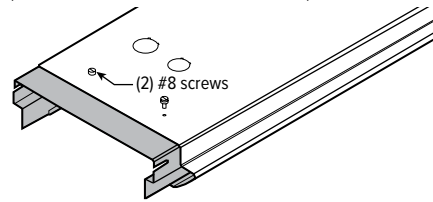


Semi-recessed model is suitable for installation in NEMA Type "G" ceiling system of 1" wide (nominal) tees mounted across ends of fixture 48" O.C., using factory furnished mounting brackets. Fixtures may be mounted in continuous row. Ceiling tiles are supported along sides by fixture housing. Fixture protrudes 2" below ceiling plane.

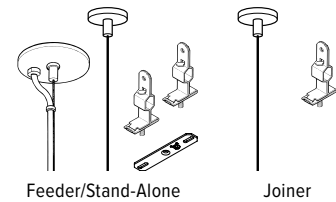
Depending on installation method, cable mounting may require additional counter-weights due to side-mounted driver.

ROW ALIGNER

(not available with semi-recessed units)



STANDARD HARDWARE FOR SUSPENDED PRODUCT (Grid and Hardpan)



Notes:

- Fixtures specified with suspended mounting type are provided with adjustable length aircraft cables with two-point "Y" connectors and mounting hardware, must specify.
- Electrical supply is brought into the feeder fixture, either as part of a row or as a stand-alone unit. Joiner fixtures complete the row.
- The feeder kits are standard with a 5" canopy to cover the junction box and a 2" canopy at the non-feed point. No J-box is required at non-feed points.

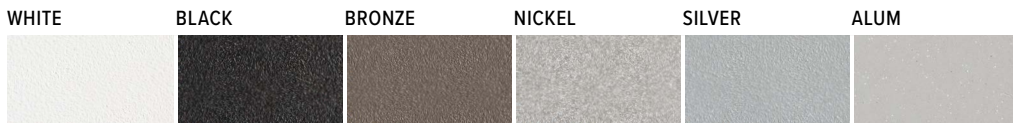
CORD FOR SUSPENDED PRODUCT

Units specified with aircraft cable require cord. Please specify cord type using ordering information below. Long fixture rows may require multiple feed points based on 18ga conductor size.

| EXAMPLE: S2438D/W | | | | |
|-------------------|--------|---------------------------|-----------|----------------------|
| CORD TYPE | LENGTH | # OF COND. ^[1] | WIRE SIZE | COLOR |
| S | 24 24" | 3 | 8D 18ga | /W White /B Black |
| | 48 48" | 4 | | |
| | 96 96" | 5 | | |
| | | 6 | | |

¹ Includes (2) 22ga purple & pink dimming conductors

FINISH OPTIONS



For custom color, please specify RAL code or a manufacturer code with description. All custom colors other than RAL require two sample swatches, minimum 1" square.

QUICK-CONNECT OPTIONS

Note: Quick-connect wiring required for row mounting. All QC harnesses contain (5) 16ga conductors plus ground.

| DESIGNATION | NUMBER OF 16GA WIRES FACTORY CONNECTED (EXCLUDING GROUND) | WIRE COLOR/POWER SUPPLY FACTORY CONNECTIONS | TYPICAL USE |
|-------------|---|---|--|
| QCBW | 2 | Black, White | On/off switching (DRV) or line voltage dimming (DIM LINE) |
| QCRW | 2 | Red, White | Alternating circuits on/off switching (DRV) or line voltage dimming (DIM LINE) |
| QCBRW | 3 | Black, Red, White | On/off switching (DRV) or line voltage dimming when equipped with EM battery packs |
| QCBW/PK | 4 | Black, White, Purple, Pink | Single circuit with 0-10V low voltage dimming (DIM) |
| QCRW/PK | 4 | Red, White, Purple, Pink | Alternating circuits on/off switching with 0-10V low voltage dimming (DIM) |
| QCBRW/PK | 5 | Black, Red, White, Purple, Pink | On/off switching when equipped with EM battery packs and 0-10V dimming (DIM) |
| QCBW/RPK | 5 | Black, White, Red, Purple, Pink | On/off switching with 0-10v dimming and 0-10v tunable using shared common |
| QCUU | N/A | N/A | QC harness passes through fixture, but is not connected to it |

SEE NEXT PAGE FOR CONTROL DETAILS.



AVI-ON BLUETOOTH WIRELESS CONTROL DETAILS

FEATURES

Simple

- Gateway-free distributed control
- Factory pre-commissioning
- Contractor friendly installation
- Occupancy/vacancy/daylight sensing

Scalable

- Virtually unlimited network size
- Spans small offices to large warehouses
- Flexible control strategies

Secure

- Optional cloud connectivity
- UL IoT platinum security rating
- DLC 5.0 compliant

COMMISSIONING & INSTALLATION TOOLS

Avi-on mobile apps provide intuitive, quick installation and commissioning. Pro tools are available to qualified installers. Live commissioning training and on-site or remote support by Avi-on must be ordered separately through Avi-on.



Commissioning Mobile App

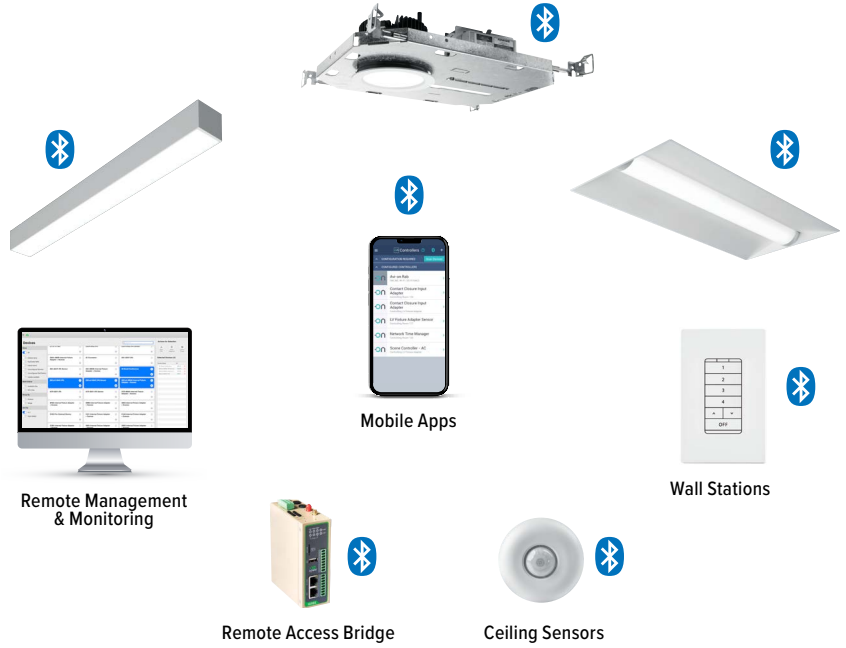


Zone Scanner Web App



Commissioning Pro App

SYSTEM COMPONENTS



The Bluetooth® word mark and logos are registered trademarks owned by Bluetooth SIG, Inc. and any use of such marks by Avi-on is under license. Other trademarks and trade names are those of their respective owners.

ACCESSORIES

| WALL STATIONS | |
|---------------|--|
| AVI-2401AC | Scene controller - numbered 1-4, 120-277VAC |
| AVI-2402BAT | Scene controller - numbered 1-4, battery powered |
| AVI-2401AC-2 | Dimmer with presets - percentages, 120-277VAC |
| AVI-2402BAT-2 | Dimmer with presets - percentages, battery powered |
| AVI-2401AC-3 | On/off/dimming, 120-277VAC |
| AVI-2402BAT-3 | On/off/dimming, battery powered |

| NETWORK | |
|-----------------------|--|
| AVI-RAB-LTE | Remote access bridge |
| AVI-KIT-NTM | Network time manager with battery backup |
| CEILING MOUNT SENSORS | |
| AVI-KIT-SEN-DUCM | PIR motion and ultrasonic sensor kit |
| AVI-KIT-SEN-ICM | PIR motion and photocell sensor kit |

For load controllers and additional accessory info, see hew.com/avi-on

ADDITIONAL CONTROL/DRIVER OPTIONS

Note: Lumen restrictions apply, consult product builder at hew.com/product-builder.

| CATALOG NUMBER | DESCRIPTION |
|----------------|--|
| AVI-LVFA/DA | Avi-on wireless fixture control for use with driver with 12V auxiliary power |
| AWNDR/DA | Lutron Athena wireless node integral fixture control, RF only, for use with driver with 12V auxiliary power |
| AWNDR/DSR | Lutron Athena wireless node integral fixture control, RF only, for use with sensor-ready driver (D4i DALI-2) |
| DRV | Driver prewired for non-dimming applications |
| DIM | Dimming driver prewired for 0-10V low voltage applications |
| DIM1 | 1% dimming driver prewired for 0-10V low voltage applications |
| DIM LINE | Line voltage dimming driver (TRIAC and ELV compatible, 120V only) |
| DIM TRC | Line voltage dimming driver (TRIAC compatible, 120V only) |
| SD40 | 40% step-dimming driver |
| SD50 | 50% step-dimming driver |
| DALI | DALI dimming driver |
| LDE1 | Lutron Hi-lume 1% EcoSystem dimming LED driver |

