

CATALOG #: \_\_\_\_\_

TYPE: \_\_\_\_\_

PROJECT: \_\_\_\_\_

### FEATURES

- Create scalable, highly functioning smart buildings with Platformatics Power over Ethernet controls
- Tunable white from 3000K to 5000K CCT, minimum 80 CRI.
- Backlit curved lens provides uniform illumination for visual comfort
- Curved floating center detail creates a highly-aesthetic presence
- Maximize energy savings with efficacies as high as 126 lm/w
- Optional gasketed acrylic lens helps protect against contaminants
- Made Right Here® in the USA

### SPECIFICATIONS

- HOUSING – 20-gauge die-formed, welded C.R.S.
- DOOR FRAME – Hinged, flat, extruded aluminum door frame with optical assembly.
- SHIELDING – Diffuse polycarbonate lens and acrylic center standard.
- FINISH – 95% reflective white polyester powder coat bonded to phosphate-free, multi-stage pretreated metal. All parts painted after fabrication to facilitate installation, increase efficiency, and inhibit corrosion.
- ELECTRICAL – High quality mid-power LED boards. L70 >50,000 hours per IES TM-21. Low-voltage DC fixture, to be fed by Class 2 power supply. Tunable White products use LEDs of multiple CCTs and may produce a perceptibly different shade of white from single-CCT products at the same CCT. All CCTs are within 3 MacAdam ellipses.
- MOUNTING – Surface or suspended
- LISTINGS –
  - cCSAus certified as luminaire suitable for dry or damp locations.
- WARRANTY – 5-year limited warranty, see [hew.com/warranty](http://hew.com/warranty).

### SYSTEM REQUIREMENTS

- PoE-ready luminaires are connected to building power systems through network integration and require other components for complete PoE lighting system
- For additional PoE info, see [hew.com/poe](http://hew.com/poe)
- Consult factory for design support



### ORDERING EXAMPLE: ATS1 - 2 4 - P58/835 - D - OPTIONS - POE PR

#### ORDERING INFO

SERIES	WIDTH	LENGTH	LUMENS <sup>[1]</sup>	CRI	CCT	SHIELDING
ATS1	1 1'	2 2' <sup>[2]</sup>	1x4	8 80	27 2700K	D Diffuse matte acrylic center
		4 4'	P16 1,600lm	9 90 <sup>[3]</sup>	30 3000K	P Perforated center <sup>[4]</sup>
	2 2'	4 4'	P26 2,600lm	2x2	35 3500K	TW Tunable white (80 CRI, 3000K-5000K)
			P52 5,200lm		40 4000K	
	2x4	4 4'	P16 1,600lm	P100 10,000lm	50 5000K	
			P25 2,500lm			
			P52 5,200lm			
			P27 2,700lm			

#### OPTIONS <sup>[5]</sup>

- SS** Sani-shield acrylic cover with double gasket. <sup>[7]</sup>
- SS/PC** Sani-shield polycarbonate cover with double gasket. <sup>[8]</sup>
- AMW** Anti-microbial white finish

#### CONTROL <sup>[6]</sup>

- POE PR** Power over Ethernet, Platformatics-ready

#### NOTES

- <sup>1</sup> Lumen output based on 80 CRI, 3000K for single CCT and 4000K for TW. Actual lumens may vary +/-5%. See page 2 for FIXTURE PERFORMANCE DATA.
- <sup>2</sup> 2' width only.
- <sup>3</sup> Extended lead times may apply. Consult factory for availability. Not available with Tunable White.
- <sup>4</sup> Decreases lumen output by 15%
- <sup>5</sup> See page 4 for FINISH OPTIONS. Suspended mounting available. See page 4 for SUSPENDED MOUNTING DETAILS.
- <sup>6</sup> See page 3 for NODE CONNECTION DETAILS. For additional PoE info, see [hew.com/poe](http://hew.com/poe).
- <sup>7</sup> Reduces lumen output by 10%.
- <sup>8</sup> Reduces lumen output by 10%.



# ATS1 PoE | tunable WHITE

## Architectural Surface – Curved Floating Center

### FIXTURE PERFORMANCE DATA

#### STANDARD

	LED PACKAGE	DELIVERED LUMENS	WATTAGE	EFFICACY (lm/W)
1x4	P16	1649	14.4	114.4
	P25	2506	23.2	108.3
	P52	5240	46.9	111.8
2x2	P16	1649	14.4	114.4
	P25	2506	23.2	108.3
	P52	5240	46.9	111.8
2x4	P27	2743	21.7	126.3
	P58	5802	47.5	122.3
	P100 <sup>1</sup>	10049	81.2	123.8

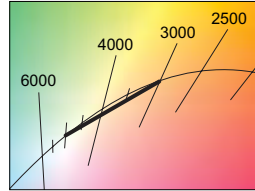
#### TUNABLE WHITE

	LED PACKAGE	DELIVERED LUMENS	WATTAGE	EFFICACY (lm/W)
1x4	P16	1605	15.4	104.0
	P25	2507	25.1	99.9
	P52	5224	50.1	104.4
2x2	P16	1605	15.4	104.0
	P26	2507	25.1	99.9
	P52	5224	50.1	104.4
2x4	P27	2717	24.2	112.1
	P58	5835	49.8	117.2
	P100 <sup>1</sup>	10070	95.2	105.7

#### MULTIPLIER TABLE

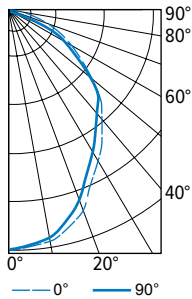
	COLOR TEMPERATURE		
	CCT	LUMENS	
		STANDARD	TUNABLE WHITE
80 CRI	2700K	0.97	-
	3000K	0.99	0.95
	3500K	1.00	0.98
	4000K	1.03	1.00
	5000K	1.06	0.96
90 CRI	2700K	0.80	-
	3000K	0.82	-
	3500K	0.83	-
	4000K	0.86	-
	5000K	0.89	-

- Photometrics tested in accordance with IESNA LM-79. Results shown are based on 25°C ambient temperature.
  - Standard results based on 3500K standard, 80 CRI, actual lumens may vary +/-5%
  - Tunable white results based on 4000K standard, 80 CRI, actual lumens may vary +/-5%
  - Use multiplier tables to calculate additional options.
- <sup>1</sup> Fixture contains two nodes, one power drop per node required.



### PHOTOMETRY

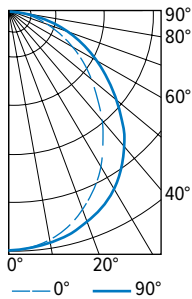
ATS1-14-P52/835-D Total Luminaire Output: 5240 lumens; 47 Watts | Efficacy: 112 lm/W | 80 CRI; 3500K CCT



VERTICAL ANGLE	HORIZONTAL ANGLE			ZONAL LUMENS
	0°	45°	90°	
0	2389	2389	2389	
5	2364	2357	2351	224
15	2238	2207	2180	622
25	1912	1855	1818	863
35	1593	1532	1508	964
45	1293	1248	1237	954
55	892	871	837	777
65	584	566	418	519
75	284	203	186	251
85	79	54	40	67
90	0	0	0	

LUMEN SUMMARY	ZONE	LUMENS	% FIXTURE
	0 - 30	1709	33
	0 - 40	2673	51
	0 - 60	4403	84
	0 - 90	5240	100
	0 - 180	5240	100

ATS1-22-P52/835-D Total Luminaire Output: 5240 lumens; 47 Watts | Efficacy: 112 lm/W | 80 CRI; 3500K CCT



VERTICAL ANGLE	HORIZONTAL ANGLE			ZONAL LUMENS
	0°	45°	90°	
0	2062	2062	2062	
5	2058	2050	2047	195
15	1943	1948	1984	552
25	1711	1777	1859	820
35	1435	1531	1636	957
45	1106	1204	1300	931
55	789	891	958	791
65	514	601	660	588
75	261	331	383	336
85	47	42	40	71
90	0	0	0	

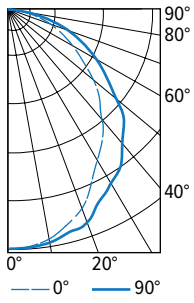
LUMEN SUMMARY	ZONE	LUMENS	% FIXTURE
	0 - 30	1567	30
	0 - 40	2523	48
	0 - 60	4245	81
	0 - 90	5240	100
	0 - 180	5240	100



# ATS1 PoE | tunable WHITE

## Architectural Surface – Curved Floating Center

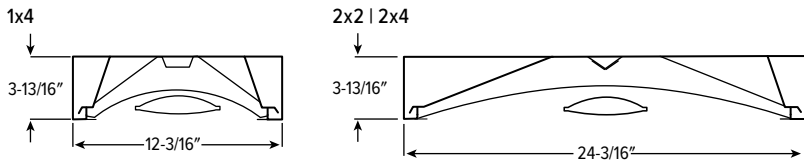
ATS1-24-P58/835-D Total Luminaire Output: 5802 lumens; 47.5 Watts | Efficacy: 122.3 lm/W | 80 CRI; 3500K CCT



CANDLEPOWER DISTRIBUTION	VERTICAL ANGLE	HORIZONTAL ANGLE			ZONAL LUMENS
		0°	45°	90°	
	0	2312	2312	2312	
	5	2299	2300	2302	218
	15	2170	2189	2217	617
	25	1877	1938	2012	896
	35	1521	1628	1735	1020
	45	1225	1369	1461	1029
	55	847	981	1044	866
	65	567	692	743	663
	75	295	403	403	395
	85	88	63	59	97
	90	0	0	0	

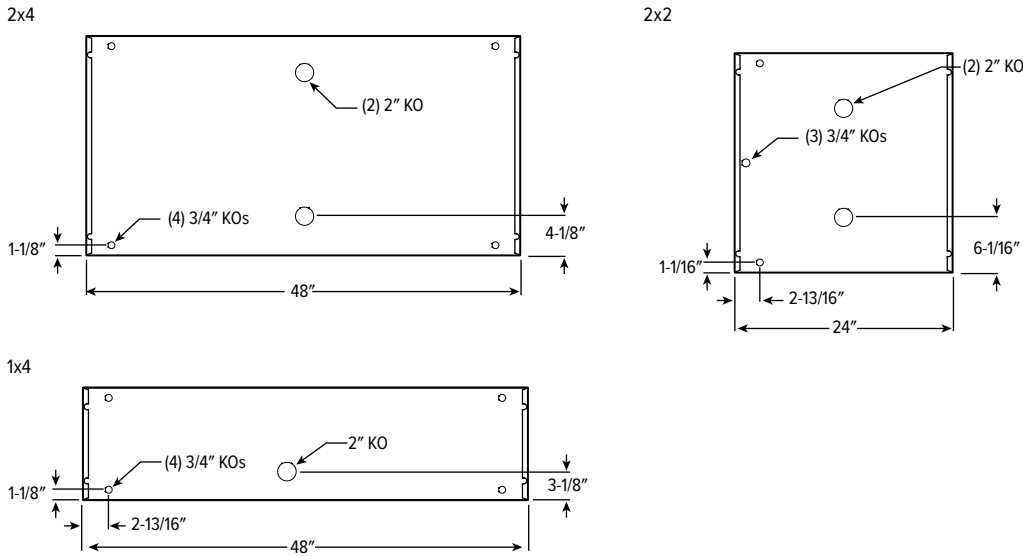
LUMEN SUMMARY	ZONE	LUMENS	% FIXTURE
	0 - 30	1731	30
	0 - 40	2752	47
	0 - 60	4647	80
	0 - 90	5802	100
	0 - 180	5802	100

### CROSS SECTIONS



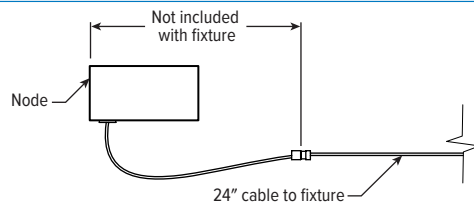
### FIXTURE DETAILS

#### BACKVIEW



### NODE CONNECTION DETAILS

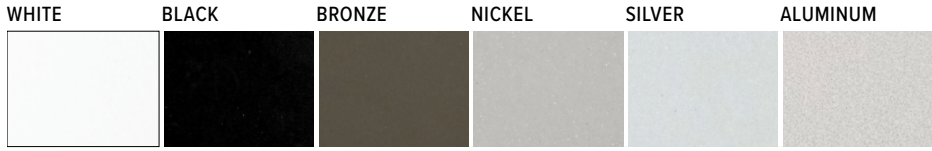
Includes 24" cable with 4-position mating connector for Platformatics POE-LN2 node. See node spec sheet for details: [platformatics.com/product/poe-ln2](http://platformatics.com/product/poe-ln2)



# ATS1 PoE | tunable WHITE

## Architectural Surface – Curved Floating Center

### FINISH OPTIONS



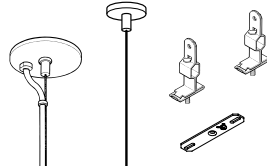
For custom color, please specify RAL code or a manufacturer code with description. All custom colors other than RAL require two sample swatches, minimum 1" square.

### SUSPENDED MOUNTING DETAILS

#### ORDERING INFO (EXAMPLE: ACF\*4P/D48)

Prefix	Type	Length
ACF*4P	Adjustable Aircraft Cable	D 1" grid & hardpan 24 24"
		N 9/16" grid 48 48"
	S Slot grid 96 96"	
	144 144"	
	192 192"	
		240 240"
		300 300"

#### STANDARD HARDWARE (Grid & Hardpan)



- Fixtures are provided with adjustable length aircraft cables and mounting hardware, must specify.
- One 5" canopy used at power feed location to cover the junction box. Three other suspension points use 2" canopy at the non-feed point. One power drop per node required.

