

CATALOG #: _____

TYPE: _____

PROJECT: _____



FEATURES

- Support human-centric design with adaptive, individualized lighting using tunable white light
- IK10 rated for demanding environments
- Ideal for schools, hallways, stairwells, dormitories, locker rooms, or vandal prone areas
- Heavy-duty marine grade aluminum housing, die-cast end caps, and extremely durable impact-resistant polycarbonate lens add strength and durability
- Tamper-resistant #8 snake eye screws provided to protect against vandals
- Optional occupancy sensor available for use in stairwells and low traffic areas
- Designed for surface, wall, pendant, or vandal-resistant corner mount
- ADA compliant in wall mount applications
- Features easy row mount capability with integral alignment pieces
- Wireless in-fixture control solutions available
- Made Right Here® in the USA

SPECIFICATIONS

- HOUSING** – Marine grade aluminum. Extruded housing with die-cast end caps.
- SHIELDING** – UV stabilized polycarbonate lens, .150" thick with .040" matte white acrylic underlay to minimize pixelation.
- REFLECTIVE SURFACES** – 92% minimum average reflective white powder coat on interior components.
- FINISH** – Textured matte white polyester TGIC powder coat bonded to phosphate-free, multi-stage pretreated metal. All parts painted after fabrication to facilitate installation, increase efficiency, and inhibit corrosion.
- ELECTRICAL** – High-quality mid-power LED board. L70 > 50,000 hours per IES TM-21. Tunable White products use LEDs of multiple CCTs and may produce a perceptibly different shade of white from single-CCT products at the same CCT. All CCTs are within 3 MacAdam ellipses. 50/60 Hz constant current driver.
- MOUNTING** – Surface (ceiling or wall) or suspended (hanging hardware required).
- LISTINGS** –
 - cCSAus certified as luminaire suitable for dry or damp locations.
 - Suitable for wet location under covered ceiling with WET/CC option.
 - ADA compliant in wall mount applications.
 - IK10 rated
 - Build America, Buy America (BABA) and Buy American Act (BAA) compliant. Request certification at hew.com/buy-american
- WARRANTY** – 5-year limited warranty, see hew.com/warranty

ORDERING EXAMPLE: AVX - 4 - L62/8TW - CPC - OPTIONS - CONTROL/DALI - UNV

| SERIES | LENGTH | LUMENS ^[1] | CRI | CCT | SHIELDING ^[2] |
|--------|---------------------|-----------------------|------|---------------------------------|---|
| AVX | 2 2' | 2' | 8 80 | TW Tunable white (3000K-5000K) | CPC Clear, UV stabilized polycarbonate, .150" thick |
| | 4 4' | L31 3,100lm | 9 90 | TW2 Tunable white (2700K-6500K) | WPC White, UV stabilized polycarbonate, .150" thick |
| | 8 8' ^[3] | 4' L30 3,000lm | | | |
| | | L62 6,200lm | | | |
| | | 8' L60 6,000lm | | | |
| | | L125 12,500lm | | | |

OPTIONS ^[4]

See page 3 for FINISH OPTIONS.

| | |
|--------------|---|
| EM/10WLP | Low profile 10-watt emergency battery ^[5] |
| EM/10WRM | Remote mount 10-watt emergency battery |
| EM/10WRM/RTS | Remote mount 10-watt emergency battery with regressed test switch |
| (L___) | Additional lower lumen packages available. ^[6] Example: 5,500 nominal lumens = AVX-4-L62/8TW-(L55). |
| WET/CC | Wet location under covered ceiling ^[7] |

AVX-4 CMB 4', vandal-resistant corner mount

MOUNTING (EXAMPLE: AC(Y12)/D48) ^[8]

| Prefix | Type | Length |
|----------|---------------------|--------|
| AC(Y12)/ | D 1" grid & hardpan | 24 24" |
| | N 9/16" grid | 48 48" |
| | S Slot grid | 96 96" |

PENDANT MOUNT ^[10]

| | |
|------------|---|
| SWS(AVX)12 | Pendant swivel stem mount with 12" stem |
| SS(AVX)12 | Pendant stem mount with 12" stem |

CONTROL ^[11]

See page 4 for ADDITIONAL CONTROL OPTIONS.

| | |
|-----|---|
| – | None |
| AWN | Lutron Athena wireless node integral fixture control, RF only ^[12] |

DRIVER

See page 4 for DRIVER DETAILS.

| | |
|------|--|
| DALI | Driver prewired for DALI applications |
| DIM | (1) 0-10V signal to control dimming (1) 0-10V signal to control CCT |
| DMX | Driver prewired for DMX applications |
| DSR | Sensor-ready driver without external dimming wires (D4i DALI-2). ^[13] |
| LD2 | Lutron DALI-2 digital driver, 1% |

VOLTAGE

| | |
|-----|----------|
| 120 | 120V |
| 277 | 277V |
| UNV | 120-277V |

ACCESSORIES

TPSN-8 TOOL #8, tamper-resistant snake eyes tool. ^[14]

NOTES

- Lumens based on CPC shielding, 80 CRI/4000K CCT. Actual performance may vary +/-5%. See page 2 for FIXTURE PERFORMANCE DATA. Additional lumen packages available, see options.
- See page 3 for SHIELDING DETAILS.
- Two 4' units end-to-end.
- Remote EM batteries: max remote distance 50', including suspension length. Large remote box provided. Specify CEC in the option code when California Energy Commission regulations are required. See page 3 for REMOTE MOUNT BATTERY DETAILS.
- 4' and 8' only.
- Specify in increments of 100 nominal lumens. Option must be specified with next higher lumen package.

- Not available with AVX-4 CMB corner mount, occupancy sensors, or suspended mounting hardware.
- Required with suspended mount fixtures.
- Units specified with ACF(Y12)___ require cord. See page 3 for MOUNTING DETAILS.
- Two stem sets required for 2' and 4' fixtures; three stem sets required for 8'. One additional stem set required for each 4' length when row mounted.
- See page 4 for SENSOR PLACEMENT DETAILS.
- DSR and LD2 Drivers only.
- Lutron Athena Controls only.
- Tamper-resistant tool must be ordered separately. Please specify quantity required per project.



FIXTURE PERFORMANCE DATA

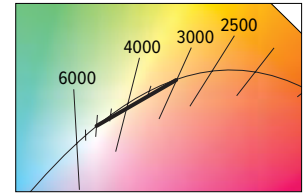
| | LED PACKAGE | DELIVERED LUMENS | | WATTAGE | EFFICACY (lm/W) | |
|----|-------------|------------------|-------------|---------|-----------------|-------------|
| | | CLEAR (CPC) | WHITE (WPC) | | CLEAR (CPC) | WHITE (WPC) |
| 2' | L31 | 3190 | 2201 | 30 | 106 | 73 |
| 4' | L30 | 3043 | 2100 | 29 | 107 | 74 |
| | L62 | 6261 | 4320 | 59 | 107 | 74 |
| 8' | L60 | 6085 | 4199 | 57 | 107 | 74 |
| | L125 | 12522 | 8640 | 118 | 107 | 74 |

- Photometrics tested in accordance with IESNA LM-79. Results based on CPC shielding, 80 CRI/4000K CCT, average wattage for 120V through 277V input, and 25°C ambient temperature. Actual performance may vary +/-5%.
- To calculate lumen output in emergency mode, multiply the battery wattage by the efficacy.
- Use multiplier table to calculate additional options.

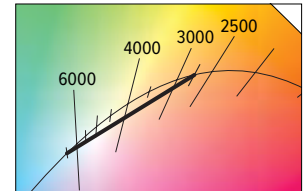
MULTIPLIER TABLE

| | CCT | COLOR TEMPERATURE | | | |
|--------|-------|-------------------|---------|--------|---------|
| | | TW | | TW2 | |
| | | LUMENS | WATTAGE | LUMENS | WATTAGE |
| 80 CRI | 2700K | — | — | 0.93 | 1.02 |
| | 3000K | 0.95 | 1.04 | 0.95 | 1.01 |
| | 3500K | 0.98 | 1.02 | 0.98 | 1.00 |
| | 4000K | 1.00 | 1.00 | 1.00 | 1.00 |
| | 5000K | 0.96 | 1.04 | 1.02 | 1.00 |
| | 6500K | — | — | 1.01 | 1.04 |
| 90 CRI | 2700K | — | — | 0.81 | 1.02 |
| | 3000K | 0.83 | 1.04 | 0.83 | 1.01 |
| | 3500K | 0.86 | 1.02 | 0.86 | 1.00 |
| | 4000K | 0.88 | 1.00 | 0.88 | 1.00 |
| | 5000K | 0.84 | 1.04 | 0.89 | 1.00 |
| | 6500K | — | — | 0.88 | 1.04 |

TW

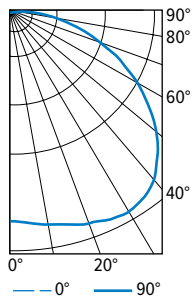


TW2



PHOTOMETRY

AVX-4-L62/8TW-CPC-DALI Total Luminaire Output: 6261 lumens; 59 Watts | Efficacy: 106 lm/W | 82.8 CRI; 4060K CCT



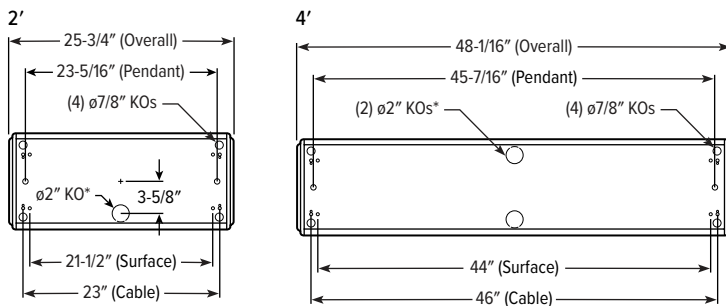
| VERTICAL ANGLE | HORIZONTAL ANGLE | | | ZONAL LUMENS |
|----------------|------------------|------|------|--------------|
| | 0° | 45° | 90° | |
| 0 | 1897 | 1897 | 1897 | |
| 5 | 1902 | 1898 | 1915 | 182 |
| 15 | 1772 | 1906 | 2005 | 536 |
| 25 | 1547 | 1857 | 2083 | 845 |
| 35 | 1267 | 1726 | 2081 | 1062 |
| 45 | 978 | 1502 | 1888 | 1125 |
| 55 | 704 | 1202 | 1541 | 1026 |
| 65 | 430 | 861 | 1100 | 788 |
| 75 | 145 | 488 | 656 | 466 |
| 85 | 13 | 187 | 294 | 187 |
| 90 | 0 | 86 | 162 | |

| LUMEN SUMMARY | ZONE | LUMENS | % FIXTURE |
|---------------|---------|--------|-----------|
| | 0 - 30 | 1562 | 25 |
| | 0 - 40 | 2624 | 42 |
| | 0 - 60 | 4775 | 76 |
| | 0 - 90 | 6217 | 99 |
| | 0 - 180 | 6261 | 100 |

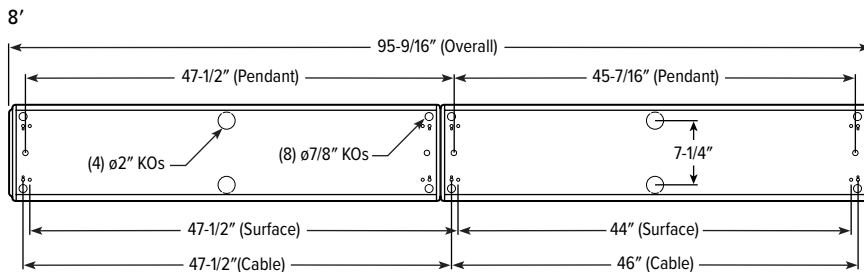
FIXTURE DETAILS

See hew.com/power-entry for power entry details.

BACKVIEW

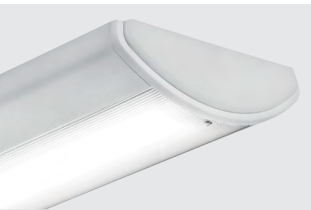


- For continuous row applications, subtract 7/8" from overall dimension for every additional fixture per row.
- 2" KOs not available with 2' fixture when specified with EM battery.
- 4' fixture may only have (1) 2" KO when specified with occupancy sensor.



SHIELDING DETAILS

CPC

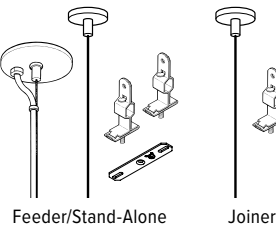


WPC



MOUNTING DETAILS

STANDARD HARDWARE FOR SUSPENDED PRODUCT (Grid and Hardpan)



- Notes:
- Fixtures specified with suspended mounting type are provided with adjustable length aircraft cables with two-point "Y" connectors and mounting hardware, must specify.
 - Electrical supply is brought into the feeder fixture, either as part of a row or as a stand-alone unit. Joiner fixtures complete the row.
 - The feeder kits are standard with a 5" canopy to cover the junction box and a 2" canopy at the non-feed point. No J-box is required at non-feed points.

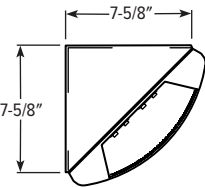
CORD FOR SUSPENDED PRODUCT

Units specified with aircraft cable require cord. Please specify cord type using ordering information below. Long fixture rows may require multiple feed points based on 18ga conductor size.

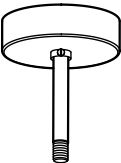
| EXAMPLE: S2438D/W | | | | |
|-------------------|--------|---------------------------|-----------|----------------------|
| CORD TYPE | LENGTH | # OF COND. ^[1] | WIRE SIZE | COLOR |
| S | 24 24" | 3 | 8D 18ga | /W White /B Black |
| | 48 48" | 4 | | |
| | 96 96" | 5 | | |

¹ Includes (2) 22ga purple & pink dimming conductors

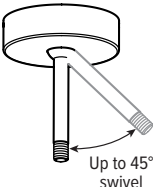
CORNER MOUNT



SS(AVX)12

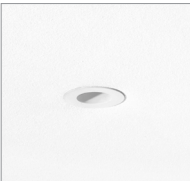


SWS(AVX)12



REMOTE MOUNT BATTERY DETAILS

EM/10WRM/RTS



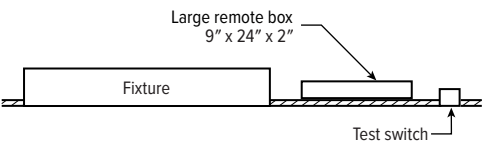
Regressed test switch
ø1-3/4"

EM/10WRM



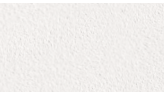
Standard test switch
2-3/4" x 4-1/2"

Max remote distance is 50', connection by others.



FINISH OPTIONS

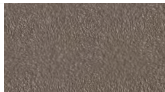
WHITE



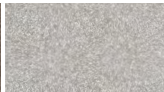
BLACK



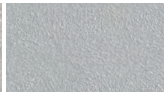
BRONZE



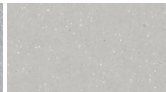
NICKEL



SILVER



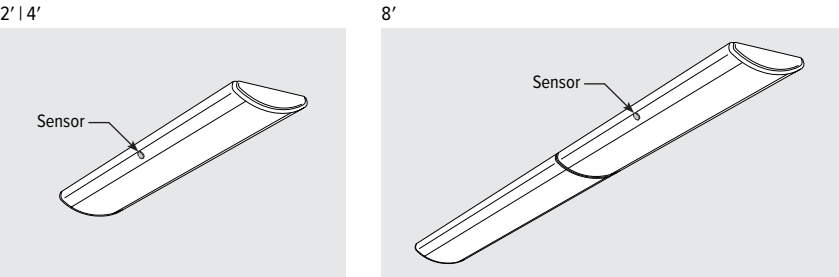
ALUM



For custom color, please specify RAL code or a manufacturer code with description. All custom colors other than RAL require four sample swatches, minimum 1" square.



SENSOR PLACEMENT DETAILS



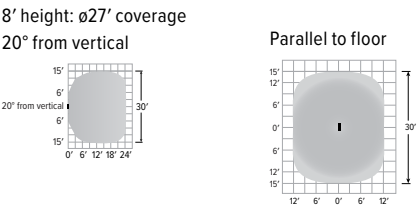
ADDITIONAL CONTROL OPTIONS

Not available with EM battery in 2' units.

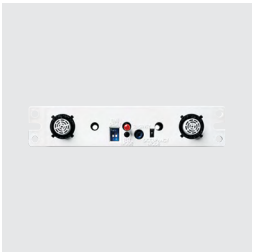
OCCWS-FS-505-PP-___ Wattstopper low voltage ultrasonic motion sensor with power pack. Must specify voltage: 120, 277, or 347V.

| SPECIFICATIONS | |
|-------------------|--------------------------|
| TYPE | Ultrasonic Motion |
| MOUNTING HEIGHT | 8' – 10' |
| DETECTION ANGLE | 360° |
| TEMPERATURE RANGE | 0° to 55°C |
| RELATIVE HUMIDITY | 5 to 95%, non-condensing |

SENSOR COVERAGE PATTERNS



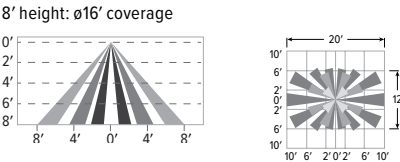
SENSOR DETAIL



OCCLV-OSF10-IOW-___ Leviton PIR motion sensor. Must specify voltage: 120 or 277. Factory-installed.

| SPECIFICATIONS | |
|-------------------|---------------------------|
| TYPE | PIR Motion |
| MOUNTING HEIGHT | 8' |
| DETECTION ANGLE | 360° |
| TEMPERATURE RANGE | 0° to 55°C |
| RELATIVE HUMIDITY | 20% to 90% non-condensing |

SENSOR COVERAGE PATTERNS



SENSOR DETAIL



DRIVER DETAILS

