

CATALOG #: _____

TYPE: _____

PROJECT: _____



FEATURES

- Provides uniform downward light distribution and subtle side illumination
- Diffuse acrylic lens enhances uniformity and minimizes glare
- Wireway is accessible without the use of tools
- High-performance up to 143 lm/W
- Wireless in-fixture control solutions available
- Made Right Here® in the USA

SPECIFICATIONS

- HOUSING** – 22-gauge die-formed C.R.S.
- SHIELDING** – Linear ribbed diffuse acrylic.
- FINISH** – 92% minimum average reflective white polyester powder coat bonded to phosphate-free, multi-stage pretreated metal. All parts painted after fabrication to facilitate installation, increase efficiency, and inhibit corrosion.
- ELECTRICAL** – High-quality mid-power LED boards. See fixture performance data for lumen maintenance. 50/60 Hz constant current driver.
- MOUNTING** – Surface or suspended.
- LISTINGS** –
 - cCSAus certified as luminaire suitable for dry or damp locations.
 - DesignLights Consortium qualified product. Not all versions of this product may be DLC qualified, see the DLC Qualified Products List at www.designlights.org/QPL.
 - Complies with the Buy American Act and other federal regulations. Request certification at hew.com/baa.
- WARRANTY** – 5-year limited warranty, see hew.com/warranty.

ORDERING EXAMPLE: AW - 4 - L54/835 - RA - OPTIONS - CONTROL/DIM - UNV

ORDERING INFO

SERIES	LENGTH	LUMENS ^[1]	CRI	CCT	SHIELDING	OPTIONS ^[2]
AW	4 4'	L34 3,400lm	8 80	27 2700K	RA Ribbed diffuse acrylic	See page 3 for FINISH OPTIONS.
		L54 5,400lm	9 90	30 3000K		EM/10WLP Low-profile 10-watt emergency battery
		L74 7,400lm		35 3500K		SS-12 Single stem & canopy, 12" ^[3]
		L93 9,300lm		40 4000K		SWS-12 Stem & swivel canopy, 12" ^[4]
				50 5000K		VBV (2) Y-hangers
						VBV-2 (2) Y-hangers and (2) 2' chains
						(L_) Additional lower lumen packages available.
						Example: 4,000 lumens = AW-4-L54/835-(L40) ^[5]

AIRCRAFT CABLES (EXAMPLE: ACFL/D48) ^[6]

Prefix	Type	Length
ACFL/	D 1" grid & hardpan	24 24"
	N 9/16" grid	48 48"
	S Slot grid	96 96"

CONTROL ^[7]

See page 5 for ADDITIONAL CONTROL OPTIONS.

–	None
AVI-LVFA	Avi-on wireless fixture control ^[8]
AVI-LVFA-CS2-PIR	Avi-on wireless fixture control with PIR motion and daylight sensor ^[9]
AWNRR	Lutron Athena wireless node integral fixture control, RF only ^[10]
AWNS	Lutron Athena wireless node integral fixture control, RF with daylight and occupancy sensing ^[11]

DRIVER

See page 5 for ADDITIONAL DRIVER OPTIONS.

DIM	Driver with external 0-10V dimming wires
DRV	Driver without external dimming wires
DA	Driver with 12V auxiliary power, without external dimming wires ^[12]
DSR	Sensor-ready driver without external dimming wires (D4i DALI-2). ^[13]

VOLTAGE

120	120V
277	277V
UNV	120-277V
347	347V ^[14]

NOTES

- Lumen output based on 80 CRI/3500K CCT. Actual lumens may vary +/-5%, see page 2 for FIXTURE PERFORMANCE DATA.
- See page 3 for MOUNTING DETAILS.
- Two stem sets required. One additional stem set required for each row mounted fixture.
- Two stem sets required. One additional stem set required for each row mounted fixture.
- Specify in increments of 100 nominal lumens. Option must be specified with next higher lumen package.

- VBV hanger(s) included. Units specified with aircraft cable require cord. See page 3 for MOUNTING DETAILS.
- See page 4 for AVI-ON BLUETOOTH WIRELESS CONTROL DETAILS. See page 3 for SENSOR & NODE PLACEMENT DETAILS.
- DA Driver only.
- DA Driver only.
- DA and DSR Drivers only.
- DA and DSR Drivers only.
- Avi-on and Lutron Athena Controls only.
- Lutron Athena Controls only.
- Not available with EM batteries, DA, or DSR drivers.



FIXTURE PERFORMANCE DATA

	LED PACKAGE	DELIVERED LUMENS	WATTAGE	EFFICACY (lm/W)
4'	L34	3425	24.0	143
	L54	5525	40.2	137
	L74	7407	55.6	133
	L93	9241	70.2	132

- Photometrics tested in accordance with IESNA LM-79. Results based on 80 CRI/3500K CCT, average wattage for 120V through 277V input, and 25°C ambient temperature. Actual performance may vary +/-5%.
- To calculate lumen output in emergency mode, multiply the battery wattage by the efficacy.
- Use multiplier table to calculate additional options.

LUMEN MAINTENANCE ⁽¹⁾			
L70	L80	L85	L90
>102,000	>102,000	>102,000	82,000
>72,000	>72,000	63,000	42,000
>72,000	>72,000	63,000	42,000
>72,000	>72,000	63,000	42,000

¹ Predicted lumen maintenance calculated in accordance with IES TM-21 per Energy Star (R) TM-21 Calculator rev. 02.08.16.

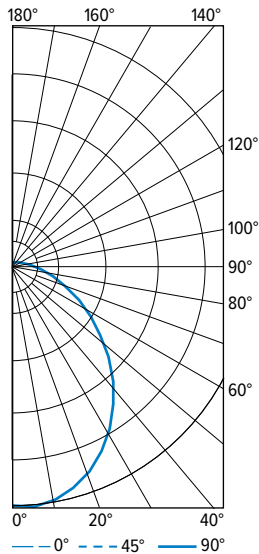
MULTIPLIER TABLE

COLOR TEMPERATURE	
CCT	CONVERSION FACTOR
2700K	0.97
3000K	0.99
3500K	1.00
4000K	1.03
5000K	1.06

2700K	0.80
3000K	0.82
3500K	0.83
4000K	0.86
5000K	0.89

PHOTOMETRY

AW-4-L34/835-RA-DIM-UNV Total Luminaire Output: 3425 lumens; 24 Watts | Efficacy: 143 lm/W | 80 CRI; 3500K CCT

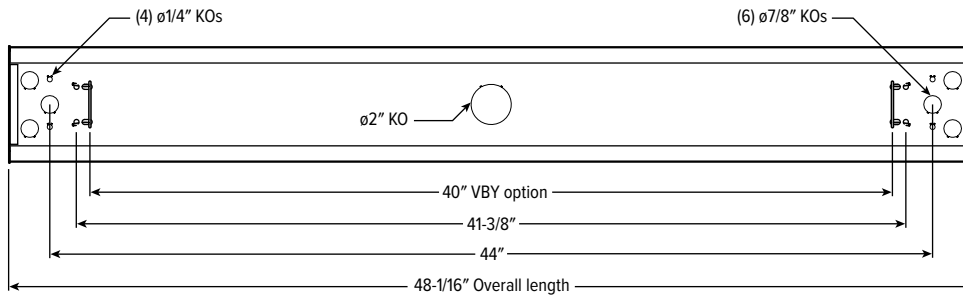


VERTICAL ANGLE	HORIZONTAL ANGLE			ZONAL LUMENS
	0°	45°	90°	
0	1106	1106	1106	
5	1115	1098	1095	105
15	1058	1057	1064	298
25	945	973	999	448
35	790	851	898	530
45	610	701	768	537
55	428	542	621	477
65	260	381	467	372
75	130	255	330	259
85	26	162	230	162
90	0	126	188	
95	0	100	161	99
105	0	60	111	61
115	0	38	76	37
125	0	24	51	21
135	0	15	33	11
145	0	3	18	5
155	0	0	14	2
165	0	0	4	0
175	0	0	0	0
180	0	0	0	

ZONE	LUMENS	% FIXTURE
0 - 30	851	25
0 - 40	1381	40
0 - 60	2395	70
0 - 90	3188	93
90 - 120	197	6
90 - 150	234	7
90 - 180	237	7
0 - 180	3425	100

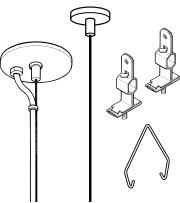
FIXTURE DETAILS

BACKVIEW



MOUNTING DETAILS

STANDARD HARDWARE FOR SUSPENDED PRODUCT (Grid and Hardpan)



- Notes:
- Fixtures are provided with adjustable length aircraft cables, (2) VBY hangers and mounting hardware, must specify.
 - The feeder kits are standard with a 5" canopy to cover the junction box and a 2" canopy at the non-feed point. No J-box is required at non-feed points.

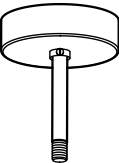
CORD FOR SUSPENDED PRODUCT

Units specified with aircraft cable require cord. Please specify cord type using ordering information below. Long fixture rows may require multiple feed points based on 18ga conductor size.

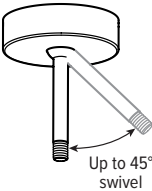
EXAMPLE: S2438D/W				
CORD TYPE	LENGTH	# OF COND. ^[1]	WIRE SIZE	COLOR
S	24 24"	3	8D 18ga	/W White /B Black
	48 48"	4		
	96 96"	5 6		

¹ Includes (2) 22ga purple & pink dimming conductors

SS-12

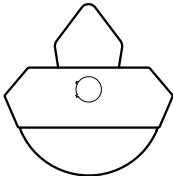


SWS-12



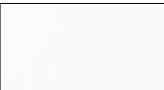
Up to 45°
swivel

VBY | VBY-2



FINISH OPTIONS

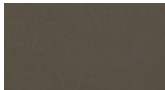
WHITE



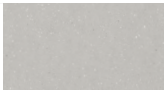
BLACK



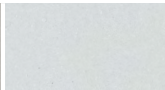
BRONZE



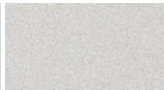
NICKEL



SILVER

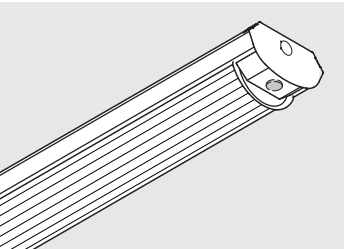


ALUM



For custom color, please specify RAL code or a manufacturer code with description. All custom colors other than RAL require two sample swatches, minimum 1" square.

SENSOR & NODE PLACEMENT DETAILS



Overall fixture length: 49-7/8"

SEE NEXT PAGE FOR CONTROL DETAILS



AVI-ON BLUETOOTH WIRELESS CONTROL DETAILS

FEATURES

Simple

- Gateway-free distributed control
- Factory pre-commissioning
- Contractor friendly installation
- Occupancy/vacancy/daylight sensing

Scalable

- Virtually unlimited network size
- Spans small offices to large warehouses
- Flexible control strategies

Secure

- Optional cloud connectivity
- UL IoT platinum security rating
- DLC 5.0 compliant

COMMISSIONING & INSTALLATION TOOLS

Avi-on mobile apps provide intuitive, quick installation and commissioning. Pro tools are available to qualified installers. Live commissioning training and on-site or remote support by Avi-on must be ordered separately through Avi-on.



Commissioning
Mobile App

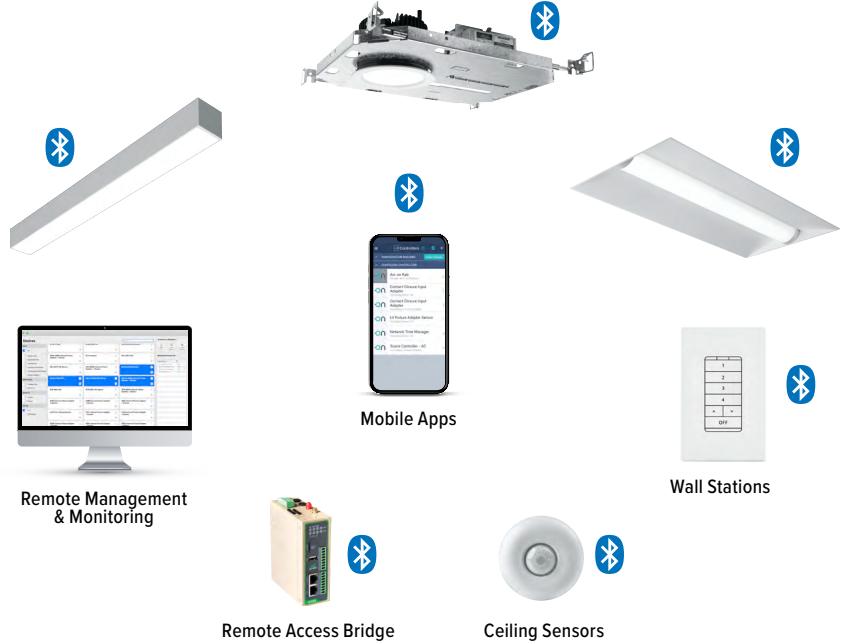


Zone Scanner
Web App



Commissioning
Pro App

SYSTEM COMPONENTS



The Bluetooth® word mark and logos are registered trademarks owned by Bluetooth SIG, Inc. and any use of such marks by Avi-on is under license. Other trademarks and trade names are those of their respective owners.

ACCESSORIES

WALL STATIONS	
AVI-2401AC	Scene controller - numbered 1-4, 120-277VAC
AVI-2402BAT	Scene controller - numbered 1-4, battery powered
AVI-2401AC-2	Dimmer with presets - percentages, 120-277VAC
AVI-2402BAT-2	Dimmer with presets - percentages, battery powered
AVI-2401AC-3	On/off/dimming, 120-277VAC
AVI-2402BAT-3	On/off/dimming, battery powered

NETWORK	
AVI-RAB-LTE	Remote access bridge
AVI-KIT-NTM	Network time manager with battery backup
CEILING MOUNT SENSORS	
AVI-KIT-SEN-DUCM	PIR motion and ultrasonic sensor kit
AVI-KIT-SEN-ICM	PIR motion and photocell sensor kit

For load controllers and additional accessory info, see hew.com/avi-on

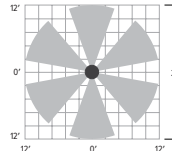
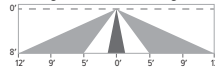
AVI-LVFA-CS2-PIR Avi-on wireless fixture control with PIR motion and daylight sensor. DA Driver only.

SPECIFICATIONS	
TYPE	PIR Motion + Daylight
MOUNTING HEIGHT	8' - 10'
DETECTION ANGLE	360°
TEMPERATURE RANGE	-30° to 50°C
RELATIVE HUMIDITY	10 to 80% non-condensing
IP RATING	IP20
MANUFACTURER	Avi-On

SENSOR COVERAGE PATTERNS

Side View

8' height: Ø24' coverage



SENSOR DETAIL



Dimensions: 13/16" x 2-1/4"



ADDITIONAL CONTROL OPTIONS

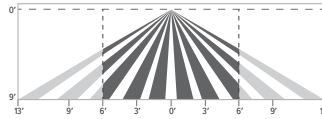
AWNS Lutron Athena wireless node integral fixture control, RF with daylight and occupancy sensing. DA and DSR Drivers only.

SPECIFICATIONS	
TYPE	Radio Frequency
MOUNTING HEIGHT	8' – 12'
DETECTION ANGLE	360°
TEMPERATURE RANGE	0° to 55°C
RELATIVE HUMIDITY	0 to 90%, non-condensing
COMMISSIONING	Clear Connect gateway – Type X with app (iOS or Android)
MANUFACTURER	Lutron



SENSOR COVERAGE PATTERNS

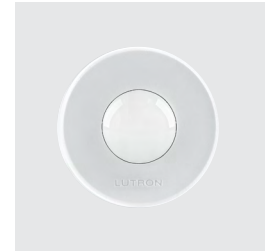
9' height: ø12' coverage



Motion Sensor Coverage

CEILING HEIGHT	COVERAGE AREA (SQ FT)
8'	114
9'	144
10'	178
12'	256

SENSOR DETAIL



Dimensions: ø1-1/8"

ATHENA CONTROL OPTIONS

CATALOG NUMBER	DESCRIPTION
AWNDR	Lutron Athena wireless node integral fixture control, RF only, for use with D4i DALI-2 or driver with 12V auxiliary power.
AWNS	Lutron Athena wireless node integral fixture control, RF with daylight and occupancy sensing, for use with D4i DALI-2 or driver with 12V auxiliary power.
AWNDR-BL	Lutron Athena wireless node integral fixture control, RF only, for use with D4i DALI-2 or driver with 12V auxiliary power, black finish.
AWNS-BL	Lutron Athena wireless node integral fixture control, RF with daylight and occupancy sensing, for use with D4i DALI-2 or driver with 12V auxiliary power, black finish.

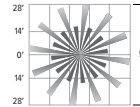
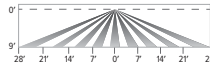
OCCSS LSXR-10-120-277 Sensor Switch PIR motion sensor, 120-277V

OCCSS LSXR-10-347/480 Sensor Switch PIR motion sensor, 347/480V

SPECIFICATIONS	
TYPE	PIR Motion
MOUNTING HEIGHT	7' – 15'
DETECTION ANGLE	360°
TEMPERATURE RANGE	-10° to 60°C
RELATIVE HUMIDITY	Up to 90% non-condensing

SENSOR COVERAGE PATTERNS

9' height: ø56' coverage



SENSOR DETAIL



ADDITIONAL DRIVER OPTIONS

Note: Lumen restrictions apply, consult product builder at hew.com/product-builder.

CATALOG NUMBER	DESCRIPTION
DRV	Driver prewired for non-dimming applications
DIM	Dimming driver prewired for 0-10V low voltage applications
DIM1	1% dimming driver prewired for 0-10V low voltage applications
DIM LINE	Line voltage dimming driver (TRIAC and ELV compatible, 120V only)
DIM TRC	Line voltage dimming driver (TRIAC compatible, 120V only)
DA	Driver with 12V auxiliary power
DSR	Sensor-ready driver (D4i DALI-2)
SD40	40% step-dimming driver
SD50	50% step-dimming driver
DALI	DALI dimming driver
LDE1	Lutron Hi-lume 1% EcoSystem dimming driver

