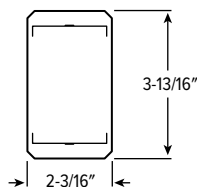
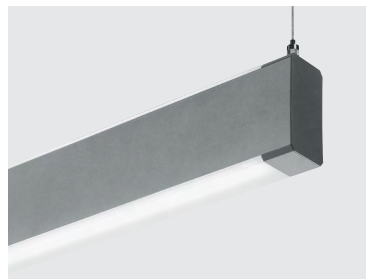


# AX2UD<sup>LED</sup> 2" Suspended Architectural Up/Down



CATALOG #: \_\_\_\_\_

TYPE: \_\_\_\_\_

PROJECT: \_\_\_\_\_



## FEATURES

- Sleek, slim architectural design provides direct or indirect light
- Slightly wrapped lens creates glowing edge and smooth illumination
- Attractive source of direct and indirect lighting for use in offices, hallways, conference rooms and medical facilities
- Wireless in-fixture control solutions available
- Made Right Here® in the USA

## SPECIFICATIONS

- HOUSING – Extruded aluminum.
- SHIELDING – Frosted acrylic lens.
- FINISH – Matte, smooth silver sparkle (ALUM) standard. All other colors default to textured finish. Polyester powder coat bonded to phosphate-free, multi-stage pretreated metal. All parts painted after fabrication to facilitate installation, increase efficiency, and inhibit corrosion.
- ELECTRICAL – High-quality mid-power LED boards. L70 at 60,000 hours per IES TM-21. 50/60 Hz constant current driver.
- MOUNTING – Suspended. 1/16" diameter adjustable steel leveling aircraft cable and mounting hardware necessary for grid ceiling applications provided.
- LISTINGS –
  - cCSAus certified as luminaire suitable for dry or damp locations.
  - Build America, Buy America (BABA) and Buy American Act (BAA) compliant. Request certification at [hew.com/buy-american](http://hew.com/buy-american)
- WARRANTY – 5-year limited warranty, see [hew.com/warranty](http://hew.com/warranty)

ORDERING EXAMPLE: AX2UD - 4 - L33/835U/L33/835D - S - AC/D48 - OPTIONS - CONTROL/DIM - UNV

## ORDERING INFO

SERIES	LENGTH	LUMEN PACKAGE (EXAMPLE: L33/835U/L33/835D)				FIXTURE TYPE
AX2UD	4 4'	Specify lumen packages: U for Uplight and D for Downlight				F Electrical feeder unit <sup>[1]</sup>
	8 8'	LUMENS <sup>[4]</sup>	CRI	CCT	U or D	J Joiner unit <sup>[2]</sup>
		4'	8 80	27 2700K	U Uplight	S Stand-alone unit <sup>[3]</sup>
		L16 1,600lm	9 90	30 3000K	D Downlight	
		L24 2,400lm		35 3500K		
		L33 3,300lm		40 4000K		
	8'			50 5000K		
		L33 3,300lm				
		L50 5,000lm				
		L66 6,600lm				

## MOUNTING (EXAMPLE: AC/D48) <sup>[5]</sup>

Prefix	Type	Length
AC/	D 1" grid & hardpan	24 24"
	N 9/16" grid	48 48"
	S Slot grid	96 96"

## OPTIONS <sup>[6]</sup>

See page 3 for FINISH OPTIONS.

EM/10WRM	Remote mount 10-watt emergency battery
EM/10WRM/RTS	Remote mount 10-watt emergency battery with regressed test switch
(L__)	Additional lower lumen packages available <sup>[7]</sup> Example: 3,000 nominal lumens = AX2UD-4-L33/835U/L33/835D-S-(L30)

## CONTROL <sup>[8]</sup>

See page 5 for ADDITIONAL CONTROL OPTIONS.

–	None
AVI-LVFA	Avi-on wireless fixture control. <sup>[10]</sup>
AVI-LVFA-CS2-PIR	Avi-on wireless fixture control with PIR motion and daylight sensor. <sup>[11]</sup>
AWNRR	Lutron Athena wireless node integral fixture control, RF only <sup>[12]</sup>
AWNS	Lutron Athena wireless node integral fixture control, RF with daylight and occupancy sensing <sup>[13]</sup>

## DRIVER <sup>[9]</sup>

See page 5 for ADDITIONAL DRIVER OPTIONS.

DIM	Driver with external 0-10V dimming wires. Up and down switch and dim together
DRV	Driver without external dimming wires. Up and down switch together
DA	Driver with 12V auxiliary power, without external dimming wires. Up and down switch together <sup>[14]</sup>
DSR	Sensor-ready driver without external dimming wires (D4i DALI-2). Up and down switch together <sup>[15]</sup>

## VOLTAGE

120	120V
277	277V
UNV	120-277V

## NOTES

- 1 3-conductor straight white cord standard. Wire gauge to be determined by row length, quick-connect wiring harness, two end plates, field installed.
- 2 No cord, quick-connect wiring harness, no end plates.
- 3 3-conductor straight white cord standard, two end plates installed.
- 4 Lumens based on 80 CRI/3500K CCT. Actual performance may vary +/-5%. Additional lumen packages available, see options.5 See page 2 for MOUNTING DETAILS.
- 6 Remote EM batteries: max remote distance 50', including suspension length. Large remote box provided. Specify CEC in the option code when California Energy Commission regulations are required. See page 3 for REMOTE MOUNT BATTERY DETAILS.
- 7 Specify in increments of 100 nominal lumens. Option must be specified with next higher lumen package.
- 8 Sensor recommended for use in downlight orientation only. See page 4 for AVI-ON BLUETOOTH WIRELESS CONTROL DETAILS. See page 3 for SENSOR & NODE PLACEMENT DETAILS.
- 9 Not available with DIMU/DIMD.
- 10 DA Driver only.
- 11 DA Driver only.
- 12 DA and DSR Drivers only.
- 13 DA and DSR Drivers only.
- 14 Avi-on and Lutron Athena Controls only.
- 15 Lutron Athena Controls only.



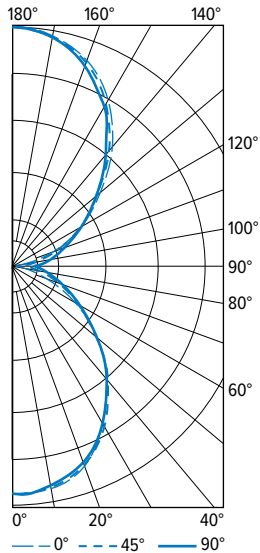
# AX2UD<sup>LED</sup> 2" Suspended Architectural Up/Down

## WATTAGE DETAILS

LED PACKAGE		TOTAL WATTS
UP	DOWN	
L16	L16	32
L24	L24	48
L33	L33	84
L50	L50	124
L66	L66	166

## PHOTOMETRY

AX2UD-4-L33/835U/L33/835D-S-UNV Total Luminaire Output: 6618 lumens; 82.9 Watts | Efficacy: 79.9 lm/W | 84 CRI; 3478K CCT

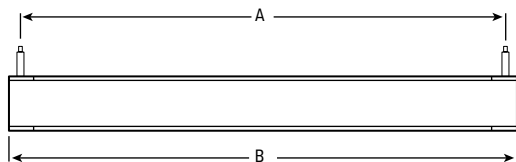


VERTICAL ANGLE	HORIZONTAL ANGLE			ZONAL LUMENS
	0°	45°	90°	
0	1297	1297	1297	
5	1315	1286	1277	123
15	1256	1243	1231	351
25	1131	1115	1106	518
35	935	938	922	587
45	712	719	710	556
55	489	517	512	460
65	288	336	353	329
75	125	191	231	199
85	30	93	145	101
90	6	64	120	
95	43	113	177	122
105	177	215	260	229
115	346	359	375	358
125	552	534	541	484
135	766	739	719	577
145	984	955	937	601
155	1163	1144	1119	531
165	1290	1283	1270	364
175	1351	1355	1342	129
180	1357	1357	1357	

LUMEN SUMMARY	ZONE	LUMENS	% FIXTURE
	0 - 30	993	15
	0 - 40	1580	24
	0 - 60	2595	39
	0 - 90	3224	49
	90 - 120	709	11
	90 - 150	2370	36
	90 - 180	3394	51
	0 - 180	6618	100

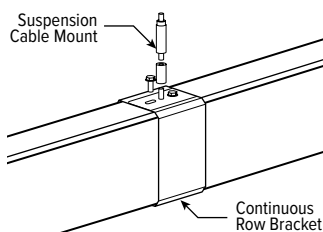
## MOUNTING DETAILS

### SIDE VIEW



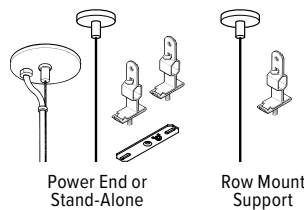
NOMINAL LENGTH	MOUNTING LENGTH (A)	ACTUAL LENGTH (B)
4'	46-13/16"	48-1/16"
8'	89-7/8"	91-1/8"

### CONTINUOUS ROW FIXTURES



When row mounting fixtures, joint between fixtures will be visible at 4' or 8' intervals depending on fixture length.

### STANDARD HARDWARE FOR SUSPENDED PRODUCT (Grid and Hardpan)



#### Notes:

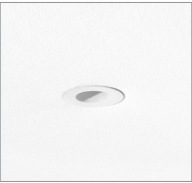
- Fixtures are provided with adjustable length aircraft cables and mounting hardware, must specify.
- Electrical supply is brought into the feeder fixture, either as part of a row or as a stand-alone unit. Joiner fixtures complete the row.
- The feeder kits are standard with a 5" canopy to cover the junction box and a 2" canopy at the non-feed point. No J-box is required at non-feed points.



# AX2UD<sup>LED</sup> 2" Suspended Architectural Up/Down

## REMOTE MOUNT BATTERY DETAILS

EM/10WRM/RTS



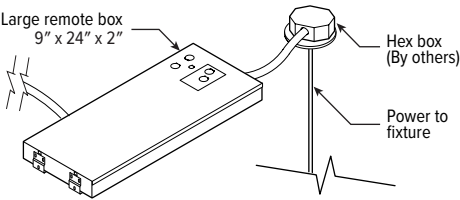
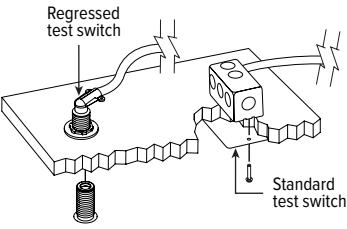
Regressed test switch  
ø1-3/4"

EM/10WRM



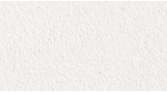
Standard test switch  
2-3/4" x 4-1/2"

Max remote distance is 50' including suspension length, connection by others.



## FINISH OPTIONS

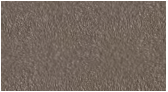
WHITE



BLACK



BRONZE



NICKEL



SILVER

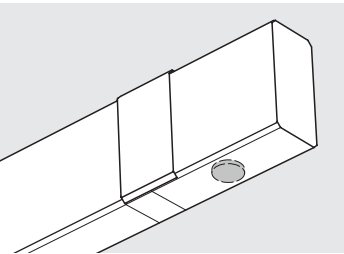


ALUM



For custom color, please specify RAL code or a manufacturer code with description. All custom colors other than RAL require two sample swatches, minimum 1" square.

## SENSOR & NODE PLACEMENT DETAILS



SEE NEXT PAGE FOR CONTROL DETAILS.



# AX2UD<sup>LED</sup> 2" Suspended Architectural Up/Down

## AVI-ON BLUETOOTH WIRELESS CONTROL DETAILS

### FEATURES

#### Simple

- Gateway-free distributed control
- Contractor friendly installation
- Occupancy/vacancy/daylight sensing

#### Scalable

- Virtually unlimited network size
- Spans small offices to large warehouses
- Flexible control strategies

#### Secure

- Optional cloud connectivity
- UL IoT platinum security rating
- DLC 5.0 compliant

### COMMISSIONING & INSTALLATION TOOLS

Avi-on mobile apps provide intuitive, quick installation and commissioning. Pro tools are available to qualified installers. Live commissioning training and on-site or remote support by Avi-on must be ordered separately through Avi-on.



Commissioning Mobile App

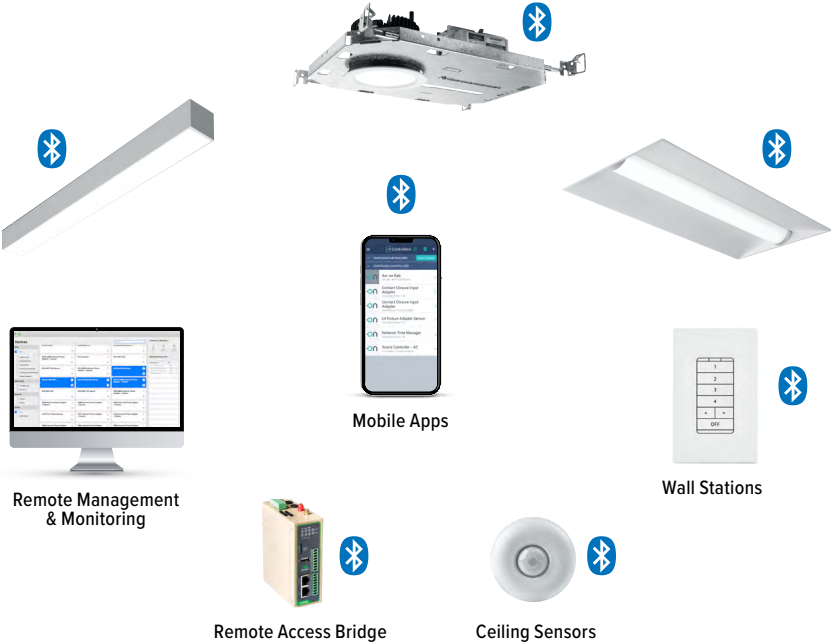


Zone Scanner Web App



Commissioning Pro App

### SYSTEM COMPONENTS



The Bluetooth® word mark and logos are registered trademarks owned by Bluetooth SIG, Inc. and any use of such marks by Avi-on is under license. Other trademarks and trade names are those of their respective owners.

### ACCESSORIES

WALL STATIONS	
AVI-B-2401AC-1	Scene controller - buttons numbered 1-4 and up/down/off, 120-277VAC
AVI-B-2402BAT-1	Scene controller - buttons numbered 1-4 and up/down/off, battery powered
AVI-B-2401AC-2	Dimmer with presets - buttons with percentages and up/down/off, 120-277VAC
AVI-B-2402BAT-2	Dimmer with presets - buttons with percentages and up/down/off, battery powered
AVI-B-2401AC-3	Two button control on/off or hold to dim up/down, 120-277VAC
AVI-B-2402BAT-3	Two button control on/off or hold to dim up/down, battery powered

NETWORK	
AVI-RAB-LTE	Remote access bridge
AVI-NTM	Network time manager with battery backup
CEILING MOUNT SENSORS	
AVI-KIT-SEN-DUCM	PIR motion and ultrasonic sensor kit
AVI-KIT-SEN-ICM	PIR motion and photocell sensor kit

For load controllers and additional accessory info, see [hew.com/avi-on](http://hew.com/avi-on)

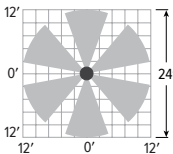
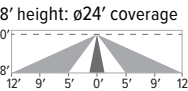
### AVI-LVFA-CS2-PIR Avi-on wireless fixture control with PIR motion and daylight sensor. DA Driver only.

SPECIFICATIONS	
TYPE	PIR Motion + Daylight
MOUNTING HEIGHT	8' - 10'
DETECTION ANGLE	360°
TEMPERATURE RANGE	-30° to 50°C
RELATIVE HUMIDITY	10 to 80% non-condensing
IP RATING	IP20
MANUFACTURER	Avi-On

Bluetooth® Lighting Controls

### SENSOR COVERAGE PATTERNS

#### Side View



### SENSOR DETAIL




Dimensions: 13/16" x 2-1/4"



# AX2UD<sup>LED</sup> 2" Suspended Architectural Up/Down

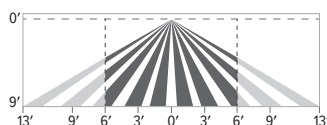
## ADDITIONAL CONTROL OPTIONS

**AWNS** Lutron Athena wireless node integral fixture control, RF with daylight and occupancy sensing. DA and DSR Drivers only.

SPECIFICATIONS	
TYPE	Radio Frequency
MOUNTING HEIGHT	8' – 12'
DETECTION ANGLE	360°
TEMPERATURE RANGE	0° to 55°C
RELATIVE HUMIDITY	0 to 90%, non-condensing
COMMISSIONING	Clear Connect gateway – Type X with app (iOS or Android)
MANUFACTURER	Lutron
	

### SENSOR COVERAGE PATTERNS

9' height: ø12' coverage



Motion Sensor Coverage

CEILING HEIGHT	COVERAGE AREA (SQ FT)
8'	114
9'	144
10'	178
12'	256

### SENSOR DETAIL



Dimensions: ø1-1/8"

## ATHENA CONTROL OPTIONS

CATALOG NUMBER	DESCRIPTION
AWNDR	Lutron Athena wireless node integral fixture control, RF only, for use with D4i DALI-2 or driver with 12V auxiliary power.
AWNS	Lutron Athena wireless node integral fixture control, RF with daylight and occupancy sensing, for use with D4i DALI-2 or driver with 12V auxiliary power.
AWNDR-BL	Lutron Athena wireless node integral fixture control, RF only, for use with D4i DALI-2 or driver with 12V auxiliary power, black finish.
AWNS-BL	Lutron Athena wireless node integral fixture control, RF with daylight and occupancy sensing, for use with D4i DALI-2 or driver with 12V auxiliary power, black finish.

## ADDITIONAL DRIVER OPTIONS

Note: Lumen restrictions apply, consult product builder at [hew.com/product-builder](http://hew.com/product-builder)

CATALOG NUMBER	DESCRIPTION
DRV	Driver without external dimming wires prewired for non-dimming applications; entire fixture switches together
DIM	Driver with external dimming wires prewired for 0-10V low voltage applications; entire fixture switches and dims together
DRVU/DRVD	Driver without external dimming wires prewired for non-dimming applications; up and down portions switch separately
DRVU/DIMD	Driver without external dimming wires prewired for non-dimming applications; up and down switch separately; external dimming wires on down portion only
DIMU/DRVD	Up and down portions switch separately; driver with external dimming wires prewired for 0-10V low voltage applications on up portion only
DRVDIMU	Entire fixture switches together; driver with external dimming wires prewired for 0-10V low voltage applications on up portion only
DRVDIMD	Entire fixture switches together; driver with external dimming wires prewired for 0-10V low voltage applications on down portion only
DIM1	1% driver with external dimming wires prewired for 0-10V low voltage applications
DIM LINE	Line voltage dimming driver (TRIAC and ELV compatible, 120V only)
DIM TRC	Line voltage dimming driver (TRIAC compatible, 120V only)
DIM LINEU/DIM LINED	Line voltage switching and line voltage dimming; up and down portions switch separately
DIM LINEU/DRVD	Up and down portions switch separately; line voltage dimming on up portion only
DRVU/DIM LINED	Up and down portions switch separately; line voltage dimming on down portion only
DA	Driver with 12V auxiliary power, without external dimming wires. Up and down switch together.
DA-U/D	Driver with 12V auxiliary power, without external dimming wires. Up and down switch separately.
DSR	Sensor-ready driver without external dimming wires (D4i DALI-2). Up and down switch together.
DSR-U/D	Sensor-ready driver without external dimming wires (D4i DALI-2). Up and down switch separately.

