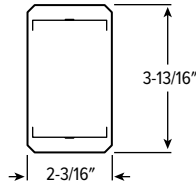
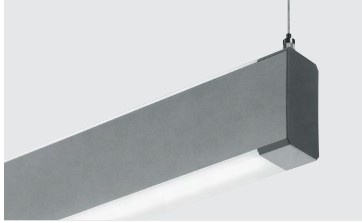


AX2UD PoE | tunable WHITE

2" Suspended Architectural Up/Down



CATALOG #: _____

TYPE: _____

PROJECT: _____

FEATURES

- Deliver scalable, data-driven smart buildings with PoE-enabled fixtures and controls
- Support human-centric design with adaptive, individualized lighting using tunable white light
- Sleek, slim architectural design provides direct or indirect light
- Slightly wrapped lens creates glowing edge and smooth illumination
- Attractive source of direct or indirect lighting for use in offices, hallways, conference rooms and medical facilities
- Made Right Here® in the USA



ORDERING EXAMPLE: AX2UD - 4 - P23U/P23D/835 - S - AC/D48 - OPTIONS - POE PR

ORDERING INFO

SERIES	LENGTH	LUMEN PACKAGE (EXAMPLE: P23U/P23D/835)				FIXTURE TYPE	
AX2UD	4 4'	Specify lumen packages: U for Uplight and D for Downlight				F Feeder unit ^[1]	
	8 8'					J Joiner unit ^[2]	
		LUMENS ^[4]	U or D	CRI	CCT	S Stand-alone unit ^[3]	
	4'		U Uplight	8 80	27 2700K		
	P23 2,300lm		D Downlight	9 90 ^[5]	30 3000K		
	8'				35 3500K		
	P47 4,700lm				40 4000K		
					50 5000K		
					TW Tunable white (3000K-5000K)		
					TW2 Tunable white (2700K-6500K)		

SPECIFICATIONS

- HOUSING – Extruded aluminum.
- SHIELDING – Frosted acrylic lens.
- FINISH – Matte, smooth silver sparkle (ALUM) standard. All other colors default to textured finish. Polyester powder coat bonded to phosphate-free, multi-stage pretreated metal. All parts painted after fabrication to facilitate installation, increase efficiency, and inhibit corrosion.
- ELECTRICAL – High-quality mid-power LED board. L70 > 60,000 hours per IES TM-21. Low-voltage DC fixture, to be fed by Class 2 power supply. Tunable White products use LEDs of multiple CCTs and may produce a perceptibly different shade of white from single-CCT products at the same CCT. All CCTs are within 3 MacAdam ellipses.
- MOUNTING – Suspended. 1/16" diameter adjustable steel leveling aircraft cable and mounting hardware necessary for grid ceiling applications provided.
- LISTINGS –
 - cCSAus certified as luminaire suitable for dry or damp locations.
 - Complies with the Buy American Act and other federal regulations. Request certification at hew.com/baa.
- WARRANTY – 5-year limited warranty, see hew.com/warranty.

MOUNTING (EXAMPLE: AC/D48) ^[6]

Prefix	Type	Length
AC/	D 1" grid & hardpan	24 24"
	N 9/16" grid	48 48"
	S Slot grid	96 96"

OPTIONS

See page 3 for FINISH OPTIONS

CONTROL ^[7]

POE PR Power over Ethernet-ready

SYSTEM REQUIREMENTS

- PoE-ready luminaires are connected to building power systems through network integration and require other components for complete PoE lighting system
- For additional PoE info, see hew.com/poe

NOTES

- Straight white cord standard, two end plates, field installed.
- Straight white cord standard, no end plates
- Straight white cord standard, two end plates installed
- Nominal lumen output based on 80 CRI, 3000K for single CCT and 4000K for TW. Actual lumens may vary +/-5%. See page 2 for FIXTURE PERFORMANCE DATA
- Extended lead times may apply. Consult factory for availability.
- See page 3 for MOUNTING DETAILS
- For additional PoE connection details, consult factory.



AX2UD PoE | tunable WHITE

2" Suspended Architectural Up/Down

FIXTURE PERFORMANCE DATA

STANDARD

	LED PACKAGE	DELIVERED LUMENS	WATTAGE	EFFICACY (lm/W)
4'	P23	2304	23.0	100
8'	P47 ¹	4734	44.6	106

TUNABLE WHITE

	LED PACKAGE	DELIVERED LUMENS	WATTAGE	EFFICACY (lm/W)
4'	P23	2302	25.6	90
8'	P47 ¹	4717	50.2	94

MULTIPLIER TABLES

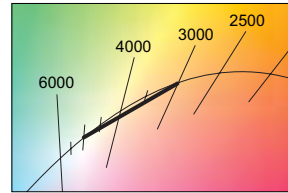
	COLOR TEMPERATURE			
	CCT	STANDARD	TW	TW2
80 CRI	2700K	0.97	-	0.93
	3000K	0.99	0.95	0.95
	3500K	1.00	0.98	0.98
	4000K	1.03	1.00	1.00
	5000K	1.06	0.96	1.02
6500K	-	-	-	1.01

90 CRI	2700K	0.80	-	0.93
	3000K	0.82	0.91	0.95
	3500K	0.83	0.96	0.98
	4000K	0.86	1.00	1.00
	5000K	0.89	1.03	1.03
	6500K	-	-	-

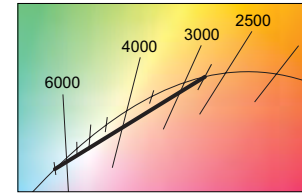
- Photometrics tested in accordance with IESNA LM-79. Results shown are based on 25°C ambient temperature.
- Standard results based on 3500K, 80CRI, actual lumens may vary +/-5%.
- Tunable white results based on 4000K, 80 CRI, actual lumens may vary +/-5%.
- Use multiplier tables to calculate additional options.
- Fixture performance is the same for up and downlight.

¹ Fixture contains two nodes, one power drop per node required.

TW

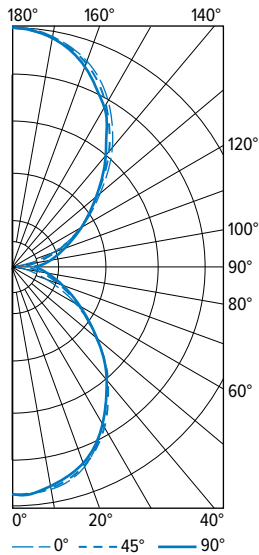


TW2



PHOTOMETRY

AX2UD-4-P23U/P23D/835-S Total Luminaire Output: 4608 lumens; 46 Watts | Efficacy: 100 lm/W | 80 CRI; 3500K CCT



VERTICAL ANGLE	HORIZONTAL ANGLE			ZONAL LUMENS
	0°	45°	90°	
0	904	904	904	
5	917	897	891	85
15	876	867	858	244
25	789	778	771	359
35	652	654	643	407
45	497	501	495	387
55	341	361	357	320
65	201	234	246	231
75	87	133	161	141
85	21	65	101	73
90	4	45	84	
95	30	79	123	85
105	123	150	181	161
115	241	250	262	251
125	385	372	377	337
135	534	515	501	400
145	686	666	653	418
155	811	798	780	368
165	900	895	886	252
175	942	945	936	89
180	946	946	946	

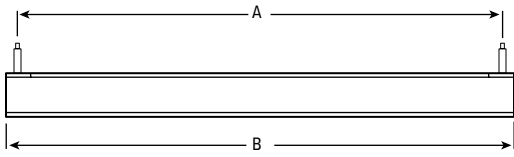
LUMEN SUMMARY	ZONE	LUMENS	% FIXTURE
	0 - 30	688	15
0 - 40	1095	24	
0 - 60	1802	39	
0 - 90	2246	49	
90 - 120	497	11	
90 - 150	1653	36	
90 - 180	2362	51	
0 - 180	4608	100	



AX2UD PoE | tunable **WHITE** 2" Suspended Architectural Up/Down

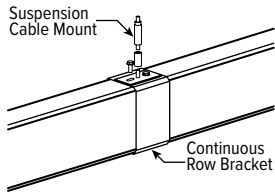
MOUNTING DETAILS

SIDE VIEW



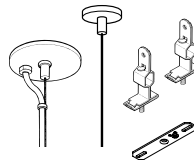
NOMINAL LENGTH	MOUNTING LENGTH (A)	ACTUAL LENGTH (B)
4'	46-13/16"	48-1/16"
8'	89-7/8"	91-1/8"

CONTINUOUS ROW FIXTURES



When row mounting fixtures, joint between fixtures will be visible at 4' or 8' intervals depending on fixture length.

STANDARD HARDWARE (Grid & Hardpan)



- Fixtures are provided with adjustable length aircraft cables and mounting hardware, must specify.
- Electrical supply is brought into the feeder fixture, either as part of a row or as a stand-alone unit. One power drop per node required.

FINISH OPTIONS

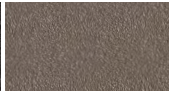
WHITE



BLACK



BRONZE



NICKEL



SILVER



ALUM



For custom color, please specify RAL code or a manufacturer code with description. All custom colors other than RAL require two sample swatches, minimum 1" square.

