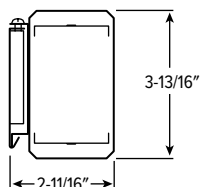
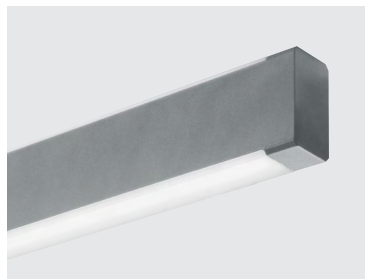


AX2WUD LED

2" Wall Mount Architectural Up/Down



CATALOG #: _____

TYPE: _____

PROJECT: _____



FEATURES

- Sleek, linear, ADA Compliant design incorporates clean lines and slim styling
- Slightly wrapped lens creates glowing edge and smooth illumination
- Attractive source of direct and indirect lighting for use in offices, hallways, conference rooms and medical facilities
- Suspended and wall mount styles add design flexibility and continuity
- Wireless in-fixture control solutions available
- Made Right Here® in the USA

SPECIFICATIONS

- HOUSING – Extruded aluminum.
- SHIELDING – Frosted acrylic lens.
- FINISH – Matte, smooth silver sparkle (ALUM) standard. All other colors default to textured finish. Polyester powder coat bonded to phosphate-free, multi-stage pretreated metal. All parts painted after fabrication to facilitate installation, increase efficiency, and inhibit corrosion.
- ELECTRICAL – High-quality mid-power LED boards. L70 at 60,000 hours per IES TM-21. 50/60 Hz constant current driver.
- MOUNTING – Wall.
- LISTINGS –
 - cCSAus certified as luminaire suitable for dry or damp locations.
 - ADA Compliant
 - Build America, Buy America (BABA) and Buy American Act (BAA) compliant. Request certification at hew.com/buy-american
- WARRANTY – 5-year limited warranty, see hew.com/warranty

ORDERING EXAMPLE: AX2WUD - 4 - L33/835U/L33/835D - S - OPTIONS - CONTROL/DIM - UNV

ORDERING INFO

SERIES	LENGTH	LUMEN PACKAGE (EXAMPLE: L33/835U/L33/835D)				FIXTURE TYPE
AX2WUD	4 4'	Specify lumen packages: U for Uplight and D for Downlight				F Electrical feeder unit ^[1]
	8 8'	LUMENS ^[4]	CRI	CCT	U or D	J Joiner unit ^[2]
		4'	8 80	27 2700K	U Uplight	S Stand-alone unit ^[3]
		L16 1,600lm	9 90	30 3000K	D Downlight	
		L24 2,400lm		35 3500K		
		L33 3,300lm		40 4000K		
	8'			50 5000K		
		L33 3,300lm				
		L50 5,000lm				
		L66 6,600lm				

OPTIONS ^[5]

See page 3 for FINISH OPTIONS.

EM/10WRM	Remote mount 10-watt emergency battery
EM/10WRM/RTS	Remote mount 10-watt emergency battery with regressed test switch
(L___)	Additional lower lumen packages available ^[7] Example: 3,000 nominal lumens = AX2WUD-4-L33/835U/L33/835D-S-(L30)

CONTROL ^[6]

See page 5 for ADDITIONAL CONTROL OPTIONS.

–	None
AVI-LVFA	Avi-on wireless fixture control. ^[8]
AVI-LVFA-CS2-PIR	Avi-on wireless fixture control with PIR motion and daylight sensor. ^[9]
AWNRR	Lutron Athena wireless node integral fixture control, RF only ^[10]
AWNS	Lutron Athena wireless node integral fixture control, RF with daylight and occupancy sensing ^[11]

DRIVER

See page 3 for ADDITIONAL DRIVER OPTIONS.

DIM	Driver with external 0-10V dimming wires. Up and down switch and dim together
DRV	Driver without external dimming wires. Up and down switch together
DA	Driver with 12V auxiliary power, without external dimming wires. Up and down switch together ^[12]
DSR	Sensor-ready driver without external dimming wires (D4i DALI-2). Up and down switch together ^[13]

VOLTAGE

120	120V
277	277V
UNV	120-277V

NOTES

- ¹ Quick-connect wiring harness, two end plates, field installed.
- ² Quick-connect wiring harness, no end plates.
- ³ Two end plates installed.
- ⁴ Lumens based on 80 CRI/3500K CCT. Actual performance may vary +/-5%. Additional lumen packages available, see options.
- ⁵ Remote EM batteries: max remote distance 50'. Large remote box provided. Specify CEC in the option code when California Energy Commission regulations are required. See page 2 for REMOTE MOUNT BATTERY DETAILS.

- ⁶ Sensor recommended for use in downlight orientation only. See page 3 for SENSOR & NODE PLACEMENT DETAILS. See page 4 for AVI-ON BLUETOOTH WIRELESS CONTROL DETAILS.
- ⁷ Specify in increments of 100 nominal lumens. Option must be specified with next higher lumen package.
- ⁸ DA Driver only.
- ⁹ DA Driver only.
- ¹⁰ DA and DSR Drivers only.
- ¹¹ DA and DSR Drivers only.
- ¹² Avi-on and Lutron Athena Controls only.
- ¹³ Lutron Athena Controls only.

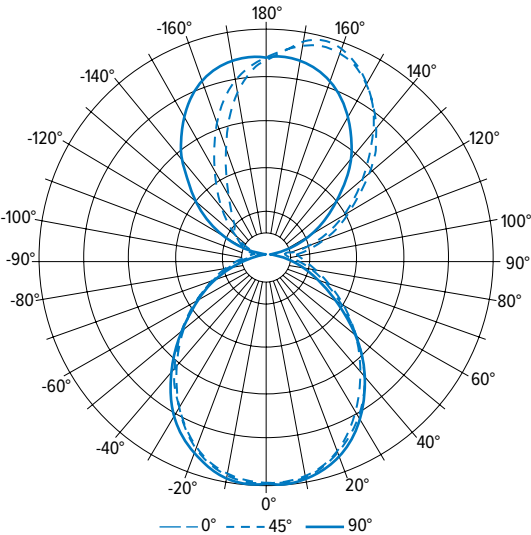


AX2WUD^{LED}

2" Wall Mount Architectural Up/Down

PHOTOMETRY

AX2WUD-4-L33/835U/L33/835D-S-ASY-UNV Total Luminaire Output: 5789 lumens; 82.8 Watts | Efficacy: 69.9 lm/W | 84.5 CRI; 3514K CCT

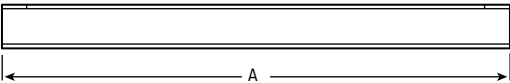


VERTICAL ANGLE	HORIZONTAL ANGLE					ZONAL LUMENS
	0°	45°	90°	135°	180°	
0	1251	1251	1251	1251	1251	
5	1250	1252	1257	1235	1251	119
15	1187	1195	1206	1185	1188	336
25	1056	1068	1096	1054	1048	494
35	872	916	921	881	863	559
45	695	700	706	680	661	524
55	509	501	477	472	474	431
65	363	344	283	300	315	311
75	244	209	120	162	192	188
85	169	105	16	60	82	87
90	160	94	0	37	61	
95	219	156	38	58	94	113
105	333	280	142	104	131	199
115	483	442	277	165	170	295
125	651	616	454	234	213	393
135	844	802	623	344	258	457
145	1000	1002	803	479	348	473
155	1146	1133	947	666	529	420
165	1199	1173	1043	870	767	290
175	1104	1105	1077	1026	986	102
180	1067	1067	1067	1067	1067	

LUMEN SUMMARY	ZONE	LUMENS	% FIXTURE
	0 - 30	949	16
	0 - 40	1508	26
	0 - 60	2463	43
	0 - 90	3048	53
	90 - 120	606	11
	90 - 150	999	17
	90 - 180	1929	33
	0 - 180	5789	100

MOUNTING DETAILS

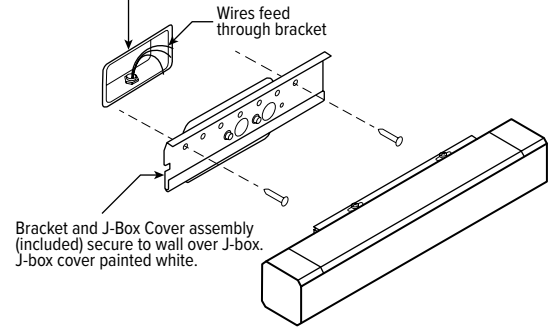
SIDE VIEW



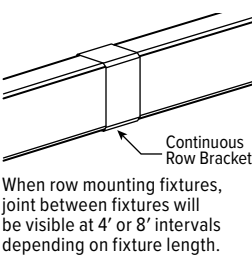
NOMINAL LENGTH	ACTUAL LENGTH (A)
4'	48-1/16"
8'	91-1/8"

MOUNTING

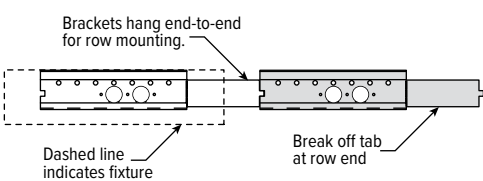
J-Box (not provided) mounted **horizontally** (if attaching to existing vertical J-box, J-box cover will be partially visible below fixture).



CONTINUOUS ROW FIXTURES

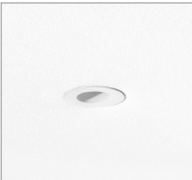


ROW MOUNTING



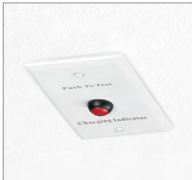
REMOTE MOUNT BATTERY DETAILS

EM/10WRM/RTS



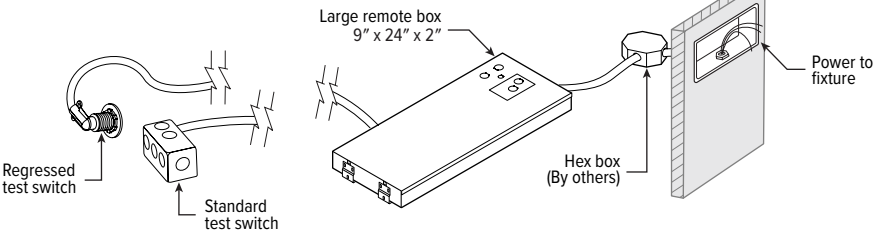
Regressed test switch
ø1-3/4"

EM/10WRM



Standard test switch
2-3/4" x 4-1/2"

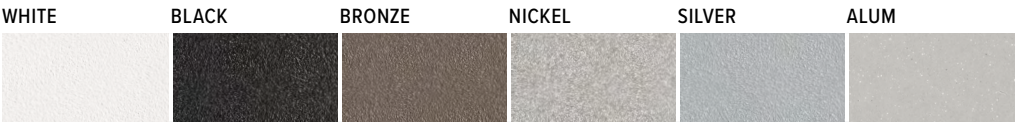
Max remote distance is 50', connection by others.



AX2WUD^{LED}

2" Wall Mount Architectural Up/Down

FINISH OPTIONS



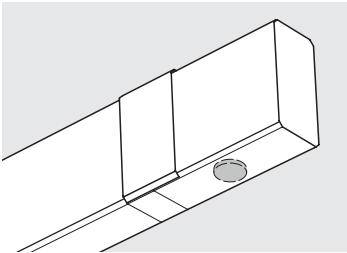
For custom color, please specify RAL code or a manufacturer code with description. All custom colors other than RAL require two sample swatches, minimum 1" square.

ADDITIONAL DRIVER OPTIONS

Note: Lumen restrictions apply, consult product builder at hew.com/product-builder

CATALOG NUMBER	DESCRIPTION
DRV	Driver without external dimming wires prewired for non-dimming applications; entire fixture switches together
DIM	Driver with external dimming wires prewired for 0-10V low voltage applications; entire fixture switches and dims together
DRVU/DRV	Driver without external dimming wires prewired for non-dimming applications; up and down portions switch separately
DRVU/DIM	Driver without external dimming wires prewired for non-dimming applications; up and down switch separately; external dimming wires on down portion only
DIMU/DRV	Up and down portions switch separately; driver with external dimming wires prewired for 0-10V low voltage applications on up portion only
DIMU/DIM	Driver with external dimming wires prewired for 0-10V low voltage applications; up and down portions switch and dim separately
DRV DIMU	Entire fixture switches together; driver with external dimming wires prewired for 0-10V low voltage applications on up portion only
DRV DIMD	Entire fixture switches together; driver with external dimming wires prewired for 0-10V low voltage applications on down portion only
DIM1	1% driver with external dimming wires prewired for 0-10V low voltage applications
DIM LINE	Line voltage dimming driver (TRIAC and ELV compatible, 120V only)
DIM TRC	Line voltage dimming driver (TRIAC compatible, 120V only)
DIM LINEU/DIM LINED	Line voltage switching and line voltage dimming; up and down portions switch separately
DIM LINEU/DRV	Up and down portions switch separately; line voltage dimming on up portion only
DRVU/DIM LINED	Up and down portions switch separately; line voltage dimming on down portion only
DA	Driver with 12V auxiliary power, without external dimming wires. Up and down switch together.
DA-U/D	Driver with 12V auxiliary power, without external dimming wires. Up and down switch separately.
DSR	Sensor-ready driver without external dimming wires (D4i DALI-2). Up and down switch together.
DSR-U/D	Sensor-ready driver without external dimming wires (D4i DALI-2). Up and down switch separately.

SENSOR & NODE PLACEMENT DETAILS



SEE NEXT PAGE FOR CONTROL DETAILS.



AX2WUD^{LED} 2" Wall Mount Architectural Up/Down

AVI-ON BLUETOOTH WIRELESS CONTROL DETAILS

FEATURES

Simple

- Gateway-free distributed control
- Contractor friendly installation
- Occupancy/vacancy/daylight sensing

Scalable

- Virtually unlimited network size
- Spans small offices to large warehouses
- Flexible control strategies

Secure

- Optional cloud connectivity
- UL IoT platinum security rating
- DLC 5.0 compliant

COMMISSIONING & INSTALLATION TOOLS

Avi-on mobile apps provide intuitive, quick installation and commissioning. Pro tools are available to qualified installers. Live commissioning training and on-site or remote support by Avi-on must be ordered separately through Avi-on.



Commissioning Mobile App

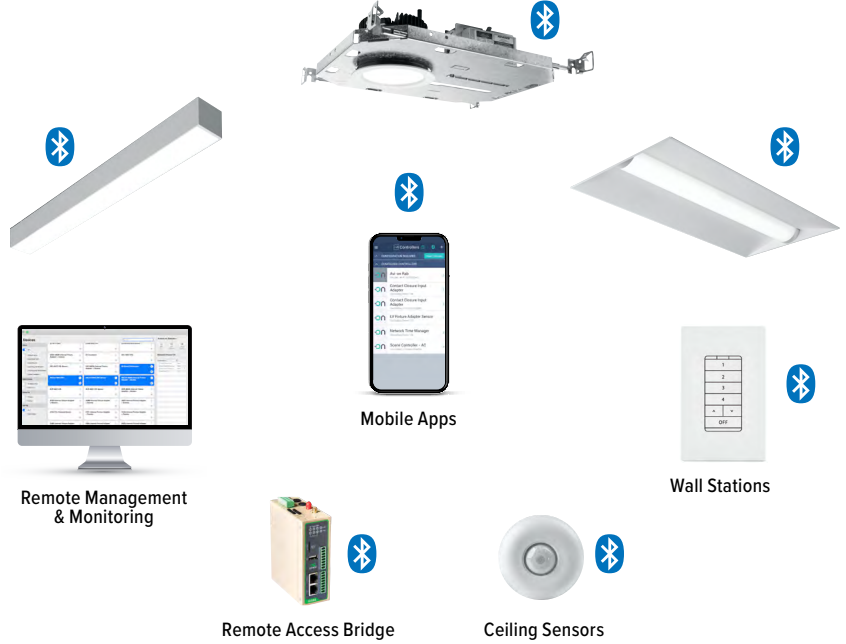


Zone Scanner Web App



Commissioning Pro App

SYSTEM COMPONENTS



The Bluetooth® word mark and logos are registered trademarks owned by Bluetooth SIG, Inc. and any use of such marks by Avi-on is under license. Other trademarks and trade names are those of their respective owners.


ACCESSORIES

WALL STATIONS	
AVI-B-2401AC-1	Scene controller - buttons numbered 1-4 and up/down/off, 120-277VAC
AVI-B-2402BAT-1	Scene controller - buttons numbered 1-4 and up/down/off, battery powered
AVI-B-2401AC-2	Dimmer with presets - buttons with percentages and up/down/off, 120-277VAC
AVI-B-2402BAT-2	Dimmer with presets - buttons with percentages and up/down/off, battery powered
AVI-B-2401AC-3	Two button control on/off or hold to dim up/down, 120-277VAC
AVI-B-2402BAT-3	Two button control on/off or hold to dim up/down, battery powered

NETWORK	
AVI-RAB-LTE	Remote access bridge
AVI-NTM	Network time manager with battery backup
CEILING MOUNT SENSORS	
AVI-KIT-SEN-DUCM	PIR motion and ultrasonic sensor kit
AVI-KIT-SEN-ICM	PIR motion and photocell sensor kit

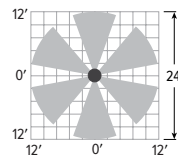
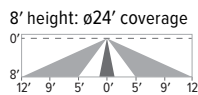
For load controllers and additional accessory info, see hew.com/avi-on

AVI-LVFA-CS2-PIR Avi-on wireless fixture control with PIR motion and daylight sensor. DA Driver only.

SPECIFICATIONS	
TYPE	PIR Motion + Daylight
MOUNTING HEIGHT	8' – 10'
DETECTION ANGLE	360°
TEMPERATURE RANGE	-30° to 50°C
RELATIVE HUMIDITY	10 to 80% non-condensing
IP RATING	IP20
MANUFACTURER	Avi-On
	

SENSOR COVERAGE PATTERNS

Side View



SENSOR DETAIL



Dimensions: 13/16" x 2-1/4"




AX2WUD^{LED}

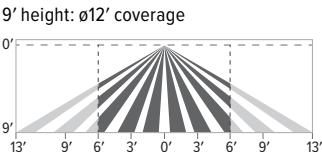
2" Wall Mount Architectural Up/Down

ADDITIONAL CONTROL OPTIONS

AWNS Lutron Athena wireless node integral fixture control, RF with daylight and occupancy sensing. DA and DSR Drivers only.

SPECIFICATIONS	
TYPE	Radio Frequency
MOUNTING HEIGHT	8' – 12'
DETECTION ANGLE	360°
TEMPERATURE RANGE	0° to 55°C
RELATIVE HUMIDITY	0 to 90%, non-condensing
COMMISSIONING	Clear Connect gateway – Type X with app (iOS or Android)
MANUFACTURER	Lutron
	

SENSOR COVERAGE PATTERNS



Motion Sensor Coverage

CEILING HEIGHT	COVERAGE AREA (SQ FT)
8'	114
9'	144
10'	178
12'	256

SENSOR DETAIL



Dimensions: ø1-1/8"

ATHENA CONTROL OPTIONS

CATALOG NUMBER	DESCRIPTION
AWNDR	Lutron Athena wireless node integral fixture control, RF only, for use with D4i DALI-2 or driver with 12V auxiliary power.
AWNS	Lutron Athena wireless node integral fixture control, RF with daylight and occupancy sensing, for use with D4i DALI-2 or driver with 12V auxiliary power.
AWNDR-BL	Lutron Athena wireless node integral fixture control, RF only, for use with D4i DALI-2 or driver with 12V auxiliary power, black finish.
AWNS-BL	Lutron Athena wireless node integral fixture control, RF with daylight and occupancy sensing, for use with D4i DALI-2 or driver with 12V auxiliary power, black finish.

