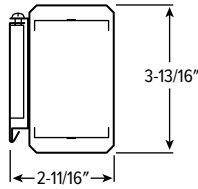
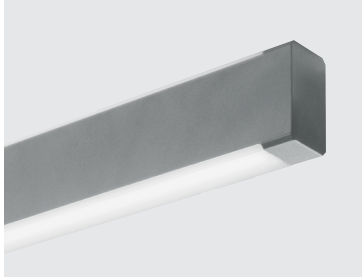


AX2WUD PoE

2" Wall Mount Architectural Up/Down



CATALOG #: _____

TYPE: _____

PROJECT: _____



FEATURES

- Sleek, linear, ADA Compliant design incorporates clean lines and slim styling
- Deliver scalable, data-driven smart buildings with PoE-enabled fixtures and controls
- Sleek, slim architectural design provides direct or indirect light
- Slightly wrapped lens creates glowing edge and smooth illumination
- Attractive source of direct or indirect lighting for use in offices, hallways, conference rooms and medical facilities
- Made Right Here® in the USA

ORDERING EXAMPLE: AX2WUD - 4 - P25U/P25D/835 - S - OPTIONS - POE PR

ORDERING INFO

SERIES	LENGTH	LUMEN PACKAGE (EXAMPLE: P25U/P25D/835)				CCT	FIXTURE TYPE
		LUMENS ^[4]	U or D	CRI	CCT		
AX2WUD	4 4'	Specify lumen packages: U for Uplight and D for Downlight					F Feeder unit ^[1]
	8 8'	P25 2,500lm	U Uplight	8 80	27	2700K	J Joiner unit ^[2]
			D Downlight	9 90 ^[5]	30	3000K	S Stand-alone unit ^[3]
			P51 5,100lm		35	3500K	
				40	4000K		
				50	5000K		

SPECIFICATIONS

- HOUSING – Extruded aluminum.
- SHIELDING – Frosted acrylic lens.
- FINISH – Matte, smooth silver sparkle (ALUM) standard. All other colors default to textured finish. Polyester powder coat bonded to phosphate-free, multi-stage pretreated metal. All parts painted after fabrication to facilitate installation, increase efficiency, and inhibit corrosion.
- ELECTRICAL – High-quality mid-power LED board. L70 > 60,000 hours per IES TM-21. Low-voltage DC fixture, to be fed by Class 2 power supply.
- MOUNTING – Wall
- LISTINGS –
 - cCSAus certified as luminaire suitable for dry or damp locations.
 - ADA Compliant
 - Complies with the Buy American Act and other federal regulations. Request certification at hew.com/baa.
- WARRANTY – 5-year limited warranty, see hew.com/warranty.

OPTIONS

See page 3 for FINISH OPTIONS

CONTROL^[6]

POE PR Power over Ethernet-ready

SYSTEM REQUIREMENTS

- PoE-ready luminaires are connected to building power systems through network integration and require other components for complete PoE lighting system
- For additional PoE info, see hew.com/poe

NOTES

- Two end plates, field installed.
- No end plates.
- Two end plates installed.
- Lumen output based on 80 CRI/3500K CCT. Actual performance may vary +/-5%. See page 2 for FIXTURE PERFORMANCE DATA.
- Extended lead times may apply. Consult factory for availability.
- For additional PoE connection details, consult factory.



AX2WUD PoE 2" Wall Mount Architectural Up/Down

FIXTURE PERFORMANCE DATA

UP OR DOWNLIGHT

	LED PACKAGE	LUMENS	WATTAGE	EFFICACY (LM/W)
4	P25	2515	25	101
8	P51 ¹⁾	5114	49	104

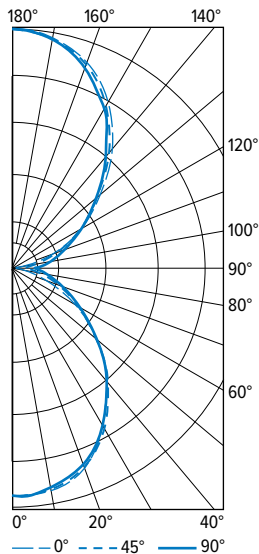
- ¹ Fixture contains two nodes; one power drop per node required.
- Photometrics tested in accordance with IESNA LM-79. Results based on 80 CRI/3500K CCT, average wattage for 120V through 277V input, and 25°C ambient temperature. Actual performance may vary +/-5%
- Fixture performance is the same for up and downlight.
- Use multiplier table to calculate additional options.

MULTIPLIER TABLE

		COLOR TEMPERATURE	
		CCT	CONVERSION FACTOR
80 CRI		2700K	0.97
		3000K	0.99
		3500K	1.00
		4000K	1.03
		5000K	1.06
90 CRI		2700K	0.80
		3000K	0.82
		3500K	0.83
		4000K	0.86
		5000K	0.89

PHOTOMETRY

AX2WUD-4-P25U/P25D/835-S Total Luminaire Output: 5030 lumens; 50 Watts | Efficacy: 101 lm/W | 80 CRI; 3500K CCT

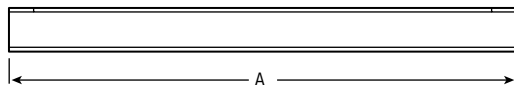


CANDLEPOWER DISTRIBUTION	VERTICAL ANGLE	HORIZONTAL ANGLE			ZONAL LUMENS
		0°	45°	90°	
	0	987	987	987	
	5	1001	979	972	93
	15	956	946	937	266
	25	861	849	842	392
	35	712	714	702	444
	45	542	547	540	422
	55	372	394	390	350
	65	219	256	269	252
	75	95	145	176	154
	85	23	71	110	80
	90	5	49	91	
	95	33	86	135	93
	105	135	164	198	176
	115	263	273	285	274
	125	420	406	412	368
	135	583	563	547	437
	145	749	727	713	456
	155	885	871	852	402
	165	982	977	967	275
	175	1028	1031	1022	97
	180	1033	1033	1033	

LUMEN SUMMARY	ZONE	LUMENS	% FIXTURE
	0 - 30	751	15
	0 - 40	1195	24
	0 - 60	1967	39
	0 - 90	2452	49
	90 - 120	543	11
	90 - 150	1804	36
	90 - 180	2579	51
	0 - 180	5030	100

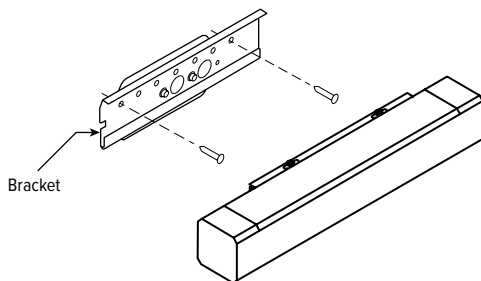
MOUNTING DETAILS

SIDE VIEW

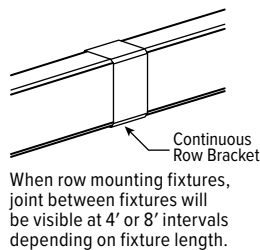


NOMINAL LENGTH	ACTUAL LENGTH (A)
4'	48-1/16"
8'	91-1/8"

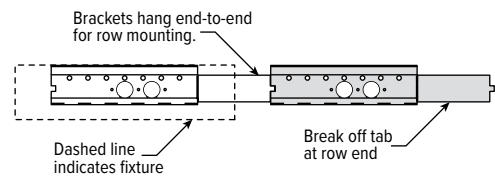
MOUNTING



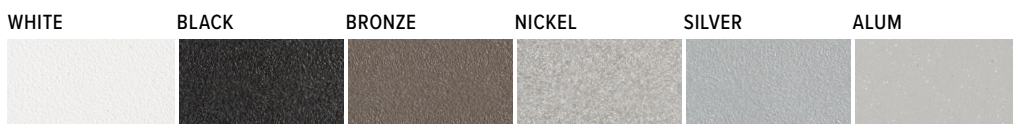
CONTINUOUS ROW FIXTURES



ROW MOUNTING



FINISH OPTIONS



For custom color, please specify RAL code or a manufacturer code with description. All custom colors other than RAL require two sample swatches, minimum 1" square.

