

CATALOG #: \_\_\_\_\_

TYPE: \_\_\_\_\_

PROJECT: \_\_\_\_\_



## FEATURES

- Sleek, linear, ADA Compliant design incorporates clean lines and slim styling
- Slightly wrapped lens creates glowing edge and smooth illumination
- Attractive source of direct or indirect lighting for use in offices, hallways, conference rooms and medical facilities
- Suspended and wall mount styles add design flexibility and continuity
- Wireless in-fixture control solutions available
- Made Right Here® in the USA

## SPECIFICATIONS

- HOUSING – Extruded aluminum.
- SHIELDING – Frosted acrylic lens.
- FINISH – Matte, smooth silver sparkle (ALUM) standard. All other colors default to textured finish. Polyester powder coat bonded to phosphate-free, multi-stage pretreated metal. All parts painted after fabrication to facilitate installation, increase efficiency, and inhibit corrosion.
- ELECTRICAL – High-quality mid-power LED boards. L70 at 60,000 hours per IES TM-21. 50/60 Hz constant current driver.
- MOUNTING – Wall.
- LISTINGS –
  - cCSAus certified as luminaire suitable for dry or damp locations.
  - ADA Compliant.
  - Build America, Buy America (BABA) and Buy American Act (BAA) compliant. Request certification at [hew.com/buy-american](http://hew.com/buy-american)
- WARRANTY – 5-year limited warranty, see [hew.com/warranty](http://hew.com/warranty)

## ORDERING EXAMPLE: AX2WU - 4 - L33/835 - S - OPTIONS - CONTROL/DIM - UNV

### ORDERING INFO

SERIES	LENGTH	LUMENS <sup>(1)</sup>	CRI	CCT	FIXTURE TYPE
AX2WD Down	2 2'	2'	8 80	27 2700K	F Electrical feeder unit <sup>(2)</sup>
AX2WU Up	4 4'	L16 1,600lm	9 90	30 3000K	J Joiner unit <sup>(3)</sup>
	8 8'	4' L33 3,300lm		35 3500K	S Stand-alone unit <sup>(4)</sup>
		8' L66 6,600lm		40 4000K	
				50 5000K	

### OPTIONS <sup>(5)</sup>

See page 3 for FINISH OPTIONS.

EM/10WRM	Remote mount 10-watt emergency battery
EM/10WRM/RTS	Remote mount 10-watt emergency battery with regressed test switch
ASY	Asymmetric reflector <sup>(7)</sup>
(L__)	Additional lower lumen packages available <sup>(8)</sup> Example: 2,500 nominal lumens = AX2U-4-L33/835-S-(L25)

### CONTROL <sup>(6)</sup>

See page 5 for ADDITIONAL CONTROL OPTIONS.

–	None
AVI-LVFA	Avi-on wireless fixture control <sup>(9)</sup>
AVI-LVFA-CS2-PIR	Avi-on wireless fixture control with PIR motion and daylight sensor <sup>(10)</sup>
AWNRR	Lutron Athena wireless node integral fixture control, RF only <sup>(11)</sup>
AWNS	Lutron Athena wireless node integral fixture control, RF with daylight and occupancy sensing <sup>(12)</sup>

### DRIVER

See page 5 for ADDITIONAL DRIVER OPTIONS.

DIM	Driver with external 0-10V dimming wires
DRV	Driver without external dimming wires
DA	Driver with 12V auxiliary power, without external dimming wires <sup>(13)</sup>
DSR	Sensor-ready driver without external dimming wires (D4i DALI-2). <sup>(14)</sup>

### VOLTAGE

120	120V
277	277V
UNV	120-277V

## NOTES

- <sup>1</sup> Lumens based on 80 CRI/3500K CCT. Actual performance may vary +/-5%. Additional lumen packages available, see Options.
- <sup>2</sup> Quick-connect wiring harness, two end plates, field installed.
- <sup>3</sup> Quick-connect wiring harness, no end plates.
- <sup>4</sup> Two end plates installed.
- <sup>5</sup> Remote EM batteries: max remote distance 50'. Large remote box provided. Specify CEC in the option code when California Energy Commission regulations are required. See page 3 for REMOTE MOUNT BATTERY DETAILS.

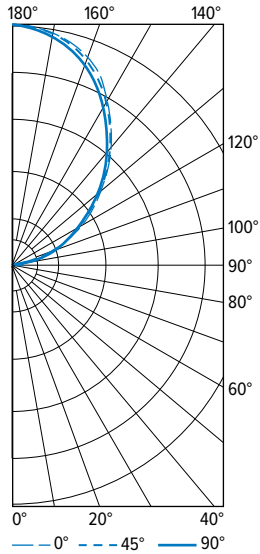
- <sup>6</sup> Sensor recommended for use in downlight orientation only. See page 3 for SENSOR & NODE PLACEMENT DETAILS. See page 4 for AVI-ON BLUETOOTH WIRELESS CONTROL DETAILS.
- <sup>7</sup> Uplight only; reduces lumen output up to 25%
- <sup>8</sup> Specify in increments of 100 nominal lumens. Option must be specified with next higher lumen package.
- <sup>9</sup> DA driver only.
- <sup>10</sup> DA driver only.
- <sup>11</sup> DA and DSR Drivers only.
- <sup>12</sup> DA and DSR Drivers only.
- <sup>13</sup> Avi-on and Lutron Athena Controls only.
- <sup>14</sup> Lutron Athena Controls only.



# AX2W<sup>LED</sup> 2" Wall Mount Architectural

## PHOTOMETRY

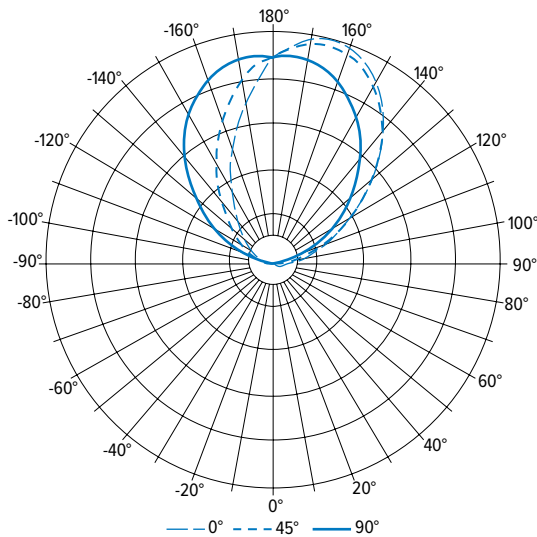
**AX2U-4-L33/835-S-DIM-UNV** Report #: 18753.0; 03/11/15 | Total Luminaire Output: 3248 lumens; 41.6 Watts | Efficacy: 78.2 lm/W | 84 CRI; 3483K CCT



VERTICAL ANGLE	HORIZONTAL ANGLE			ZONAL LUMENS
	0°	45°	90°	
0	0	0	0	
5	0	0	0	0
15	0	0	0	0
25	0	0	0	0
35	0	0	0	0
45	0	0	11	2
55	0	8	19	8
65	0	13	28	13
75	0	20	40	21
85	1	26	47	27
90	9	37	63	
95	40	68	97	75
105	168	179	205	195
115	331	328	334	332
125	523	513	492	463
135	725	706	686	553
145	927	918	887	576
155	1123	1104	1082	511
165	1237	1229	1208	348
175	1293	1294	1288	124
180	1304	1304	1304	

	ZONE	LUMENS	% FIXTURE
LUMEN SUMMARY	0 - 30	0	0
	0 - 40	0	0
	0 - 60	10	0
	0 - 90	71	2
	90 - 120	603	19
	90 - 150	2194	68
	90 - 180	3177	98
	0 - 180	3248	100

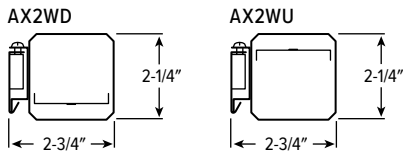
**AX2WU-4-L33/835-S-ASY-DIM-UNV** Report #: 18755.0; 03/11/15 | Total Luminaire Output: 2443 lumens; 42.2 Watts | Efficacy: 58.0 lm/W; 84.6 CRI; 3540K CCT



VERTICAL ANGLE	HORIZONTAL ANGLE						ZONAL LUMENS
	0°	45°	90°	135°	180°		
0	0	0	0	0	0		
5	0	0	0	0	0	0	
15	0	0	0	0	0	0	
25	0	0	0	0	0	0	
35	5	0	0	0	0	0	1
45	12	0	0	0	0	0	2
55	19	5	0	0	0	0	4
65	33	11	0	0	0	0	7
75	44	18	0	0	0	0	9
85	60	28	0	0	0	0	15
90	82	43	1	6	7		
95	121	76	28	28	25	60	
105	219	182	121	82	63	145	
115	360	345	263	149	105	248	
125	540	531	417	226	154	341	
135	743	739	581	328	221	413	
145	933	924	758	468	329	438	
155	1083	1050	890	640	491	393	
165	1137	1105	987	817	674	274	
175	1066	1059	1021	976	890	97	
180	1011	1011	1011	1011	1011		

	ZONE	LUMENS	% FIXTURE
LUMEN SUMMARY	0 - 30	0	0
	0 - 40	1	0
	0 - 60	6	0
	0 - 90	36	2
	90 - 120	453	19
	90 - 150	793	33
	90 - 180	1643	67
	0 - 180	2443	100

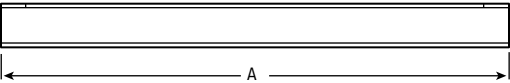
## CROSS SECTIONS



# AX2W<sup>LED</sup> 2" Wall Mount Architectural

## MOUNTING DETAILS

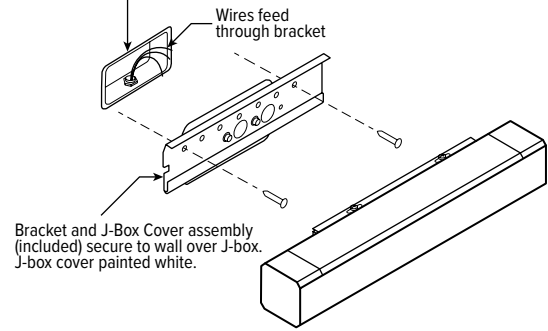
### SIDE VIEW



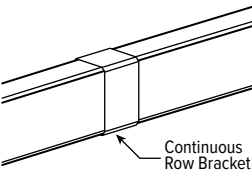
NOMINAL LENGTH	ACTUAL LENGTH (A)
2'	25-7/8"
4'	48-1/16"
8'	91-1/8"

### MOUNTING

J-Box (not provided) mounted **horizontally** (if attaching to existing vertical J-box, J-box cover will be partially visible below fixture).

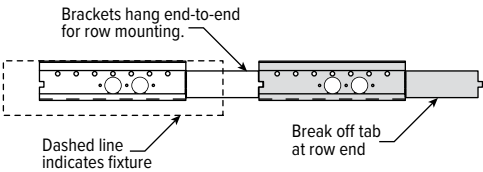


### CONTINUOUS ROW FIXTURES



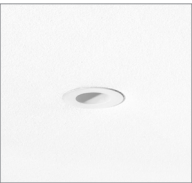
When row mounting fixtures, joint between fixtures will be visible at 4' or 8' intervals depending on fixture length.

### ROW MOUNTING



## REMOTE MOUNT BATTERY DETAILS

### EM/10WRM/RTS



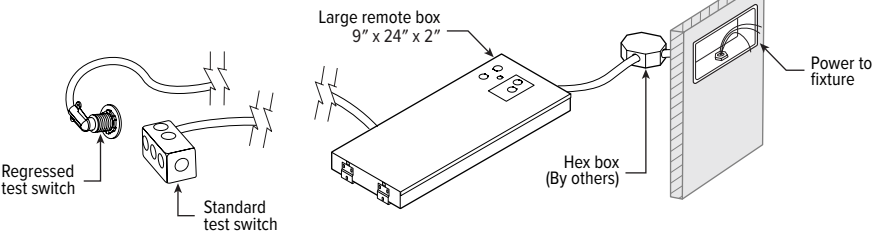
Regressed test switch  
ø1-3/4"

### EM/10WRM



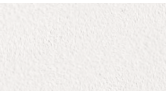
Standard test switch  
2-3/4" x 4-1/2"

Max remote distance is 50', connection by others.



## FINISH OPTIONS

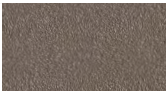
### WHITE



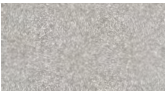
### BLACK



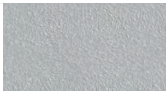
### BRONZE



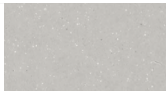
### NICKEL



### SILVER

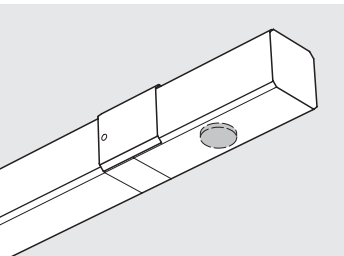


### ALUM



For custom color, please specify RAL code or a manufacturer code with description. All custom colors other than RAL require two sample swatches, minimum 1" square.

## SENSOR & NODE PLACEMENT DETAILS



# AX2W<sup>LED</sup> 2" Wall Mount Architectural

## AVI-ON BLUETOOTH WIRELESS CONTROL DETAILS

### FEATURES

#### Simple

- Gateway-free distributed control
- Contractor friendly installation
- Occupancy/vacancy/daylight sensing

#### Scalable

- Virtually unlimited network size
- Spans small offices to large warehouses
- Flexible control strategies

#### Secure

- Optional cloud connectivity
- UL IoT platinum security rating
- DLC 5.0 compliant

### COMMISSIONING & INSTALLATION TOOLS

Avi-on mobile apps provide intuitive, quick installation and commissioning. Pro tools are available to qualified installers. Live commissioning training and on-site or remote support by Avi-on must be ordered separately through Avi-on.



Commissioning Mobile App

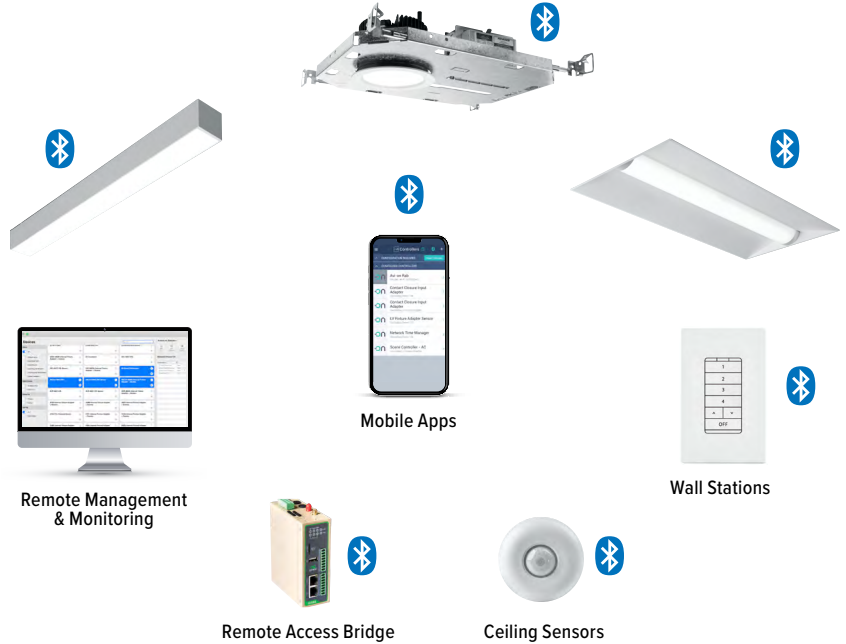


Zone Scanner Web App



Commissioning Pro App

### SYSTEM COMPONENTS



The Bluetooth® word mark and logos are registered trademarks owned by Bluetooth SIG, Inc. and any use of such marks by Avi-on is under license. Other trademarks and trade names are those of their respective owners.

### ACCESSORIES

WALL STATIONS	
AVI-B-2401AC-1	Scene controller - buttons numbered 1-4 and up/down/off, 120-277VAC
AVI-B-2402BAT-1	Scene controller - buttons numbered 1-4 and up/down/off, battery powered
AVI-B-2401AC-2	Dimmer with presets - buttons with percentages and up/down/off, 120-277VAC
AVI-B-2402BAT-2	Dimmer with presets - buttons with percentages and up/down/off, battery powered
AVI-B-2401AC-3	Two button control on/off or hold to dim up/down, 120-277VAC
AVI-B-2402BAT-3	Two button control on/off or hold to dim up/down, battery powered

NETWORK	
AVI-RAB-LTE	Remote access bridge
AVI-NTM	Network time manager with battery backup
CEILING MOUNT SENSORS	
AVI-KIT-SEN-DUCM	PIR motion and ultrasonic sensor kit
AVI-KIT-SEN-ICM	PIR motion and photocell sensor kit

For load controllers and additional accessory info, see [hew.com/avi-on](http://hew.com/avi-on)

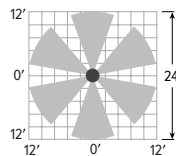
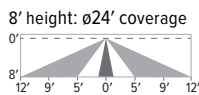
### AVI-LVFA-CS2-PIR Avi-on wireless fixture control with PIR motion and daylight sensor. DA Driver only.

SPECIFICATIONS	
TYPE	PIR Motion + Daylight
MOUNTING HEIGHT	8' – 10'
DETECTION ANGLE	360°
TEMPERATURE RANGE	-30° to 50°C
RELATIVE HUMIDITY	10 to 80% non-condensing
IP RATING	IP20
MANUFACTURER	Avi-On



### SENSOR COVERAGE PATTERNS

#### Side View



### SENSOR DETAIL




Dimensions: 13/16" x 2-1/4"



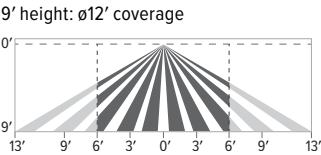
# AX2W<sup>LED</sup> 2" Wall Mount Architectural

## ADDITIONAL CONTROL OPTIONS

**AWNS** Lutron Athena wireless node integral fixture control, RF with daylight and occupancy sensing. DA and DSR Drivers only.

SPECIFICATIONS	
TYPE	Radio Frequency
MOUNTING HEIGHT	8' – 12'
DETECTION ANGLE	360°
TEMPERATURE RANGE	0° to 55°C
RELATIVE HUMIDITY	0 to 90%, non-condensing
COMMISSIONING	Clear Connect gateway – Type X with app (iOS or Android)
MANUFACTURER	Lutron
	

### SENSOR COVERAGE PATTERNS



### Motion Sensor Coverage

CEILING HEIGHT	COVERAGE AREA (SQ FT)
8'	114
9'	144
10'	178
12'	256

### SENSOR DETAIL



Dimensions: ø1-1/8"

## ATHENA CONTROL OPTIONS

CATALOG NUMBER	DESCRIPTION
AWNDR	Lutron Athena wireless node integral fixture control, RF only, for use with D4i DALI-2 or driver with 12V auxiliary power.
AWNS	Lutron Athena wireless node integral fixture control, RF with daylight and occupancy sensing, for use with D4i DALI-2 or driver with 12V auxiliary power.
AWNDR-BL	Lutron Athena wireless node integral fixture control, RF only, for use with D4i DALI-2 or driver with 12V auxiliary power, black finish.
AWNS-BL	Lutron Athena wireless node integral fixture control, RF with daylight and occupancy sensing, for use with D4i DALI-2 or driver with 12V auxiliary power, black finish.

## ADDITIONAL DRIVER OPTIONS

Note: Lumen restrictions apply, consult product builder at [hew.com/product-builder](http://hew.com/product-builder)

CATALOG NUMBER	DESCRIPTION
DRV	Driver without external dimming wires prewired for non-dimming applications
DIM	Driver with external dimming wires prewired for 0-10V low voltage applications
DIM1	1% driver with external dimming wires prewired for 0-10V low voltage applications
DIM LINE	Line voltage dimming driver (TRIAC and ELV compatible, 120V only)
DIM TRC	Line voltage dimming driver (TRIAC compatible, 120V only)
DA	Driver with 12V auxiliary power, without external dimming wires
DSR	Sensor-ready driver without external dimming wires (D4i DALI-2)
SD40	40% step-dimming driver
SD50	50% step-dimming driver
DALI	DALI dimming driver
LDE1	Lutron Hi-lume 1% EcoSystem dimming driver

