

CATALOG #: _____

TYPE: _____

PROJECT: _____

FEATURES



- Pick from two small-scale architectural styles, ClassicLine or CurviLine
- Control direct and indirect lighting independently using a pull chain or bedside controller
- Designed with the appearance of finely crafted carpentry
- Precision reflectors and diffusing elements produce comfortable ambient light along with a highly functional reading light
- Small scale design complements architecture with minimal impact on space
- The direct and indirect components are fully isolated and separately switchable using a pull chain, bedside controller, or wall switch
- Heavy-duty extruded aluminum housing ensures superior durability while providing crisp design detail
- Standard anti-microbial finish for healthcare applications
- Wireless in-fixture control solutions available
- Made Right Here® in the USA

ORDERING EXAMPLE: CB CL - 4 - L40/835U / L40/835D - AF125 - OPTIONS - CONTROL/DIM - UNV

ORDERING INFO

SERIES	STYLE	LENGTH	LUMEN PACKAGE (EXAMPLE: L40/835U/L40/835D)			
			LUMENS ^[1]	U OR D	CRI	CCT
CB	CL ClassicLine	4 4'	Specify lumen packages: U for Uplight and D for Downlight			
	CV CurviLine		L23 2,300lm	U Uplight	8 80	30 3000K
	L40 4,000lm		D Downlight	35 3500K	40 4000K	

SHIELDING

- AF12125** Inverted frosted acrylic, pattern 12, .125" thick
- AF125** Frosted acrylic, .125" thick

OPTIONS ^[2]

- GLR (L_)** Fuse, fast blow ^[3]
Additional lower lumen packages available. ^[4]
Example: 3,500 nominal lumens = CBCL-4-L23/835U/L40/835D-(L35D)

SPECIFY R FOR RIGHT AND L FOR LEFT ^[5]

- NL_** LED nightlight/chartlight
- NL_/WRS/120** LED nightlight/chartlight and white rocker
- PS_/120** Single-circuit pull switch, operates down light
- PS2_/120** Two-circuit, 4-position pull switch
- GCO_** Grounded convenience outlet

SPECIFICATIONS

- **HOUSING** – Seam-welded extruded aluminum.
- **REFLECTIVE SURFACES** – 92% minimum average reflective anti-microbial white polyester powder coat on interior components.
- **SHIELDING** – Frosted acrylic or inverted prismatic frosted acrylic.
- **FINISH** – Textured anti-microbial matte white polyester TGIC powder coat bonded to phosphate-free, multi-stage pretreated metal. All parts painted after fabrication to facilitate installation, increase efficiency, and inhibit corrosion.
- **ELECTRICAL** – High-quality mid-power LED boards. L70 >50,000 hours.
- **MOUNTING** – Wall mounts over 4" x 2" horizontal junction box.
- **LISTINGS** –
 - cCSAus certified as luminaire suitable for dry or damp locations.
 - Complies with the Buy American Act and other federal regulations. Request certification at hew.com/baa.
- **WARRANTY** – 5-year limited warranty, see hew.com/warranty.

CONTROL

- See page 3 for **ADDITIONAL CONTROL/ DRIVER OPTIONS**.
- None
- AVI-LVFA** Avi-on wireless fixture control ^[6]
- AWNRR** Lutron Athena wireless node integral fixture control, RF only ^[7]

DRIVER

- See page 3 for **ADDITIONAL CONTROL/ DRIVER OPTIONS**.
- DIM** Driver with external dimming wires
- DRV** Driver without external dimming wires
- DA** Driver with 12V auxiliary power, without external dimming wires ^[8]
- DSR** Sensor-ready driver without external dimming wires (D4i DALI-2) ^[9]

VOLTAGE

- 120** 120V
- 277** 277V
- UNV** 120-277V
- 347** 347V ^[10]

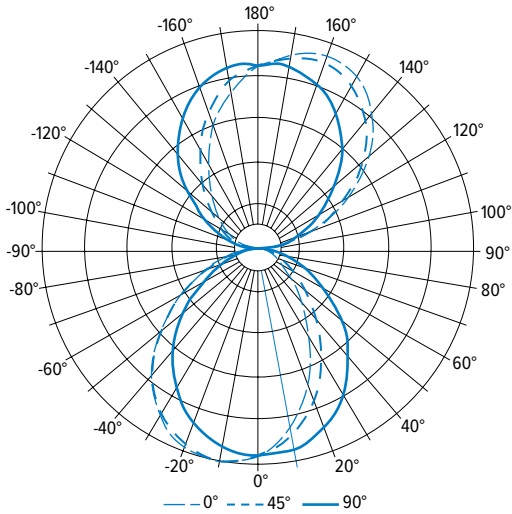
NOTES

- ¹ Lumen output based on 3500 CCT. Actual lumens may vary +/-5%. Additional lumen packages available, see options.
- ² See page 2 for FINISH OPTIONS. Custom colors available upon request. See page 2 for LOW-VOLTAGE CONTROLLER.
- ³ Specify voltage, one per driver.
- ⁴ Specify in increments of 100 nominal lumens. Option must be specified with next higher lumen package.
- ⁵ 120V only.
- ⁶ DA Driver only. See page 3 for AVI-ON BLUETOOTH WIRELESS CONTROL DETAILS.
- ⁷ DA and DSR Drivers only.
- ⁸ Avi-on and Lutron Athena Controls only.
- ⁹ Lutron Athena Controls only.
- ¹⁰ Not available with EM batteries, DA, or DSR drivers.



PHOTOMETRY

CBCL-4-L40/840U/L40/840D-AF125-DIM-UNV Report #: 19020.0; 08/06/15 | Total Luminaire Output: 8043 lumens; 102.4 Watts | Efficacy: 78.6 lm/W | 80 CRI; 4000K CCT

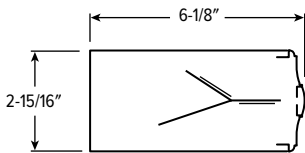


VERTICAL ANGLE	HORIZONTAL ANGLE					ZONAL LUMENS
	0°	45°	90°	135°	180°	
0	1726	1726	1726	1726	1726	
5	1627	1659	1721	1780	1777	164
15	1346	1463	1650	1790	1809	460
25	983	1165	1494	1713	1734	666
35	632	857	1269	1532	1548	748
45	374	569	993	1251	1265	702
55	207	351	700	919	931	574
65	92	178	437	592	620	391
75	24	51	207	333	354	208
85	7	7	43	121	141	65
95	17	53	88	78	64	67
105	305	328	256	186	153	242
115	657	661	463	327	273	454
125	1022	961	677	481	399	630
135	1321	1245	938	658	553	736
145	1565	1477	1176	867	754	743
155	1685	1604	1364	1110	978	629
165	1688	1633	1492	1329	1227	419
175	1573	1573	1551	1486	1431	146
180	1530	1530	1530	1530	1530	

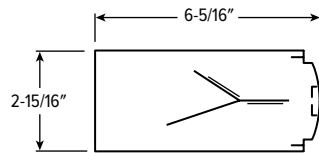
LUMEN SUMMARY	ZONE	LUMENS	% FIXTURE
	0 - 30	1291	16
	0 - 40	2039	25
	0 - 60	3315	41
	0 - 90	3979	50
	90 - 120	763	10
	90 - 150	2871	36
	90 - 180	4064	51
	0 - 180	8043	100

CROSS SECTIONS

CLASSICLINE (CL)

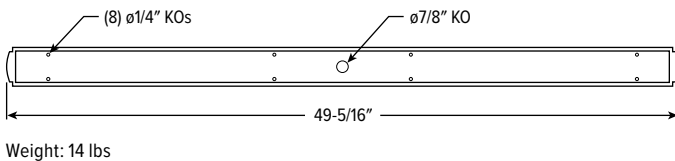


CURVILINE (CV)

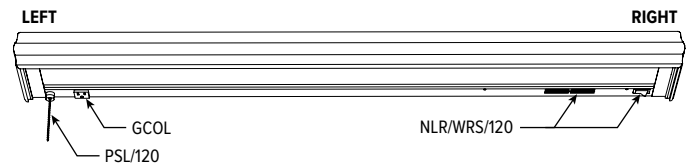


FIXTURE DETAILS

BACKVIEW



OPTIONS



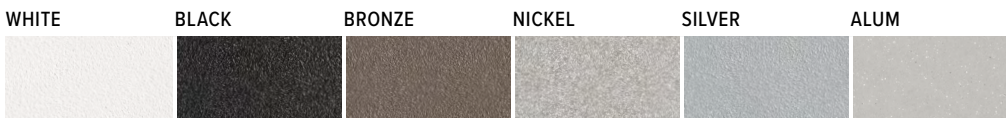
LOW-VOLTAGE CONTROLLER

EXAMPLE: LVC2U/D				
CONTROLLER	LOAD 1	LOAD 2	LOAD 3	
LVC1 1-circuit	U Up D Down N Nurse			
LVC2 2-circuit	U/ Up D/ Down	D/ Down N/ Nurse		
LVC3 Dimming control	DIMU/ Uplight, 0-10 dimming ¹ DIMD/ Downlight, 0-10 dimming ¹	U/ Up D/ Down N/ Nurse	N Nurse	
	DIMU/DIMD/ Uplight and downlight, 0-10 dimming ¹			

120V or 277V only

¹ Smooth dimming of the load utilizing a single, dry contact, momentary, normally open switch which will dim from 25% up to 100% while holding down the switch.

FINISH OPTIONS



For custom color, please specify RAL code or a manufacturer code with description. All custom colors other than RAL require two sample swatches, minimum 1" square.

AVI-ON BLUETOOTH WIRELESS CONTROL DETAILS

FEATURES

Simple

- Gateway-free distributed control
- Factory pre-commissioning
- Contractor friendly installation
- Occupancy/vacancy/daylight sensing

Scalable

- Virtually unlimited network size
- Spans small offices to large warehouses
- Flexible control strategies

Secure

- Optional cloud connectivity
- UL IoT platinum security rating
- DLC 5.0 compliant

COMMISSIONING & INSTALLATION TOOLS

Avi-on mobile apps provide intuitive, quick installation and commissioning. Pro tools are available to qualified installers. Live commissioning training and on-site or remote support by Avi-on must be ordered separately through Avi-on.



Commissioning
Mobile App

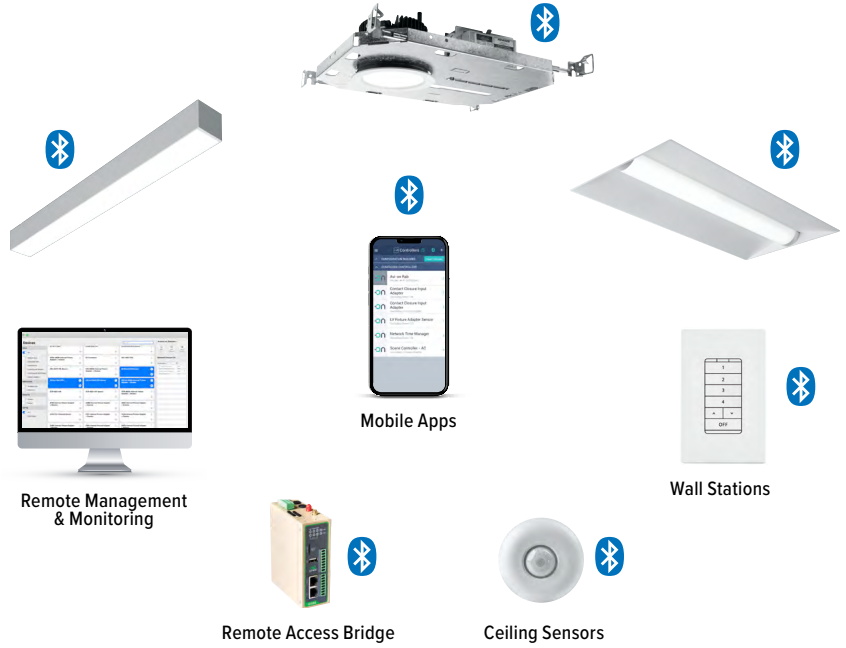


Zone Scanner
Web App



Commissioning
Pro App

SYSTEM COMPONENTS



The Bluetooth® word mark and logos are registered trademarks owned by Bluetooth SIG, Inc. and any use of such marks by Avi-on is under license. Other trademarks and trade names are those of their respective owners.

ACCESSORIES

WALL STATIONS	
AVI-2401AC	Scene controller - numbered 1-4, 120-277VAC
AVI-2402BAT	Scene controller - numbered 1-4, battery powered
AVI-2401AC-2	Dimmer with presets - percentages, 120-277VAC
AVI-2402BAT-2	Dimmer with presets - percentages, battery powered
AVI-2401AC-3	On/off/dimming, 120-277VAC
AVI-2402BAT-3	On/off/dimming, battery powered

NETWORK	
AVI-RAB-LTE	Remote access bridge – LTE connection
AVI-2001RAB-01-C	Remote access bridge – Wifi connection
AVI-KIT-NTM	Network time manager with battery backup

CEILING MOUNT SENSORS	
AVI-KIT-SEN-DUCM	PIR motion and ultrasonic sensor kit
AVI-KIT-SEN-ICM	PIR motion and photocell sensor kit

For load controllers and additional accessory info, see hew.com/avi-on

ADDITIONAL CONTROL/DRIVER OPTIONS

Note: Lumen restrictions apply, consult product builder at hew.com/product-builder.

CATALOG NUMBER	DESCRIPTION
AVI-LVFA/DA	Avi-on wireless fixture control for use with driver with 12V auxiliary power
AWNDR/DA	Lutron Athena wireless node integral fixture control, RF only, for use with driver with 12V auxiliary power
AWNDR/DSR	Lutron Athena wireless node integral fixture control, RF only, for use with sensor-ready driver (D4i DALI-2)
DRV	Driver prewired for non-dimming applications
DIM	Dimming driver prewired for 0-10V low voltage applications
DIM1	1% dimming driver prewired for 0-10V low voltage applications
DIM LINE	Line voltage dimming driver (TRIAC and ELV compatible, 120V only)
DIM TRC	Line voltage dimming driver (TRIAC compatible, 120V only)
SD40	40% step-dimming driver
SD50	50% step-dimming driver
DALI	DALI dimming driver
LDE1	Lutron Hi-lume 1% EcoSystem dimming LED driver

