

CATALOG #: \_\_\_\_\_

TYPE: \_\_\_\_\_

PROJECT: \_\_\_\_\_



## FEATURES

- Air return capability reduces number of unsightly ceiling vents for a cleaner appearance
- Provide soft, uniform illumination
- Choice of three diffusers to enhance the space
- Power and light levels can be custom set to meet energy and design needs
- Shallow housing depth
- Maximize energy savings with efficacies as high as 138 lm/W
- Wireless in-fixture control solutions available
- Made Right Here® in the USA

## SPECIFICATIONS

- HOUSING** – 20-gauge die-formed C.R.S.
- REFLECTOR** – Precision die-formed C.R.S. with highly reflective non-glare matte white polyester powder coated finish.
- SHIELDING** – Ribbed acrylic standard.
- FINISH** – Highly-reflective non-glare matte white polyester powder coat bonded to phosphate-free, multi-stage pretreated metal. All parts painted after fabrication to facilitate installation, increase efficiency, and inhibit corrosion.
- ELECTRICAL** – High-quality mid-power LED boards. Rated > 50,000 hours at 70% lumen maintenance (L70).
- MOUNTING** – NEMA Type “G” 15/16” or 1” grid standard. For NEMA Type “NFG” 9/16” grid installation, specify EQCLIPS option. NEMA Type “SS” 9/16” grid installation available (earthquake clips included).
- LISTINGS** –
  - cCSAus certified as luminaire suitable for dry or damp locations.
  - Complies with the Buy American Act and other federal regulations. Request certification at [hew.com/baa](http://hew.com/baa).
- WARRANTY** – 5-year limited warranty, see [hew.com/warranty](http://hew.com/warranty).

## ORDERING EXAMPLE: DI G - AR 2 4 - L98/835 - AD - OPTIONS - CONTROL/DIM - UNV

### ORDERING INFO

SERIES	CEILING TYPE	FIXTURE STYLE	WIDTH	LENGTH	LUMENS <sup>[1]</sup>	CRI	CCT
DI	G 15/16” or 1” grid	AR Air return only <sup>[2]</sup>	1 1' <sup>[3]</sup>	2 2'	<b>1x4</b>	8 80	27 2700K
				4 4'	<b>L28</b> 2,800lm	9 90	30 3000K
			2 2'		<b>L47</b> 4,700lm		35 3500K
					<b>L60</b> 6,000lm		40 4000K
					<b>2x2</b>		50 5000K
					<b>L24</b> 2,400lm		
					<b>L32</b> 3,200lm		
					<b>L48</b> 4,800lm		
					<b>2x4</b>		
					<b>L50</b> 5,000lm		
					<b>L64</b> 6,400lm		
					<b>L88</b> 8,800lm		
					<b>L98</b> 9,800lm		

### SHIELDING <sup>[4]</sup>

<b>AD</b>	Ribbed acrylic
<b>WPR</b>	White perforated round
<b>WPR/ACRY/CTR/CLR</b>	White perforated round with center clear acrylic <sup>[6]</sup>

### OPTIONS <sup>[5]</sup>

<b>EM/10W</b>	10-watt emergency driver
<b>EQCLIPS</b>	Earthquake clips <sup>[7]</sup>
<b>(L__)</b>	Additional lower lumen packages available. <sup>[8]</sup>
	Example: 7,000 nominal lumens = DIG-AR24-L88/850-(L70).

### OPTIONS <sup>[9]</sup>

<b>EM/10W</b>	10-watt emergency driver
<b>EQCLIPS</b>	Earthquake clips <sup>[10]</sup>
<b>(L__)</b>	Additional lower lumen packages available. <sup>[11]</sup>
	Example: 7,000 nominal lumens = DIG-AR24-L88/850-(L70).

### CONTROL

	See page 4 for <b>ADDITIONAL CONTROL/DRIVER OPTIONS</b> .
–	None
<b>AVI-LVFA</b>	Avi-on wireless fixture control <sup>[12]</sup>
<b>AWNDR</b>	Lutron Athena wireless node integral fixture control, RF only <sup>[13]</sup>

### DRIVER

See page 4 for **ADDITIONAL CONTROL/DRIVER OPTIONS**.

<b>DIM</b>	Driver with external dimming wires
<b>DRV</b>	Driver without external dimming wires
<b>DA</b>	Driver with 12V auxiliary power, without external dimming wires <sup>[14]</sup>
<b>DSR</b>	Sensor-ready driver without external dimming wires (D4i DALI-2) <sup>[15]</sup>

### VOLTAGE

<b>120</b>	120V
<b>277</b>	277V
<b>UNV</b>	120-277V
<b>347</b>	347V <sup>[16]</sup>

## NOTES

- Lumen output based on AD shielding, 80CRI/3500K CCT. Actual performance may vary +/-5%, see page 2 for **FIXTURE PERFORMANCE DATA**. Additional lumen packages available, see options.
- Through side slots.
- Available with 4' length only.
- See page 3 for **SHIELDING DETAILS**.
- See page 3 for **FLEXIBLE WHIP OPTIONS**.
- 2x2 and 2x4 only. Consult factory for additional colors.
- 4 per fixture.
- Specify in increments of 100 nominal lumens. Option must be specified with next higher lumen package.

- See page 3 for **FLEXIBLE WHIP OPTIONS**.
- 4 per fixture. Optional for 1” grid installations. Required for 9/16” grid mounting.
- Specify in increments of 100 nominal lumens. Option must be specified with next higher lumen package.
- DA Driver only. See page 3 for **AVI-ON BLUETOOTH WIRELESS CONTROL DETAILS**.
- DA and DSR Drivers only.
- Avi-on and Lutron Athena Controls only.
- Lutron Athena Controls only.
- Not available with EM batteries, DA, or DSR drivers.



## FIXTURE PERFORMANCE DATA

	LED PACKAGE	DELIVERED LUMENS	WATTAGE	EFFICACY (lm/W)
1x4	L28	2810	21.4	131
	L47	4844	35.2	138
	L60	6009	46.3	130
2x2	L24	2472	19.6	126
	L32	3286	25.8	127
	L48	4862	38.1	128
2x4	L50	5060	37.4	135
	L64	6317	45.7	138
	L88	8857	66.3	134
	L98	9869	74.8	132

- Photometrics tested in accordance with IESNA LM-79. Results based on AD shielding, 80 CRI/3500K CCT, average wattage for 120V through 277V input, and 25°C ambient temperature. Actual performance may vary +/-5%.
- To calculate lumen output in emergency mode, multiply the battery wattage by the efficacy.
- Use multiplier tables to calculate additional options.

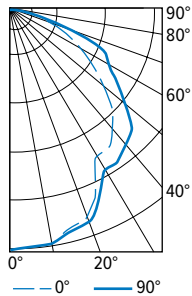
## MULTIPLIER TABLES

	COLOR TEMPERATURE	
	CCT	CONVERSION FACTOR
80 CRI	2700K	0.97
	3000K	0.99
	3500K	1.00
	4000K	1.03
	5000K	1.06
90 CRI	2700K	0.80
	3000K	0.82
	3500K	0.83
	4000K	0.86
	5000K	0.89

SHIELDING		
LENS	1x4	2x2   2x4
AD	1.00	1.00
WPR	0.78	0.78
WPR/ACRY	—	0.76

## PHOTOMETRY

DIG-AR24-L98/835-AD Total Luminaire Output: 9869 lumens; 74.8 Watts | Efficacy: 131.9 lm/W | 80 CRI; 3500K CCT



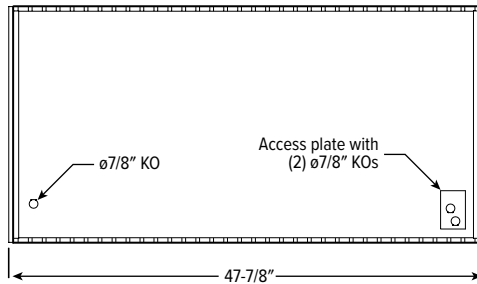
VERTICAL ANGLE	HORIZONTAL ANGLE			ZONAL LUMENS
	0°	45°	90°	
0	3587	3587	3587	
5	3545	3544	3546	338
15	3373	3397	3417	966
25	2975	3043	3097	1406
35	2531	2670	2771	1659
45	2156	2386	2530	1789
55	1519	1778	1939	1574
65	1009	1309	1567	1257
75	506	687	618	689
85	143	158	173	189
90	0	0	0	

LUMEN SUMMARY	ZONE	LUMENS	% FIXTURE
	0 - 30	2710	28
	0 - 40	4369	44
	0 - 60	7733	78
	0 - 90	9869	100
	0 - 180	9869	100

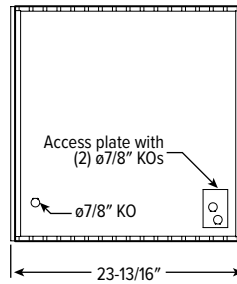
## FIXTURE DETAILS

### BACKVIEW

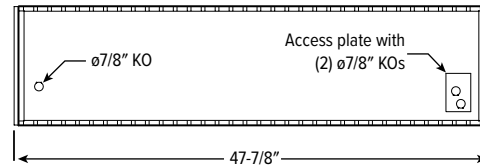
2x4



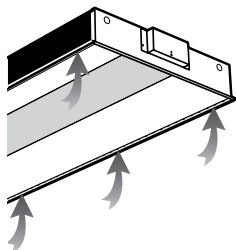
2x2



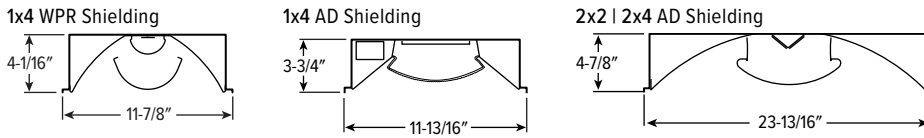
1x4



### AIR RETURN



## CROSS SECTIONS



## SHIELDING DETAILS



## FLEXIBLE WHIP OPTIONS

All Williams recessed troffers are available with a flexible metallic wiring harness, factory-attached and hard-wired to the luminaire.

Straight connectors are a snap-in type. Consult factory for wiring harness utilizing connectors secured by lock nuts, optional flex size, lengths, and other wire sizes or circuitry. Three-wire flex utilizes black, white, and green wire. Four-wire flex utilizes black, white, red, and green wire. Adding an emergency option requires an additional wire.

Williams fixtures are UL listed to provide factory-installation of several manufacturers' modular wiring devices, consult factory for availability and ordering information.

DESIGNATION	DESCRIPTION	DRIVER
F338	6' of 3/8" flex, (3) No. 18 AWG wires with (2) straight connectors	DRV, LTE LINE
F348	6' of 3/8" flex, (4) No. 18 AWG wires with (2) straight connectors	DRV + EM, SD40
F334	6' of 3/8" flex, (3) No. 14 AWG wires with (2) straight connectors	DRV, LTE LINE
F344	6' of 3/8" flex, (4) No. 14 AWG wires with (2) straight connectors	SD40
F358	6' of 3/8" flex, (5) No. 18 AWG wires with (2) straight connectors	DIM, DALI
F368Y	6' of 3/8" flex, (6) No. 18 AWG wires with (2) straight connectors	DIM, DIM + EM, DALI

## AVI-ON BLUETOOTH WIRELESS CONTROL DETAILS

### FEATURES

#### Simple

- Gateway-free distributed control
- Factory pre-commissioning
- Contractor friendly installation
- Occupancy/vacancy/daylight sensing

#### Scalable

- Virtually unlimited network size
- Spans small offices to large warehouses
- Flexible control strategies

#### Secure

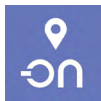
- Optional cloud connectivity
- UL IoT platinum security rating
- DLC 5.0 compliant

### COMMISSIONING & INSTALLATION TOOLS

Avi-on mobile apps provide intuitive, quick installation and commissioning. Pro tools are available to qualified installers. Live commissioning training and on-site or remote support by Avi-on must be ordered separately through Avi-on.



Commissioning Mobile App

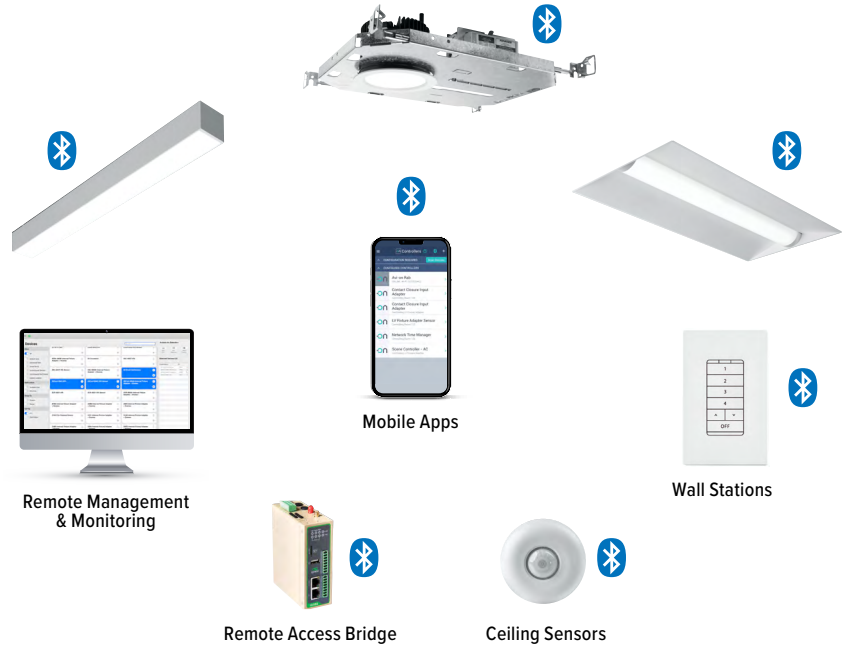


Zone Scanner Web App



Commissioning Pro App

### SYSTEM COMPONENTS



The Bluetooth® word mark and logos are registered trademarks owned by Bluetooth SIG, Inc. and any use of such marks by Avi-on is under license. Other trademarks and trade names are those of their respective owners.

## ACCESSORIES

WALL STATIONS	
AVI-2401AC	Scene controller - numbered 1-4, 120-277VAC
AVI-2402BAT	Scene controller - numbered 1-4, battery powered
AVI-2401AC-2	Dimmer with presets - percentages, 120-277VAC
AVI-2402BAT-2	Dimmer with presets - percentages, battery powered
AVI-2401AC-3	On/off/dimming, 120-277VAC
AVI-2402BAT-3	On/off/dimming, battery powered

NETWORK	
AVI-RAB-LTE	Remote access bridge
AVI-KIT-NTM	Network time manager with battery backup
CEILING MOUNT SENSORS	
AVI-KIT-SEN-DUCM	PIR motion and ultrasonic sensor kit
AVI-KIT-SEN-ICM	PIR motion and photocell sensor kit

For load controllers and additional accessory info, see [hew.com/avi-on](http://hew.com/avi-on)



#### ADDITIONAL CONTROL/DRIVER OPTIONS

Note: Lumen restrictions apply, consult product builder at [hew.com/product-builder](http://hew.com/product-builder).

CATALOG NUMBER	DESCRIPTION
AVI-LVFA/DA	Avi-on wireless fixture control for use with driver with 12V auxiliary power
AWNRR/DA	Lutron Athena wireless node integral fixture control, RF only, for use with driver with 12V auxiliary power
AWNRR/DSR	Lutron Athena wireless node integral fixture control, RF only, for use with sensor-ready driver (D4i DALI-2)
DRV	Driver prewired for non-dimming applications
DIM	Dimming driver prewired for 0-10V low voltage applications
DIM1	1% dimming driver prewired for 0-10V low voltage applications
DIM LINE	Line voltage dimming driver (TRIAC and ELV compatible, 120V only)
DIM TRC	Line voltage dimming driver (TRIAC compatible, 120V only)
SD40	40% step-dimming driver
SD50	50% step-dimming driver
DALI	DALI dimming driver
LDE1	Lutron Hi-lume 1% EcoSystem dimming driver

