

CATALOG #: _____

TYPE: _____

PROJECT: _____



FEATURES

- Easily change the color temperature and lumen output on-site with built-in switches, providing ultimate flexibility
- End plate converts to row aligner for continuous row
- Small fixture profile allows inconspicuous placement in coves or confined spaces
- Diffuse acrylic lens enhances uniformity and minimizes glare
- Variety of mounting accessories for surface and suspended applications
- High-performance up to 153 lm/W
- Made Right Here[®] in the USA

SPECIFICATIONS

- **HOUSING** – 22-gauge die-formed C.R.S.
- **SHIELDING** – Diffuse acrylic.
- **FINISH** – 92% minimum average reflective white polyester powder coat bonded to phosphate-free, multi-stage pretreated metal. All parts painted after fabrication to facilitate installation, increase efficiency, and inhibit corrosion.
- **ELECTRICAL** – High-quality mid-power LED boards. L70 >70,000 hours. 35°C maximum ambient operating temperature.
- **MOUNTING** – Surface (ceiling or wall) or suspended (hanging hardware required).
- **LISTINGS** –
 - cETLus conforms to UL STD 1598. Certified to CAN/CSA STD C22.2 No. 250.0. Suitable for dry locations.
 - Complies with the Buy American Act and other federal regulations. Request certification at hew.com/baa.
- **WARRANTY** – 5-year limited warranty, see hew.com/warranty.

ORDERING EXAMPLE: FS - 4 - LS/8CS - OPTIONS - DIM - UNV

ORDERING INFO

SERIES	LENGTH ^[1]	LUMENS ^[2]	CRI	CCT
FS	4 4' 8 8' ^[3]	LS Selectable lumens 4': 4,100/5,700/6,700 8': 8,200/11,500/13,400	8 80	CS Selectable CCT 3,500K/4,000K/5,000K
OPTIONS			DRIVER	VOLTAGE
EM/10WLP	Low-profile 10-watt emergency battery		DIM Dim-to-off driver ^[5]	UNV 120-277V
EM/10WKIT	10-watt emergency battery kit, CEC compliant ^[4]			
315	1-1/2" ceiling spacer			
VBY	(2) Y-hangers			
VBY-2	(2) Y-hangers with 2' chains			

NOTES

- ¹ For actual length, see page 3 for FIXTURE DETAILS.
- ² Lumen output based on 80 CRI/3500K CCT. Actual lumens may vary +/-5%, see page 2 for FIXTURE PERFORMANCE DATA.
- ³ Ships with (2) 4' lenses.
- ⁴ Ships separately, field installed.
- ⁵ Prewired for 0-10V low-voltage applications. Dimming down to 5%, dim-to-off below 0.5V



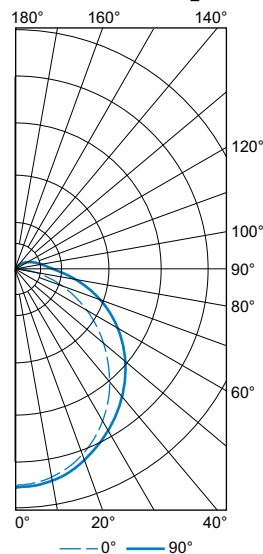
FIXTURE PERFORMANCE DATA

	WATTAGE SETTING	3500K			4000K			5000K		
		LUMEN OUTPUT	WATTAGE	EFFICACY (LM/W)	LUMEN OUTPUT	WATTAGE	EFFICACY (LM/W)	LUMEN OUTPUT	WATTAGE	EFFICACY (LM/W)
4'	Low	4106	27.7	148	4234	27.7	153	4223	27.6	153
	Medium	5734	39.4	146	6020	39.4	153	5891	39.4	150
	High	6711	47.7	141	7139	47.7	150	6893	47.7	145
8'	Low	8212	55.4	148	8468	55.4	153	8446	55.4	152
	Medium	11468	78.8	146	12040	78.8	153	11782	78.8	150
	High	13422	95.4	141	14278	95.4	150	13786	95.4	145

- Photometrics tested in accordance with IESNA LM-79. Results based on 80 CRI/3500K CCT, average wattage for 120V input, and 25°C ambient temperature. Actual performance may vary +/-5%.
- To calculate lumen output in emergency mode, multiply the battery wattage by the efficacy.

PHOTOMETRY

FS-4-LS/8CS-DIM-UNV_LOW Total Luminaire Output: 4106 lumens; 27.7 Watts | Efficacy: 148 lm/W | 80 CRI; 3500K CCT



VERTICAL ANGLE	HORIZONTAL ANGLE			ZONAL LUMENS
	0°	45°	90°	
0	1292	1292	1292	
5	1266	1283	1284	91
15	1201	1226	1233	198
25	1081	1112	1136	275
35	919	966	1015	313
45	729	809	885	313
55	541	648	741	281
65	354	481	585	222
75	182	320	420	148
85	46	183	269	81
90	1	135	212	
95	1	110	176	51
105	1	79	130	35
115	1	55	95	23
125	1	35	66	13
135	1	19	42	6
145	1	7	22	2
155	2	3	6	1
165	2	2	2	0
175	3	2	2	0
180	3	3	3	

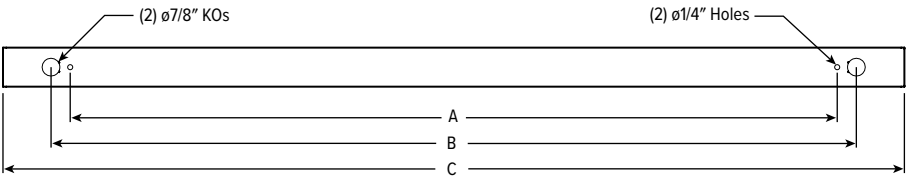
LUMEN SUMMARY	ZONE	LUMENS	% FIXTURE
	0 - 30	983	31
	0 - 40	1594	39
	0 - 60	2807	68
	0 - 90	3810	93
	90 - 180	296	7
	0 - 180	4106	100

SEE NEXT PAGE FOR FIXTURE DETAILS



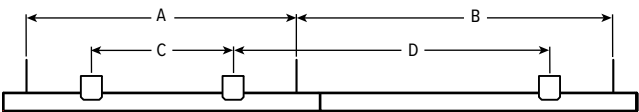
FIXTURE DETAILS

BACKVIEW



	SURFACE MOUNT (A)	7/8" KOs (B)	ACTUAL FIXTURE LENGTH (C)
4'	38"	40"	44-11/16"
8'	82-1/2"	84-1/2"	89-1/4"

STAND ALONE

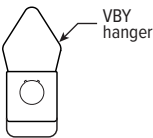


SUBSEQUENT

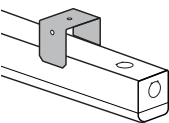
MOUNTING LENGTH

	VBY HANGER		315 SPACER	
	A	B	C	D
4'	38-1/8"	44-5/8"	36"	44-5/8"
8'	82-3/4"	89-3/16"	80"	89-3/16"

VBY



315



FIELDSELECT SWITCHES

