

CATALOG #: _____

TYPE: _____

PROJECT: _____

FEATURES

- High performance aisle light in a classic strip style
- Innovative optics provide even illumination from floor to ceiling
- Maximize energy savings with efficacies as high as 127 lm/W
- Mounting options include stem, chain, or surface
- Quick connect wiring option for continuous row mounting
- Extended inner row aligner insures straight rows with single hanging point at each intersection, when specified with C2 option
- Made Right Here® in the USA

SPECIFICATIONS

- HOUSING** – 22-gauge die-formed C.R.S.
- FINISH** – 92% minimum average reflective white polyester powder coat bonded to phosphate-free, multi-stage pretreated metal. All parts painted after fabrication to facilitate installation, increase efficiency, and inhibit corrosion.
- ELECTRICAL** – High quality mid-power LED boards. L70 at 50,000 hours. 40°C maximum ambient operating temperature.
- MOUNTING** – Stem, chain, or surface with extended fixture to fixture row aligner.
- LISTINGS** –
 - cCSAus certified as luminaire suitable for dry or damp locations.
 - DesignLights Consortium qualified product. Not all versions of this product may be DLC qualified, see the DLC Qualified Products List at www.designlights.org/QPL
- WARRANTY** – 5-year limited warranty, see hew.com/warranty.

ORDERING EXAMPLE: GA - 8 - L70/840 - N - OPTIONS - DRV - UNV

ORDERING INFO

SERIES	LENGTH	LUMENS ^[1]	CRI	CCT	DISTRIBUTION
GA	4 4'	4'	8 80	27 2700K	N Narrow
	8 8'	L35 3,500lm		30 3000K	
		L55 5,500lm		35 3500K	
		8'		40 4000K	
	L70 7,000lm	50 5000K			
	L110 11,000lm				

OPTIONS ^[2]

- EM/10W** 10-watt emergency LED battery
- (L__)** Additional lower lumen packages available. ^[5]
Example: 9,000 nominal lumens = GA-8-L110/840-(L90)
- SS-12** Single stem and canopy, 12"
- SWS-12** Swivel stem and canopy, 12"
- 320** 1-1/2" ceiling spacer
- GAT** GAT fastener (T-bar clip)
- VBY** (2) Y-hangers
- VBY-2** (2) Y-hangers and (2) 2' chains
- C2_** Two-circuit quick-connect wiring harness. ^[6]

CONTROL ^[3]

- DIM** Dimming driver
- DRV** Non-dimming driver

VOLTAGE ^[4]

- 120** 120V
- 208** 208V
- 240** 240V
- 277** 277V
- UNV** 120-277V
- 347** 347V ^[9]
- 480** 480V with stepdown transformer ^[10]

OCCUPANCY SENSOR

- OCCWS FSP-211-L2-120/277** Digital high/low passive infrared with L2 lens, end mount, 120V or 277V ^[7]
- FSIR-100** Remote controller for occupancy sensor ^[8]

NOTES

- Lumen output based on 4000 CCT. Actual lumens may vary +/-5%, see page 2 for FIXTURE PERFORMANCE DATA. Additional lumen package available, see options
- See page 3 for MOUNTING OPTIONS DETAILS. See [Technical Info](#) for occupancy sensor options. See page 3 for FINISH OPTIONS.
- See page 2 for ADDITIONAL CONTROL OPTIONS.
- Must specify voltage (not UNV) if using cord and plug or occupancy sensor.
- Specify in increments of 100 nominal lumens. Option must be specified with next higher lumen package.
- Extended inner row aligner provided with C2 option. See page 3 for FIXTURE DETAILS. See page 3 for QUICK CONNECT OPTIONS.
- Optional FSIR-100 remote controller available, ordered separately, see Options. See page 3 for OCCUPANCY SENSOR DETAILS.
- Please specify quantity required per project, ships separately.
- Not available with EM drivers.
- Not available with EM drivers.



FIXTURE PERFORMANCE DATA

	LED PACKAGE	DELIVERED LUMENS	WATTAGE	EFFICACY (lm/W)
4'	L35	3941	28	127
	L55	5640	47	119
8'	L70	6982	55	127
	L110	11280	95	119

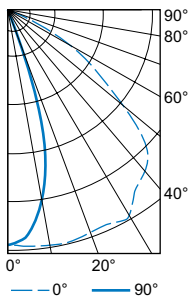
- Photometrics tested in accordance with IESNA LM-79. Results shown are based on 25°C ambient temperature.
- Wattage shown is average for 120V through 277V input.
- Results based on 4000K, 80 CRI, actual lumens may vary +/-5%
- Use multiplier table to calculate additional options.

MULTIPLIER TABLES

		COLOR TEMPERATURE	
		CCT	CONVERSION FACTOR
80 CRI	2700K		0.94
	3000K		0.96
	3500K		0.97
	4000K		1.00
	5000K		1.03
90 CRI	2700K		0.77
	3000K		0.79
	3500K		0.80
	4000K		0.83
	5000K		0.86

PHOTOMETRY

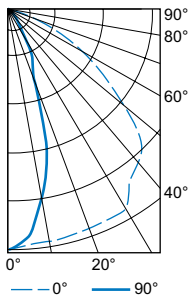
GA-8-L70/840 Report #: 19576.0; 10/26/16 | Total Luminaire Output: 6982 lumens; 55 Watts | Efficacy: 126.9 lm/W | 84.9 CRI; 4050K CCT



CANDLEPOWER DISTRIBUTION	VERTICAL ANGLE	HORIZONTAL ANGLE			ZONAL LUMENS
		0°	45°	90°	
	0	6971	6971	6971	
	5	7029	6886	6756	657
	15	7128	5512	4412	1597
	25	7016	2393	1167	1488
	35	6621	826	480	1160
	45	5876	404	278	908
	55	3438	193	153	587
	65	1508	108	108	292
	75	444	94	117	160
	85	54	90	126	107
	90	4	54	85	

LUMEN SUMMARY	ZONE	LUMENS	% FIXTURE
	0 - 30	3743	54
	0 - 40	4903	70
	0 - 60	6398	92
	0 - 90	6956	100
	0 - 180	6982	100

GA-8-L110/840 Report #: 19575.0; 10/26/16 | Total Luminaire Output: 11280 lumens; 94.5 Watts | Efficacy: 119.3 lm/W | 84.8 CRI; 4066K CCT



CANDLEPOWER DISTRIBUTION	VERTICAL ANGLE	HORIZONTAL ANGLE			ZONAL LUMENS
		0°	45°	90°	
	0	11294	11294	11294	
	5	11099	10895	10696	1040
	15	10999	8608	6858	2490
	25	10900	4306	2426	2502
	35	9830	1490	866	1867
	45	8695	715	490	1444
	55	5212	342	273	936
	65	2456	186	191	487
	75	745	165	208	272
	85	104	165	221	190
	90	9	108	160	

LUMEN SUMMARY	ZONE	LUMENS	% FIXTURE
	0 - 30	6031	54
	0 - 40	7898	70
	0 - 60	10278	91
	0 - 90	11228	100
	0 - 180	11280	100

ADDITIONAL CONTROL OPTIONS

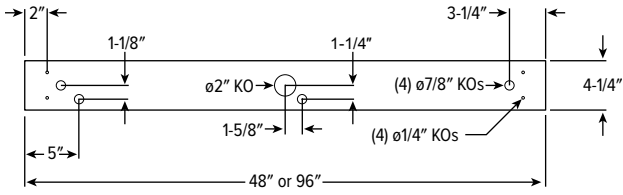
Note: Lumen restrictions apply, consult product builder at hew.com/product-builder.

CATALOG NUMBER	DESCRIPTION
DRV	Driver prewired for non-dimming applications
DIM	Dimming driver prewired for 0-10V low voltage applications
DIM1	1% dimming driver prewired for 0-10V low voltage applications
DIM LINE	Line voltage dimming driver (TRIAC and ELV compatible, 120V only)
DIM TRC	Line voltage dimming driver (TRIAC compatible, 120V or 277V only)
SD40	40% step-dimming driver
SD50	50% step-dimming driver
DALI	DALI dimming driver
LTE LINE	Lutron Hi-lume 1% 2-wire dimming driver forward phase line voltage controls (120V only)
LDE1	Lutron Hi-lume 1% EcoSystem dimming LED driver
LDE5	Lutron 5-Series 5% EcoSystem dimming LED driver
ELDO SOLOB	EldoLED Solodrive, 0.1% dimming driver for 0-10V controls
ELDO SOLOB DALI	EldoLED Solodrive, 0.1% dimming driver for DALI controls
ELDO ECO1	EldoLED Ecodrive, 1% dimming driver for 0-10V controls
ELDO ECO1 DALI	EldoLED Ecodrive, 1% dimming driver for DALI controls

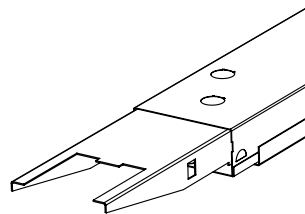


FIXTURE DETAILS

BACKVIEW



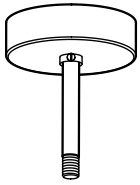
ROW ALLIGNER



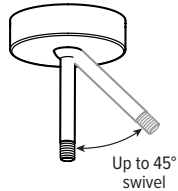
Provided when specified with C2 option.

MOUNTING OPTIONS DETAILS

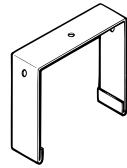
SS - 12



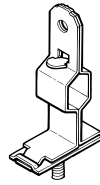
SWS - 12



320



GAT



VBY OR VBY - 2



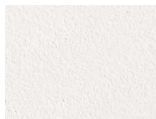
QUICK CONNECT OPTIONS

Note: Quick connect wiring required for row mounting. Length restrictions may apply, consult product builder at hew.com/product-builder.

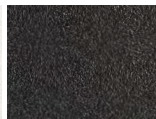
DESIGNATION	NUMBER OF WIRES (EXCLUDING GROUND)	WIRE COLORS	WIRE COLOR/POWER SUPPLY FACTORY CONNECTIONS	TYPICAL USE
C2B	3	White, Black, Red	White, Black	Alternating Circuits
C2BR	3	White, Black, Red	White, Black, Red	ON/OFF Switching (DRV) or Line Voltage dimming (DIM LINE) when equipped w/EM Power Supply (EM/10W)
C2R	3	White, Black, Red	White, Red	Alternating Circuits
C2BW/R	5	White, Black, Red, Gray, Green	White, Black/Red, Gray	0-10V 4-wire Low Voltage Dimming (DIM)

FINISH OPTIONS

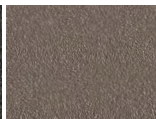
WHITE



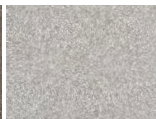
BLACK



BRONZE



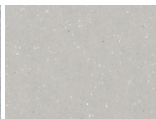
NICKEL



SILVER



ALUMINUM



For custom color, please specify RAL code or a manufacturer code with description. All custom colors other than RAL require two sample swatches, minimum 1" square.

OCCUPANCY SENSOR DETAILS

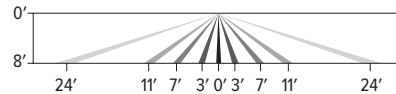
ORDERING EXAMPLE: OCCWS FSP-211-L2-120/277

FEATURES

- Fully adjustable high and low dimmed light levels.
- Designed for LED fixtures; rated for up to 200,000 on/off cycles.
- Hold-off setpoint with automatic calibration option for convenience and added energy savings.
- Adjustable via handheld wireless configuration tool.
- Adjustable time delay and cutoff delay.
- Factory set to 10% dimming at 5 minutes, cutoff at 1 hour.

LENS COVERAGE PATTERNS

L2 Coverage at 8' mounting height: ø48'



REMOTE CONTROLLER



FSIR-100 Remote controller for occupancy sensor

Initial setup and subsequent sensor adjustments are made using a handheld configuration tool (FSIR-100). The wireless tool stores up to five sensor parameter profiles to speed configuration of multiple sensors. Please specify quantity required per project.

Visit www.wattstopper.com for more information.

